



2100 South Clearwater Drive
Des Plaines, IL 60018
Phone: 800-566-2100
Fax: 847-803-5454
www.geberitnorthamerica.com

REPAIR PARTS

FITTING NO.

131-CABNF

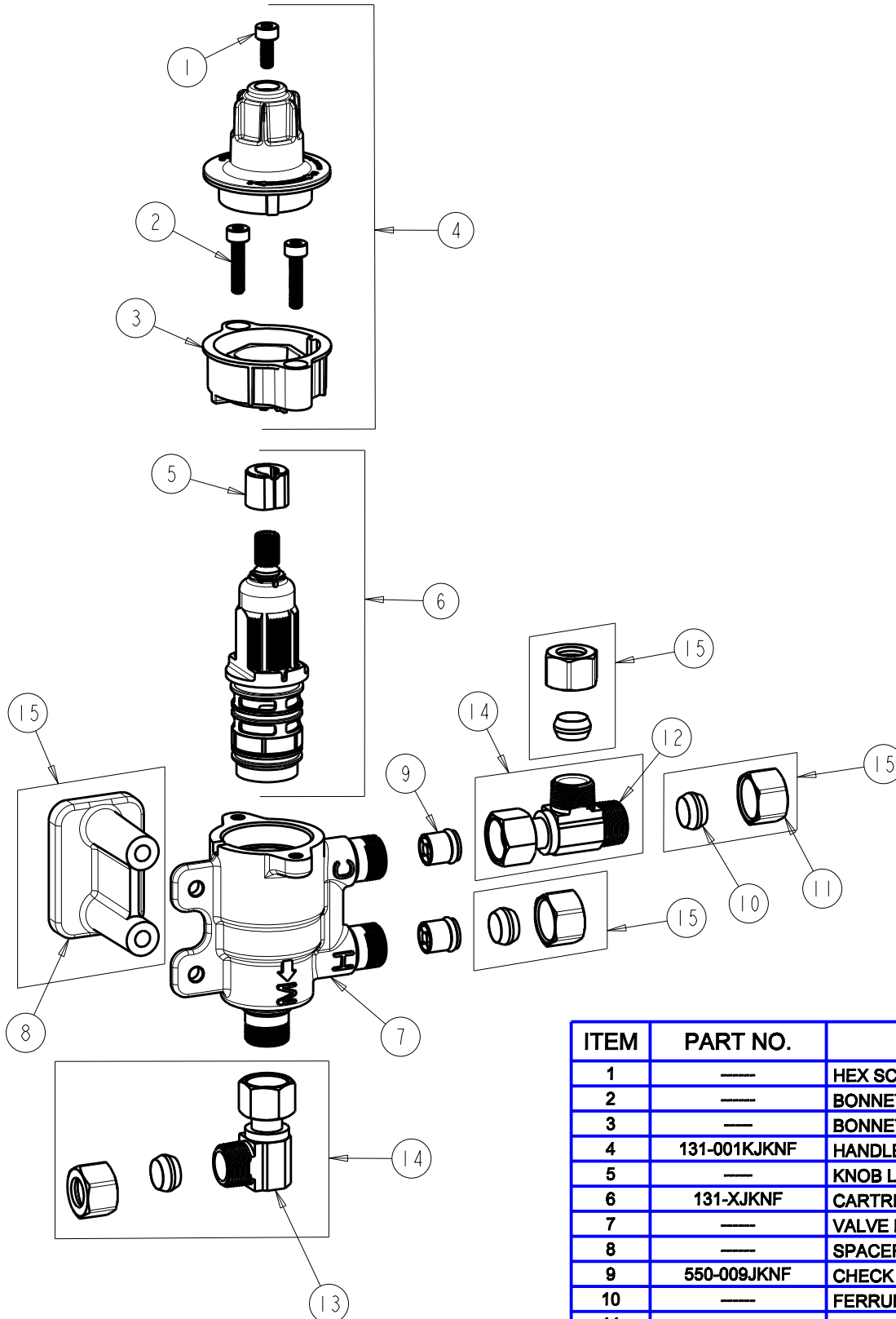
SUBMITTED MODEL NO.

BY: SID DATE: 03-11-11

CHK: REV:

ITEM NO.

FOR TECHNICAL ASSISTANCE
1-800-TEC-TRUE (1-800-832-8783)



| ITEM | PART NO. | DESCRIPTION |
|------|--------------|--------------------------------|
| 1 | --- | HEX SCREW, M4x0.7x10mm |
| 2 | --- | BONNET HEX SCREW, M4x0.7x18mm |
| 3 | --- | BONNET |
| 4 | 131-001KJKNF | HANDLE KIT |
| 5 | --- | KNOB LOCATOR |
| 6 | 131-XJKNF | CARTRIDGE KIT |
| 7 | --- | VALVE BODY NOT SOLD SEPARATELY |
| 8 | --- | SPACER |
| 9 | 550-009JKNF | CHECK CARTRIDGE ASSEMBLY |
| 10 | --- | FERRULE, 3/8 TUBE |
| 11 | --- | COMPRESSION NUT, 3/8 TUBE |
| 12 | --- | 'T' BYPASS CONNECTOR, 3/8 TUBE |
| 13 | --- | 'L' BYPASS CONNECTOR, 3/8 TUBE |
| 14 | 131-004KJKNF | THERMOSTATIC CONNECTORS KIT |
| 15 | 131-003KJKNF | THERMOSTATIC NUT/FERRULE KIT |