

INSTALLATION INSTRUCTIONS FOR RXGF-DA & DB FILTER KITS

▲ Recognize this symbol as an indication of Important Safety Information!

▲ WARNING

THESE INSTRUCTIONS ARE INTENDED AS AN AID TO QUALIFIED SERVICE PERSONNEL FOR PROPER INSTALLATION, ADJUSTMENT AND OPERATION OF THIS UNIT. READ THESE INSTRUCTIONS THOROUGHLY BEFORE ATTEMPTING ADJUSTMENT OR OPERATION. FAILURE TO FOLLOW THESE INSTRUCTIONS CAN RESULT IN IMPROPER INSTALLATION, ADJUSTMENT, SERVICE OR MAINTENANCE, POSSIBLY RESULTING IN FIRE, ELECTRICAL SHOCK, PROPERTY DAMAGE, PERSONAL INJURY OR DEATH.

▲ WARNING

TURN OFF ELECTRIC POWER TO THE UNIT BEFORE ATTEMPTING ANY MAINTENANCE. FAILURE TO DO SO CAN CAUSE ELECTRICAL SHOCK RESULTING IN PERSONAL INJURY OR DEATH.

RXGF-DA KIT (UPFLOW FURNACES)

BOTTOM RETURN

Install the filter retainer rod into slots provided in the furnace cabinet as shown in **Figure 1**.

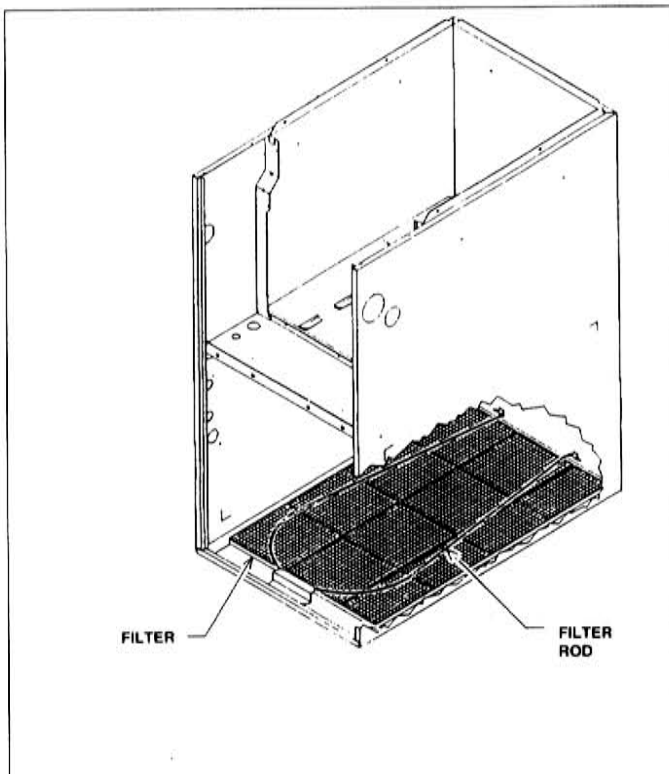


FIGURE 1. FILTER & ROD LOCATION

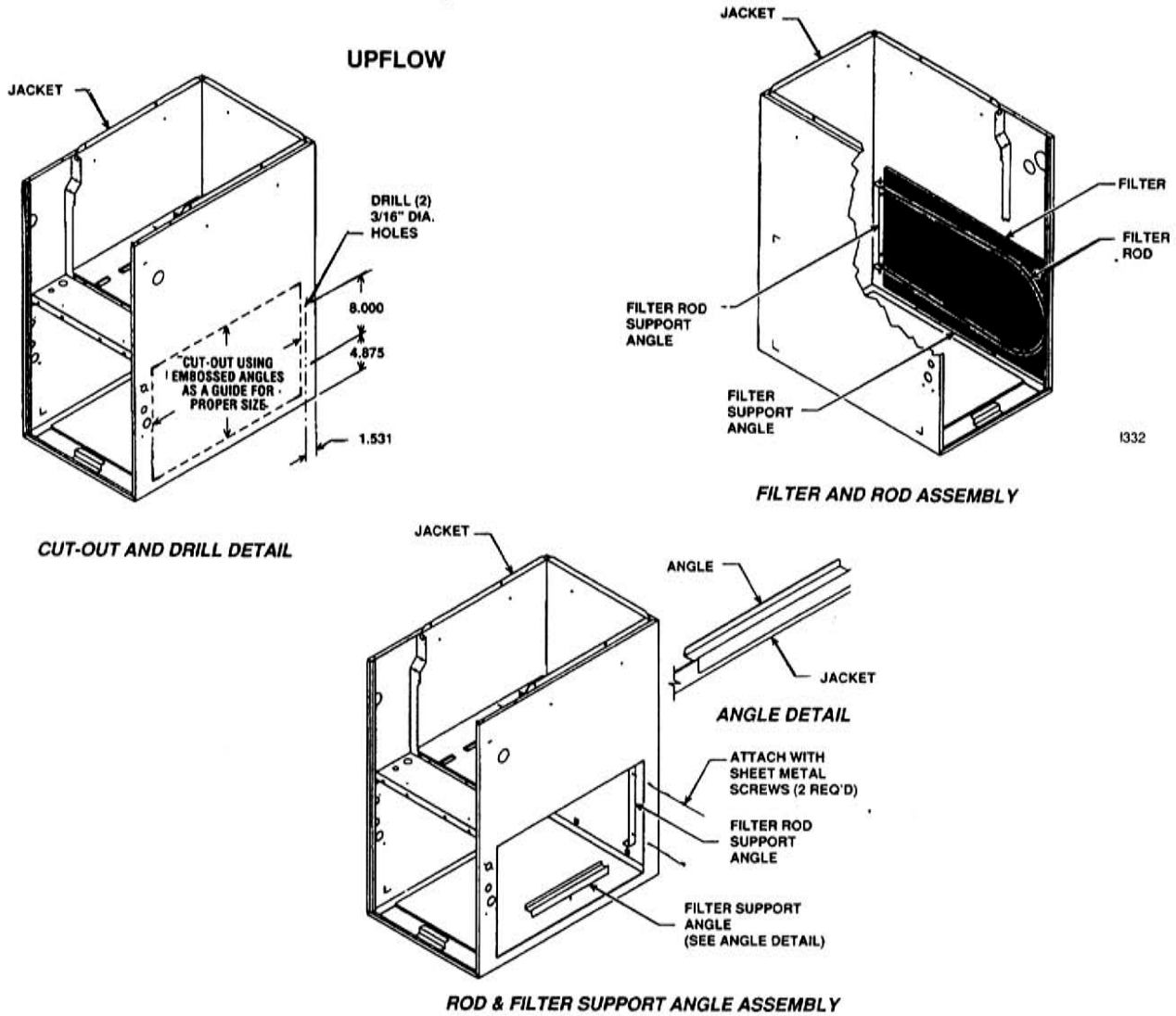
SIDE RETURN

▲ WARNING

A SOLID METAL BASE PLATE, SEE FURNACE CLEARANCE LABEL FOR PART NUMBER, MUST BE IN PLACE WHEN THE FURNACE IS INSTALLED WITH SIDE OR REAR AIR RETURN DUCTS. FAILURE TO INSTALL A BASE PLATE COULD CAUSE PRODUCTS OF COMBUSTION TO BE CIRCULATED INTO THE LIVING SPACE AND CREATE POTENTIALLY HAZARDOUS CONDITIONS, INCLUDING CARBON MONOXIDE POISONING OR DEATH.

1. Cut-out the area for return air using the embossed angles as a guide for proper sizes. See **Figure 2**.
2. Drill (2) 3/16" diameter holes in the cabinet using the dimensions provided in **Figure 2** as reference.
3. Attach the filter rod support angle with the screws provided into the holes drilled in Step 2. See **Figure 2**.
4. Install the filter retainer rod into the support angle as shown in **Figure 2**.

FIGURE 2. FILTER RETAINING RODS (SIDE RETURN)



RXGF-DB (DOWNFLOW FURNACES)

1. Install the filter rack, provided in the kit, from the front of the return air opening to the back of the opening as shown in **Figure 3**.
2. Bend the tabs on the filter rack to support the filter once installed.

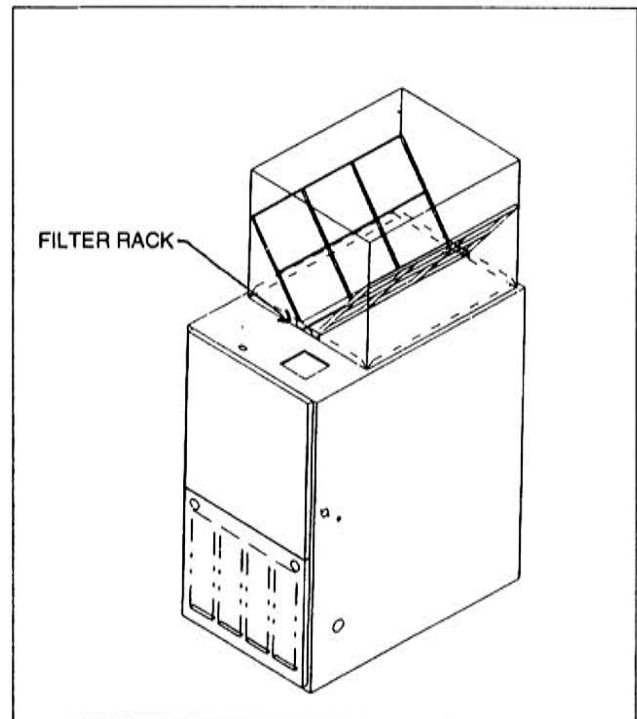


FIGURE 3. RXGF-DB