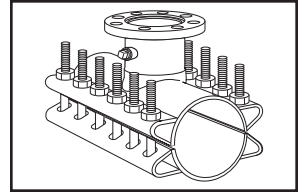


SUBMITTAL INFORMATION

Steel Tapping Sleeve - (FTS-xxx style)



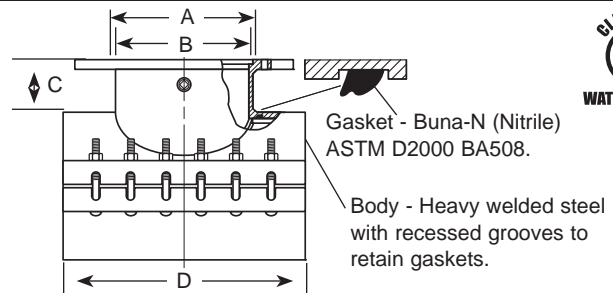
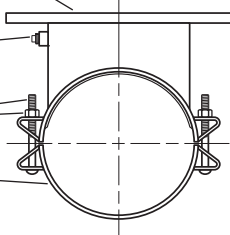
STEEL TAPPING SLEEVE - 4" TO 16"

Flange - ASTM A36 Carbon Steel - Flat face, recessed for standard tapping valve.

3/4-14 Steel Test Plug

Bolts and Nuts - High strength, low alloy

Finish - Shop coat base for field coatings.



NOM. PIPE SIZE	SLEEVE O.D. RANGE	BY	FLANGED SIZE CODE	NOMINAL DIMENSIONS - INCHES				No. OF BOLTS	APPROX. WT. LBS.	SLEEVE NUMBER***	✓ SUBMITTED ITEM(S)
				A	B	C	D				
4"	4.50-4.80	X	3	4-1/64"	3-15/32"	5-3/16"	12"	6	44	*FTS-480 -	
			4	5-1/32"	4-1/4"	5-3/16"	12"	6	45		
6"	6.57-6.73 6.83-7.16 7.20-7.60 7.40-7.73	X	3	4-1/64"	3-15/32"	5-3/16"	12"	6	68	*FTS-673- FTS-716- FTS-760- FTS-773-	
			4	5-1/32"	4-1/4"	5-3/16"	12"	6	70		
			6	7-1/32"	6-5/16"	5-3/16"	12"	6	75		
8"	7.95-8.05 8.36-8.75 8.73-9.12 8.89-9.37 9.27-9.69	X	3	4-1/64"	3-15/32"	5-3/16"	12"	6	74	**FTS-805- *FTS-875- FTS-912- FTS-937- FTS-969-	
			4	5-1/32"	4-1/4"	5-3/16"	12"	6	76		
			6	7-1/32"	6-5/16"	5-3/16"	12"	6	86		
			8	9-1/32"	8-1/4"	5-3/16"	16"	8	93		
10"	9.95-10.10 10.45-10.88 11.03-11.47 11.36-11.80	X	3	4-1/64"	3-15/32"	5-3/16"	12"	6	80	**FTS-1010- FTS-1088- FTS-1147- FTS-1180-	
			4	5-1/32"	4-1/4"	5-3/16"	12"	6	84		
			6	7-1/32"	6-5/16"	5-3/16"	12"	6	93		
			8	9-1/32"	8-1/4"	5-3/16"	16"	8	130		
			10	11-1/32"	10-1/4"	5-3/16"	20"	10	139		
12"	11.76-12.20 12.42-12.88 13.13-13.60 13.60-14.09 14.10-14.58	X	3	4-1/64"	3-15/32"	5-3/16"	12"	6	85	**FTS-1220- FTS-1288- FTS-1360- FTS-1409- FTS-1458-	
			4	5-1/32"	4-1/4"	5-3/16"	12"	6	92		
			6	7-1/32"	6-5/16"	5-3/16"	12"	6	100		
			8	9-1/32"	8-1/4"	5-3/16"	16"	8	140		
			10	11-1/32"	10-1/4"	5-3/16"	20"	10	190		
			12	13-1/32"	12-1/4"	5-3/16"	24"	12	199		
14"-16"	14.59-15.08 15.23-15.72 15.73-16.22 16.30-16.73 16.74-17.26	X	3	4-1/64"	3-15/32"	5-3/16"	12"	6	90	**FTS-1508- FTS-1572- FTS-1622- FTS-1673- FTS-1726-	
			4	5-1/32"	4-1/4"	5-3/16"	12"	6	99		
			6	7-1/32"	6-5/16"	5-3/16"	12"	6	110		
			8	9-1/32"	8-1/4"	5-3/16"	16"	8	152		
			10	11-1/32"	10-1/4"	5-3/16"	20"	10	203		
			12	13-1/32"	12-1/4"	5-3/16"	24"	12	228		

* These units for size on size taps may require a 1/2" under size cutter.

** Size on size for this range not available.

*** To order: Add Flange Size to the Sleeve Number. Example: A 4" flange on 6" cast iron pipe would be FTS-716-4. For stainless steel nuts and bolts option, add "-SH" to the catalog number. Example: FTS-716-4-SH.

FEATURES

- Heavy welded steel meeting ASTM A36 36,000 psi minimum yield
- Bolts and nuts are made of high strength, low alloy per ASTM A242 and AWWA C111
- Ring style gasket is Buna-N (Nitrile) ASTM D2000 BA508
- UL Classified to ANSI/NSF Standard 61
- 4"-12" rated for 250 psi; 14"-24" rated for 200 psi

The Ford Meter Box Company considers the information in this submittal form to be correct at the time of publication. Item and option availability, including specifications, are subject to change without notice. Please verify that your product information is current.



The Ford Meter Box Company, Inc.

P.O. Box 443, Wabash, Indiana U.S.A. 46992-0443

Phone: 260-563-3171 / Fax: 800-826-3487

Overseas Fax: 260-563-0167

www.fordmeterbox.com

04/24/15

Submitted By: