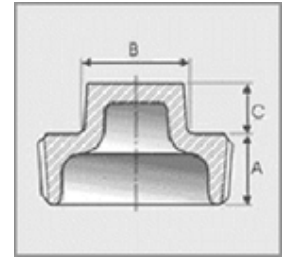


# DIMENSIONAL SPECIFICATIONS

## LEAD-FREE IMPORT BRASS FITTINGS\* 125 LB.

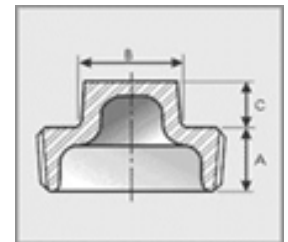
### SQUARE HEAD CORED PLUG

Part #	Size (IN.)	Approx. Net WT. (LB.)	A	B	C
XNL117-08	1/2	0.11	0.54	0.56	0.38
XNL117-12	3/4	0.16	0.55	0.63	0.44
XNL117-16	1	0.25	0.69	0.81	0.50
XNL117-20	1-1/4	0.38	0.71	0.94	0.56
XNL117-24	1-1/2	0.52	0.73	1.13	0.62
XNL117-32	2	0.83	0.76	1.31	0.68
XNL117-40	2-1/2	1.26	1.07	1.50	0.74
XNL117-48	3	1.49	1.13	1.69	0.80
XNL117-64	4	3.20	1.22	2.25	0.92



### SQUARE HEAD SOLID PLUG

Part #	Size (IN.)	Approx. Net WT. (LB.)	A	B	C
XNL117A-06	3/8	0.07	0.41	0.44	0.31
XNL117A-08	1/2	0.12	0.54	0.56	0.38
XNL117A-12	3/4	0.18	0.55	0.63	0.44
XNL117A-16	1	0.38	0.69	0.81	0.50
XNL117A-20	1-1/4	0.59	0.71	0.94	0.56
XNL117A-24	1-1/2	0.89	0.73	1.13	0.62
XNL117A-32	2	1.39	0.76	1.31	0.68
XNL117A-40	2-1/2	2.35	1.07	1.50	0.74
XNL117A-48	3	3.59	1.13	1.69	0.80
XNL117A-64	4	6.82	1.22	2.25	0.92



\*Conforms with lead content requirements for lead-free plumbing as defined by the U.S. Safe Drinking Water Act. Certified <0.25 weighted average % lead.



# MERIT BRASS

DIRECTING THE FLOW OF *Quality*