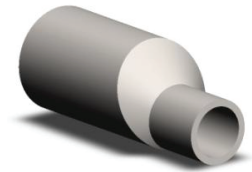
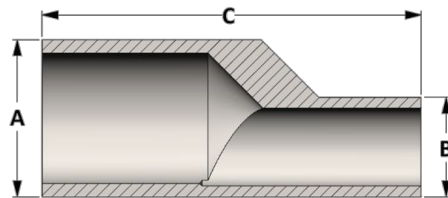
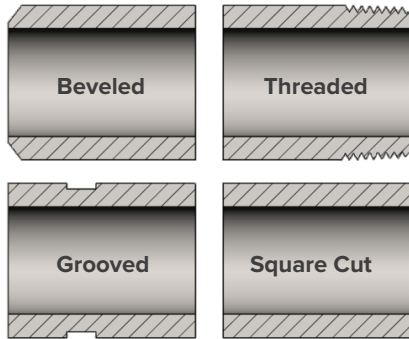


# ECCENTRIC SWAGE NIPPLE



## End Preparations



ISO 9001 and PED Certified

**Specification:** MSS SP-95  
Threaded ends per ASME B1.20.1  
Beveled ends per ASME B16.25

**Material:** Available in a complete range of carbon steels, stainless steels, alloy steels, and non-ferrous metals certified to ASTM, ASME, and Military standards

**Sizes:** 1/4 – 8" in S40/STD, S80/XH, S160, and XXH

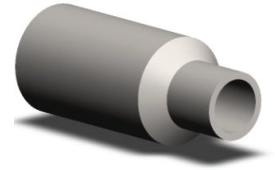
Also available in special pipe schedules and split schedules

All dimensions are in inches. Weights are based on carbon steel.

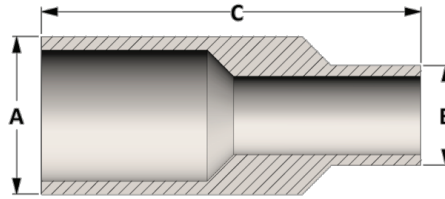
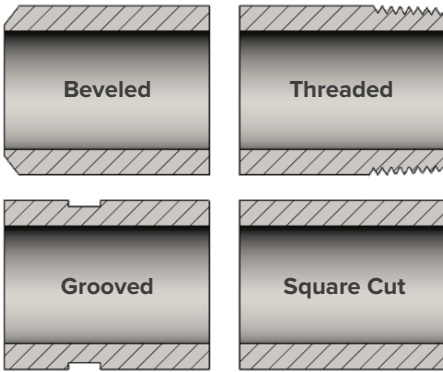
PIPE SIZE		DIMENSIONS			WEIGHTS			
		A	B	C	STD	XH	S160	XXH
1/4	1/8	0.540	0.405	2.250	0.08	0.10	0.11	---
	3/8	0.675	0.405	2.500	0.13	0.15	0.18	---
1/2	1/4	0.675	0.540	2.500	0.13	0.16	0.19	0.22
	3/8	0.840	0.405	2.750	0.21	0.25	0.28	---
3/4	1/4	0.840	0.540	2.750	0.21	0.25	0.28	0.35
	3/8	0.840	0.675	2.750	0.20	0.24	0.29	0.36
1	1/8	1.050	0.405	3.000	0.32	0.37	0.44	---
	1/4	1.050	0.540	3.000	0.31	0.37	0.44	---
	3/8	1.050	0.675	3.000	0.30	0.36	0.45	0.54
1-1/4	1/2	1.050	0.840	3.000	0.29	0.37	0.45	0.57
	3/8	1.315	0.405	3.500	0.61	0.69	0.80	---
	1/4	1.315	0.540	3.500	0.59	0.68	0.79	---
1-1/2	3/8	1.315	0.675	3.500	0.56	0.67	0.78	0.93
	1/2	1.315	0.840	3.500	0.54	0.64	0.77	0.95
	3/4	1.315	1.050	3.500	0.48	0.60	0.76	0.94
2	1/8	1.660	0.405	4.000	0.97	1.11	1.25	---
	1/4	1.660	0.540	4.000	0.95	1.09	1.24	---
	3/8	1.660	0.675	4.000	0.91	1.06	1.23	1.51
	1/2	1.660	0.840	4.000	0.88	1.04	1.21	1.52
	3/4	1.660	1.050	4.000	0.83	1.00	1.21	1.53
3	1	1.660	1.315	4.000	0.80	1.00	1.24	1.61
	1/8	1.900	0.405	4.500	1.38	1.57	---	---
	1/4	1.900	0.540	4.500	1.34	1.55	1.81	---
	3/8	1.900	0.675	4.500	1.30	1.51	1.79	2.13
	1/2	1.900	0.840	4.500	1.25	1.48	1.76	2.13
4	3/4	1.900	1.050	4.500	1.18	1.42	1.74	2.13
	1	1.900	1.315	4.500	1.13	1.39	1.75	2.19
	1-1/4	1.900	1.660	4.500	1.05	1.36	1.72	2.19

PIPE SIZE		DIMENSIONS			WEIGHTS			
		A	B	C	STD	XH	S160	XXH
2	1/2	2.375	0.840	6.500	2.55	3.06	3.90	4.51
	3/4	2.375	1.050	6.500	2.43	2.98	3.85	4.48
	1	2.375	1.315	6.500	2.33	2.88	3.81	4.50
	1-1/4	2.375	1.660	6.500	2.18	2.77	3.71	4.53
	1-1/2	2.375	1.900	6.500	2.09	2.73	3.76	4.61
2-1/2	3/4	2.875	1.050	7.000	3.45	4.23	5.22	6.71
	1	2.875	1.315	7.000	3.32	4.13	5.16	6.71
	1-1/4	2.875	1.660	7.000	3.16	4.01	5.04	6.70
	1-1/2	2.875	1.900	7.000	3.09	3.96	5.09	6.76
3	2	2.875	2.375	7.000	3.02	3.99	5.38	7.03
	1	3.500	1.315	8.000	6.01	7.20	8.98	10.86
	1-1/4	3.500	1.660	8.000	5.65	6.88	8.66	10.72
	1-1/2	3.500	1.900	8.000	5.41	6.70	8.59	10.65
	2	3.500	2.375	8.000	5.03	6.42	8.64	10.67
3-1/2	2-1/2	3.500	2.875	8.000	5.07	6.60	8.77	11.43
	1-1/2	4.000	1.900	8.000	7.23	8.82	---	13.65
	2	4.000	2.375	8.000	6.63	8.32	---	13.39
4	2-1/2	4.000	2.875	8.000	6.43	8.24	---	13.84
	3	4.000	3.500	8.000	6.10	8.14	---	14.39
	1-1/2	4.500	1.900	9.000	9.76	11.79	15.25	17.83
	2	4.500	2.375	9.000	8.98	11.13	14.96	17.50
	2-1/2	4.500	2.875	9.000	8.69	10.98	14.71	18.00
6	3	4.500	3.500	9.000	8.19	10.75	15.05	18.52
	3-1/2	4.500	4.000	9.000	8.00	10.83	---	19.35
	3	6.625	3.500	12.00	27.91	34.08	44.58	50.69
	3-1/2	6.625	4.000	12.00	25.94	32.39	---	49.77
6	4	6.625	4.500	12.00	24.16	30.93	42.90	49.26
	5	6.625	5.563	12.00	20.96	28.63	42.87	49.45

# CONCENTRIC SWAGE NIPPLE



## End Preparations



ISO 9001 and PED Certified

**Specification:** MSS SP-95  
Threaded ends per ASME B1.20.1  
Beveled ends per ASME B16.25

**Material:** Available in a complete range of carbon steels, stainless steels, alloy steels, and non-ferrous metals certified to ASTM, ASME, and Military standards

**Sizes:** 1/4 – 8" in S40/STD, S80/XH, S160, and XXH

Also available in special pipe schedules and split schedules

All dimensions are in inches. Weights are based on carbon steel.

PIPE SIZE	DIMENSIONS			WEIGHTS				
	A	B	C	STD	XH	S160	XXH	
1/4	1/8	0.540	0.405	2.250	0.07	0.09	0.10	0.12
3/8	1/8	0.675	0.405	2.500	0.11	0.14	0.16	0.19
	1/4	0.675	0.540	2.500	0.12	0.15	0.17	0.21
1/2	1/8	0.840	0.405	2.750	0.19	0.22	0.26	0.31
	1/4	0.840	0.540	2.750	0.19	0.23	0.26	0.33
3/4	3/8	0.840	0.675	2.750	0.19	0.23	0.27	0.35
	1/8	1.050	0.405	3.000	0.38	0.43	0.50	0.58
	1/4	1.050	0.540	3.000	0.38	0.43	0.51	0.60
1	3/8	1.050	0.675	3.000	0.36	0.43	0.52	0.62
	1/2	1.050	0.840	3.000	0.35	0.44	0.53	0.66
	1/8	1.315	0.405	3.500	0.58	0.65	0.76	0.88
1-1/4	1/4	1.315	0.540	3.500	0.57	0.66	0.76	0.90
	3/8	1.315	0.675	3.500	0.56	0.65	0.76	0.91
	1/2	1.315	0.840	3.500	0.55	0.65	0.78	0.95
1-1/2	3/4	1.315	1.050	3.500	0.51	0.63	0.79	0.98
	1/8	1.660	0.405	4.000	1.00	1.13	1.27	1.52
	1/4	1.660	0.540	4.000	1.00	1.14	1.28	1.54
2	3/8	1.660	0.675	4.000	0.98	1.13	1.28	1.56
	1/2	1.660	0.840	4.000	0.96	1.12	1.28	1.59
	3/4	1.660	1.050	4.000	0.92	1.09	1.29	1.61
2-1/2	1	1.660	1.315	4.000	0.87	1.07	1.30	1.67
	1/8	1.900	0.405	4.500	1.34	1.53	1.78	2.08
	1/4	1.900	0.540	4.500	1.34	1.53	1.78	2.11
3	3/8	1.900	0.675	4.500	1.32	1.53	1.79	2.13
	1/2	1.900	0.840	4.500	1.31	1.53	1.80	2.16
	3/4	1.900	1.050	4.500	1.27	1.50	1.82	2.19
3-1/2	1	1.900	1.315	4.500	1.22	1.48	1.83	2.27
	1/8	2.250	0.405	5.000	2.00	2.25	2.50	2.80
	1/4	2.250	0.540	5.000	2.00	2.25	2.50	2.80
4	3/8	2.250	0.675	5.000	1.90	2.15	2.40	2.70
	1/2	2.250	0.840	5.000	1.80	2.05	2.30	2.60
	3/4	2.250	1.050	5.000	1.70	1.95	2.20	2.50
5	1	2.250	1.315	5.000	1.60	1.85	2.10	2.40
	1/8	2.600	0.405	5.500	2.50	2.80	3.10	3.50
	1/4	2.600	0.540	5.500	2.50	2.80	3.10	3.50
6	3/8	2.600	0.675	5.500	2.40	2.70	3.00	3.40
	1/2	2.600	0.840	5.500	2.30	2.60	2.90	3.30
	3/4	2.600	1.050	5.500	2.20	2.50	2.80	3.20

PIPE SIZE	DIMENSIONS			WEIGHTS				
	A	B	C	STD	XH	S160	XXH	
2	1/2	2.375	0.840	6.500	2.73	3.22	4.05	4.64
	3/4	2.375	1.050	6.500	2.67	3.18	4.06	4.67
	1	2.375	1.315	6.500	2.60	3.14	4.06	4.73
	1-1/4	2.375	1.660	6.500	2.44	3.03	3.95	4.77
2-1/2	1-1/2	2.375	1.900	6.500	2.30	2.93	3.96	4.80
	3/4	2.875	1.050	7.000	3.98	4.75	5.71	7.17
	1	2.875	1.315	7.000	3.93	4.72	5.72	7.23
	1-1/4	2.875	1.660	7.000	3.81	4.64	5.66	7.29
3	1-1/2	2.875	1.900	7.000	3.70	4.57	5.68	7.33
	2	2.875	2.375	7.000	3.44	4.40	5.78	7.42
	1	3.500	1.315	8.000	6.86	8.01	9.74	11.57
	1-1/4	3.500	1.660	8.000	6.65	7.86	9.61	11.59
3-1/2	1-1/2	3.500	1.900	8.000	6.47	7.73	9.59	11.60
	2	3.500	2.375	8.000	6.03	7.41	9.60	11.61
	2-1/2	3.500	2.875	8.000	5.78	7.30	9.46	12.09
	1-1/2	4.000	1.900	8.000	8.36	9.91	---	14.60
4	2	4.000	2.375	8.000	7.90	9.56	---	14.54
	2-1/2	4.000	2.875	8.000	7.59	9.38	---	14.92
	3	4.000	3.500	8.000	6.79	8.81	---	15.03
	1-1/2	4.500	1.900	9.000	14.42	16.38	19.75	22.23
5	2	4.500	2.375	9.000	13.56	15.66	19.40	21.88
	2-1/2	4.500	2.875	9.000	12.80	15.06	18.75	21.96
	3	4.500	3.500	9.000	11.22	13.76	18.03	21.47
	3-1/2	4.500	4.000	9.000	9.72	12.53	---	21.01
6	3	6.625	3.500	12.00	28.00	34.08	44.36	50.24
	3-1/2	6.625	4.000	12.00	26.90	33.28	---	50.32
	4	6.625	4.500	12.00	25.68	32.40	44.21	50.47
	5	6.625	5.563	12.00	22.55	30.21	44.35	50.89