



BRADFORD WHITE[®]
W A T E R H E A T E R S

**LIGHT DUTY COMMERCIAL ELECTRIC
REPLACEMENT PARTS LIST**

**Light Duty Energy Saver Upright
Light Duty Energy Saver Lowboy**



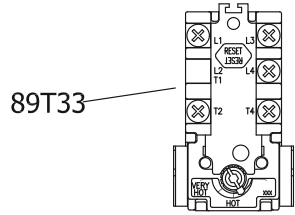
Includes Hydrojet[®]
Total Performance System

***Effective: April 1, 2012
ECO 7496***

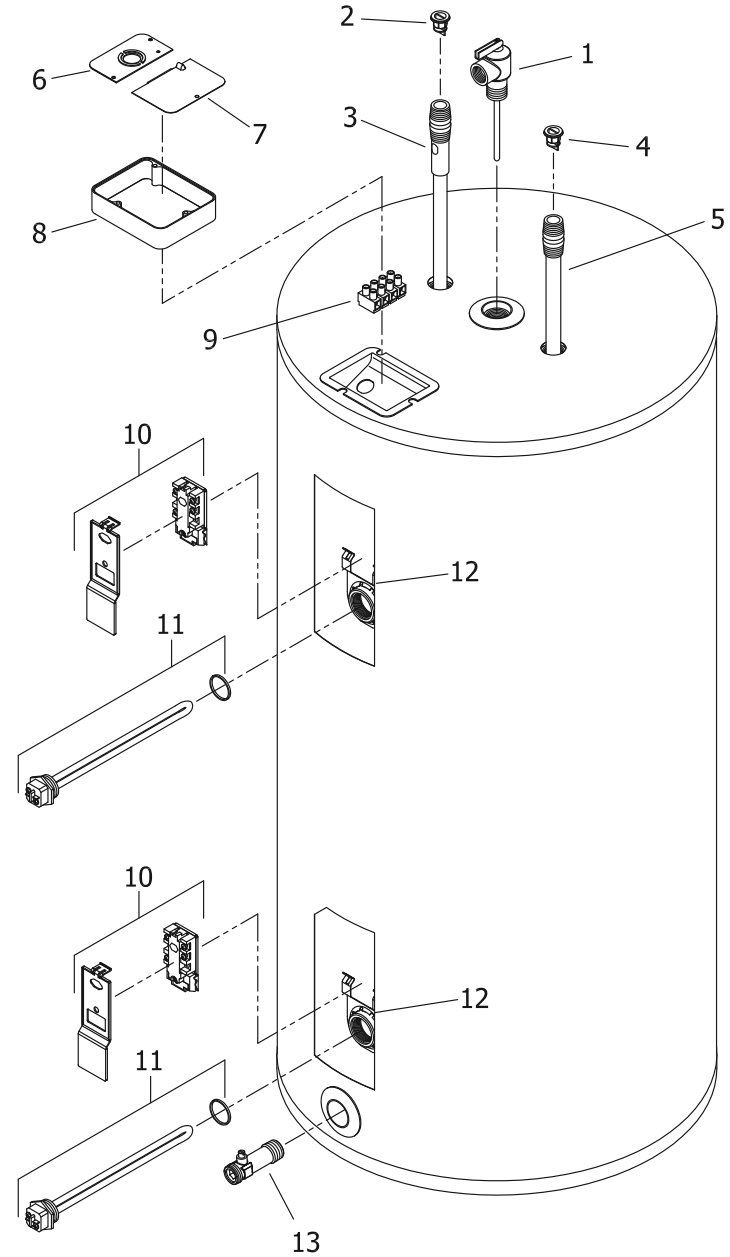
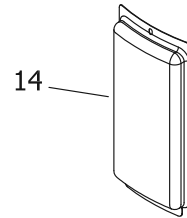
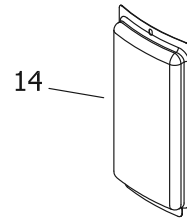
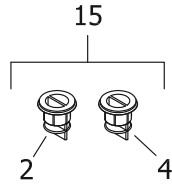
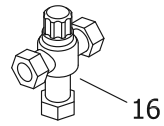
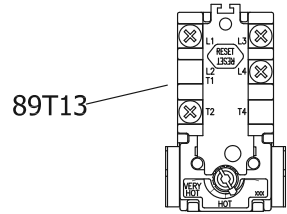
**NOTE: BOTH MODEL AND SERIAL
NUMBERS ARE REQUIRED FOR
ORDERING REPLACEMENT PARTS**

Dimensions and specifications
subject to change without notice.

TOP LOCATION
 ● Double element water heater.



BOTTOM LOCATION
 ● Single element water heater.
 ● Double element water heater.



Item Description	Model	Model	Model	Model	Model
	LD30R	LD40S	LD50S	LD65R	LD80R
1 T&P Relief Valve	230-40594-02	230-32920-01	230-32920-01	230-32920-01	230-32920-01
2 Heat Trap Insert (Outlet)	239-45167-00	239-45167-00	239-45167-00	239-45167-00	239-45167-00
3 Hot Water Outlet Anode Magnesium ♦	224-47776-16	224-47776-05	224-47776-05	224-47776-07	224-47776-08
Aluminum ♦	224-32999-24-16	224-32999-06	224-32999-06	224-32999-26	224-32999-07
A420 (Aluminum)#	224-49560-08	224-49560-08	224-49560-08	224-49560-08	224-49560-08
4 Heat Trap Insert (Inlet)	239-45073-00	239-45073-00	239-45073-00	239-45073-00	239-45073-00
5 Cold Water Inlet Tube Polypropylene ♦♦	229-39625-25	229-39625-08	229-39625-08	229-39625-27	229-39625-27
Polysulfone (NC Code) ♦♦	229-39628-28	229-39628-08	229-39628-08	229-39628-10	229-39628-10
6 Cover Conduit/Ground	243-39451-00	243-39451-00	243-39451-00	243-39451-00	243-39451-00
7 Cover Junction box	243-39452-00	243-39452-00	243-39452-00	243-39452-00	243-39452-00
8 Junction Box Extender	239-40587-00	239-40587-00	239-40587-00	239-40587-00	239-40587-00
9 Terminal Block (4 pole)	239-47294-00	239-47294-00	239-47294-00	239-47294-00	239-47294-00
10 Upper Thermostat with High Limit (89T13) & Protector ▲	265-48641-00	265-48641-00	265-48641-00	265-48641-00	265-48641-00
Lower Thermostat with High Limit (89T33) & Protector ▲■	265-40694-00	265-40694-00	265-40694-00	265-40694-00	265-40694-00
11 Heating Element 240V 4500 with gasket*	265-48642-00	265-48642-00	265-48642-00	265-48642-00	265-48642-00
12 Thermostat Mounting Bracket	239-44479-00	239-44479-00	239-44479-00	239-44479-00	239-44479-00
13 Brass Drain Valve	265-42351-02	265-42351-02	265-42351-02	265-42351-02	265-42351-02
14 Access Cover	243-36618-02	243-36618-02	243-36618-02	243-36618-02	243-36618-02
15 Kit-Heat Trap Insert	265-45420-00	265-45420-00	265-45420-00	265-45420-00	265-45420-00
16 ASSE Approved Mixing Valve	239-43740-01	239-43740-01	239-43740-01	239-43740-01	239-43740-01

♦ Order with item 2.

♦♦ Order with item 4.

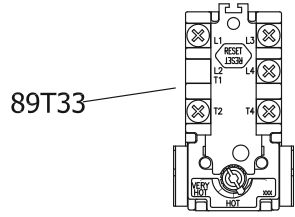
▲ Thermostat protector provided with thermostat.

* For other voltage and wattage combinations, refer to heating element on pages 6 & 7.

■ These parts are packaged together.

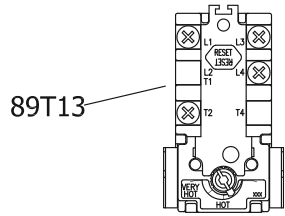
A420 Anode may need to be cut to length

TOP LOCATION
 ● Double element water heater.

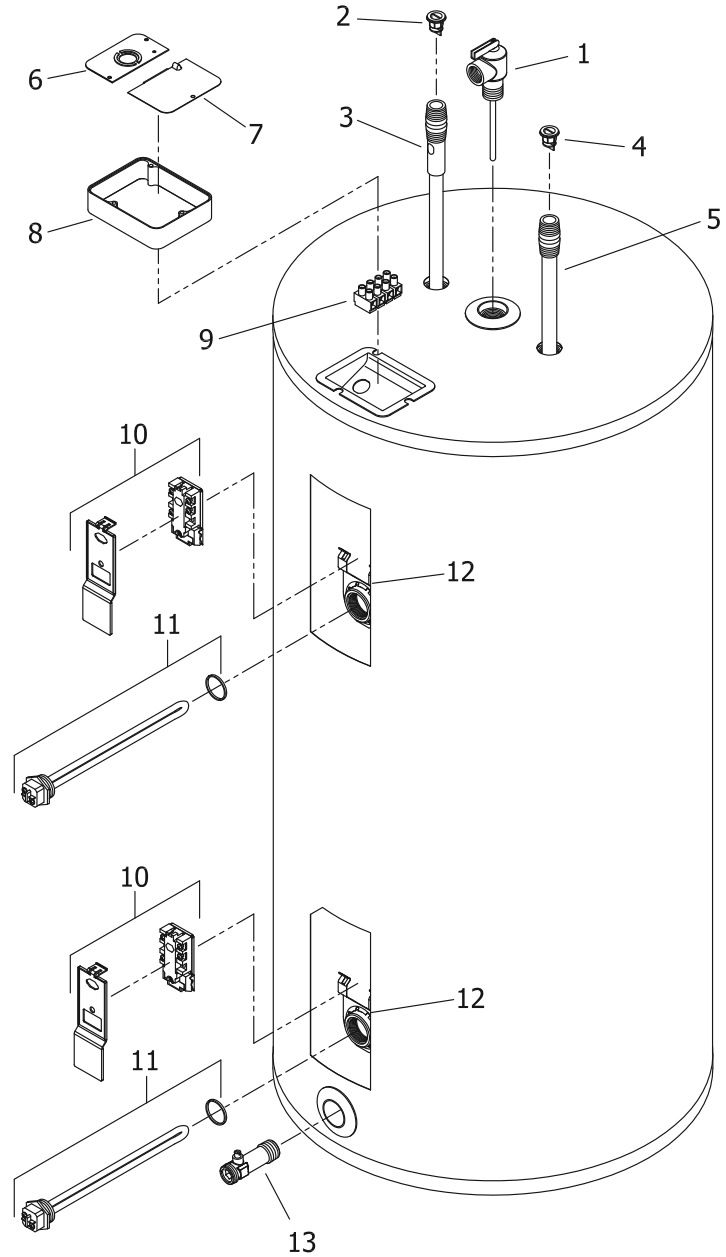
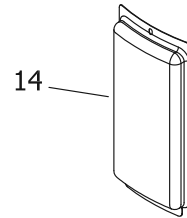
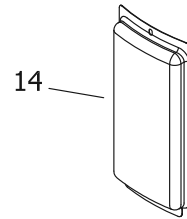
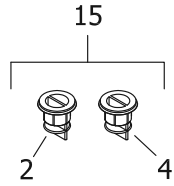
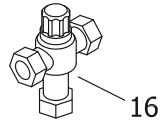


89T33

BOTTOM LOCATION
 ● Single element water heater.
 ● Double element water heater.



89T13



Item	Description	Model LD120R	Model LD20L	Model LD30L	Model LD40L	Model LD50L
1	T&P Relief Valve	230-40594-02	230-32920-01	230-40594-02	230-40594-02	230-40594-02
2	Heat Trap Insert (Outlet)	239-45167-00	239-45167-00	239-45167-00	239-45167-00	239-45167-00
3	Hot Water Outlet Anode Magnesium ♦	224-47780-01	224-47776-02	224-47776-03	224-47776-03	224-47776-03
	Aluminum ♦	224-45036-01	224-32999-23	224-32999-27	224-32999-27	224-32999-27
	A420(Aluminum)#	224-49560-08	224-49560-08	224-49560-08	224-49560-08	224-49560-08
4	Heat Trap Insert (Inlet)	239-45073-00	239-45073-00	239-45073-00	239-45073-00	239-45073-00
5	Cold Water Inlet Tube Polypropylene ♦♦	229-45031-01	229-39625-01	229-39625-02	229-39625-02	229-39625-02
	Polysulfone (NC Code) ♦♦	229-45032-01	229-39628-01	229-39628-02	229-39628-02	229-39628-02
6	Cover Conduit/Ground	243-39451-00	243-39451-00	243-39451-00	243-39451-00	243-39451-00
7	Cover Junction box	243-39452-00	243-39452-00	243-39452-00	243-39452-00	243-39452-00
8	Junction Box Extender	239-40587-00	239-40587-00	239-40587-00	239-40587-00	239-40587-00
9	Terminal Block (4 pole)	239-47294-00	239-47294-00	239-47294-00	239-47294-00	239-47294-00
10	Upper Thermostat with High Limit (89T13) & Protector ▲	265-48641-00	265-48641-00	265-48641-00	265-48641-00	265-48641-00
	Lower Thermostat with High Limit (89T33) & Protector ▲■	265-40694-00	265-40694-00	265-40694-00	265-40694-00	265-40694-00
11	Heating Element 240V 4500 with gasket*	265-48642-00	265-48642-00	265-48642-00	265-48642-00	265-48642-00
12	Thermostat Mounting Bracket	239-44479-00	239-44479-00	239-44479-00	239-44479-00	239-44479-00
13	Brass Drain Valve	265-42351-02	265-42351-02	265-42351-02	265-42351-02	265-42351-02
14	Access Cover	243-36618-02	243-36618-02	243-36618-02	243-36618-02	243-36618-02
15	Kit-Heat Trap Insert	265-45420-00	265-45420-00	265-45420-00	265-45420-00	265-45420-00
16	ASSE Approved Mixing Valve	239-43740-01	239-43740-01	239-43740-01	239-43740-01	239-43740-01

♦ Order with item 2.

♦♦ Order with item 4.

▲ Thermostat protector provided with thermostat.

* For other voltage and wattage combinations, refer to heating elements on page 6 & 7.

■ These parts are packaged together.

A420 Anode may need to be cut to length

Voltage & Wattage Conversion Kits

Element Wattage	Non-Simultaneous	Simultaneous Max Wattage	Voltage			
			120	208	240	277
1500	1500	3000	265-46409-01	265-46409-05	265-46409-13	265-45409-16
2000	2000	4000	265-46409-02 *	265-46409-06	265-46409-05	265-45409-17
2500	2500	5000	265-46409-03 *	265-46409-07	265-46409-06	265-45409-18
3000	3000	6000	265-46409-04 *	265-46409-08	265-46409-14	265-45409-19
3500	3500	7000	N/A	265-46409-09	265-46409-07	N/A
4000	4000	8000	N/A	265-46409-10	265-46409-08	265-45409-20
4500	4500	9000	N/A	265-46409-11	265-46409-09	265-45409-21
5000	5000	10000	N/A	265-46409-12	265-46409-15	265-45409-22
5500	5500	11000	N/A	265-46409-46 *	265-46409-10	265-46409-40
6000	6000	12000	N/A	265-46409-47 *	265-46409-48 *	265-45409-23

			380	415	480
1500	1500	3000	265-46409-24	265-46409-41	265-46409-32
2000	2000	4000	265-46409-43	265-46409-24	265-46409-33
2500	2500	5000	265-46409-25	265-46409-43	265-46409-34
3000	3000	6000	265-46409-26	265-46409-25	265-46409-35
3500	3500	7000	265-46409-27	265-46409-26	N/A
4000	4000	8000	265-46409-29	265-46409-27	265-46409-36
4500	4500	9000	265-46409-30	265-46409-28	265-46409-37
5000	5000	10000	265-46409-31	265-46409-29	265-46409-38
5500	5500	11000	265-46409-44	265-46409-30	265-46409-42
6000	6000	12000	265-46409-45	265-46409-31	265-46409-39

* These kits contain only one element for single element water heaters only.

Heating Elements (Copper) for:

Light Duty (LD) Commercial Series

Medium Duty (E32) Commercial Series

Commercial (MII) Series

Wattage	120 Volt	208 Volt	240 Volt	277 Volt	380 Volt	415 Volt	480 Volt	600 Volt
1000W ▲	220-42540-01	220-42544-01	220-42546-01	N/A	N/A	N/A	N/A	N/A
1250W ▲	N/A	N/A	220-42544-13	N/A	N/A	N/A	N/A	N/A
1500W ▲	220-42540-02	220-42544-03	220-42544-01	220-42546-01	220-42550-10	N/A	220-42552-01	N/A
1500W (LWD) ▲	220-42540-03	N/A	220-42544-02	N/A	N/A	N/A	N/A	N/A
2000W ▲	220-42540-04	220-42544-04	220-42544-03	220-42546-09	220-42548-04	220-42550-10	220-42552-09	N/A
2500W ▲	220-42540-05	220-42544-06	220-42544-04	220-42546-03	220-42550-11	220-42548-04	220-42552-03	N/A
3000W ▲	220-42540-07	220-42544-14	220-42544-15	220-42546-04	220-42550-09	220-42550-11	220-42552-04	N/A
3500W ▲▲	N/A	220-42544-08	220-42544-06	N/A	220-42550-07	220-42550-09	N/A	N/A
3800W ▲▲	N/A	N/A	220-42546-07	N/A	N/A	N/A	N/A	N/A
4000W ▲▲	N/A	220-42544-11	220-42544-14	220-42546-05	220-42550-03	220-42550-07	220-42552-05	N/A
4500W ▲▲	N/A	220-42544-12	220-42544-08	220-42546-06	220-42550-04	220-42550-02	220-42552-06	N/A
4500W (LWD) ▲▲	N/A	N/A	220-42544-09	N/A	N/A	N/A	N/A	N/A
5000W ▲▲	N/A	220-42542-02	220-42544-10	220-42546-07	220-42550-05	220-42550-03	220-42552-07	N/A
5500W ▲▲	N/A	220-42542-03	220-42544-11	N/A	220-42548-03	220-42550-04	N/A	N/A
6000W ▲▲	N/A	220-42542-04	220-42544-12	220-42546-08	220-42548-02	220-42550-05	220-42552-08	N/A
Element gasket ^	223-34019-00	223-34019-00	223-34019-00	223-34019-00	223-34019-00	223-34019-00	223-34019-00	223-34019-00
Element plug	223-34020-00	223-34020-00	223-34020-00	223-34020-00	223-34020-00	223-34020-00	223-34020-00	223-34020-00

(LWD) = Low Watt Density

For bagged elements that include gasket, change part number prefix to 265- (example: 265-42540-01).

▲ For 12" diameter tanks and above.

▲▲ For 14" diameter tanks and above.

* For 16" diameter tanks and above.

** For 18" diameter tanks and above.

^ Element gaskets should be ordered with elements.

Light Duty (LD) Commercial Series
Medium Duty (E32) Commercial Series
Commercial (MII) Series

Wattage	120 Volt	208 Volt	240 Volt	277 Volt	380 Volt	415 Volt	480 Volt	600 Volt
1000W ▲	N/A	N/A	N/A	N/A	N/A	N/A	N/A	N/A
1250W ▲	N/A	N/A	N/A	N/A	N/A	N/A	N/A	N/A
1500W ▲	220-42541-02	220-42545-02	220-42545-13	N/A	220-42551-12	220-42551-11	N/A	N/A
1500W (LWD) ▲	N/A	N/A	N/A	N/A	N/A	N/A	N/A	N/A
2000W ▲	N/A	220-42545-14	220-42545-02	220-42547-07	220-42549-04	220-42551-12	220-42553-01	N/A
2500W ▲	N/A	220-42545-11	220-42545-14	N/A	220-42551-13	N/A	N/A	N/A
3000W ▲	N/A	220-42545-12	220-42545-15	220-42547-08	220-42551-10	220-42551-13	220-42553-08	N/A
3500W ▲▲	N/A	220-42545-07	220-42545-11	N/A	220-42551-05	220-42551-10	N/A	N/A
3800W ▲▲	N/A	N/A	220-42547-09	N/A	N/A	N/A	N/A	N/A
4000W ▲▲	N/A	220-42545-09	220-42545-12	220-42547-03	220-42551-07	220-42551-05	220-42553-03	N/A
4500W ▲▲	N/A	220-42545-10	220-42545-07	220-42547-04	220-42551-08	220-42551-06	220-42553-04	N/A
4500W (LWD) ▲▲	N/A	N/A	N/A	N/A	N/A	N/A	N/A	N/A
5000W ▲▲	N/A	220-42543-01	220-42545-08	220-42547-09	220-42551-09	220-42551-07	220-42553-05	N/A
5500W ▲▲	N/A	220-42543-02	220-42545-09	220-42547-05	220-42549-03	220-42551-08	220-42553-06	N/A
6000W ▲▲	N/A	220-42543-03	220-42545-10	220-42547-06	220-42549-02	220-42551-09	220-42553-07	N/A
Element gasket ^	223-34019-00	223-34019-00	223-34019-00	223-34019-00	223-34019-00	223-34019-00	223-34019-00	223-34019-00
Element plug	223-34020-00	223-34020-00	223-34020-00	223-34020-00	223-34020-00	223-34020-00	223-34020-00	223-34020-00

(LWD) = Low Watt Density

For bagged elements that include gasket, change part number prefix to 265- (example: 265-42541-02).

Element wrench *** 265-35897-12

Adapt-a-flange kit ** 265-36968-12

*** For use with residential, LD, E32, and MII series heating elements only. Not for use with commercial "A" series heating elements.

▲ For 12" diameter tanks and above.

▲▲ For 14" diameter tanks and above.

* For 16" diameter tanks and above.

** For 18" diameter tanks and above.

^ Element gaskets should be ordered with elements.



BRADFORD WHITE®

W A T E R H E A T E R S

Ambler, PA

For U.S. and Canada field service,
contact your professional installer or
local Bradford White sales representative.

Sales/800-523-2931
Fax/215-641-1670
Parts Fax/215-641-2180

Technical Support/800-334-3393
Fax/269-795-1089

Warranty/800-531-2111
Fax/269-795-1089

International:
Telephone/215-641-9400
Telefax/215-641-9750



BRADFORD WHITE-CANADA® INC.

Mississauga, ON

Sales/866-690-0961
905-238-0100

Fax/905-238-0105

Technical Support/800-334-3393

Email

parts@bradfordwhite.com
techserv@bradfordwhite.com

www.bradfordwhite.com