

Features

- Metal construction.
- Intended for use with Rite-Temp® or HiFlow Rite-Temp® valves.
- Includes showerhead with arm and flange, 5-1/4" (133 mm) diverter spout slip-fit connection, and faceplate with handle.
- 2.0 gal/min (7.6 l/min) maximum flow rate showerhead with Katalyst® Spray Technology.

Required Accessories

- K- 2971-KS 3/4" Pressure-balancing Valve
or
K- 304-CS Pressure-balancing Valve With Stops
or
K- 304-CX Pressure-balancing Valve Less Stops
or
K- 304-K Pressure-balancing Valve Less Stops
or
K- 304-KS Pressure-balancing Valve With Stops
or
K- 304-PS Pressure-balancing Valve With Stops
or
K- 304-PX Pressure-balancing Valve Less Steps
or
K- 304-US Pressure-balancing Valve With Stops
or
K- 304-UX Pressure-balancing Valve Less Stops

Optional Accessories

88526 Thin Wall Trim Kit



Codes/Standards

ASME A112.18.1/CSA B125.1
DOE - Energy Policy Act 1992
EPA WaterSense®

KOHLER® Faucet Lifetime Limited Warranty

See website for detailed warranty information.

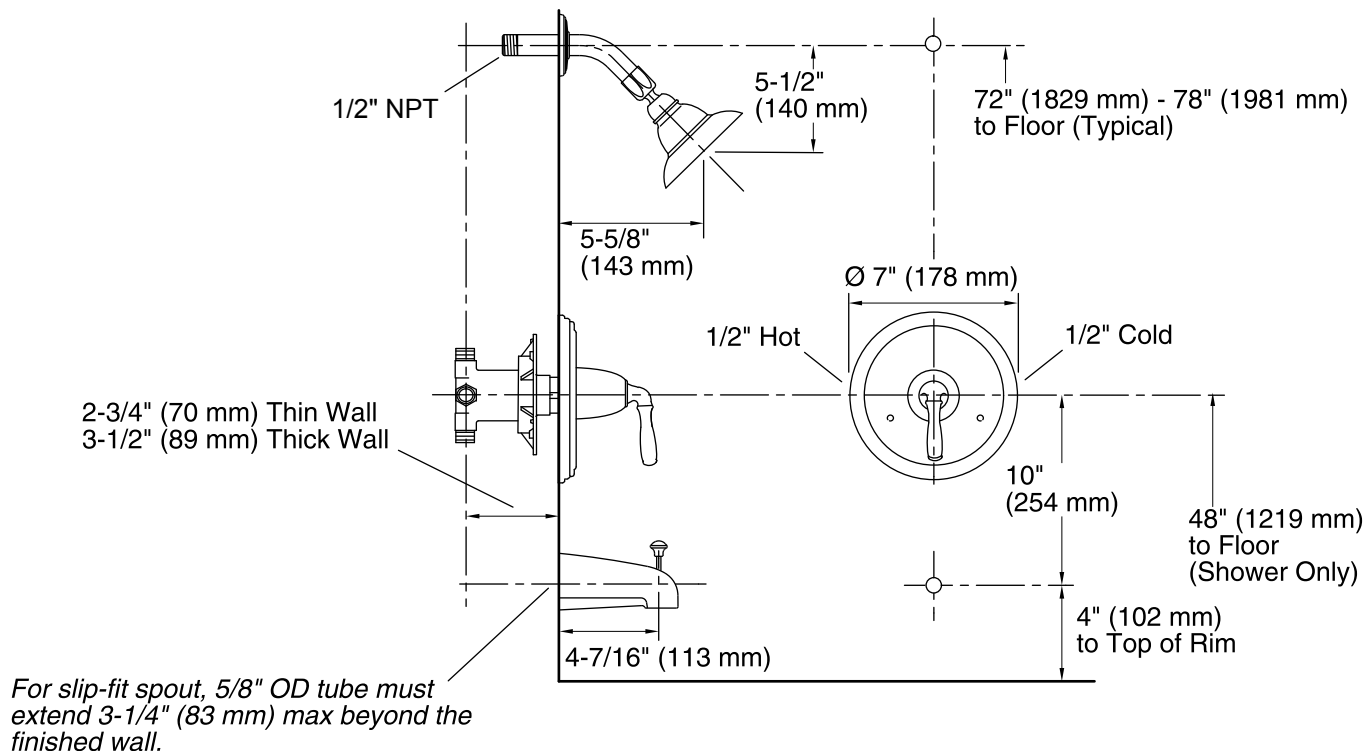
Available Color/Finishes

Color tiles intended for reference only.

Color	Code	Description
-------	------	-------------



SN	Vibrant® Polished Nickel
----	--------------------------



Complete bath and shower faucet with slip-fit diverter spout.

Technical Information

All product dimensions are nominal.

Spout reach: 4-7/16" (113 mm)

Showerhead:

Rated maximum flow: 2 gal/min (7.6 l/min)

Pressure: 80 psi (5.5 bar)

Notes

For use with automatic compensating valves rated at 1.7 gal/min (6.4 l/min) or less.

Install this product according to the installation guide.

NOTICE: Risk of product damage. Long screws, for installing trim, can damage the K-2971-KS valve. Consult the trim installation guide to verify if the thin wall installation kit (88526) is needed.

Avoid cross-flow conditions. Do not install shut-off device on either valve outlet.

Install straight pipe or tube drop of 7" (178 mm) to 18" (457 mm) with single elbow between valve and wall-mount spout.