



No. 20 Tee



No. 10 Elbow

1.0 PRODUCT DESCRIPTION

Available Sizes

- ¾ – 60"/DN20 – DN1500

Maximum Working Pressure

- Pressure ratings for Victaulic standard fittings conform to the ratings of Victaulic Style 177N couplings (refer to [publication 06.24](#) for more information).

Application

- Connects pipe, provides change in direction and adapts sizes or components
- Supplied with Victaulic OGS grooves
- Exclusively for use with Victaulic couplings, valves, accessories and pipe which feature ends formed with the Victaulic OGS groove profile

Pipe Materials

- Carbon steel or stainless steel

NOTE

- These fittings are not intended for use with Victaulic plain end couplings. Intended for use only in grooved piping systems. When connecting wafer or lug type butterfly valves directly to Victaulic fittings using Style 741 or Style 743 flange adapters, be sure to check disc clearance dimensions with I.D. dimension of fitting.

ALWAYS REFER TO ANY NOTIFICATIONS AT THE END OF THIS DOCUMENT REGARDING PRODUCT INSTALLATION, MAINTENANCE OR SUPPORT.

System No.		Location	
Submitted By		Date	

Spec Section		Paragraph	
Approved		Date	

1.0 PRODUCT DESCRIPTION (CONTINUED)

Other Fitting Styles



AGS - Advanced Groove System
from 14 – 60"/DN350 – DN1500
[Publication 20.05](#)



Ductile Iron for AWWA size pipe
[Publication 23.05](#)



Stainless Steel
[Publication 17.16](#)



XL fittings for abrasive services
[Publication 07.07](#)



Galvanized
[Publication 07.01](#) for Original Groove Fittings
[Publication 20.05](#) for AGS Fittings



Aluminum
[Publication 21.03](#)



Extra Heavy EndSeal "ES"
[Publication 07.03](#)



Copper
[Publication 22.04](#)



Shouldered Ends
[Publication 07.06](#)



Plain End
[Publication 14.04](#)

2.0 CERTIFICATION/LISTINGS



NOTES

- When supplied as “hot dip galvanized” the following fittings are UL Classified in accordance with ANSI/NSF 61 and for use on cold +86°F/+30°C potable water service and ANSI/NSF 372: No. 10 90° Elbow, No. 11 45° Elbow, No. 12 22 ½° Elbow, No. 13 11 ¼° Elbow, No. 100 90° Long Radius Elbow, No. 110 45° Long Radius Elbow, No. 20 Tee, No. 25 Tee with Grooved Branch, No. 30 45° Lateral, No. 60 Cap, No. 50 Concentric Reducers, No. 51 Eccentric Reducers.
- The following Victaulic fittings are VdS approved: No.10 90° Elbow, No.11 45° Elbow, No.20 Tee and No.60 Cap.
- The following Victaulic fittings are LPCB approved: No.10 90° Elbow, No.11 45° Elbow, No.12 22 ½° Elbow, No.13 11 ¼° Elbow, No.30 45° Lateral, No.30-R Reducing Lateral, No.100 Long Radius Elbow, No.110 Long Radius Elbow, No.20 Tee, No.35 Cross, No.60 Cap, No.25 Reducing Tee, No.33 True Wye, No.50 Concentric Reducer, No.51 Eccentric Reducer and No.29M Tee with Threaded Branch.
- The following Victaulic fittings are FM approved: No.10 90° Elbow, No.11 45° Elbow, No.12 22 ½° Elbow, No.13 11 ¼° Elbow, No.30 45° Lateral, No.100 Long Radius Elbow, No.20 Tee, No.35 Cross, No.60 Cap, No.25 Reducing Tee and No.50 Concentric Reducer.

3.0 SPECIFICATIONS - MATERIAL

Fitting: (specify choice)

- ☐ Standard: Ductile iron conforming to ASTM A536, Grade 65-45-12.
- ☐ Optional: Segmentally welded steel as shown under nipples

Nipples: (specify choice)

- ☐ ¾ – 4"/DN20 – DN100: Carbon steel, Schedule 40, conforming to ASTM A53, Type F
- ☐ 5 – 6"/DN125 – DN150: Carbon steel, Schedule 40, conforming to ASTM A53, Type E or S, Gr. B
- ☐ 8 – 12"/DN200 – DN300: Carbon steel, Schedule 30 or 40, conforming to ASTM A53, Type E or S, Gr. B

Flanged Adapter Nipples: (specify choice)

- ☐ Class 125 Flange: Cast iron conforming to ANSI B16.1
- ☐ Class 150 Flange: Carbon steel conforming to ANSI B16.5, raised or flat face
- ☐ Class 300 Flange: Carbon steel conforming to ANSI B16.5, raised or flat face

Fitting Coating: (specify choice)

- ☐ Standard: Orange enamel
- ☐ Optional: Hot dip galvanized and others. Some fittings supplied electroplated as standard – see product specifications

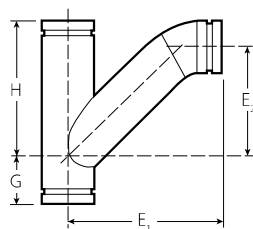
Flanged Adapter Nipple Coating: (specify choice)

- ☐ Standard: None (Unfinished)
- ☐ Optional: Orange enamel, hot dip galvanized and others

4.8 DIMENSIONS

Tee Wye

No. 32



No. 32

Size				No. 32 Tee Wye (sw)				Approx. Weight (Each)
Nominal inches DN				G inches mm	H inches mm	E ₁ inches mm	E ₂ inches mm	
2 DN50	x	2 DN50	x	2 DN50	2.75 70	7.00 178	9.00 229	4.63 118 6.4 2.9
2½	x	2½	x	2½	3.00 76	7.75 197	10.50 267	5.75 146 11.5 5.2
3 DN80	x	3 DN80	x	3 DN80	3.25 83	8.50 216	11.50 292	6.50 165 14.3 6.5
3½ DN90	x	3½ DN90	x	3½ DN90	3.25 89	10.00 254	13.00 330	7.75 197 22.9 10.4
4 100	x	4 DN100	x	4 DN100	3.75 95	10.50 267	13.63 346	8.13 207 26.0 11.8
5	x	5	x	5	4.00 102	12.50 318	16.13 410	10.00 254 48.0 21.8
6 DN150	x	6 DN150	x	6 DN150	4.50 114	14.00 356	18.25 464	11.50 292 60.5 27.4
8 DN200	x	8 DN200	x	8 DN200	6.00 152	18.00 457	23.25 591	15.25 387 127.1 57.7
10 DN250	x	10 DN250	x	10 DN250	6.50 165	20.50 521	27.25 692	18.00 457 190.0 86.2
12 DN300	x	12 DN300	x	12 DN300	7.00 178	23.00 584	31.00 787	20.50 521 240.0 108.9

(s) = Carbon Steel Direct Roll Groove (OGS)

(sw) = Carbon Steel Segmentally Welded

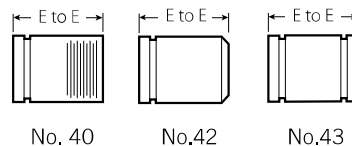
4.9 DIMENSIONS

Adapter Nipple

No. 40¹² Grv. x Thd.

No. 42 Grv. x Bev.

No. 43 Grv. x Grv.



No. 40

No. 42

No. 43

Size		No. 40, 42, 43 Adapter Nipple (s)	
Nominal inches DN	Actual Outside Diameter inches mm	E to E inches mm	Approx. Weight (Each) lb kg
¾ DN20	1.050 26.9	3.00 76	0.3 0.1
1 25	1.315 33.7	3.00 76	0.4 0.2
1 ¼ DN32	1.660 42.4	4.00 102	0.8 0.4
1 ½ 40	1.900 48.3	4.00 102	0.9 0.4
2 DN50	2.375 60.3	4.00 102	1.2 0.5
2 ½	2.875 73.0	4.00 102	1.9 0.9
3 DN80	3.500 88.9	4.00 102	2.5 1.1
3 ½ DN90	4.000 101.6	4.00 102	2.1 0.9
4 DN100	4.500 114.3	6.00 152	5.5 2.5
5	5.563 141.3	6.00 152	7.4 3.4
6 DN150	6.625 168.3	6.00 152	9.5 4.3
8 DN200	8.625 219.1	6.00 152	14.2 6.4
10 DN250	10.750 273.0	8.00 203	27.0 12.2
12 DN300	12.750 323.9	8.00 203	33.0 15.0

(s) = Carbon Steel Direct Roll Groove (OGS)

(sw) = Carbon Steel Segmentally Welded

NOTES

- All fittings are ductile iron unless otherwise noted with an (sw) or (s).
- For pump package nipples with 1 ½"/40mm hole cut to receive Style 923 Vic-Let or Style 924 Vic-O-Well request special No. 40, 42 or 43 nipples and specify No. 40-H, 42-H or 43-H on order. NOTE: 4 – 12"/DN100 – DN300 diameter — 8"/200mm minimum length required.
- For roll grooved systems, Victaulic offers the Advanced Groove System (AGS). For pricing and availability of cut groove fittings in this size, contact your nearest Victaulic sales representative.
- Available with British Standard Pipe Threads, specify "BSP" clearly on order.

User Responsibility for Product Selection and Suitability

Each user bears final responsibility for making a determination as to the suitability of Victaulic products for a particular end-use application, in accordance with industry standards and project specifications, and the applicable building codes and related regulations as well as Victaulic performance, maintenance, safety, and warning instructions. Nothing in this or any other document, nor any verbal recommendation, advice, or opinion from any Victaulic employee, shall be deemed to alter, vary, supersede, or waive any provision of Victaulic Company's standard conditions of sale, installation guide, or this disclaimer.

Intellectual Property Rights

No statement contained herein concerning a possible or suggested use of any material, product, service, or design is intended, or should be constructed, to grant any license under any patent or other intellectual property right of Victaulic or any of its subsidiaries or affiliates covering such use or design, or as a recommendation for the use of such material, product, service, or design in the infringement of any patent or other intellectual property right. The terms "Patented" or "Patent Pending" refer to design or utility patents or patent applications for articles and/or methods of use in the United States and/or other countries.

Note

This product shall be manufactured by Victaulic or to Victaulic specifications. All products to be installed in accordance with current Victaulic installation/assembly instructions. Victaulic reserves the right to change product specifications, designs and standard equipment without notice and without incurring obligations.

Installation

Reference should always be made to the Victaulic installation handbook or installation instructions of the product you are installing. Handbooks are included with each shipment of Victaulic products, providing complete installation and assembly data, and are available in PDF format on our website at www.victaulic.com.

Warranty

Refer to the Warranty section of the current Price List or contact Victaulic for details.

Trademarks

Victaulic and all other Victaulic marks are the trademarks or registered trademarks of Victaulic Company, and/or its affiliated entities, in the U.S. and/or other countries.