



No. 20 Tee



No. 10 Elbow

## Certifications/Listings



When supplied as “hot dip galvanized” the following fittings are UL Classified in accordance with ANSI/NSF 61 and for use on cold +86°F/+30°C potable water service and ANSI/NSF 372: No. 10 90° Elbow, No. 11 45° Elbow, No. 12 22 1/2° Elbow, No. 13 11 1/4° Elbow, No. 100 90° Long Radius Elbow, No. 110 45° Long Radius Elbow, No. 20 Tee, No. 25 Tee with Grooved Branch, No. 30 45° Lateral, No. 60 Cap, No. 50 Concentric Reducers, No. 51 Eccentric Reducers.

Note: The following Victaulic fittings are VdS approved: No.10 90° Elbow, No.11 45° Elbow, No.20 Tee and No.60 Cap.

Note: The following Victaulic fittings are LPCB approved: No.10 90° Elbow, No.11 45° Elbow, No.12 22 1/2° Elbow, No.13 11 1/4° Elbow, No.30 45° Lateral, No.30-R Reducing Lateral, No.100 Long Radius Elbow, No.110 Long Radius Elbow, No.20 Tee, No.35 Cross, No.60 Cap, No.25 Reducing Tee, No.33 True Wye, No.50 Concentric Reducer, No.51 Eccentric Reducer and No.29M Tee with Threaded Branch.

## Product Description

- Wide range of fittings from ¾ – 60"/20 – 1500 mm
- Fittings conform to the pressure ratings of the Style 77 coupling
- Fittings are provided with grooved or shouldered ends.

Note: These fittings are not intended for use with Victaulic plain end couplings.

- Fittings are intended for use in grooved piping systems only

Note: When connecting wafer or lug type butterfly valves directly to Victaulic fittings using Style 741 or 743 flange adapters, be sure to check disc clearance dimensions with I.D. dimension of fitting.

### Job/Owner

System No.	
Location	

### Contractor

Submitted By	
Date	

### Engineer

Spec Section	
Paragraph	
Approved	
Date	

## Material Specifications

---

### Fitting: (specify choice)

- Standard: Ductile iron conforming to ASTM A-536, Grade 65-45-12.
- Optional: Segmentally welded steel as shown under nipples

### Nipples: (specify choice)

- $\frac{3}{4}$  – 4"/20 – 100 mm: Carbon steel, Schedule 40, conforming to ASTM A-53, Type F
- 5 – 6"/125 – 150 mm: Carbon steel, Schedule 40, conforming to ASTM A-53, Type E or S, Gr. B
- 8 – 12"/200 – 300 mm: Carbon steel, Schedule 30 or 40, conforming to ASTM A-53, Type E or S, Gr. B

### Flanged Adapter Nipples: (specify choice)

- Class 125 Flange: Cast iron conforming to ANSI B-16.1
- Class 150 Flange: Carbon steel conforming to ANSI B-16.5, raised or flat face
- Class 300 Flange: Carbon steel conforming to ANSI B-16.5, raised or flat face

### Fitting Coating: (specify choice)

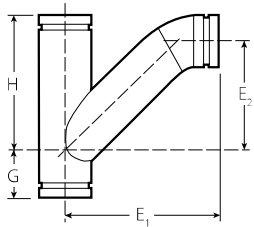
- Standard: Orange enamel.
- Optional: Hot dip galvanized and others. Some fittings supplied electroplated as standard – see product specifications.

### Flanged Adapter Nipple Coating: (specify choice)

- Standard: None (Unfinished)
- Optional: Orange enamel, hot dip galvanized and others.

**Tee Wye**

**No. 32**



No. 32

Size				No. 32 Tee Wye (sw)				Approx. Weight Each	
Nominal Size				G	H	E <sub>1</sub>	E <sub>2</sub>		
inches mm				inches mm	inches mm	inches mm	inches mm		
2	x	2	x	2	2.75	7.00	9.00	4.63	6.4
50	x	50	x	50	70	178	229	118	2.9
2½	x	2½	x	2½	3.00	7.75	10.50	5.75	11.5
65	x	65	x	65	76	197	267	146	5.2
3	x	3	x	3	3.25	8.50	11.50	6.50	14.3
80	x	80	x	80	83	216	292	165	6.5
3½	x	3½	x	3½	3.25	10.00	13.00	7.75	22.9
90	x	90	x	90	89	254	330	197	10.4
4	x	4	x	4	3.75	10.50	13.63	8.13	26.0
100	x	100	x	100	95	267	346	207	11.8
5	x	5	x	5	4.00	12.50	16.13	10.00	48.0
125	x	125	x	125	102	318	410	254	21.8
6	x	6	x	6	4.50	14.00	18.25	11.50	60.5
150	x	150	x	150	114	356	464	292	27.4
8	x	8	x	8	6.00	18.00	23.25	15.25	127.1
200	x	200	x	200	152	457	591	387	57.7
10	x	10	x	10	6.50	20.50	27.25	18.00	190.0
250	x	250	x	250	165	521	692	457	86.2
12	x	12	x	12	7.00	23.00	31.00	20.50	240.0
300	x	300	x	300	178	584	787	521	108.9

**General Notes**

Note: All fittings are ductile iron unless otherwise noted with an (sw) or (s).

(s) = Carbon Steel Direct Roll Groove (OGS)

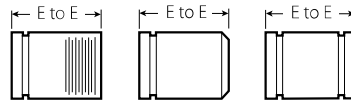
(sw) = Carbon Steel Segmentally Welded

**Adapter Nipple**

**No. 40** 12 Grv. x Thd.

**No. 42** Grv. x Bev.

**No. 43** Grv. x Grv.



No. 40

No. 42

No. 43

Size		No. 40, 42, 43 Adapter Nipple (s)	
Nominal Size	Actual Outside Diameter	E to E	Approx. Weight Each
inches mm	inches mm	inches mm	inches mm
¾	1.050	3.00	0.3
20	26.9	76	0.1
1	1.315	3.00	0.4
25	33.7	76	0.2
1¼	1.660	4.00	0.8
32	42.4	102	0.4
1½	1.900	4.00	0.9
40	48.3	102	0.4
2	2.375	4.00	1.2
50	60.3	102	0.5
2½	2.875	4.00	1.9
65	73.0	102	0.9
3	3.500	4.00	2.5
80	88.9	102	1.1
3½	4.000	4.00	2.1
90	101.6	102	0.9
4	4.500	6.00	5.5
100	114.3	152	2.5
5	5.563	6.00	7.4
125	141.3	152	3.4
6	6.625	6.00	9.5
150	168.3	152	4.3
8	8.625	6.00	14.2
200	219.1	152	6.4
10	10.750	8.00	27.0
250	273.0	203	12.2
12	12.750	8.00	33.0
300	323.9	203	15.0

12 Available with British Standard Pipe Threads, specify "BSP" clearly on order.

**General Notes**

For pump package nipples with 1 ½ "/40 mm hole cut to receive Style 923 Vic-Let or Style 924 Vic-O-Well® request special No. 40, 42 or 43 nipples and specify No. 40-H, 42-H or 43-H on order. NOTE: 4 – 12"/100 – 300 mm diameter — 8"/200 mm minimum length required.

For roll grooved systems, Victaulic offers the Advanced Groove System (AGS). For pricing and availability of cut groove fittings in this size, contact your nearest Victaulic sales representative.

Note: All fittings are ductile iron unless otherwise noted with an (sw) or (s).

(s) = Carbon Steel Direct Roll Groove (OGS)

(sw) = Carbon Steel Segmentally Welded