

BOULEVARD PEDESTAL SINK

- Vitreous china
- Classic styled rectangular pedestal lavatory
- Rear overflow
- Supplied with mounting kit
- Right Height™ for greater comfort during use
- Faucet ledge with large deck area (faucet not included)
- **Design coordinates with Studio Cadet®3 Toilet**
- Basin has flat bottom to also allow use as an **above counter sink** or a **countertop sink** (with u-shaped cut out)

- 0641.800** Faucet holes on 203mm (8") centers (Illustrated)
- 0641.400** Faucet holes on 102mm (4") centers
- 0641.100** Center hole only

Nominal Dimensions:

610 x 483 x 902mm
(24" x 19" x 35-1/2")

- 0641.008** Lavatory slab-203mm (8") centers
- 0641.004** Lavatory slab-102mm (4") centers
- 0641.001** Lavatory slab-center hole only
- 0010.000** Pedestal only

Bowl sizes:

432mm (17") wide,
318mm (12-1/2") front to back,
127mm (5") deep

Compliance Certifications -

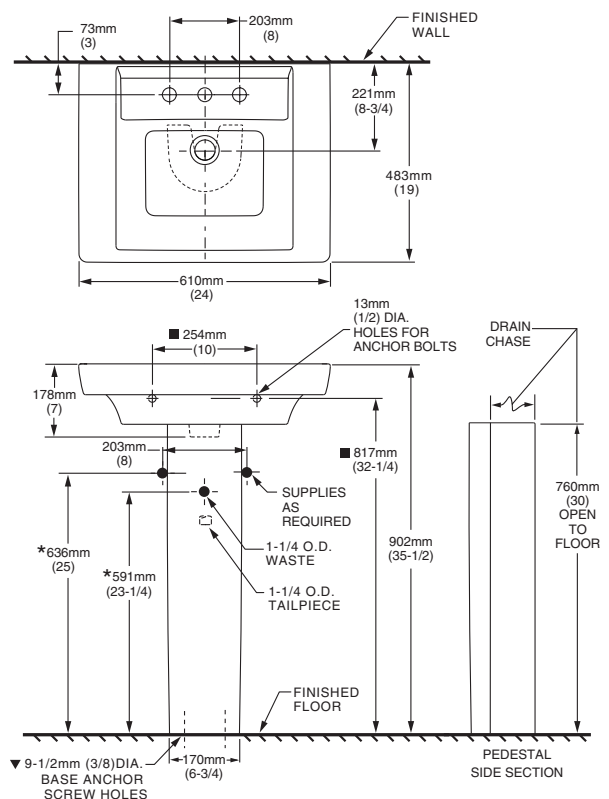
Meets or Exceeds the Following Specifications:

- ASME A112.19.2 - 2008/CSA B45.1-08

To Be Specified:

- Color: White Bone Linen Black
- Faucet Finish:
- Supplies:
- 1-1/4" Trap:
- Nipple:

* See faucet section for additional models available



NOTES:

- * DIMENSIONS SHOWN FOR LOCATION OF SUPPLIES AND "P" TRAPS ARE SUGGESTED.
- ▼ PEDESTAL ANCHORING SCREWS NOT INCLUDED.
- SUITABLE FOR REINFORCEMENT ONLY. ACTUAL DIMENSIONS MUST BE TAKEN FROM FIXTURE.
- FITTING NOT INCLUDED AND MUST BE ORDERED SEPARATELY.
- PROVIDE SUITABLE REINFORCEMENT FOR ALL WALL SUPPORTS.
- INSTALLATION INSTRUCTIONS SUPPLIED WITH LAVATORY.

IMPORTANT: Dimensions of fixtures are nominal and may vary within the range of tolerance established by ANSI Standard A112.19.2. These measurements are subject to change or cancellation. No responsibility is assumed for use of superseded or voided pages.