**GENERAL DESCRIPTION:**

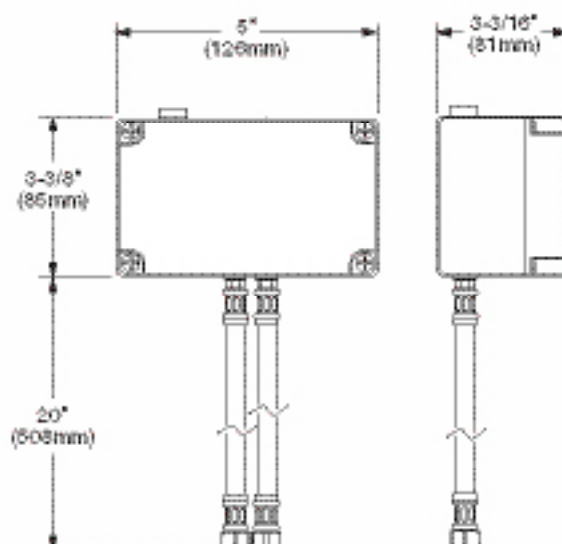
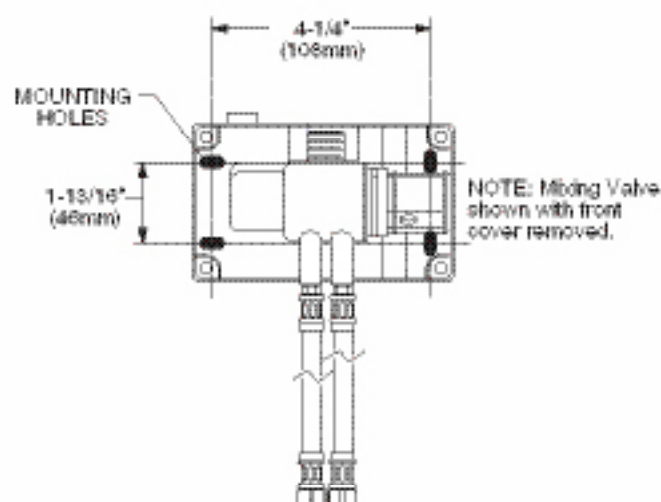
Below deck thermostatic water mixing valve to be used with Selectronic™ faucets. Adjustable temperature by using a 4mm Hex Wrench. To decrease temperature, rotate clockwise. To increase temperature, rotate counter-clockwise.

**PRODUCT FEATURES:**

- 3/8" Stainless steel compression flex hoses, 20" length included
- Meets ASSE1016
- Anti-scald protection
- NSF 61/Section 9

**MODEL NUMBER:**

- ☐ 605XTMV Recommended to be used with Selectronic™ faucets that are specified with the "TMV" (Thermostatic Mixing Valve) variation, or available separately.

**RECOMMENDED SPECIFICATION**

The Mixing Valve shall be of thermostatic type. Shall also meet ASSE 1016 performance and anti-scald requirements at 0.50 GPM. Fitting shall be American Standard Model # 605XTMV.