

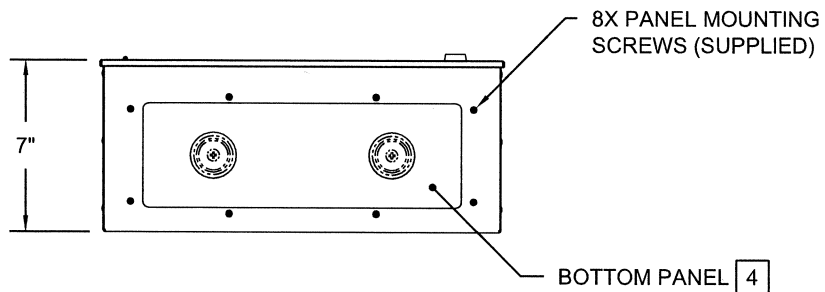
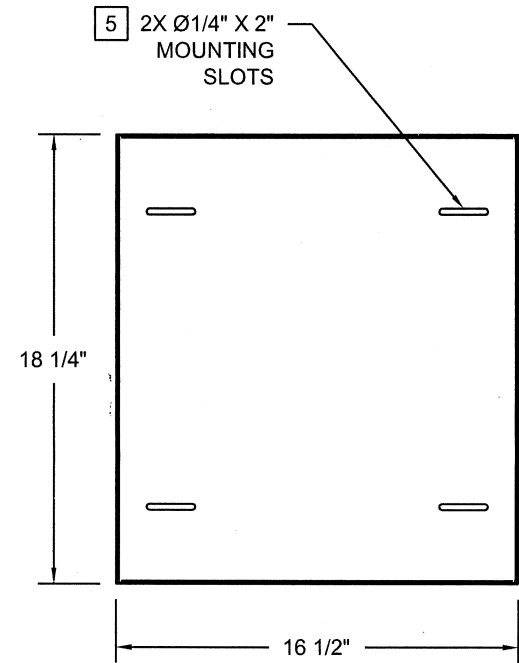
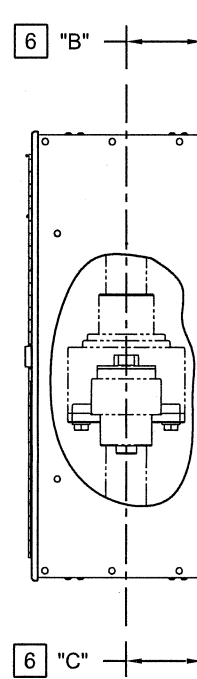
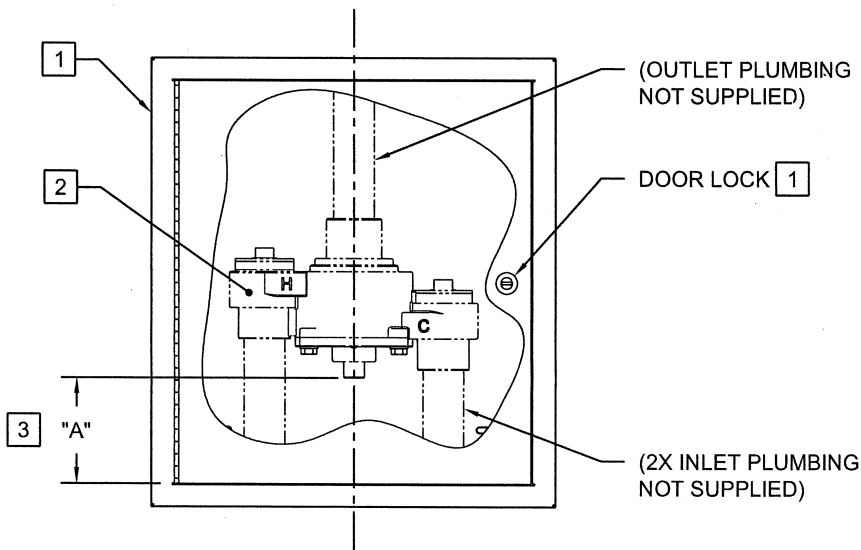
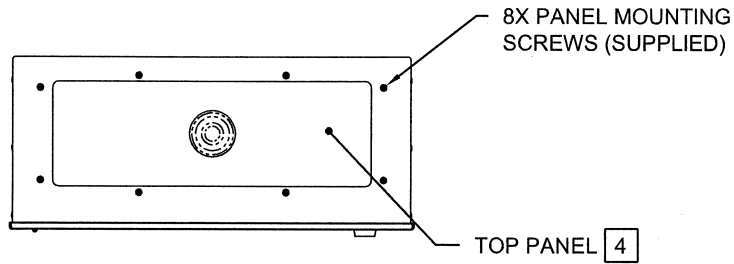
9200SUR CABINET INSTALLATION

- 1 SUGGESTED ORIENTATION: CABINET PANEL OPENINGS AND VALVE PORTS ALIGNED VERTICALLY WITH DOOR LOCK POSITIONED ON RIGHT SIDE.
- 2 9202E VALVE SHOWN AS EXAMPLE ONLY. VALVE USED DETERMINES PANEL KIT SELECTION. SEE PANEL KIT / VALVE TABLE TO MATCH PANELS TO VALVE.
- 3 "A" DIMENSION = SUGGESTED CLEARANCE TO ALLOW ACCESS TO TEMPERATURE ADJUSTMENT SCREW. SEE PANEL KIT / VALVE TABLE FOR DIMENSIONING.
- 4 TOP & BOTTOM PANELS SHOWN AS EXAMPLE ONLY. MATCH PANELS TO PORTS ON VALVES. FOR ORIENTATION OF VALVES AND ALIGNMENT OF PANELS. GO TO WWW.HAWSCO.COM AND SEE THE INSTALLATION, OPERATION & MAINTENANCE INSTRUCTIONS FOR EACH VALVE. FOR TECHNICAL SUPPORT, CALL 1-800-766-5612.
- 5 MOUNT CABINET TO WALL FROM INSIDE OF CABINET. (MOUNTING HARDWARE NOT SUPPLIED)
- 6 "B" AND "C" DIMENSIONS = DISTANCE FROM WALL SURFACE TO CENTER OF CLOSEST VALVE PORT AND PANEL CLEARANCE HOLE.

PANEL KIT / VALVE TABLE				
VALVE USED	PANEL KIT USED	"A" DIM. ±1/2"	"B" DIM. ±1/8"	"C" DIM. ±1/8"
TWBS.HF	PKHF	3 1/2"	2 3/8"	NA
TWBS.SHE	PKSHE	4"	3 1/8"	NA
TWBS.EWE	PKEWE	4"	3 1/8"	NA
9201E	PK01E	4"	3 1/8"	3 1/8"
9201EFE	PK01EFE	4"	3 1/8"	NA
9201H	PK01H	4"	2 1/16"	NA
9202E	PK02E	4"	3 1/8"	3 1/8"

2
 2
 3
 6
 6

		1455 KLEPPE LANE SPARKS, NEVADA 89431 (775) 359-4712 FAX (755) 359-7424 E-MAIL: HAWS@HAWSCO.COM WEBSITE: WWW.HAWSCO.COM	
		ECN NO. 4722 REVISED PER: BY: MODEL(S) ECN: DATE: 12/8/11 CHG:	9200SUR CABINET, SURFACE-MOUNT
APPROVED: <i>[Signature]</i> DATE:	SCALE: 1/8" DRAWING TYPE: INSTALLATION	SIZE: A	SHEET 1 OF 2



		1455 KLEPPE LANE SPARKS, NEVADA 89431 (775) 359-4712 FAX (775) 359-7424 E-MAIL: HAWS@HAWS.CO.COM WEBSITE: WWW.HAWS.CO.COM	
		ECN NO. 4722 REVISED PER BY: ECN:	MODEL(S) 9200SUR CABINET, SURFACE-MOUNT
DRAWN: VWG APPROVED: [Signature]	DATE: 12/8/11	CHECKED: [Signature]	DRAWING NO. 16161A REV 1
SCALE: 1/8		DRAWING TYPE: INSTALLATION	SIZE: A SHEET 2 OF 2