



model MTGFR.17

Mounting Frame

FEATURES & BENEFITS

CONSTRUCTION

Constructed of heavy gauge galvanized steel, this frame provides the needed support for Haws 'Hi-Lo' drinking fountains along with added corrosion resistance for long life.

MOUNTING

Normally mounted in advance, this frame allows for precise mounting and superior finish when aesthetics is a must.

OPTIONS

For more information, visit www.hawscos.com or call (888) 640-4297.



SPECIFICATIONS

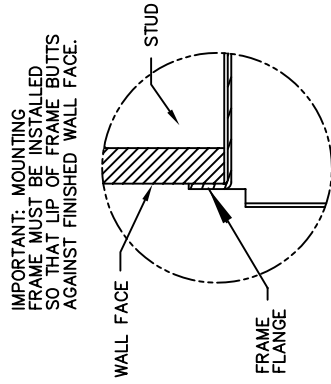
Model MTGFR.17 mounting frame is made of heavy gauge galvanized steel with pre-punched mounting holes for use with Haws H1117.8.

APPLICATIONS

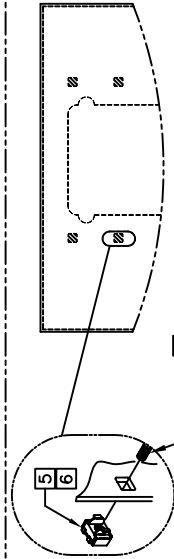
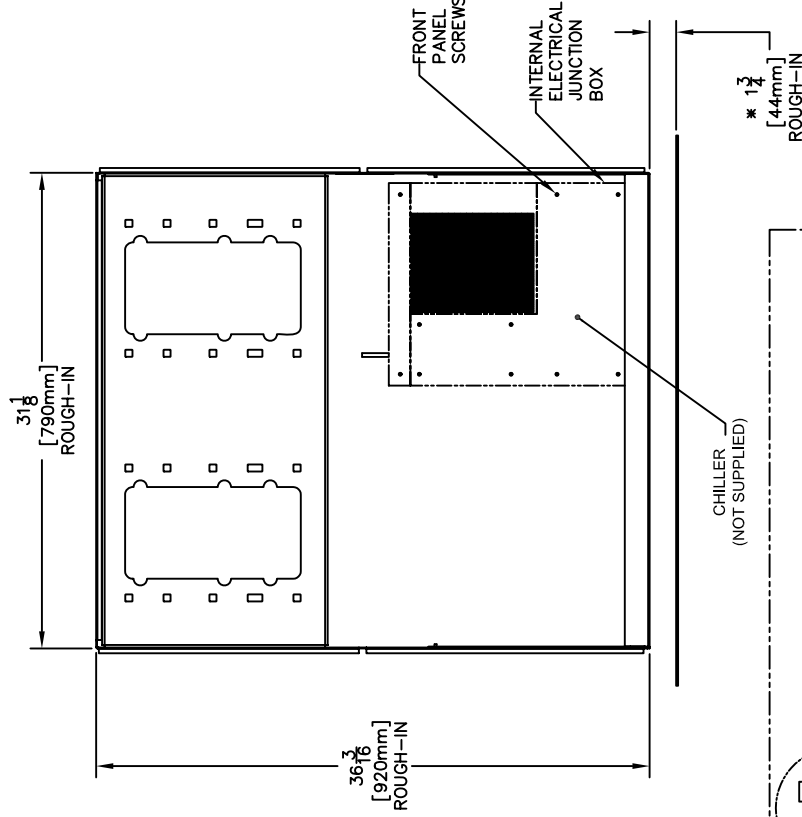
Haws produces mounting plates and frames to assist in the installation process as well as to provide a solid base for the wall mounted designed fountains. Mounting plates and frames meet the requirements solely for the specified applicable fountains and are not designed to be used in the installation of any unspecified fountain.

MOUNTING FRAME INSTALLATION:

1. HOLD ROUGH-IN DIMENSIONS $\pm 1/8"$ (3.2mm).
2. THIS FRAME WILL ACCOMMODATE SEVERAL DIFFERENT BOWL MOUNTING HEIGHTS. SEE MODEL H117.8 INSTALLATION DRAWING (SHT. 2 OF 2) RECEIVED WITH THE FOUNTAIN FOR PROPER LOCATIONS OF 5/16"-18 PANEL NUT RETAINERS. WASTE AND SUPPLY HEIGHTS ARE ALSO DETAILED ON MODEL H117.8 INSTALLATION DRAWING (SHT. 1 OF 2).
3. WHEN INSTALLING THIS UNIT, LOCAL, STATE OR FEDERAL CODES SHOULD BE ADHERED TO. FOR DIFFERENT INSTALLATION HEIGHTS OTHER THAN SHOWN, DIMENSIONS MARKED (*) MUST BE ADJUSTED ACCORDINGLY.
4. ALIGN HOLES IN CHILLER SUPPORT TRAY WITH HOLES IN FRAME AND FASTEN IN PLACE WITH #10 SHEET-METAL SCREWS SUPPLIED WITH UNIT.
5. INSERT 5/16"-18 PANEL NUT RETAINERS (SUPPLIED WITH FOUNTAIN) FROM OPPOSITE SIDE OF OPENINGS (SHOWN BY DARKENED HOLES). HOLE COMBINATION SHOWN (INSET) IS FOR REF. ONLY.
6. TO CHANGE FOUNTAIN MTG. SCREW LOCATIONS, FIRST REMOVE SCREWS AND THEN SQUEEZE CLIPS ON NUT RETAINER TO POP OUT (SUPPLIED WITH FOUNTAIN). SNAP INTO NEW POSITIONS AND RE-ASSEMBLE SCREWS.



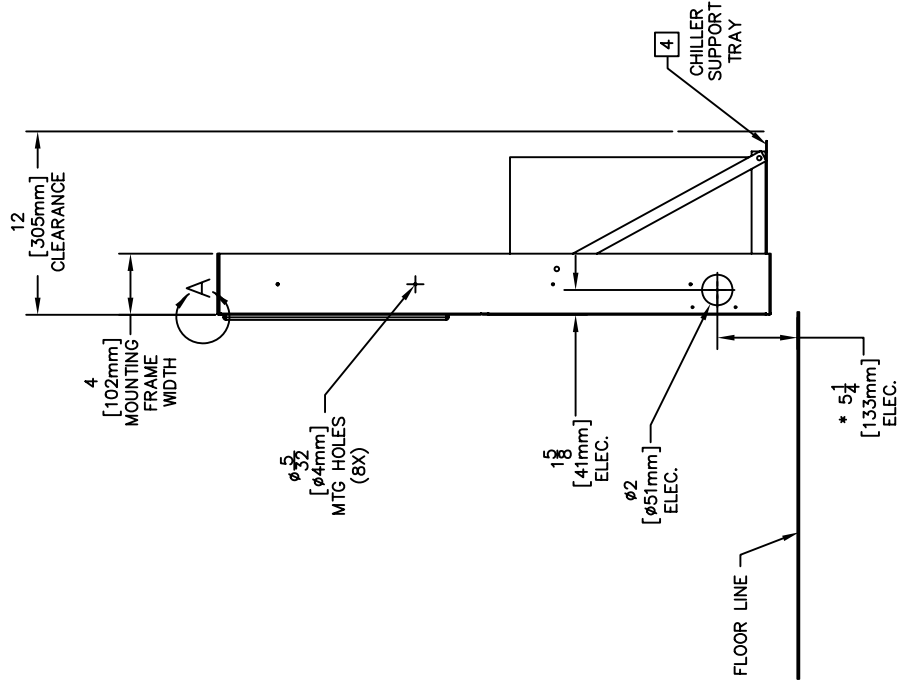
DETAIL A



BOWL MOUNTING DETAIL

CHILLER ELECTRICAL INSTALLATION:

1. ENSURE ELECTRICAL POWER IS OFF AND POWER MATCHES VOLTAGE, PHASE AND CYCLE LISTED ON CHILLER LABEL
2. REMOVE FRONT PANEL TO GAIN ACCESS TO INTERNAL JUNCTION BOX.
3. HARDWIRE CHILLER THROUGH ITS SIDE. WIRE IN ACCORDANCE WITH LOCAL, STATE AND FEDERAL CODES.
4. REPLACE FRONT PANEL. DO NOT APPLY POWER UNTIL UNIT WATER SUPPLY IS CONNECTED AND ON.



INFO FAX : 1-888-FAX-HAWS (1-888-329-4297)
1455 Kleppe Ln, Sparks NV, 89431
Phone: 775-359-4712 Fax: 775-359-7424
Haws Ag Bodensee 3 CH-3401 Burgdorf Switzerland
Haws Mtg Pte Ltd 74 Sungai Kadut Loop Singapore 729531
e-mail: Haws@hawsco.com website: www.hawsco.com

MODEL(S):
3885 ECN-4181 VMC
DATE: 01-06
DRAWN: C.FENNER
APPROVED: DATE: 01-06
INFO FAX: 26843717
SCALE: 1:1
DRAWING TYPE: INSTALLATION/FABRICATION
SHEET: 1 OF 1

0002080015
HAWSCORP
15275A00