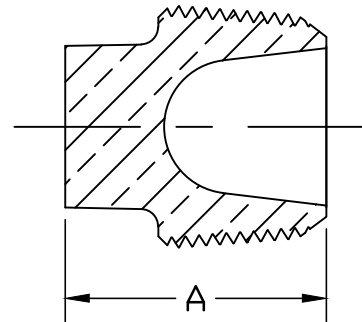
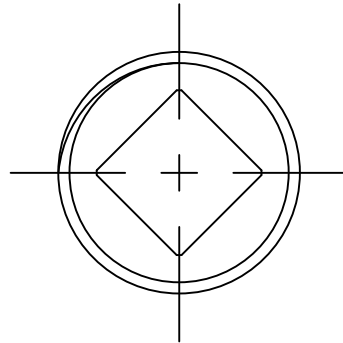



PART NUMBER
H10033N

44²-MRKTG

SIZE	A
1/2"	1.12
5/8"	1.31
3/4"	1.36
1"	1.38
1-1/4"	1.44
1-1/2"	1.50
2"	1.56



FILEPATH: PRDD-ENG\MUELLER\ASYSUBMITTALS\H10033N

						DRFTR	RWB	11/6/12			
						CHKR					
						ENGR					
						MGR					
							BY	DATE	UNLESS OTHERWISE NOTED SURFACE PREPARATION: BREAK CORNER(S) ---- .000 SURFACE FINISH -- XX RMS TOLERANCE(S): LINEAR ----- ± .000 ANGULAR ----- ± 0°00'		
						STK No:			THIRD ANGLE PROJECTION		
						MAT'L:			REF. No.		
						DESCR.			SCALE		
REV	ECR	DESCRIPTION	DATE	BY	CHKR	LLB CC THR'D SQUARE PLUG				FULL	
PER EST NO: DXXXX EST FIN WT = 0.0000 lbs										PART NUMBER H10033N	

April 28, 2017

Subject: Mueller Co. Service Brass

To Whom It May Concern:

This will certify that Mueller Co. service brass, which includes corporation stops, curb stops, service fittings, meter valves, copper meter yokes and end connections, are manufactured and tested in accordance with the latest revision of AWWA C800 standard and are certified to NSF 61.

Components that come in contact with potable water comply with the latest requirements of the U.S. Federal Safe Drinking Water Act that was enacted on January 4, 2014.

Sincerely,



Larry Aulich
Senior Product Manager
Mueller Company