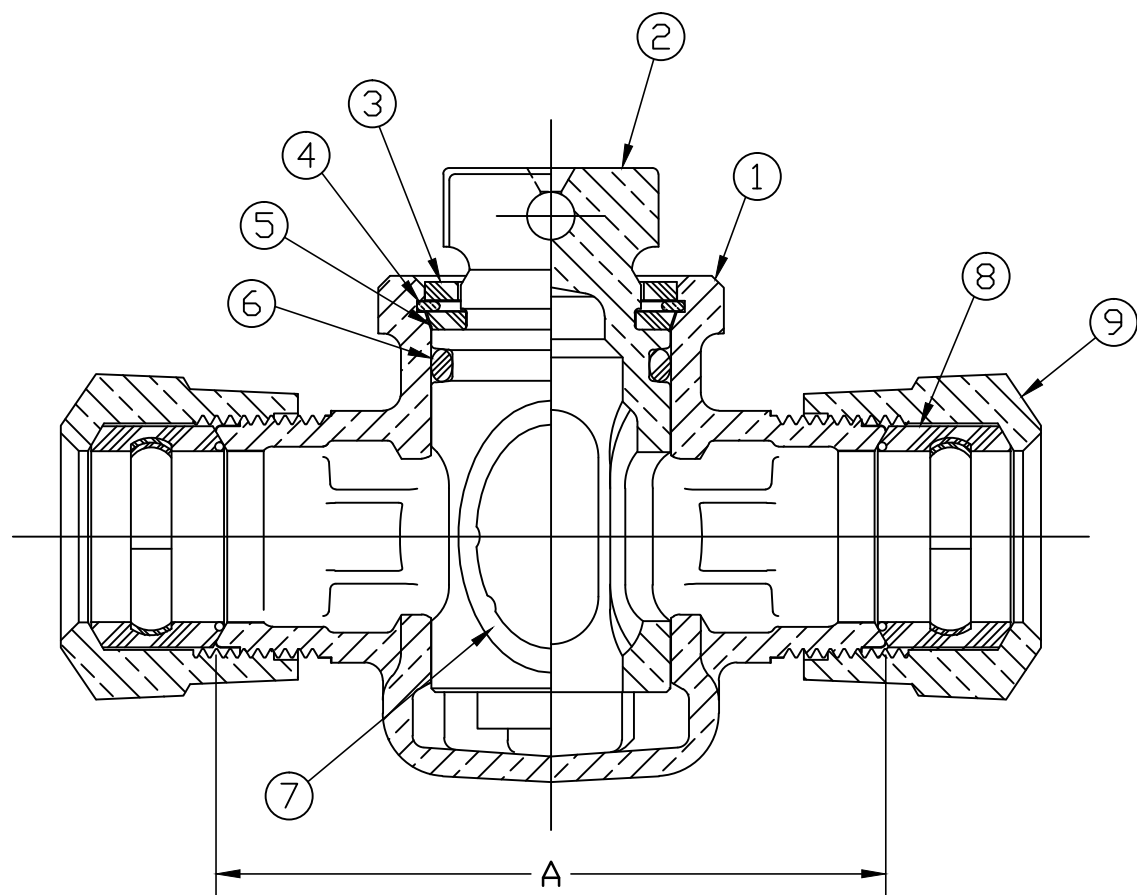


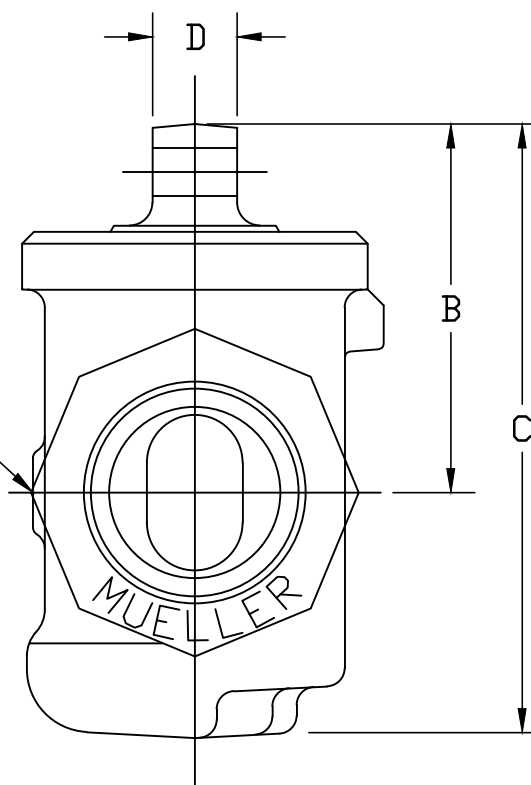
SIZE	A	B	C	D
1/2	4.22	2.11	3.41	.44
5/8	4.25	2.11	3.45	.44
3/4	3.49	1.92	3.17	.44
1	4.75	2.44	4.00	.44
1-1/4	7.90	2.64	4.38	.53
1-1/2	6.31	3.42	5.52	.53
2	6.03	3.70	6.05	.56

LUBE PER MUELLER ESP E-95 }

No.	QTY.	DESCRIPTION	MATERIAL
1	1	BODY	LOW LEAD BRASS ALLOY
2	1	KEY	LOW LEAD BRASS ALLOY
3	1	TOP SEAL	RUBBER, MUELLER RUBBER CODE R8
4	1	RETAINING RING	BRONZE ASTM B103 ALLOY C52100
5	1	THRUST WASHER	CELCON GRADE M90 CF2001
6	1	TOP O-RING	RUBBER, ASTM D-2000 (EPDM
7	1	PORT O-RING	RUBBER, ASTM D-2000 (EPDM
8	2	CTS GSKT SUB	SBR D2000 - GSKT 410SS - BAND
9	2	CONN. NUT	CAST BRASS ASTM B62 ALLOY C83600



DRAIN HOLE ON H-15219N ONLY



NOTE: ALL WETTED PARTS ARE LOW LEAD BRASS ALLOY

FILEPATH: PROD-ENG\MUELLER\APPROVED\H15209N

						DRFTR	RWB	9/5/12	Mueller Co.	UNLESS OTHERWISE NOTED THIRD ANGLE PROJECTION SURFACE PREPARATION: BREAK CORNER(S) ----- .000 SURFACE FINISH -- XX RMS TOLERANCE(S): LINEAR ----- ± .016 ANGULAR ----- ± 0°30'	REF. No.	SCALE FULL
						CHKR						
						ENGR						
						MGR						
								BY	DATE			
								STK No:				
								MAT'L:				
								DESCR.	H-15209N & H-15219N		PART NUMBER	
									MARK II DRISEAL LLB ASSEMBLY (PHASE III)		H15209N	
								PER EST NO: DXXXX EST FIN WT = 0.0000 lbs				

TITLE TO AND OWNERSHIP OF THIS ENGINEERING DATA REMAINS IN Mueller Co. NO USE IS TO BE MADE OF THIS DATA EXCEPT AS SPECIFICALLY AUTHORIZED BY Mueller Co. ASSENT ON THE PART OF THE RECIPIENT TO THESE CONDITIONS IS PRESUMED

WAS EXP NO:

PART NUMBER
H15209N

80-MRKT