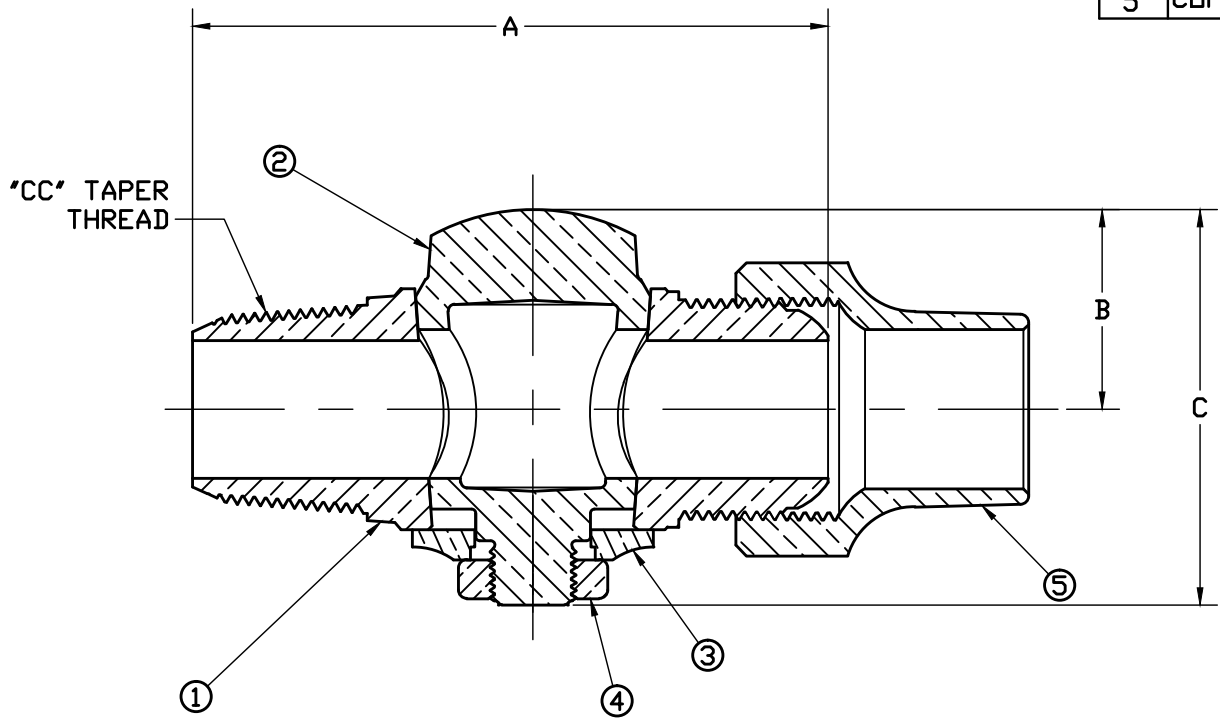


No.	DESCRIPTION	MATERIAL
1	BODY	CAST LOW LEAD BRASS ALLOY
2	KEY	CAST LOW LEAD BRASS ALLOY
3	KEY WASHER	CAST BRASS ASTM B62 ALLOY C83600
4	KEY NUT	CAST BRASS ASTM B62 ALLOY C83600
5	COPPER TUBE NUT	CAST BRASS ASTM B62 ALLOY C83600



SIZE	A	B	C
1/2	3.45	1.14	2.30
5/8	3.53	1.20	2.50
5/8x3/4	3.50	1.20	2.50
3/4	3.84	1.30	2.68
3/4 x 1	4.02	1.30	2.68
1	4.61	1.41	2.87
1 1/4	5.55	1.80	3.80
1 1/2	6.36	2.16	4.84
1 1/2 x 2	6.64	2.16	4.84
2	7.53	2.36	4.83

NOTE: ALL WETTED PARTS ARE LOW LEAD BRASS ALLOY

FILEPATH: PRODD-ENG\MUELLER\ASYSUBMITTALS\H15000N

						DRFTRJGarvin 2/12/10	Mueller Co.		UNLESS OTHERWISE NOTED SURFACE PREPARATION: BREAK CORNER(S) ---- .000 SURFACE FINISH -- XX RMS TOLERANCE(S): LINEAR ----- ± .000 ANGULAR ----- ± 0°00'		THIRD ANGLE PROJECTION 			
						CHKR							BY	DATE
						ENGR								
						MGR								
						STK No:			REF. No.	SCALE				
						MAT'L:				FULL				
REV	ECR	DESCRIPTION	DATE	BY	CHKR	DESCR. CORPORATION STOP				PART NUMBER				
PER	EST NO:	DXXXX	EST FIN	WT =	0.0000	LOW LEAD BRASS ('CC' TAPER x CS)				H15000N				

PART NUMBER
H15000N
442-MRKTG

April 28, 2017

Subject: Mueller Co. Service Brass

To Whom It May Concern:

This will certify that Mueller Co. service brass, which includes corporation stops, curb stops, service fittings, meter valves, copper meter yokes and end connections, are manufactured and tested in accordance with the latest revision of AWWA C800 standard and are certified to NSF 61.

Components that come in contact with potable water comply with the latest requirements of the U.S. Federal Safe Drinking Water Act that was enacted on January 4, 2014.

Sincerely,



Larry Aulich
Senior Product Manager
Mueller Company