



**Lochinvar®**  
High Efficiency Water Heaters, Boilers and Pool Heaters

## PUMP Recommendation

**PUMP-Rec-18 Rev A**

### PUMP RECOMMENDATION FOR ARMOR 1000 WATER HEATER

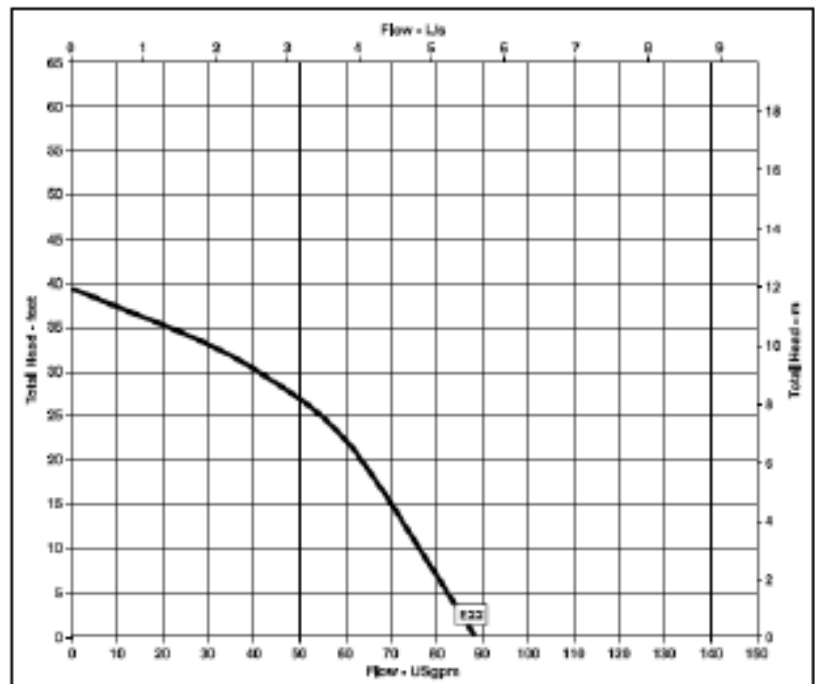
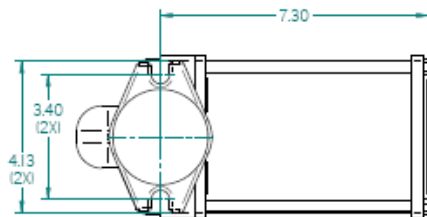
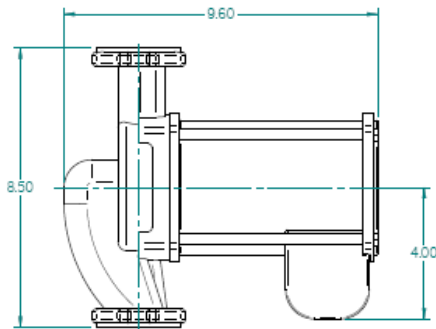
#### Pump Specifications

Part No.	HorsePower	Flanges	Valute Material	Flange Material	Vendor	Vendor Product Series	Orientation
PUM30003	2/5	2"	Bronze	Bronze	Armstrong	E Series	Vertical

#### Installation Specifications

Pump	Recommended for Model Numbers	Minimum GPM	Based on Installation Type
PUM30003	Armor Wtr Htr, AW(N,L) 1000	2 pumps - 50 GPM each	Single Water Heater piped to Single Storage Tank
	<b>Based on Minimum Pipe Diameter</b>	<b>Based on Connecting piping</b>	
	2"	Maximum 45 feet straight pipe with 4-Elbows, 2-Unions and 2-Ball Valves	

IMPORTANT: Read the Armor 1000-1500 Installation and Operation Manual. If the planned system exceeds the pump capacity in flow and/or head see "Pump-Curves-All Pumps" for alternate pumps and pump curves.



**Lochinvar®**  
High Efficiency Water Heaters, Boilers and Pool Heaters

Lochinvar Corporation • 300 Maddox Simpson Pkwy • Lebanon, TN 37090 • 615-889-8900/Fax: 615-547-1000

[www.Lochinvar.com](http://www.Lochinvar.com)



**Lochinvar®**  
High Efficiency Water Heaters, Boilers and Pool Heaters

## PUMP Recommendation

PUMP-Rec-18 Rev A

### PUMP RECOMMENDATION FOR ARMOR 1300-1500 WATER HEATER

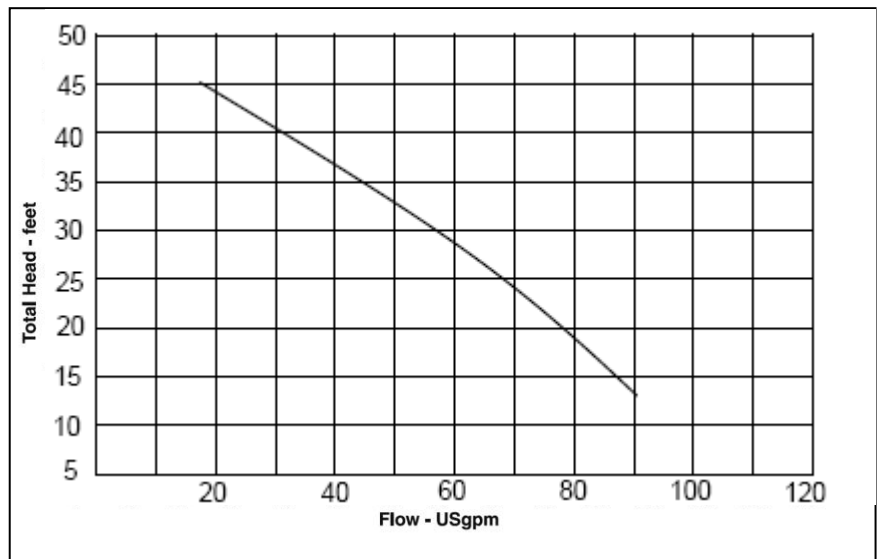
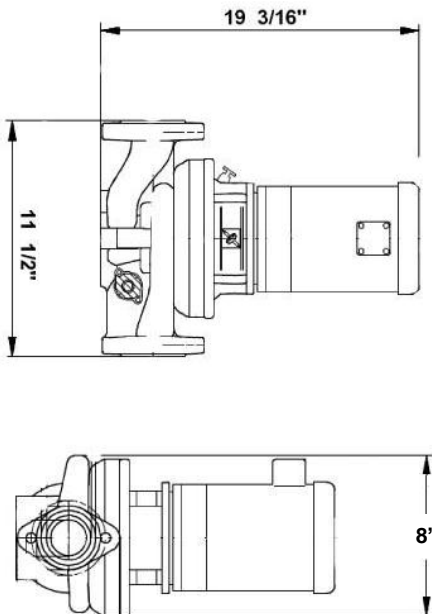
#### Pump Specifications

Part No.	HorsePower	Flanges	Valute Material	Flange Material	Vendor	Vendor Product Series	Orientation
PUM30004	3/4	2"	Bronze	Bronze	Armstrong	E Series	Vertical

#### Installation Specifications

Pump	Recommended for Model Numbers	Minimum GPM	Based on Installation Type
PUM30004	Armor Wtr Htr, AW(N,L) 1300-1500	2 pumps / 63 or 70 GPM each	Single Water Heater piped to Single Storage Tank
	<b>Based on Minimum Pipe Diameter</b>	<b>Based on Connecting piping</b>	
	2"	Maximum 45 feet straight pipe with 4-Elbows, 2-Unions and 2-Ball Valves	

IMPORTANT: Read the Armor 1000-1500 Installation and Operation Manual. If the planned system exceeds the pump capacity in flow and/or head see "Pump-Curves-All Pumps" for alternate pumps and pump curves.



**Lochinvar®**  
High Efficiency Water Heaters, Boilers and Pool Heaters

Lochinvar Corporation • 300 Maddox Simpson Pkwy • Lebanon, TN 37090 • 615-889-8900/Fax: 615-547-1000

[www.Lochinvar.com](http://www.Lochinvar.com)