

MINI-ROOTER XP

Parts List and Diagram

CAT. NO.	DESCRIPTION	CAT. NO.	DESCRIPTION
XP-100-1	Complete Frame Assembly	XP-205	Fiber Washer
XP-100-2	Complete Frame Assembly	XP-206	Front Hub w/Bushing
XP-101-1	Frame Only	XP-206-A	Front Hub Bushing
XP-101-2	Frame Only	XP-207	Round Head Cap Screws and Washers (4)
XP-102-1	Rubber Leg Tip (2)	XP-210	Drum Connecting Cable
XP-103	Rubber Foot, Washer and Nut (2)	XP-210-A	Connecting Cable Bolt, Nut and Washer
XP-104	Drum Shaft Retaining Pin	XP-300	Motor 1/3 hp with GFI, Air Foot Switch & Reverse Switch
XP-104-A	Retaining Pin Spring	XP-302	Belt Guard Retaining Knob
XP-104-B	Retaining Pin Collar with Set Screw	XP-303	V-Belt Pulley
XP-105	Shaft Spacer w/Set Screw	XP-303-1	Safety Slip Clutch
XP-106	Handle Locking Knobs (2)	XP-304	Motor Support w/Nuts, Bolts & Washers
XP-107	Folding Handle	XP-304-A	Nuts, Bolts & Washers
XP-107-1	Folding Handle	XP-304-B	Guide Screws (2)
XP-108	Rubber Tip (2)	XP-305	Motor Support Spring
XP-110	8" Wheel	XP-306	V-Belt (45")
XP-111	Wheel Retaining Cap (2)	XP-307	Belt Guard
XP-112	Wheel Spacer (4)	XP-308	Air Switch & Reverse Switch Assembly
XP-115	Front Post	XP-308-A	Box Only w/Cover & Screws
XP-116	Post Locking Knob	XP-308-B	Foot Pedal and Hose
XP-117	Post Support Bracket	XP-308-C	Cable Tie
XP-200	Complete Drum Assembly w/ Inner Drum (Enclosed)	XP-308-D	Foot Pedal Only
XP-200-O	Complete Cage Assembly with Inner Drum (Open)	XP-308-E	Power Switch Diaphragm
XP-201	Drum Shell	XP-308-F	Air Hose Only
XP-201-A	Edging	XP-308-G	Reverse Switch (3-Way)
XP-202	Drum Shaft	XP-308-H	Rubber Switch Boot
XP-202-A	Front Shaft Retaining Ring	XP-308-J	Barbed Adapter
XP-202-B	Flat Washer	XP-308-N	Strain Relief Nut
XP-202-C	Felt Washer	XP-309	Motor Guard w/Nylon Strip
XP-202-D	Rear Shaft Retaining Ring	XP-309-A	Nylon Strip
XP-203	Rear Hub Assembly w/Bushing	XP-GFI	Ground Fault Interrupter with 10 ft. Cord.
XP-203-A	Hub Bushing	PO-XP	XP Power Cable Feed
XP-203-B	Screws and Flanged Locknuts (5)	PO-MR	Mini-Rooter Power Cable Feed
XP-204	Distributor Tube and Inner Drum Assembly	MR-GT	Guide Tube

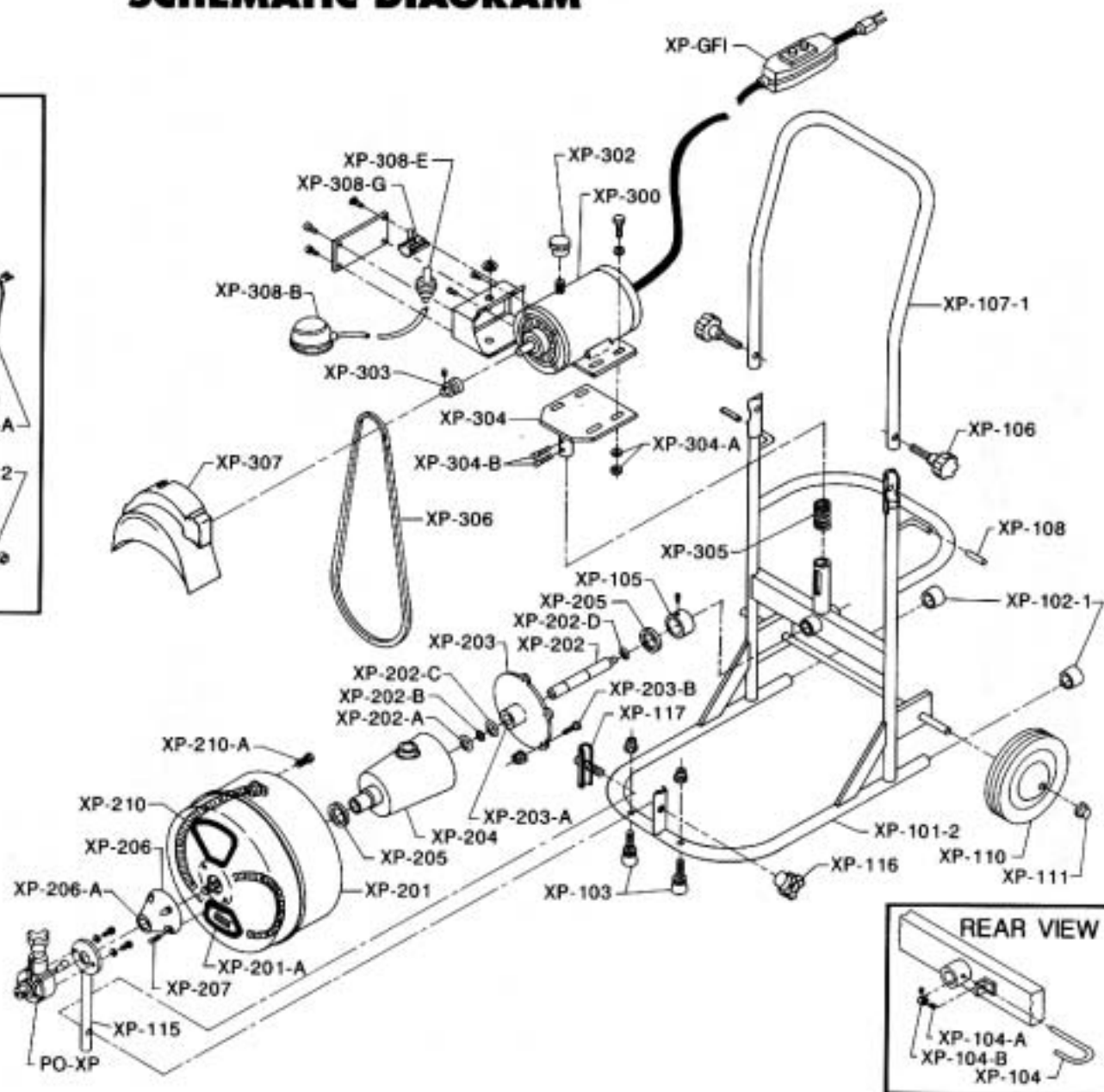
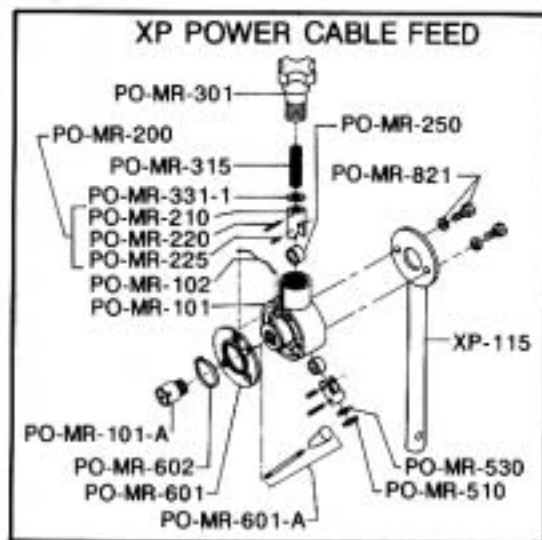
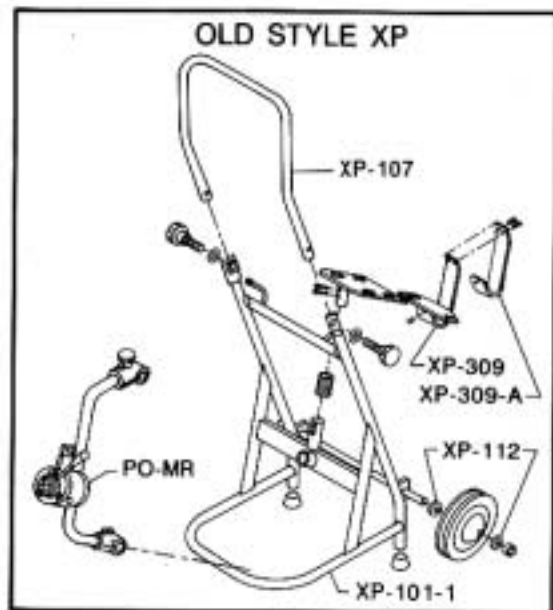
General Wire Spring Co.

1101 Thompson Avenue

412/771-6300

McKees Rocks, PA 15136 U.S.A.

MINI-ROOTER XP SCHEMATIC DIAGRAM



IMPORTANT: When ordering, give Serial Number of Machine.