


For Residential and Commercial Applications

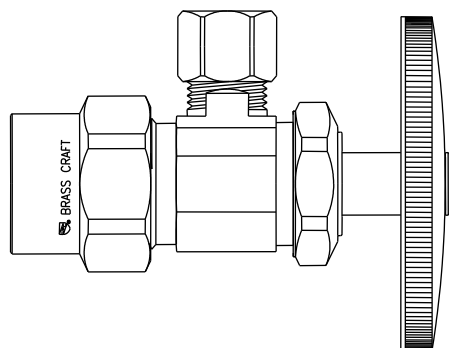
Job Name		Engineer / Architect	
Job Location		Wholesaler	
Submittal Date		Contractor	

PR09/ PR19/ PR39 Multi-Turn Angle Stop – CPVC x Compression

Use: For use in potable water distribution systems in accessible locations only. Not intended for recirculating water systems that produce continuous use temperatures above 115° F. For those applications, use our KT™ series ball stop.

Design Features:

- **Machined one-piece brass body** provides strength, durability, and long-lasting performance
- **Oval knurled handle** provides a secure grip and smooth on/off operation
- 

**Operating Specifications:**

Temperature: 40° - 160° F

Pressure: 125 PSI maximum

Excludes loose
key handle

STOP MATERIAL SPECIFICATIONS	
Body	Brass or brass, plated
Stem	POM; brass; or brass, plated
Handle	ABS, plated or polycarbonate
Handle Screw	Steel, zinc plated
Bib & Packing Washer	Rubber

STOP MATERIAL SPECIFICATIONS	
Packing Nut	Brass or brass, plated
CPVC Insert	CPVC
CPVC Washer	Rubber
CPVC Nut	Brass or brass, plated
Compression Sleeve & Nut	Brass

Part Listing:

<input type="checkbox"/>	PR09X R	1/2" nom CPVC x 1/4" OD compression, rough brass
<input type="checkbox"/>	PR19X R	1/2" nom CPVC x 3/8" OD compression, rough brass
<input type="checkbox"/>	PR19X BZ	1/2" nom CPVC x 3/8" OD compression, oil rubbed bronze
<input type="checkbox"/>	PR19X NS	1/2" nom CPVC x 3/8" OD compression, satin nickel
<input type="checkbox"/>	PR19X C1	1/2" nom CPVC x 3/8" OD compression, chrome, window tray
<input type="checkbox"/>	PR39X C	1/2" nom CPVC x 1/2" OD compression, chrome
<input type="checkbox"/>	PR39X R	1/2" nom CPVC x 1/2" OD compression, rough brass
<input type="checkbox"/>	SPR19X C	1/2" nom CPVC x 3/8" OD compression, loose key, chrome

HANDLE MATERIAL SPECIFICATIONS	
Loose Key	Zinc die cast
Loose Key Stem	Brass
Lock Shield	Brass, plated

This specification and all information contained herein is the confidential and exclusive property of BrassCraft Manufacturing Company and shall not be disclosed to others without the written consent of BrassCraft. This specification must be returned to BrassCraft if requested.

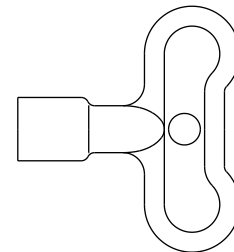
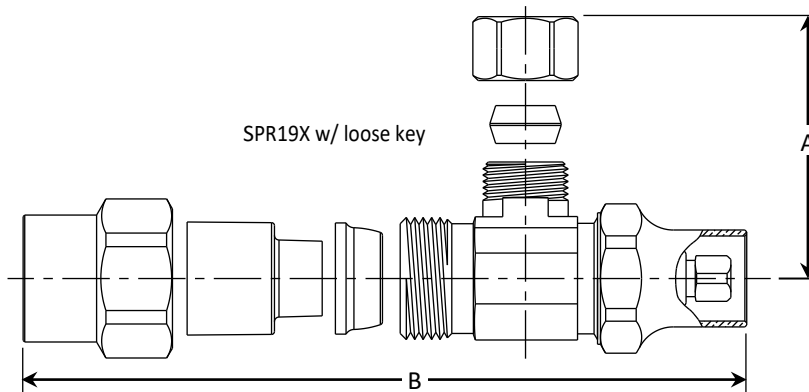
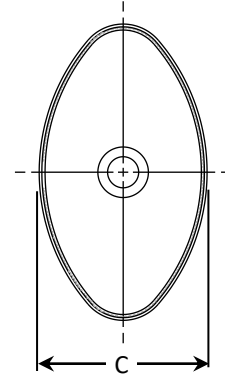
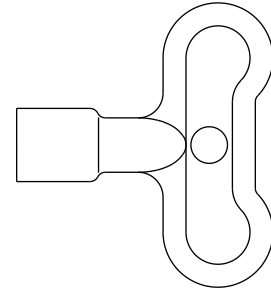
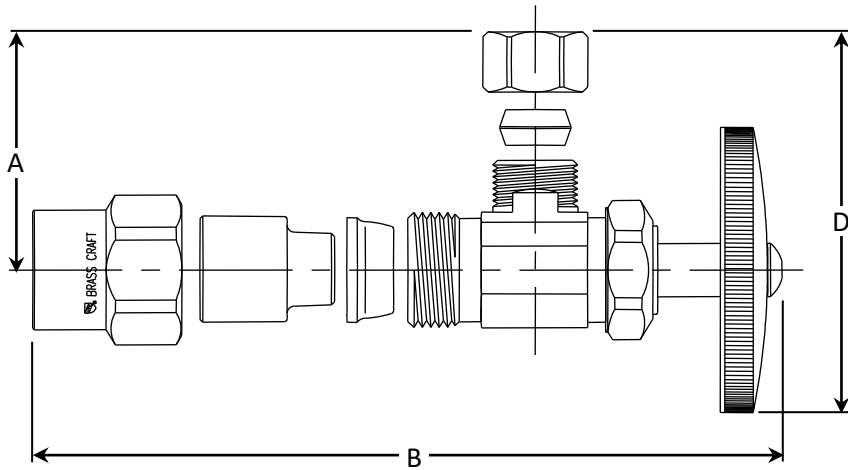
400.77 PR09/19/39X Multi-Turn Angle Stop - CPVC x Comp REV 3.23

BrassCraft®

©2023 BrassCraft Manufacturing Company

PR09/ PR19/ PR39 Multi-Turn Angle Stop – CPVC x Compression

PART DIMENSIONS (Inches)					
Model	DIM. A	DIM. B w/Loose Key	DIM. B w/Handle	DIA. C	DIM. D
PR09X	1.01	N/A	2.75	1.14	1.76
PR19X	1.01	N/A	2.75	1.14	1.76
PR39X	1.15	N/A	2.75	1.14	1.76
SPR19X	1.01	3.09	N/A	N/A	N/A



OPTIONAL "LOOSE KEY"

Listings & Certifications:

- IAPMO listed to ASME A112.18.1 / CSA B125.1 (includes NSF/ANSI372 & NSF61)

NSF/ANSI/
CAN61:Q≤0.5



Excludes loose
key handle

This specification and all information contained herein is the confidential and exclusive property of BrassCraft Manufacturing Company and shall not be disclosed to others without the written consent of BrassCraft. This specification must be returned to BrassCraft if requested.

400.77 PR09/19/39X Multi-Turn Angle Stop - CPVC x Comp REV 3.23

BrassCraft

©2023 BrassCraft Manufacturing Company