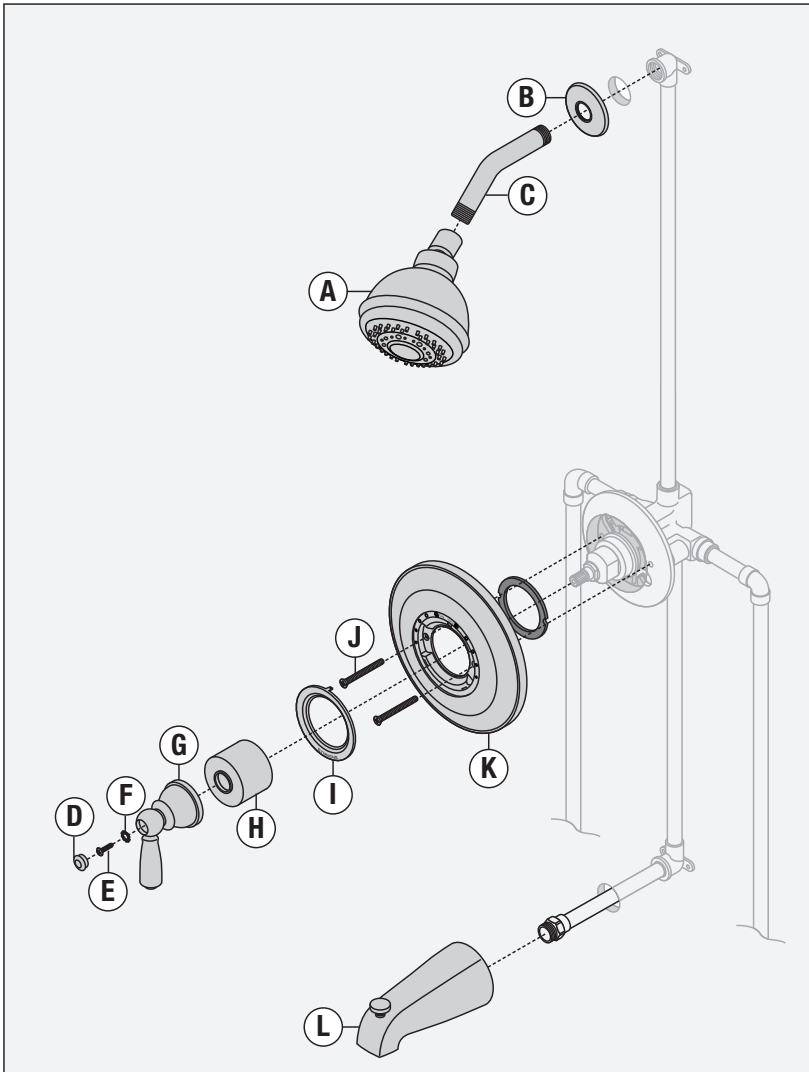


## Parts Breakdown



**\*Note:** Apply a bead of silicone around the perimeter of the escutcheon after installing trim flush with wall. Leave opening on bottom of escutcheon for weep hole.

### Replacement Parts

Item	Description	Part Number
A	Showerhead	4-143
B	Flange	430SS
C	Shower Arm (flange included)	300S
D	Plug Button	RTS-026
E	Handle Screw	
F	Star Washer	
G	Handle	
H	Dome Cover	T-19
I	Dial	T-133C
J	Mounting Screws	
K*	Shower Escutcheon	
L	Diverter Tub Spout	054

### Notes:

- 1) Append -STN to part number for Satin Nickel finish.
- 2) Append -1.5 or -2.0 to showerhead for low flow.

### Tools Required for Installation

Adjustable wrench	
Phillips head screwdriver	
Plumber tape	
Silicone	