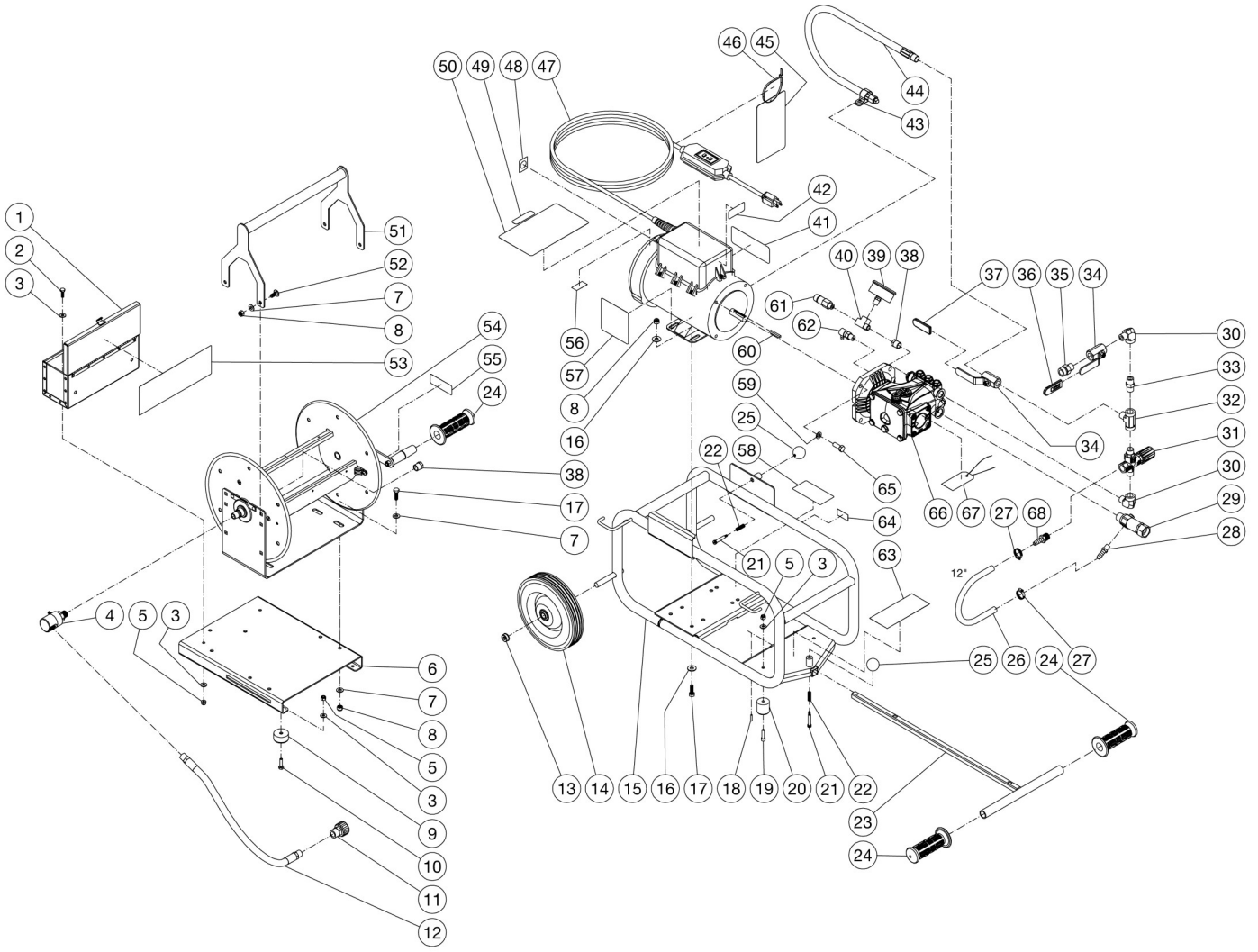


JM-1450 PARTS LIST

ITEM	DESCRIPTION	PART #	QTY	ITEM	DESCRIPTION	PART #	QTY
1	COMPONENT TOOL BOX	JM20-1213A64	1	38	REDUCER	JM23-0017	2
2	BOLT	JM27-0015	2	39	PRESSURE GAUGE	JM22-0466	1
3	WASHER	JM28-0002	10	40	TEE	JM23-0127	1
4	3/8" SWIVEL	JM24-0362	1	41	DECAL - WARNING RISK OF INJECTION/EXPLOSION (SEE JM71-0001)	N/A	1
5	LOCKNUT	JM30-0155	8	42	DECAL - PUMP INSTRUCTIONS (SEE JM71-0001)	N/A	1
6	HOSE REEL MOUNTING PLATE	JM20-1218A01	1	43	CLIP	JM33-0291	1
7	WASHER	JM28-0003	12	44	HOSE - 24" LONG	JM15-0308	1
8	LOCKNUT	JM30-0157	12	45	TAG - WARNING RISK OF ELECTROCUTION	JM34-1035	1
9	ISOLATOR	JM14-0069	4	46	CABLE TIE	JM33-0022	1
10	BOLT	JM27-0016	4	47	MOTOR ASSEMBLY (010)	JM851-0388	1
11	SCREW COUPLER	JM23-0490	1	-	MOTOR ASSEMBLY (020)	JM2-0194	1
12	HOSE - 18" LONG	JM15-0313	1	48	DECAL-ON/OFF (SEE JM71-0001)	N/A	1
13	HUB CAP	JM33-0055	2	49	DECAL - WARNING BACKFLOW PROTECTION	N/A	1
14	WHEEL	JM14-0124	2	50	DECAL - WARNING RISK OF ELECTROCUTION (SEE JM71-0001)	N/A	1
15	FRAME	JM5-0305A64	1	51	HOSE REEL HANDLE	JM7-0273A18	1
16	WASHER	JM28-0022	8	52	CARRIAGE BOLT	JM31-0046	4
17	BOLT	JM27-0067	8	53	DECAL - WARNING/OPERATION SEWER JET ELEC	N/A	1
18	SPRING PIN	JM43-0138	1	54	HOSE REEL	JM50-0220	1
19	BOLT	JM27-0850	2	55	DECAL - PROP 65	N/A	1
20	ISOLATOR	JM14-0119	2	56	DECAL - ON/OFF JM-1450	N/A	1
21	SHOULDER SCREW	JM27-0895	2	57	DECAL - CAUTION/IMPORTANT - (E/S)	N/A	1
22	SPRING	JM49-0165	2	58	DECAL- SILVER STICKER	N/A	1
23	HANDLE	JM7-0224	1	59	LOCKWASHER	JM29-0008	4
24	HANDLE GRIP	JM7-0059	2	60	KEY	JM43-0072	1
25	BALL KNOB	JM7-0223	2	61	POP-OFF VALVE	JM22-0046	1
26	BYPASS HOSE * (ONE FOOT REQUIRED)	JM15-0020	1	62	HEAT DUMP VALVE	JM22-0408	1
27	HOSE CLAMP	JM42-0011	2	63	DECAL - JM-1450 BASEPLATE	N/A	1
28	BARB	JM23-0069	1	64	DECAL - JM-1450 1500PSI MAX	N/A	1
29	FILTER	JM19-0207	1	65	BOLT	JM27-0117	4
30	ELBOW	JM24-0105	2	66	PUMP	JM3-0367	1
31	UNLOADER	JM8-0629	1	67	TAG - IMPORTANT OIL PLUG	JM34-1067	1
32	TEE	JM24-0184	1	68	HOSE BARB	JM23-0073	1
33	NIPPLE	JM24-0010	1	-	DECAL SET/JM-1450	JM71-0001	1
34	BALL VALVE	JM22-0494	2				
35	SCREW NIPPLE	JM23-0493	1				
36	HANDLE GRIP	JM7-0226	1				
37	HANDLE GRIP	JM7-0230	1				
					*MUST ORDER IN ONE FOOT LENGTHS		



JM-1450 PUMP ASSEMBLY PARTS LIST

ITEM	DESCRIPTION	PART #	QTY	ITEM	DESCRIPTION	PART #	QTY
1	VALVE PLUG	JM39-0241	6	27	OIL CAP	JM39-0090	1
2	O-RING - 15.6mm X 1.78mm (SEE 70-0565)	JM25-0644	6	28	NUT	JM30-6016	3
3	COMPLETE VALVE (SEE 70-0456)	N/A	6	29	WASHER	JM26-0187	3
4	SCREW	N/A	8	30	PISTON	JM46-1459	3
5	WASHER	N/A	8	31	SPACER	JM28-1027	3
6	HEAD	N/A	1	32	SEAL (SEE 70-0566)	JM26-0193	3
7	O-RING (SEE 70-0565)	JM25-0372	1	33	O-RING (SEE 70-0565)	JM25-0371	3
8	PLUG	JM39-0202	1	34	PISTON GUIDE	N/A	3
9	O-RING (SEE 70-0565)	JM25-0510	1	35	CONNECTING ROD	N/A	3
10	PLUG	JM39-0206	1	36	CONNECTING ROD PIN	JM46-0721	3
11	RING (SEE 70-0563)	N/A	3	37	O-RING (SEE 70-0565)	N/A	1
12	GASKET (SEE 70-0581)	N/A	3	38	REAR COVER	JM46-1455	1
13	PACKING RETAINER	JM46-1457	3	39	O-RING (SEE 70-0565)	JM25-0387	1
14	GASKET (SEE 70-0581)	N/A	3	40	PLUG	JM9-0096	1
15	RING (SEE 70-0581)	N/A	3	41	SCREW	N/A	4
16	O-RING (SEE 70-0581)	JM25-0149	3	42	CRANKSHAFT	N/A	1
17	RETAINER	JM46-1458	3	43	BEARING	N/A	1
18	PUMP BODY	N/A	1	44	SEAL (SEE 70-0566)	JM26-0192	1
19	BEARING	JM48-0063	1	45	FLANGE	JM46-1460	1
20	SNAP RING	JM46-0676	2	46	SCREW	N/A	4
21	SNAP RING	JM46-0732	1	-	KIT - VALVES (INCLUDES ITEM #3)	JM70-0456	
22	O-RING (SEE 70-0565)	N/A	1	-	KIT - SUPPORT RING (INCLUDES ITEM #11)	JM70-0563	
23	OIL DISC	JM46-1451	1	-	KIT - O-RINGS (INCLUDES ITEMS 2,7,9,16,22,33,37,39)	JM70-0565	
24	OIL INDICATOR	JM46-1452	1	-	KIT - OIL SEALS (INCLUDES ITEMS 32,44)	JM70-0566	
25	COVER	JM46-1453	1	-	KIT - WATER SEALS (INCLUDES ITEMS 12,14,15,16)	JM70-0581	
26	SCREW	JM27-8888	8				

