

Proudly Made in
the U.S.A.

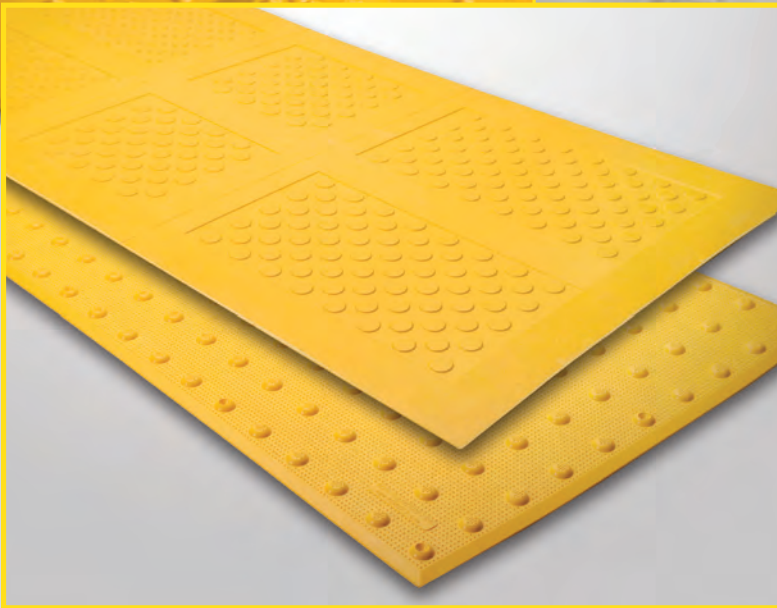


ADA SOLUTIONS, INC.
DETECTABLE WARNING SURFACES
FOR PEDESTRIAN CROSSINGS

SURFACE MOUNT TACTILE



Service, Delivery and Price
Make ADA Solutions, Inc. the Obvious Choice



SURFACE MOUNT TACTILE

*Proudly Made in
the U.S.A.*



IONS INC
E.COM



SURFACE MOUNT TACTILE



Installation Procedure

Be sure to read and understand all of these instructions before you begin.

- A.** The installation area should be cleaned of all debris, oil and grease, making sure the area is completely free of moisture. Tactile Panel may be surface mounted on existing pre-cleaned substrate.
- B.** Lay out the Tactile Panel on the substrate as it will appear when installed.
- If required, the Tactile Panel may be cut using a table saw and marble tipped blade. See web site for more details.
- C.** Place a 3/8" bead of adhesive on the frame of the bottom of each Tactile Panel. Adhesive yield: 10SF per 10 ounce cartridge.
- D.** Set the Tactile Panel in the installation area. Make all necessary adjustments prior to fastening.
- E.** Fasteners shall be installed in pre-formed fastener locations. Holes shall be drilled using a hammer drill with 1/4" x 2" min SDS bits. The drilled holes must be a minimum of 2" deep. Place fasteners in hole and hammer into place.
- If additional fasteners are required, use a 1/2", six point, 82 degree countersink to add a new fastener location. Follow the same drilling method for installing the fastener.
- F.** Caulk around perimeter of entire installation using BASF NP1 or equivalent.
- All concrete dust present on the Tactile Panel resulting from the drilling process must be cleaned off of the Tactile Panel prior to using any caulking materials.



*Not recommended or warranted for asphalt installation.

*View additional photos, drawings and specifications
on our website: www.adatile.com.
Call (800) 372-0519 with any questions.*

PRODUCT SIZES
2'x3' 2'x4' 2'x5'
3'x4' 3'x5'

APPLICATION
Existing
Concrete Ramps

SURFACE MOUNT TACTILE

Inline Dome Pattern

DOMES GEOMETRY

In accordance with ADA Regulations for Detectable Warning on Curb Ramps: Raised truncated domes with a diameter of nominal 0.9", a height of nominal 0.2", and a center-to-center spacing of nominal 1.67" minimum and 2.35" maximum.

PANEL DIMENSIONS

Tactile Panels are available in 24"x36", 24"x48", 24"x60", 36"x48" and 36"x60" sizes and measure 3/16" thick. Panels can be custom cut to fit field conditions. All four edges of each panel have a 1/2" beveled edge. Each panel has 12 to 24 pre-formed fastener locations based upon panel size.



MATERIAL

A homogenous glass and carbon reinforced composite which is colorfast and UV stable. Truncated domes are fiberglass reinforced for enhanced durability. The Tactile panel color is uniform throughout and does not rely on any type of paint coating to achieve color stability. Standard colors include: Federal Yellow, Brick Red, Clay Red, Safety Red, Blue, Dark Gray and Black.

PHYSICAL CHARACTERISTICS

Compressive Strength	28,900 psi	ASTM D 695
Flexural Strength	29,300 psi	ASTM D 790
Water Absorption	.07%	ASTM D 570
Slip Resistance	1.18 Dry/1.05 Wet	ASTM C 1028
Flame Spread Index	20	ASTM E 84
Salt Spray	No Change (200 hours)	ASTM B 117
Chemical Stain Testing	No Deterioration	ASTM 1308
Abrasion Resistance	549	ASTM C 501
Accelerated Weathering	Delta E<5.0 (2,000 hours)	ASTM G 155
Tensile Strength	11,600 psi	ASTM D 638
Adhesion to Conc. (20-180 degrees)	No Delamination or Degradation	ASTM C 903
Freeze/Thaw/Heat	No Disintegration	ASTM C 1026

INSTALLATION

ADA Surface Applied TWS Panel (Existing Concrete): TWS panel can be easily installed (adhered, fastened & sealed) in a matter of minutes.

INCIDENTALS

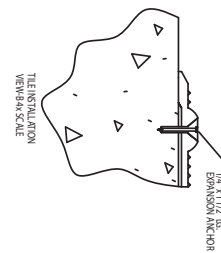
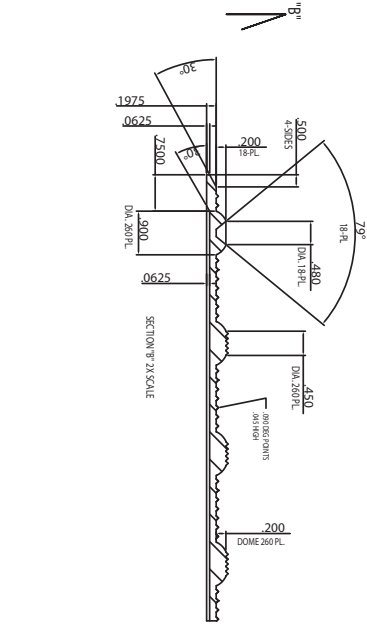
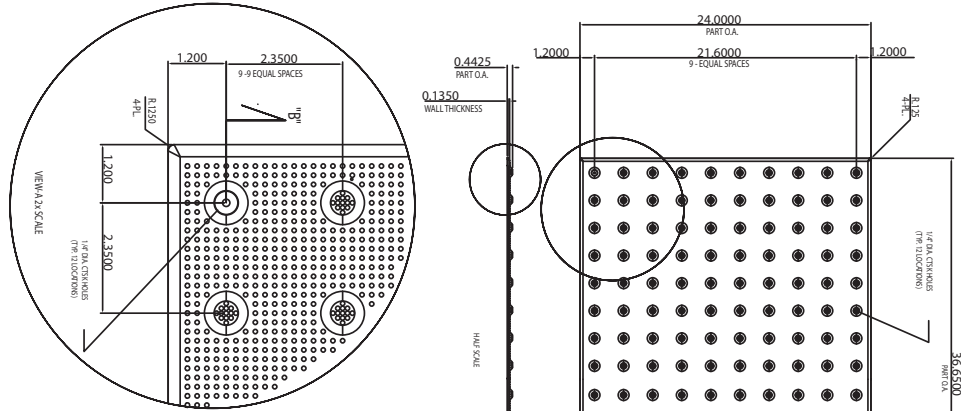
- Fasteners:** 1/4" x 1 5/8", composite sleeve anchor with stainless steel pins.
- Adhesive:** One component structural elastomeric adhesive.
- Sealant:** BASF NP1, Sikaflex 1A, or equivalent.

5-Year
Warranty

Color
Throughout

SURFACE MOUNT COMPOSITE TACTILE

24"x36" Tile
2.35" Dome Spacing



WWW.ADATILE.COM

MATERIAL LIST			
ITEM	DESCRIPTION	PART NO.	QTY
1			
2			
3			
4			

AS NOTED
FIELD SIZE

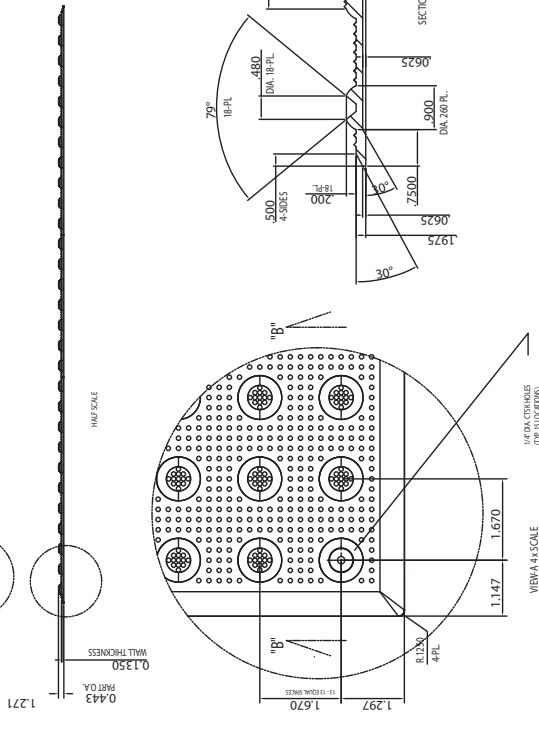
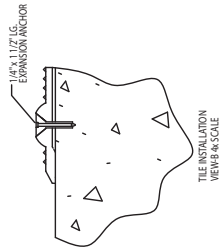
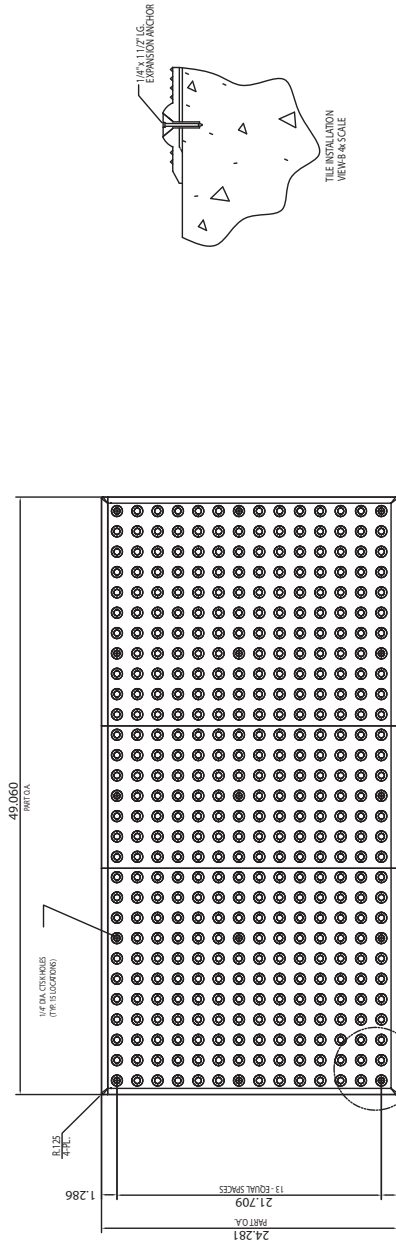
PROJECT	DATE
DESCRIPTION	BY
REVISIONS	DATE

PROJECT: SURFACE APPLIED DETECTABLE WARNING SURFACE SYSTEM 24" X 36" SOUND ATTENUATING CURB RAMPTILE (INLINE DOME) PLANS AND DETAILS

COMPANY: ADA SOLUTIONS, INC.
PO Box 3
NBillerica, Ma. 01862

SURFACE MOUNT COMPOSITE TACTILE

24"x48" Tile
1.67" Dome Spacing

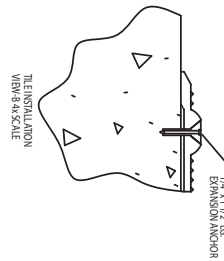
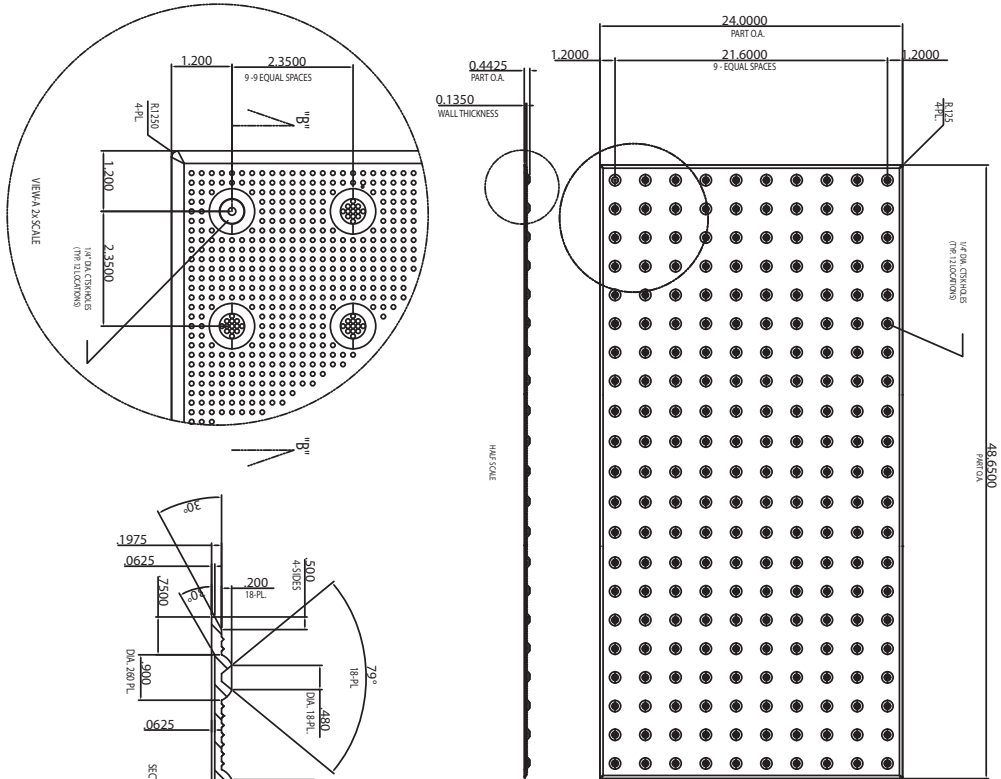


WWW.ADATILE.COM

MATERIAL LIST		
ITEM	DESCRIPTION	QTY
1		
2		
3		
4		
SCALE		
FINISHED FULL SIZE		
THICKNESS	FINISH	DESCRIPTION
1.67	1.67	1.67
PROJECT		
SURFACE APPLIED DETECTABLE WARNING SURFACE SYSTEM		
24" x 48" SOUND ATTENUATING CURB RAMP TILE (IN-LINE DOME) PLANS AND DETAILS		
DRAWING NO.		
REF. NO.		
ADA SOLUTIONS, INC.		
PO Box 3		
N.Billerica, Ma. 01862		

SURFACE MOUNT COMPOSITE TACTILE

24"x48" Tile
2.35" Dome Spacing



WWW.ADATILE.COM

MATERIAL LIST

ITEM	DESCRIPTION	PART NO.	QTY
1			
2			
3			
4			

SCALE: AS NOTED FULL SIZE

NOTE: SEE MATERIAL LIST

PRODUCT: SURFACE MOUNT COMPOSITE TACTILE

PROJECT: SURFACE APPLIED DETECTABLE WARNING SURFACE SYSTEM

DATE: 24" x 48" SOUND ATTENUATING CURB RAMP TILE (INLINE DOME) PLANS AND DETAILS

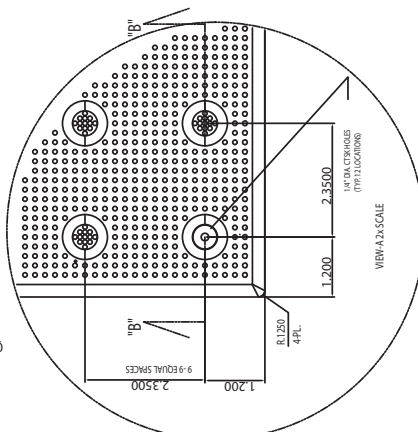
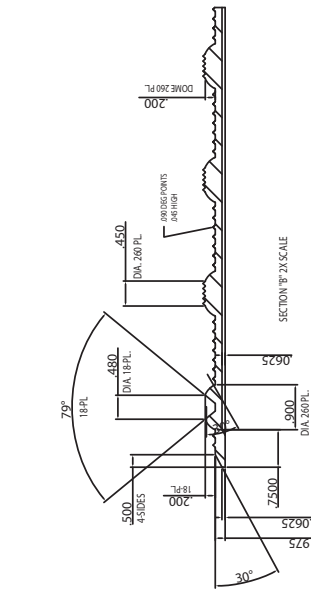
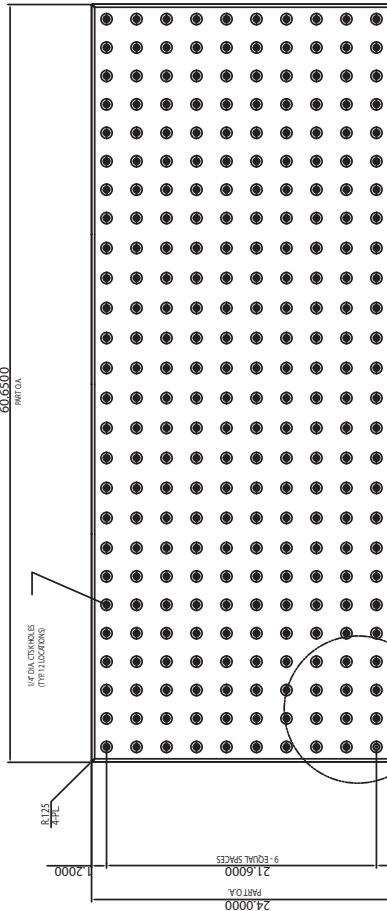
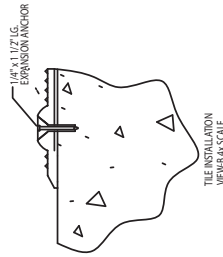
COMPANY	ADA SOLUTIONS, INC.
ADDRESS	1 Survey Circle
CITY	N.Billerica, Ma. 01862
PHONE	
FAX	
EMAIL	

SURFACE MOUNT COMPOSITE TACTILE

24"x60" Tile
2.35" Dome Spacing

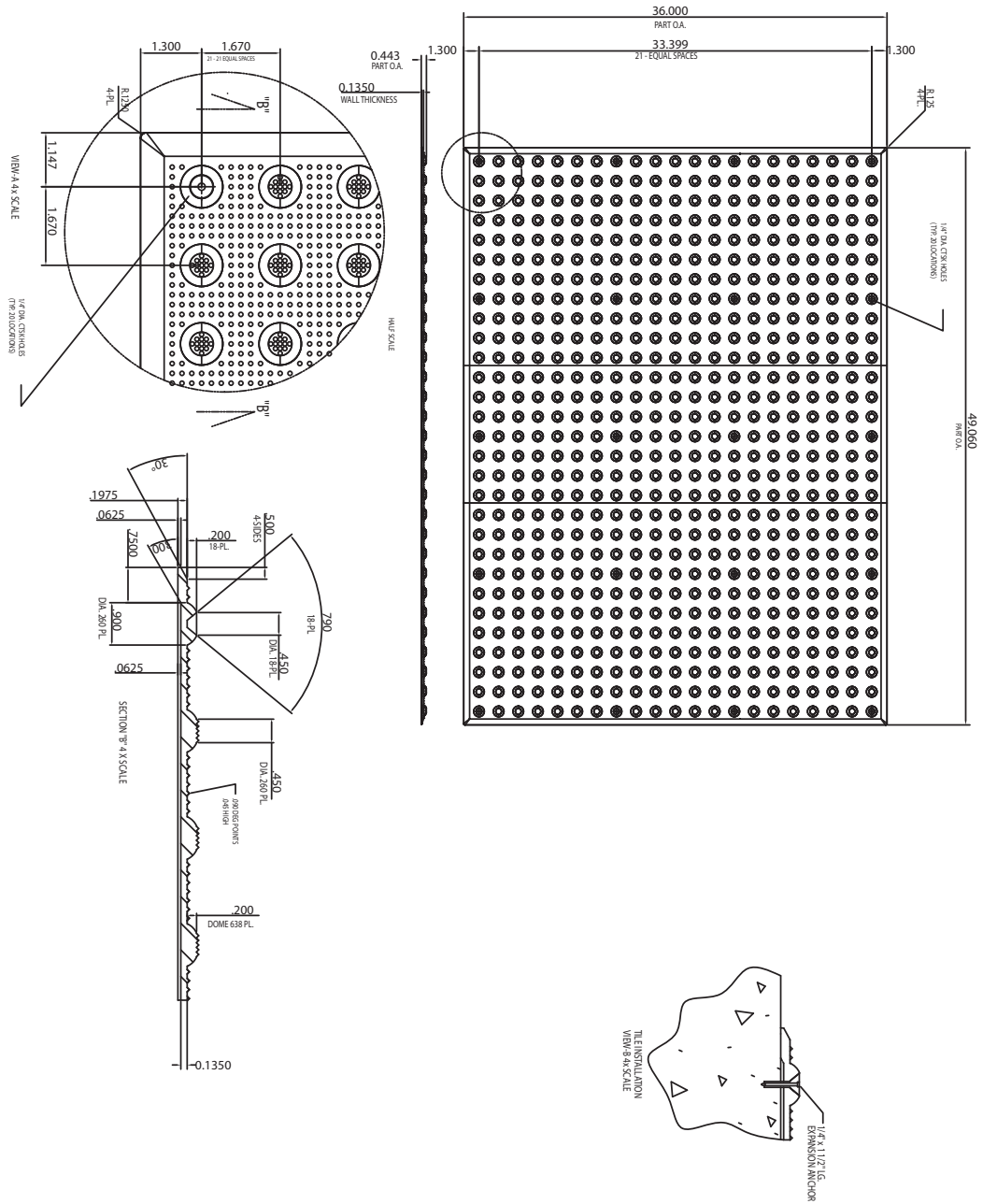
WWW.ADATILE.COM

MATERIAL LIST		
ITEM	DESCRIPTION	QTY
1		
2		
3		
4		
SCALE		AS NOTED
TRACE	DESCRIPTION	PART NO.
MATERIAL		SEE MATERIAL LIST
PROJECT		
SURFACE APPLIED DETECTABLE WARNING SURFACE SYSTEM 24" X 60" SOUND ATTENUATING CURB PAVEMENT (INLINE DOME) PLANS AND DETAILS		
DRAWING NO.		REV. NO.
ADA SOLUTIONS, INC. P.O. Box 3 N.Billerica, Ma. 01862		



SURFACE MOUNT COMPOSITE TACTILE

36"x48" Tile
1.67" Dome Spacing



00001.ADATILE.COM

MATERIAL LIST			
ITEM	DESCRIPTION	PART NO.	QTY
1			
2			
3			
4			

SCALE: PART SIZE / FULL SIZE

TITLE	00001.ADATILE.COM
DATE	
DRAWN BY	
CHECKED BY	
PROJECT	36" x 48" SURFACE MOUNT COMPOSITE TACTILE
DESCRIPTION	36" x 48" SURFACE MOUNT COMPOSITE TACTILE
SCALE	

ADA SOLUTIONS, INC.
PO Box 3
N.Billerica, Ma. 01862

SURFACE MOUNT COMPOSITE TACTILE

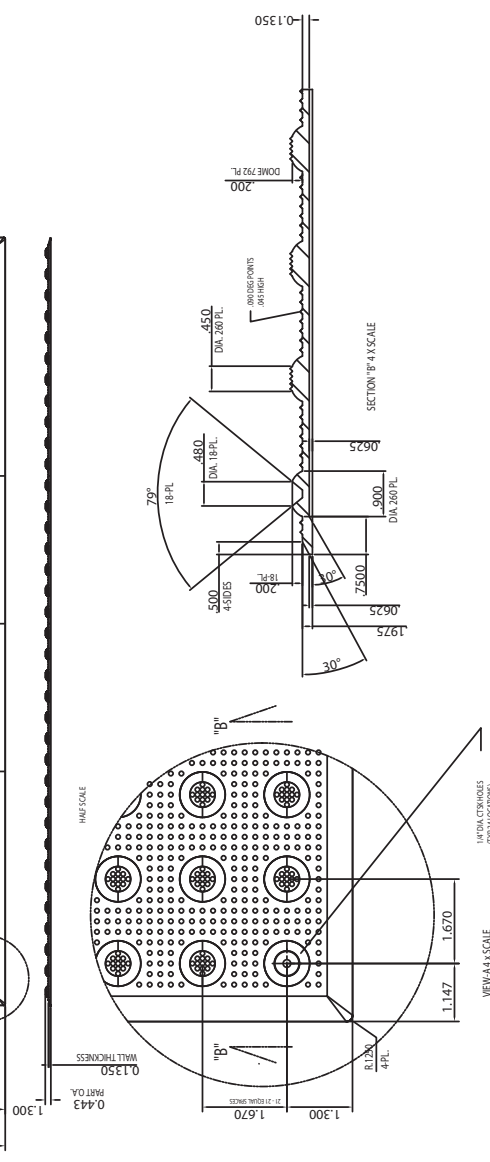
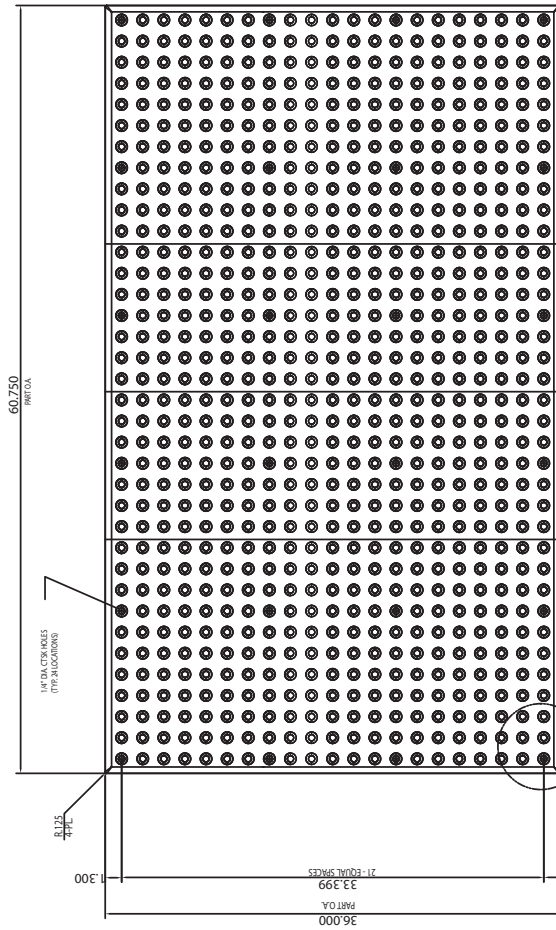
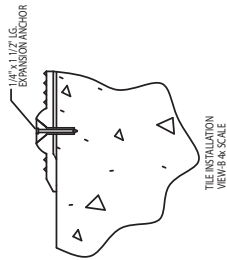
36"x60" Tile
1.67" Dome Spacing

WWW.ADATILE.COM

MATERIAL LIST		PART NO.	QTY
ITEM	DESCRIPTION		
1			
2			
3			
4			
SCALE		AS NOTED FULL SIZE	

TRUCK	EXTENDING SURFACE	PART NO.	SEE MATERIAL LIST
MATERIAL			
PROJECT	SURFACE APPLIED DETECTABLE WARNING SURFACE SYSTEM 36" x 60" SOUND ATTENUATING CURB RAMP TILE (INLINE DOME) PLANS AND DETAILS		
DRAWING		REVNO.	

ADA SOLUTIONS, INC.
 PO Box 3
 N.Billerica, Ma. 01862





Wherever you go...
There we are™

- **INDUSTRY LEADING SERVICE, DELIVERY AND PRICE**
- **ONE PIECE APPLICATION**
- **TIME-SAVING INSTALLATION**
- **CAST-IN-PLACE REPLACEABLE**
- **RADIUS REPLACEABLE (WET-SET)**
- **RADIUS SURFACE MOUNT**
- **SURFACE MOUNT (RETROFIT)**
- **CAST IN PLACE (WET-SET)**
- **ADAAG COMPLIANT**
- **AVAILABLE STANDARD SIZES**
2'x3' • 2'x4' • 2'x5' • 3'x4' • 3'x5' • 2'x33¼"
- **UNIFORM COLOR THROUGHOUT**

