

MODELS 38-PRXL 38-PRST 12-PRXL, 12-PRST



1/2" LOW FLOW BY-PASS, MODEL ZW209BP (1-1/4" to 3")

3/8" PILOT REGULATOR - ZW209

3/8" PILOT REGULATOR STAINLESS STEEL (DOUBLE UNION)

ITEM NO.	ITEM NO.	DESCRIPTION	QUANTITY
1	PR-1XL-010F	PR BODY 3/8", ZW209XL FIN	1
	PR-1SS-010F	PR BODY 3/8", ZW209XL SS FIN	1
2	PR-CARTXL	CARTRIDGE XL	1
	PR-CARTST	CARTRIDGE SS	1
3	BR2-33SS	SPRING SS	1
4	BR2-80ASS	SPRING DISC SS	1
5	BR2-80CSS	FRICTION RING SS	1
6	PRA-1-010F	PR BELL, 3/8" FIN	1
	PRA-1SS-010F	PR BELL, SS 3/8" FIN	1
7	606C-12	WASHER	1
8	TPRXL	TAG, PRXL - ZW209 PILOT	1
9	957-9	NUT	1
10	603A-11ASSHR	BOLT, 3/8-16x2 SS	1
11	117N	UNION GASKET	2
12	38X12-19XL	TAILPIECE	2
	38X12-19SS	TAILPIECE SS	2
	601-19XL	TAILPIECE	2
	601-19SS	TAILPIECE SS	2
13	601-9-010F	UNION NUT	2
	601-19SS	UNION NUT SS	2

REPAIR KIT PRXL, PRST MODEL
REPAIR KIT 3/8" and 1/2" PILOT REGULATOR - ZW209

RK38-PRXL

RK38-PRST

DESCRIPTION	QTY.	3/8"	3/8"
CART ASSEMBLY, 3/8" & 1/2" PRXL / PRST	1	PR-CARTXL	PR-CARTST
SPRING	1	BR2-33SS	BR2-33SS
FRICTION RING	1	BR2-80CSS	BR2-80CSS
DISC SPRING	1	BR2-80ASS	BR2-80ASS
UNION GASKET	2	117N	117N

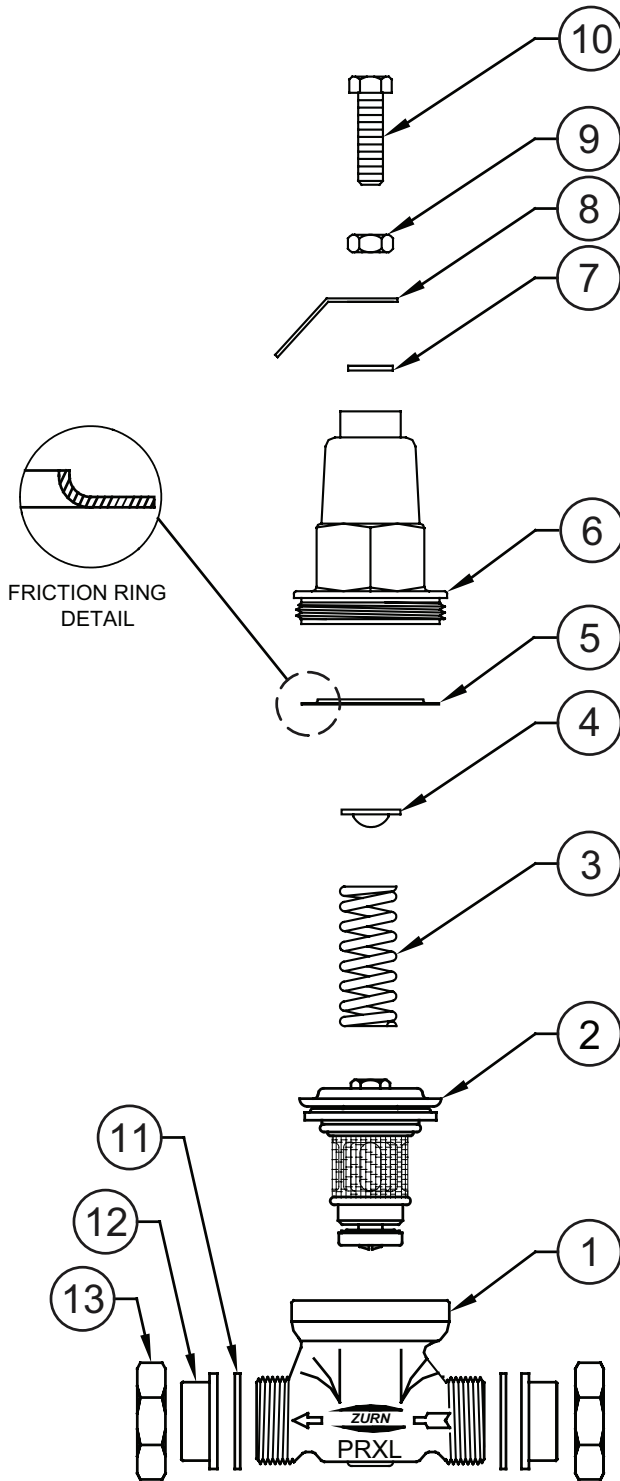
MODEL PRXL/PRST

Parts Drawing

- Item included in specified Model

Stainless Steel Pilots use the same parts except those noted below

	38-PRXL	38-PRST	12-PRXL	12-PRST	
	●		●		
		●		●	
	●		●		★
		●		●	★
	●	●	●	●	★
	●	●	●	●	★
	●	●	●	●	★
	●		●		
	●	●	●	●	
	●	●	●	●	
	●	●	●	●	
	●	●	●	●	★
	●	●	●	●	
	●	●	●	●	
	●	●	●	●	
	●	●	●	●	
	●	●	●	●	
	●		●		
		●			
			●		
	●		●		
		●		●	



PRXL (3/8", 1/2")
PRST (3/8", 1/2")

★ REPAIR KIT ITEMS (ALL ★ ITEMS IN KIT)