



**Cartridge  
Filters**

# Sediment Cartridges



## Polypropylene String Wound

- Ideal for well water installations
- Depth filtration
- Reduction of sand, silt, scale, & rust particles
- Maximum temperature 100°F
- Individually shrink wrapped

Part Number	Size D x L	Micron Rating	Case Qty
SW1001-24	2.5 x 10	1	24
SW1005-24	2.5 x 10	5	24
SW1010-24	2.5 x 10	10	24
SW1020-24	2.5 x 10	20	24
SW2005-30	2.5 x 20	5	30
SW2010-30	2.5 x 20	10	30
SW2020-30	2.5 x 20	20	30
SWJ1005-9	4.5 x 10	5	9
SWJ1010-9	4.5 x 10	10	9
SWJ1020-9	4.5 x 10	20	9
SWJ2005-9	4.5 x 20	5	9
SWJ2010-9	4.5 x 20	10	9
SWJ2020-9	4.5 x 20	20	9



## Poly-Bonded

- 100% polypropylene construction
- Micro-fiber design
- With stands high pressure differentials
- Provides depth filtration
- Maximum temperature 140°F
- Individually shrink wrapped

Part Number	Size D x L	Micron Rating	Case Qty
PB0505-24	2.5 x 05	5	24
PB0510-24	2.5 x 05	10	24
PB0520-24	2.5 x 05	20	24
PB1005-24	2.5 x 10	5	24
PB1010-24	2.5 x 10	10	24
PB1020-24	2.5 x 10	20	24
PB2005-24	2.5 x 20	5	24
PB2010-24	2.5 x 20	10	24
PB2020-24	2.5 x 20	20	24
PBJ1005-9	4.5 x 10	5	9
PBJ1010-9	4.5 x 10	10	9
PBJ1020-9	4.5 x 10	20	9
PBJ2005-9	4.5 x 20	5	9
PBJ2010-9	4.5 x 20	10	9
PBJ2020-9	4.5 x 20	20	9



## Grooved Poly-Bonded

- Provides a gradient density for high dirt-holding capacity superior sediment filtration
- 100% pure polypropylene
- Large surface area
- Excellent bacteria & chemical resistance
- Maximum temperature 140°F
- Individually shrink wrapped

Part Number	Size D x L	Micron Rating	Case Qty
GB0505-24	2.5 x 05	5	24
GB0510-24	2.5 x 05	10	24
GB0520-24	2.5 x 05	20	24
GB1005-24	2.5 x 10	5	24
GB1010-24	2.5 x 10	10	24
GB1020-24	2.5 x 10	20	24
GB2005-24	2.5 x 20	5	24
GB2010-24	2.5 x 20	10	24
GB2020-24	2.5 x 20	20	24
GBJ1005-9	4.5 x 10	5	9
GBJ1010-9	4.5 x 10	10	9
GBJ1020-9	4.5 x 10	20	9
GBJ2005-9	4.5 x 20	5	9
GBJ2010-9	4.5 x 20	10	9
GBJ2020-9	4.5 x 20	20	9

# Sediment Cartridges



## Polyester Pleated

- Cleanable & reusable
- Excellent for municipal & well water
- Large surface area
- High flow rates
- Resistant to bacterial growth
- Maximum temperature 100°F
- Individually wrapped

Part Number	Size D x L	Micron Rating	Case Qty
PP1005-24	2.5 x 10	5	24
PP1010-24	2.5 x 10	10	24
PP1020-24	2.5 x 10	20	24
PP2005-24	2.5 x 20	5	24
PP2010-24	2.5 x 20	10	24
PP2020-24	2.5 x 20	20	24
PPJ1005-9	4.5 x 10	5	9
PPJ1010-9	4.5 x 10	10	9
PPJ1020-9	4.5 x 10	20	9
PPJ2005-9	4.5 x 20	5	9
PPJ2010-9	4.5 x 20	10	9
PPJ2020-9	4.5 x 20	20	9

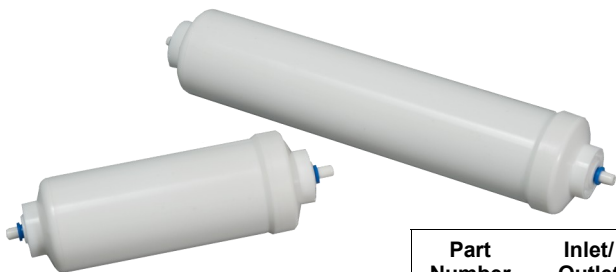


## Cellulose Pleated

- Economically priced sediment cartridge for municipal/ chlorinated water only (not recommended for well water)
- Maximum temperature 100°F
- Individually wrapped

Part Number	Size D x L	Micron Rating	Case Qty
PC1005-24	2.5 x 10	5	24
PC1010-24	2.5 x 10	10	24
PC1020-24	2.5 x 10	20	24
PC2005-24	2.5 x 20	5	24
PC2010-24	2.5 x 20	10	24
PC2020-24	2.5 x 20	20	24
PCJ1005-9	4.5 x 10	5	9
PCJ1010-9	4.5 x 10	10	9
PCJ1020-9	4.5 x 10	20	9
PCJ2005-9	4.5 x 20	5	9
PCJ2010-9	4.5 x 20	10	9
PCJ2020-9	4.5 x 20	20	9

# Inline Carbon Filters



## Inline Filters

- 6" & 10" lengths available
- Choice of threaded or quick release connectors
- 1/4" and 3/8" connections
- Maximum temperature 100°F

Part Number	Inlet/Outlet	Micron Rating	Length	Case Qty
IC06Q	1/4" JG	5	6"	12
IC06Q-38	3/8" JG	5	6"	1
IC06T	1/4" FNPT	5	6"	1
IC10Q	1/4" JG	5	10"	12
IC10T	1/4" FNPT	5	10"	1

# Taste & Odor Cartridges



## Granular Activated Carbon

- Total flow through design provides extended contact time for better taste, odor, and chlorine reduction
- Top grade coconut shell carbon has a wide range of pore sizes to remove more types of contaminants
- Maximum temperature 100°F
- Individually shrink wrapped

Part Number	Size D x L	Case Qty
GAC10-20	2.5 x 10	20
GAC20-20	2.5 x 20	20
GACJ10-9	4.5 x 10	9
GACJ20-9	4.5 x 20	9



## Carbon Block

- Radial flow design provides superior flow rates
- 5 Micron construction acts as a sediment filter
- Excellent taste, odor, and chlorine removal
- No carbon fines are released
- Maximum temperature 140°F
- Individually shrink wrapped

Part Number	Size D x L	Micron Rating	Case Qty
CB0505-24	2.5 x 5	5	24
CB1005-24	2.5 x 10	5	24
CB2005-24	2.5 x 20	5	24
CBJ1005-9	4.5 x 10	5	9
CBJ2005-9	4.5 x 20	5	9

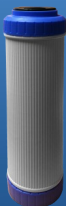
## Specialty Cartridges



### Cyst Reduction

- Cleanable & reusable
- Maximum temperature 100°F
- Individually shrink wrapped

Part Number	Size D x L	Micron Rating	Case Qty
CR10	2.5 x 10	0.3	1



### Arsenic Cartridge

- Replacement cartridge for the ARS-1
- Maximum temperature 100°F
- Arsenic reducing non-leaching material for safe disposal

Part Number	Size D x L	Case Qty
ARC10-20	2.5 x 10	20



### Nitrate Cartridge

- Replacement cartridge for the NRS-1
- Maximum temperature 100°F
- Reduces nitrates

Part Number	Size D x L	Case Qty
NRC10-20	2.5 x 10	20

## Replacement Packages for Drinking Water Systems

Part Number	Used with Sterling RO System	Filters Included
ROCP-B	DWSB-TFC-50, DWSB-50-PUMP, DWSB-50-PermPump	PB1005 Poly-Bonded Sediment Filter GAC10 Granular Activated Carbon Filter CB1005 Carbon Block Filter IC10Q, IC10T Inline Post Carbon Filter
ROQC-B	QCRO-50	QCF-S Sediment Filter QCF-GAC Granular Activated Carbon Filter QCF-CB Carbon Block Filter IC10Q Inline Post Carbon Filter
ROCRS-B	CRS-3	QCF-S Sediment Filter QCF-CB Carbon Block Filter QCF-UF UF Membrane Filter

**STERLING**  
WATER TREATMENT

12630 US Highway 33 N.  
Churubusco, IN 46723  
[www.sterlingwatertreatment.com](http://www.sterlingwatertreatment.com)