

ALL FILTRATION PRODUCT PROUDLY MADE & ASSEMBLED IN THE USA



EWS, INC.

ENVIRONMENTAL WATER SYSTEMS

PRODUCT CATALOG

ewswater.com

O: 702.256.8182 (M-F 8:30am-4:30pm PST)

F: 702.256.3744

E: customerservice@ewswater.com

Complete Product Booklets and Service Guides for each system is available online and through customer service.

Information includes all schematics, technical information, removal capabilities, how to setup, install & startup each system as well as any troubleshooting and any other information we could think of in order to help you.

Highest Quality Product & Award Winning Customer Service Since 1987

Since 1987, our goal has been to provide the most complete and thorough sales and technical information on all our product and have the smallest impact on our environment.

Everything in this Product Catalog *and more* is available online. All confidential distributor information is available through our exclusive distributor access login.

All EWS product, filters, parts and components can be recycled. All filter media (excluding softener resin) on all EWS whole home filtration systems are biodegradable.



ALL FILTRATION PRODUCT PROUDLY MADE & ASSEMBLED IN THE USA



ewswater.com

O: 702.256.8182 (M-F 8:30am-4:30pm PST)

E: customerservice@ewswater.com

F: 702.256.3744

Go to Your EWS Distributor Login

Exclusive access for all EWS Distributors to the latest information, glossary of terms, Q&A, forms, requests and a complete library of product tearsheets, booklets and service guides.

Not Registered?

Go to ewswater.com and click Distributor Login. Then click "Create An Account."

Take 30 seconds to fill out the registration form. You must use your company email address for a user name to be approved. EWS can approve access to qualified individuals in 24 hours.

Have a Question...?

Seriously....give us a call. We're here to help.

EWS is a Proud Contributor and Sponsor of Organizations Dedicated to Improving Health, Well-Being and the Environment

- Heart • Lung & Respiratory • Allergy & Asthma • Dermatology & Skin • Digestive: Crohn's & Colitis • Oceans • Inland Water Ways • Wetlands • Forestry • Soil • Air •



Contact Information	2
Water Quality Issues Affecting the Whole Home	4
Easy to Use Chart for the Recommended System	5

Residential Whole Home "Central" Water Filtration

FIND THE RIGHT PRODUCT FOR YOU - "HOW TO SELECT"	7
EWS Series whole home water filtration and conditioning of the issues associated with water hardness	8
CWL Series whole home water filtration where water hardness is not an issue	9
Product Tearsheet (All EWS/CWL Whole Home Systems - Showroom Series)	10
Filtration Capabilities, Tech Talk and Filter Reference Chart	14

Residential Softener Systems

Softener Options	17
Softener Systems and Tech Information	18

Essential Drinking Water Systems

FIND THE RIGHT SINK FILTER FOR YOU - "HOW TO SELECT"	21
Essential Drinking Water Filtration Systems	22
Essential Single Stage Water Filtration Unit	22
Essential Reverse Osmosis Systems	23
Filter Set Replacements and UV Replacements	24
Dispenser Finish and Other Options	25
Product Tearsheets (Model #'s DWS/DWS-UV, SS, RO3/RO3-UV, RO4/RO4-UV)	26
Filtration Capabilities and Filter Technical	34
Reverse Osmosis Information - Is this the right system for you?	37
Pre-2012 Filter Set Replacement	39
ELF Replacement Filter and Filter Tearsheet	39

Professional Series

THE SPECTRUM IS THE RIGHT PRODUCT FOR YOU, YOUR FAMILY & YOUR HOME - "HOW TO SELECT"	43
EWS Spectrum Series and EWS Chloramine Spectrum Series	44
CWL Spectrum Series and CWL Chloramine Spectrum Series	45
Product Tearsheet - EWS/CWL Spectrum Series	46
Product Tearsheet - EWS/CWL Chloramine Spectrum Series	48
Spectrum Schematic and Technical Information	50
Heater Guard	51
Point of Entry Cartridge Filtration	51
Spectrum Softener	51
Product Tearsheet (EWS Heater Guard-3/4, EWS Heater Guard-1.5)	52
Filtration Capabilities, Tech Talk and Filter Reference Chart	54

Well Water Applications

Product Selection including but limited to the following	
5-Stage RO, Iron Removal Systems, pH Balancing, POE Pre-Sediment 5 Micron & 3 Micron Filtration	57
Well Water - Where to Begin and How to Proceed, Well Water Schematic, Well Water Testing	58

Commercial Applications

Product Selection including but limited to the following	
Customized Commercial Filtration, Disinfection, Iron Removal, Softening and Reverse Osmosis	63
Commercial Application - Questionnaire - Proper Questions for the Proper Specification	64

Product Compliances and Warranties

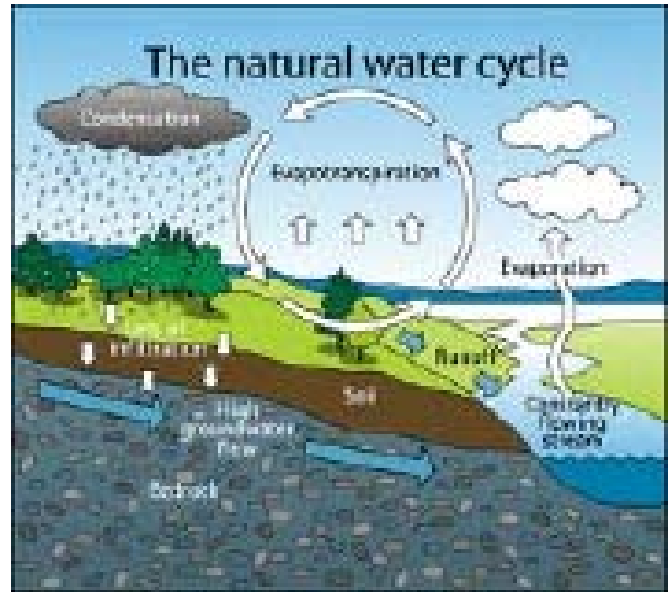
Compliances and Performance Guidelines	68
Warranty	70

ALL FILTRATION PRODUCT PROUDLY MADE & ASSEMBLED IN THE USA



Water Quality and Aesthetic Issues Affecting the Whole Home

- ✓ Chlorine
- ✓ Chloramine
- ✓ Harmful chlorine by-products
- ✓ Man-Made pollutants
- ✓ Arsenic
- ✓ Acidic water
- ✓ Tannins
- ✓ Turbidity or water clarity
- ✓ Bad Tastes
- ✓ Foul odors
- ✓ Iron
- ✓ Manganese
- ✓ Hardness



Remember elementary, middle or high school...?
And you thought you would never need or see this again.



How the natural water cycle will help you select the correct EWS System(s) for your customer.

Nature intended for us to have high-quality fresh water which is provided by the continuous water cycle. Water from oceans, rivers, lakes, streams and wetlands evaporate and falls to the ground as rain or snow and becomes filtered through the earth's surface. Water works its way through rock and soils only to return to oceans, rivers, lakes, streams and wetlands.

The consequences of nature is that water may pick up the naturally-found calcium & magnesium minerals when going through limestone filtration causing water hardness or may find its way through other rock formations where it may come in contact with iron, manganese, arsenic or other naturally occurring inorganics or elements found in that periodic table of elements from high school chemistry you thought you'd never see again.

However, it is the consequences of man that affect our water more frequently than any issues with nature.

What you need to know about our municipally-treated tap water.

Unlike individual well water, "tap or city" water is constantly monitored, tested and filtered through many processes in order to provide water to your home. In the USA, we all expect to flip a switch and expect our lights to go on and likewise when we turn the faucet on, we expect water.

Municipal water treatment is responsible for removing any of the contaminants the water may pick up during its travels through the natural water cycle. Tap water is also disinfected and by law must be absent of any microbiological issues that could affect the health of the population. Therefore chlorine and/or chloramines and other disinfectants are used to ensure safety but in doing so create unwanted issues.

Compliment municipally-treated tap water by filtering the water as it enters your home.

Like Central Heat & AC controlling your air environment, EWS developed Central Water because chlorine, chloramine, by-products, VOCs, and man-made pollutants should not be in your water to drink, absorb or inhale. The long-term effects of exposure to these chemicals are well-documented.

The President's Cancer Panel recommends the use of home filtering devices to decrease exposure to cancer-causing agents* and the Water Quality Association has reaffirmed what independent tests show – that "home water treatment is a proven final barrier against harmful chemicals."** We have always known this and since 1987, EWS Central Water Filtration Appliances have provided healthy, quality water for hundreds of thousands of people worldwide.

What you need to know about well water.

No product should ever be specified without complete and independent testing. See Well Water Section.

Water Quality Issues	Symptoms	Recommended System
Chlorine, bad taste and odors, harmful chlorine by-products, VOC's, man-made pollutants	Chlorine can cause off or bad taste and odors, damage to skin, hair, dry nasal membranes, respiratory and asthma issues and is connected to certain cancers and health issues. Deterioration of rubber, metal and plastics, including all fixtures, toilets, piping, and appliances, just to name a few	EWS-1354 (1) CS-EWS-1354-7000 (2) <i>The EWS Spectrum</i> EWS-CC-1865-7 (3) DWS (6) or RO3 (7)
Chloramine (combination compound of chlorine and ammonia), bad taste and odors, harmful chloramine by-products, VOC's, man-made pollutants	Same issues as chlorine except more severe. Chloramine is more persistent and damaging to household items, appliances and pipes and needs more contact time and specialty filtration to filter properly. If in doubt how your municipal district is treating your water or if this is what they will be using in the future, you can't go wrong specifying for chloramine since this unit will be great on either type of water	EWS-CC-1865-7 <i>The EWS Chloramine Spectrum System</i> DWS (6) or RO3 (7)
Hardness	Spots left behind after water dries. Water hardness is comprised of the naturally found calcium and magnesium minerals and not considered a contaminant. Hardness up to a certain amount is only an aesthetic. Most appliance, heater and fixture mfg. have compensated and suggest the proper routine maintenance for the possible buildup. Soaps no longer need lather and all use concentrated forms where less is required. Water spots should be considered like dust in the air, you can not totally eliminate it, and a simple wipe off should be routine. Softeners comprise less than 5% of the total US water products market*** and are the most over discussed non-issue in order to desparately sell softeners. Softeners provide the slippery feeling, water you cannot drink and corrosivity and warranty issues.	EWS-1354 CS-EWS-1354-7000 <i>The EWS Spectrum</i> EWS-CC-1865-7 <i>if also using chloramine</i> TT-1054 (4) CS-TT1054-7000 (5) <i>The Spectrum Soft</i>
Lead	Generally occurring due to older delivery systems and piping	DWS (6) or RO3 (7)
With a few exceptions these are water quality issues and symptoms normally found in well water		
Iron	Metallic taste associated with pink to red color and staining	EWS-1054-P (8)
Manganese	Metallic taste associated with tan to brown/black color and staining	EWS-1054-PH (9)
Acidic Water (low pH)	Blue/Green staining due to corrosivity	
Arsenic and other heavy metals or inorganics	Naturally occurring elements found in ground water that may exceed EPA limits known to have adverse health effects	RO3, RO4, RU500
Tannins	Brownish, tea color or yellow water from naturally decaying vegetation and low or shallow water tables. Aesthetic only and not a contaminant.	No effective single or consistent method
Turbidity or cloudy water	Sediment or sand but could be indicator of high TDS or other issues	Pre-Sediment filter pre or post of other system(s)
Micro-biological Cryptosporidium & giardia	Coliform, e-coli Hard shell parasites	Pre-treat well, safeguard tap water DWS-UV or RO3-UV

Key

Whole Home Filtration **Showroom Series and Professional Series**

- (1) **EWS-1354** The Best Selling System since 1987. Whole home water filtration and physical conditioning of hardness minerals. CWL-1354 system available for whole home filtration only where water hardness is not an issue.
- (2) **CS-EWS-1354-7000 EWS Spectrum** whole home water filtration and physical conditioning of hardness minerals. CWL Spectrum available where water hardness is not an issue.
- (3) **EWS-CC-1865-7 EWS Chloramine Spectrum** whole home water filtration where chloramine is the treatment method used and physical conditioning of hardness minerals. CWL Chloramine Spectrum where water hardness is not an issue.

Softeners

Options in addition to whole home based on customer preference or local water conditions.

- (4) **TT-1054 softener**, ion-exchange twin tank for hot-side or point of entry with soft water loop and bypassed lines. RT-1035 available for limited use and hot-side only. Coordinate, if applicable, to EWS or CWL Series Systems.
- (5) **CS-TT1054-7000 Spectrum Softener**, ion-exchange twin tank for hot-side or point of entry with soft water loop and bypassed lines. Coordinate, if applicable, to other Professional Series Spectrum Systems.

Sink Systems **Options in addition to whole home based on customer preference, need or local water conditions.**

- (6) DWS or DWS-UV Essential Drinking Water Filtration System is redundant to EWS whole home units except for compliance for lead and cysts. UV disinfection available to additionally safeguard for bacterial, viral, e-coli and other microorganisms.
- (7) Reverse Osmosis System is redundant to municipally treated water and EWS whole home units except for compliance for lead and cysts. UV disinfection available to additionally safeguard for bacterial, viral, e-coli and other microorganisms.

Well Water Section

- (8) **EWS-1054-P** iron and manganese removal filtration systems
- (9) **EWS-1054-PH** pH increasing units to be specified based on testing and known pH levels.

*President's Anti-Cancer Panel, Position Paper January 2010, **WQA, The Final Barrier, May 2010, ***Harvard Business Review, Markets Research 2009

ALL FILTRATION PRODUCT PROUDLY MADE & ASSEMBLED IN THE USA



EWS, INC. ENVIRONMENTAL WATER SYSTEMS



RESIDENTIAL WATER FILTRATION

- **EWS WHOLE HOME
CENTRAL WATER FILTRATION
AND CONDITIONING SYSTEMS**
- **CWL WHOLE HOME
CENTRAL WATER FILTRATION SYSTEMS**

ewswater.com

O: 702.256.8182 (M-F 8:30am-4:30pm PST)

F: 702.256.3744

E: customerservice@ewswater.com

Complete Product Booklets and Service Guides for each system is available online and through customer service.

Information includes all schematics, technical information, removal capabilities, how to setup, install & startup each system as well as any troubleshooting and any other information we could think of in order to help you.

Highest Quality Product & Award Winning Customer Service Since 1987

FIND THE RIGHT PRODUCT FOR YOU

Whether your water is hard or soft, treated with chlorine or chloramine, Environmental Water Systems has the right appliance to protect you, your family, and your home. Just a few simple questions will help you determine which appliance is best for you. If you need any help at all, please call EWS Customer Service at 702.256.8182 Monday-Friday 8.30 am - 4.30 pm Pacific Time.

DO YOU HAVE HARD WATER?

YES

Some of us have harder water than others, and EWS generally considers 6 grains (102 ppm or mg/l) of hardness to be on the lower end of hard water. Select YES if you have hard water issues such as excessive spotting or mineral build-up in pipes, faucets and water heaters.

NO

DOES YOUR CITY USE CHLORINE OR CHLORAMINE?

EWS SERIES Whole Home Water Filtration and Conditioning for Hardness Minerals.

DOES YOUR CITY USE CHLORINE OR CHLORAMINE?

CWL SERIES Whole Home Water Filtration for Water Without Hardness Issues.

SELECT BY LINE SIZE.*

CHLORINE

EWS 1354

Model #: EWS-1354
3/4" - 1" main water line. Up to 15 gpm.

EWS 1354 HF

Model #: EWS-1354-HF
1" - 1 1/4" main water line. Up to 22 gpm.

EWS 1354 1 1/2"

Model #: EWS-1354-11/2
1 1/2" main water line. Ideal for larger homes and families. Up to 50 gpm.

NOT SURE ABOUT YOUR LINE SIZE? SELECT:

EWS SPECTRUM

Model #: CS-EWS-1354-7000 Pro Series. Our most versatile unit. Showcased by NAHB. Adjustable for 3/4" - 1 1/2" main water line. Up to 35 gpm.

SELECT BY USAGE.**

CHLORAMINE

EWS CC 1465

Model #: EWS-CC-1465-7
Select this system if you have ALL of the following:**

- 3 bathrooms or less
- 4 people or less
- 1 water heater
- Up to 2 ppm chloramine

EWS CC 1865

Model #: EWS-CC-1865-7
Select this system if you have ANY of the following:**

- 3+ bathrooms
- 4+ people
- 1+ water heater
- 2+ ppm chloramine

About 22% of people have tap water treated with chloramine (a corrosive combination of chlorine and ammonia). Chloramine requires more contact time (vs. chlorine) through a specialized filtration media to effectively filter it out of the water. EWS has designed four systems specifically for handling chloramine, which use our Pro Series valve that accommodates 3/4" - 1 1/2" main water lines up to 35 gpm. **Not sure if you have chloramine? Call your water district or EWS Customer Service at 702.256.8182 for friendly assistance.

SELECT BY USAGE.**

CHLORAMINE

CWL CC 1465

Model #: CWL-CC-1465-7
Select this system if you have ALL of the following:**

- 3 bathrooms or less
- 4 people or less
- 1 water heater
- Up to 2 ppm chloramine

CWL CC 1865

Model #: CWL-CC-1865-7
Select this system if you have ANY of the following:**

- 3+ bathrooms
- 4+ people
- 1+ water heater
- 2+ ppm chloramine

SELECT BY LINE SIZE.*

CHLORINE

CWL 1354

Model #: CWL-1354
3/4" - 1" main water line. Up to 15 gpm.

CWL 1354 HF

Model #: CWL-1354-HF
1" - 1 1/4" main water line. Up to 22 gpm.

CWL 1354 1 1/2"

Model #: CWL-1354-11/2
1 1/2" main water line. Ideal for larger homes and families. Up to 50 gpm.

NOT SURE ABOUT YOUR LINE SIZE? SELECT:

CWL SPECTRUM

Model #: CS-CWL-1354-7000 Pro Series. Our most versatile unit. Showcased by NAHB. Adjustable for 3/4" - 1 1/2" main water line. Up to 35 gpm.

STOP

Are You On Well Water?

If you are on private or community well water, you need information to determine any water issues and their solutions. Well water requires complete and independent testing. Call EWS Customer Service at 702.256.8182 or visit EWSWATER.COM for more information.

*A 3/4" - 1" main water line is typical. Larger homes may have 1 1/4" or 1 1/2" that require larger valves to meet flow rate and usage. **Unsure of your line size?** Specify the EWS or CWL Spectrum, or visit EWSWATER.COM and click Resources > How to Determine Your Line Size, or ask your builder or plumber.

No-Lead Compliant and Meets or Exceeds NSF Standard 42

EWS Series - Whole Home Water Filtration & Conditioning

EWS-1354



EWS-1354-11/2"



EWS-1035 LTD



EWS Series - Whole Home Water Filtration & Conditioning
Water filtration to the entire home and the physical conditioning of hardness minerals

EWS Series System* Model No.	Installed Main Line Size	Service Flow Rate	Replacement Filtration Up to every 10 years*
EWS-1354 The most popular EWS System sold since 1987	3/4" - 1"	up to 15 gpm	Replacement Kit Only: ICN/GAC1354 Complete Tank w/ Kit: T-ICN/GAC1354
EWS-1354-HF	1" - 1 1/4"	up to 22 gpm	Replacement Kit Only: ICN/GAC1354-HF Complete Tank w/ Kit: T-ICN/GAC1354-HF
EWS-1354-11/2" The 11/2" 50 gpm system	1 1/2"	up to 50 gpm	Replacement Kit Only: ICN/GAC1354-11/2 Complete Tank w/ Kit: T-ICN/GAC1354-11/2
EWS-1054 For smaller homes with softer water (less than 15 grains)	3/4" - 1"	up to 15 gpm	Replacement Kit Only: ICN/GAC1054 Complete Tank w/ Kit: T-ICN/GAC1054
EWS-1035 LTD The "condo" unit for limited space	3/4" - 1"	up to 15 gpm	Replacement Kit Only: ICN/GAC1035 Complete Tank w/ Kit: T-ICN/GAC1035
EWS-1665 See Commercial Section for larger systems	2"	up to 100 gpm	Replacement Kit Only: ICN/GAC1665 Complete Tank w/ Kit: T-ICN/GAC1665

Please see "FIND THE RIGHT PRODUCT FOR YOU" to assist you with the proper specification.

PROFESSIONAL EWS SERIES

CS-EWS-1354-7000 (EWS Spectrum)	3/4" - 1 1/2"	up to 35 gpm	See Professional Series Section
---------------------------------	---------------	--------------	---------------------------------

CHLORAMINE EWS SERIES SYSTEMS

EWS-CC-1465-7	3/4" - 1 1/2"	up to 35 gpm	See Professional Series Section
EWS-CC-1865-7	3/4" - 1 1/2"	up to 35 gpm	See Professional Series Section

CAUTION, PLEASE READ FOR PROPER SPECIFICATION:

Applicable to most municipally-treated water. Well water needs to be properly and completely tested before the specification of any filtration and treatment system(s).

Water being treated with Chloramine (combination of chlorine and ammonia) will exhaust EWS/CWL Series filter media prematurely. EWS/CWL Chloramine Spectrum Series is the correct specification for municipal water using this method of disinfection. Useful life based on proper specification, application, installation, usage and local water conditions.

Any EWS/CWL System can be combined with EWS softeners (hot-side only) and/or additional Essential sink filtration product based on consumer preference, need, and/or based on the local water conditions.

Complete information and specifications are available on every product in the EWS Product Catalog and is available upon request through EWS Representation, EWS Customer Service or online @ www.ewswater.com.

ALL FILTRATION PRODUCT PROUDLY MADE & ASSEMBLED IN THE USA


EWS WHOLE HOME

No-Lead Compliant and Meets or Exceeds NSF Standard 42

CWL Series - Whole Home Water Filtration Water filtration to the entire home where water hardness is not an issue			
CWL Series System* Model No.	Installed Main Line Size	Service Flow Rate	Replacement Filtration Up to every 10 years*
CWL-1354 The most popular CWL System sold since 1987	3/4" - 1"	up to 15 gpm	Replacement Kit Only: M/GAC1354 Complete Tank w/ Kit: T-M/GAC1354
CWL-1354-HF	1" - 1 1/4"	up to 22 gpm	Replacement Kit Only: M/GAC1354-HF Complete Tank w/ Kit: T-M/GAC1354-HF
CWL-1354-11/2" The 11/2" 50 gpm system	1 1/2"	up to 50 gpm	Replacement Kit Only: M/GAC1354-11/2 Complete Tank w/ Kit: T-M/GAC1354-11/2
CWL-1054 For smaller homes (3 baths or less, 2 people, one heater)	3/4" - 1"	up to 15 gpm	Replacement Kit Only: M/GAC1054 Complete Tank w/ Kit: T-M/GAC1054
CWL-1035 LTD The "condo" unit for limited space	3/4" - 1"	up to 15 gpm	Replacement Kit Only: M/GAC1035 Complete Tank w/ Kit: T-M/GAC1035
ECWL-1665 See Commercial Section for larger systems	2"	up to 100 gpm	Replacement Kit Only: M/GAC1665 Complete Tank w/ Kit: T-M/GAC1665



CWL-1354

CWL-1354-11/2"

CWL-1035 LTD

CWL Series - Whole Home Water Filtration

Please see "FIND THE RIGHT PRODUCT FOR YOU" to assist you with the proper specification.

PROFESSIONAL CWL SERIES

CS-CWL-1354-7000 (CWL Spectrum)	3/4" - 1 1/2"	up to 35 gpm	See Professional Series Section
---------------------------------	---------------	--------------	---------------------------------

CHLORAMINE CWL SERIES SYSTEMS

CWL-CC-1465-7	3/4" - 1 1/2"	up to 35 gpm	See Professional Series Section
CWL-CC-1865-7	3/4" - 1 1/2"	up to 35 gpm	See Professional Series Section

CAUTION, PLEASE READ FOR PROPER SPECIFICATION:

Applicable to most municipally-treated water. Well water needs to be properly and completely tested before the specification of any filtration and treatment system(s).

Water being treated with Chloramine (combination of chlorine and ammonia) will exhaust EWS/CWL Series filter media prematurely. EWS/CWL Chloramine Spectrum Series is the correct specification for municipal water using this method of disinfection. Useful life based on proper specification, application, installation, usage and local water conditions.

Any EWS/CWL System can be combined with EWS softeners (hot-side only) and/or additional Essential sink filtration product based on consumer preference, need, and/or based on the local water conditions.

 Complete information and specifications are available on every product in the EWS Product Catalog and is available upon request through EWS Representation, EWS Customer Service or online @ www.ewswater.com.

ALL FILTRATION PRODUCT PROUDLY MADE & ASSEMBLED IN THE USA




ENVIRONMENTAL WATER SYSTEMS®
The Leader in Whole Home Water Filtration Since 1987.

All Product Tearsheets Available Online @ ewswater.com

EWS & CWL Showroom Series

Engineered with the highest quality materials. Made in the USA. Leading the industry since 1987.

- Filter all the water in your home with one system.
- World-class, hassle-free EWS quality and performance.
- Trusted by hospitals, health care centers, military, and hundreds of thousands of private homes worldwide.
- Inhibits hard water build-up in pipes and on surfaces.**
- Absolutely no salts, chlorides, metal resins, or chemicals.
- Quick and easy install, just like a water heater.
- Made in the USA, meets or exceeds all compliances.
- Protects you and your family from chlorine, THMs, VOCs, pesticides, and more than 80,000 chemicals in tap water.†

Showcased by  **NAHB**
NATIONAL ASSOCIATION
OF HOME BUILDERS

Chlorine (a common disinfectant used in USA tap water) and its byproducts are known carcinogens. Drinking them, or inhaling and absorbing them while showering or bathing, is not recommended. The New York State Dept. of Health and President's Cancer Panel recommend water filtration to reduce or eliminate our exposure to these substances.

***EWS Filtration & Conditioning Series only.*



AN EASY WAY TO GET HEALTHY.

We absorb more chlorine in a 10 minute shower than if we drank a gallon of unfiltered tap water. With the **SHOWROOM SERIES**, not only can you drink delicious filtered water at any sink, but it prevents you and your family from absorbing and inhaling carcinogenic chlorine and VOCs while showering and bathing. Enjoy better skin, hair, and overall health.



HASSLE-FREE ENJOYMENT.

No costly monthly bottle delivery. No frequent filter replacements. No taking up valuable refrigerator or countertop space. The **SHOWROOM SERIES** is a self-cleaning, high quality, USA-made appliance. The only maintenance is a simple filtration media replacement once up to every 10 years.‡



REAL PROTECTION FOR YOU, YOUR FAMILY, AND YOUR HOME.

The **SHOWROOM SERIES** is designed with our proprietary high-grade, biodegradable filtration media and is available in three digital valve sizes to suit all plumbing lines. Effectively protects you from chlorine, THMs, and 80,000+ chemicals commonly found in tap water.† The result is truly clean water you can trust.



HELP FOR HARD WATER.

The **EWS SERIES** inhibits scale build-up in pipes and water heaters, makes it easier to wipe off water spots, and enables you to use less soap – all without salts, chemicals, or brine discharge.

If you do not have hard water issues, please select a **CWL SERIES** for the same high-end filtration without hard water treatment.

TECHNICAL INFORMATION

EWS & CWL SHOWROOM SERIES WHOLE HOME FILTRATION APPLIANCES

EWS SERIES: EWS-1035-LTD, EWS-1054, EWS-1354, EWS-1354-HF, and EWS-1354-11/2

CWL SERIES: CWL-1035-LTD, CWL-1054, CWL-1354, CWL-1354-HF, and CWL-1354-11/2

All Product Tearsheets Available Online @ ewswater.com

SYSTEM SPECIFICATIONS

OPERATION TEMPERATURE: Maximum 100° F (38° C) / Minimum 40° F (4° C) **OPERATION PRESSURE:** Maximum 75 psi / Minimum 30 psi
SYSTEM FLOW RATE: Model #s 1035, 1054, and 1354 up to 15 gpm. Model # 1354-HF up to 22 gpm. Model # 1354-11/2 up to 50 gpm.
 Do not use with water that is microbiologically unsafe or of unknown quality without adequate disinfection before or after the system.
 Replace your filtration media up to every 10 years or as needed (do not exceed 10 years). Install in cold water feed applications only. Install in compliance with local and state regulations.

All installation instructions, service manuals, technical and product information is available online at www.EWSWATER.com

EWS MODEL #	REPLACEMENT ITEM #	CWL MODEL #	REPLACEMENT ITEM #	FILTRATION MEDIA SERVICE LIFE: UP TO 10 YEARS.* REPLACE YOUR FILTRATION AS NEEDED. DO NOT EXCEED 10 YEARS.
EWS-1035-LTD	T-ICN/GAC1035	CWL-1035-LTD	T-M/GAC1035	
EWS-1054	T-ICN/GAC1054	CWL-1054	T-M/GAC1054	
EWS-1354	T-ICN/GAC1354	CWL-1354	T-M/GAC1354	
EWS-1354-HF	T-ICN/GAC1354-HF	CWL-1354-HF	T-M/GAC1354-HF	
EWS-1354-11/2	T-ICN/GAC1354-11/2	CWL-1354-11/2	T-M/GAC1354-11/2	

FILTER SPECIFICATIONS

HIGHEST GRADE GRANULAR ACTIVATED CARBON MEDIA

DESCRIPTION: 33 lbs./1 cu. ft. (EWS/CWL 1035), 50 lbs./1.5 cu. ft. (EWS/CWL 1054), or 85 lbs./2.5 cu. ft. (all EWS/CWL 1354 models) of the highest grade carbon available, designed for the removal of chlorine and VOCs. Iodine rating minimum of 1200.

PURPOSE: Filters out chlorine, VOCs, THMs, and particulates down to 20 microns (smaller than a human hair).

FEATURES & BENEFITS: Provides truly clean, safe water for drinking, cooking, showering, bathing, absorption, and inhalation.

CONSTRUCTION: 100% pure proprietary blend of biodegradable and compostable activated carbon. No fillers or binders. No chemical additives or metal resins. Meets FDA requirements for all food and beverage contact. Meets or exceeds NSF compliance Standard 42.

SERVICE LIFE: 10 years‡ **MAX. FLOW:** 50 GPM / 189 LPM **MAX. PRESSURE:** 75 PSIG / 8.6 Bar **TEMP. RANGE:** 40-100° F / 4-38° C

ICN MODULE (EWS SERIES ONLY)

DESCRIPTION: Full-flow riser with **one** (EWS 1035, 1054) or **two** (all EWS 1354 models) ICN conditioners.

PURPOSE: Inhibit hardness issues. 1035/1054 models effective up to 15 grains of hardness. 1354 models effective up to 30 grains of hardness.

FEATURES & BENEFITS: Prevents scale build-up in pipes and water heaters, and makes it easier to wipe up water spotting.

CONSTRUCTION: Riser manifold is food-grade PVC. EWS exclusively engineered ICN is copper cell comprised of charged dissimilar metals.

SERVICE LIFE: 10 years‡ **MAX. FLOW:** 50 GPM / 189 LPM **MAX. PRESSURE:** 75 PSIG / 8.6 Bar **TEMP. RANGE:** 40-100° F / 4-38° C

‡Filter service life is based on local water conditions and usage.

SHIPPING SIZE: Pallet of 1-18" x 18" x 66" box

EWS/CWL-1035 WEIGHT: 60 lbs.

EWS/CWL-1054 WEIGHT: 125 lbs.

EWS/CWL-1354 WEIGHT: 155 lbs.

EWS/CWL-1035 SIZE: 10" D x 44" H

EWS/CWL-1054 SIZE: 10" D x 63" H

EWS/CWL-1354 SIZE: 13" D x 63" H

¹ These substances may or may not be in your water. Please ensure this is the correct system for your needs. Please see included instructions for proper installation and usage.

Fully Compliant with California No-Lead Standards.

The EWS & CWL SERIES comes fully assembled and comes with:

assembled tank with ICN riser manifold (EWS only) and filtration media inside, digital valvehead, built-in bypass, 24v transformer, and complete service guide. All HF and 1 1/2" systems need a plumber-installed bypass.

PRO SERIES VS. SHOWROOM SERIES



- Adjustable valvehead suits 3/4" - 1 1/2" lines
- Up to 35 gpm
- White, thick plastic cover
- 85 lbs. of our proprietary, highest-grade, granular activated carbon
- Installs easily, just like a water heater

**Larger units specific to 2"+ lines are available. Showroom Series only.



- Specific to 1", 1 1/4", and 1 1/2" lines**
- Up to 15, 22, or 50 gpm
- Real stainless steel cover
- Up to 85 lbs. of our proprietary, highest-grade, granular activated carbon
- Installs easily, just like a water heater

DOES YOUR CITY USE CHLORAMINE?

About 22% of people have tap water treated with chloramine (a corrosive, toxic combination of chlorine and ammonia), which requires lengthy contact time through large quantities of specialized filtration media to effectively filter it out of the water. EWS Chloramine Series are the first and only systems engineered specifically for eliminating chloramine. **Not sure if you have chloramine?** Call your water district or EWS Customer Service at 702.256.8182 for assistance.



CALL EWS CUSTOMER SERVICE: 702.256.8182 (MONDAY-FRIDAY 8.30 AM-4.30 PM PACIFIC TIME)

FAX: 702.256.3744 EMAIL: CUSTOMERSERVICE@EWSWATER.COM

WWW.EWSWATER.COM

EWS Series Replacement ICN & Filtration Media Kits

High-Grade Proprietary Carbon Filtration Media & ICN Replacements Properly Sized per EWS System

Point of Entry ICN & Filtration Media Kits

ICN Conditioner(s) & Proprietary Carbon Filtration Media Properly Sized per EWS System

Media/ICN Kit Model No.	Filter/ICN Type	Used with:
ICN/GAC1035	1-ICN & .75 GAC Media	EWS-1035-LTD
ICN/GAC1054	1-ICN & 1.5 GAC Media	EWS-1054
ICN/GAC1354*	2-ICN's & 2.5 GAC Media	¹ EWS-1354
ICN/GAC1354-HF*	2-ICN's & 2.5 GAC Media	¹ EWS-1354-HF
ICN/GAC1354-11/2"	2-ICN's & 2.5 GAC Media	EWS-1354-11/2"
ICN/GAC1665	3-ICN's & 4.0 GAC Media	EWS-1665

¹All Pre-2000 EWS-1354 and EWS-1354-HF units REQUIRE new tanks to accommodate ICN Riser Manifold

Replace up to every 10 years*

Completed Assembled ICN & Filtration Media Kits within Tanks

The Convenience of a Completed Assembled Tank with Correct Kit per EWS System

Tank w/Media/ICN Kit Model No.	Filter/ICN Type	Used with:
T-ICN/GAC1035	1-ICN & .75 GAC Media	EWS-1035-LTD
T-ICN/GAC1054	1-ICN & 1.5 GAC Media	EWS-1054
T-ICN/GAC1354	2-ICN's & 2.5 GAC Media	EWS-1354
T-ICN/GAC1354-HF	2-ICN's & 2.5 GAC Media	EWS-1354-HF
T-ICN/GAC1354-11/2"	2-ICN's & 2.5 GAC Media	EWS-1354-11/2"
T-ICN/GAC1665	3-ICN's & 4.0 GAC Media	EWS-1665

Replace up to every 10 years*

***CAUTION, PLEASE READ:**

All filter replacement (ICN replacement, EWS Series only) is based on local water conditions and usage. Always replace as needed and not beyond recommended time limit. Applicable to most municipally-treated water. Well water needs to be properly and completely tested before the specification of any filtration and treatment system(s). Useful life based on proper specification, application, installation, usage and local water conditions.

Water being treated with Chloramine (combination of chlorine and ammonia) will exhaust EWS/CWL Series filter media prematurely. EWS/CWL Chloramine Spectrum Series is the correct specification for municipal water using this method of disinfection.

All replacement kits come with full instructions for easy replacement. Instructions are also available online at ewswater.com or allow EWS' award-winning customer service to answer any of your questions.

CWL Series Replacement Filtration Media Kits

High-Grade Proprietary Carbon Filtration Media Properly Sized per CWL System

Point of Entry Filtration Media Kits

High-Grade Proprietary Carbon Filtration Media Properly Sized per CWL System

Media Kit Model No.	Filter Type	Used with:
M/GAC1035	.75 GAC Media	CWL-1035-LTD
M/GAC1054	1.5 GAC Media	CWL-1054
M/GAC1354	2.5 GAC Media	CWL-1354, -HF, -11/2"
M/GAC1665	4.0 GAC Media	CWL-1665

Replace up to every 10 years*

Completed Assembled Filtration Media Kits within Tanks

The Convenience of a Completed Assembled Tank with Correct Kit per CWL System

Media Kit Model No.	Filter Type	Used with:
T-M/GAC1035	.75 GAC Media	CWL-1035-LTD
T-M/GAC1054	1.5 GAC Media	CWL-1054
T-M/GAC1354	2.5 GAC Media	CWL-1354
T-M/GAC1354-HF	2.5 GAC Media	CWL-1354-HF
T-M/GAC1354-11/2"	2.5 GAC Media	CWL-1354-11/2"
T-M/GAC1665	4.0 GAC Media	CWL-1665

Replace up to every 10 years*

ALL FILTRATION PRODUCT PROUDLY MADE & ASSEMBLED IN THE USA


All Systems: tank, valve and all contents delivered fully assembled with the exception of 1665 and larger systems.



- DTV Valve** (front view)
Not pictured: Bypass Valve to the rear of the Valve.
- Electrical:** 24 volt transformer uses the power of a doorbell
- Drain:** 1/2" (3/4" -HF, 1 1/2" and larger valves) can go anywhere.
Just filtered water and not a brine. Can be recycled
- Freeboard:** Space allows media space to lift during backwash.
- Tank:** Non-corrosive, seamless, one-piece blow molded with tough epoxy and fiberglass outer laminate. Note: actual color of tank may vary.
- Outer Cover:** Stainless cover and the coordinating plastic dome are strictly aesthetic and are non-functional parts
- Conditioning (EWS Series Only):** ICN Riser Manifold contains two ICN conditioners (1354) that catalytically suspend hardness minerals so they inhibit adhesion to surfaces: Note: CWL Series does not contain this part.
- Riser:** Specialty PVC tubing food & beverage compliant for distribution of filtered water flow up through the riser and out to the home or water down through the riser to lift and properly backwash in order to self clean filtration media
- Filtration:** 2.5 cubic feet or 85 pounds (1354 systems) of EWS proprietary high-grade granular activated carbon.*
- Lower Riser Screen and Underbed:** Maintains a closed system where media does not escape into home plumbing during normal operation. The underbed provides greater water distribution during filtration and backwash.
- Self Leveling Base:** Adjusts to installed surface

Factory pre-set to backwash is every 6 days.

EWS improvements in our high-grade filtration media and systems saves 60%

Filtration Media and ICN Conditioner(s) (EWS Series only) need replacement up to every 10 years*



Whole Home Filtration System - Schematic

For Illustration Purposes Only: Cut-away of EWS-1354

Pictured: EWS-1354

EWS (CWL) ¹ Series System Model #	Filter Media ² cubic feet / weight (lbs)	ICN quantity EWS Only	Conditions ³ Hardness up to	Installed Main Line Size	Service Flow Rates GPM	Backwash Flow Rates GPM	Bypass Included or Install Needed	Install Size ⁴ H x W x D
EWS-1354	2.5 / 85	2	30 grains	3/4" to 1"	15	7	included	62"x13"x18"
EWS-1354-HF	2.5 / 85	2	30 grains	1 1/4"	22	7	plumber install	64"x13"x22"
EWS-1354-11/2"	2.5 / 85	2	30 grains	1 1/2"	50	10	plumber install	64"x13"x22"
EWS-1054	1.5 / 50	1	15 grains	3/4" to 1"	15	4	included	62"x10"x15"
EWS-1035 LTD	0.75 / 33	1	15 grains	3/4" to 1"	15	4	included	44"x10"x15"
EWS-1665	4.0 / 135	3	30 grains	2"	100	10	plumber install	77"x16"x24"
CS-EWS-1354-7000 Pro Series - EWS Spectrum	2.5 / 85	2	30 grains	3/4" up to 1 1/2"	up to 35	7	included	62"x13"x20"

¹ EWS and CWL models are the same with the exception that the CWL Series does not condition hardness minerals in water and does not contain the ICN conditioners. All other specifications, information and installation are the same.

² Applicable to most municipally-treated water. Water being treated with Chloramine (combination of chlorine and ammonia) will exhaust this filter media prematurely. EWS Chloramine Spectrum Series is the correct specification and can be found in the Professional Series Section. Useful life based on proper specification, application, installation, usage and local water conditions.

³ Calculate Hardness: If you get a number in PPM (parts per million) or Mg/L (milligrams per liter) simply divide the number by 17.1 to calculate the grains (ppg or grains per gallon) of hardness.

NOTE: Water hardness is comprised of the naturally found calcium and magnesium minerals and not considered a contaminant. Hardness up to a certain amount is only an aesthetic. Most appliances, heaters and fixtures have compensated and suggest the proper routine maintenance for the possible buildup. Soaps no longer need lather and all use concentrated forms where less is required. Water spots should be considered like dust in the air, you can not totally eliminate and a simple wipe off should be routine.

⁴ Installation size may vary. The use of flexible stainless piping is highly recommended. This may prevent pressure issues, eliminates the cost of unions on installed bypasses, lowers labor costs and require less clearance. See Service Guide for additional information.

Questions...? Please see "FIND THE RIGHT PRODUCT FOR YOU" to assist you with the proper specification.

Information on specifications are available in complete information booklets on this and every product in the EWS Product Catalog, as well as, full color EWS Whole Home Water Filtration Brochures, Product Tearsheets and Setup, Installation and Service Guides which are available upon request through EWS Representation, EWS Customer Service or online @ www.ewswater.com.

WARNING: Do not use with water that is microbiologically unsafe or of unknown quality without adequate disinfection before the system.
CAUTION: Well water needs to be properly and completely tested before the specification of any filtration and treatment system(s).

NOTE: Any EWS System can be combined with EWS softeners (preferred hot-side only) and/or additional EWS sink filtration product based on consumer preference, need, and/or based on the local water conditions.

All EWS product, filters, parts and components can be recycled. All filtration media (excluding softener resin) on all EWS whole home filtration systems are bio-degradable.

ALL FILTRATION PRODUCT PROUDLY MADE & ASSEMBLED IN THE USA



All granular activated carbon media for all EWS and CWL Whole Home Filtration Systems

Versatility of Process

Filters allow the bonding of single or multiple types of extremely small sized particles onto a single support structure. For example, fine powdered lead sorbents bonded onto larger carbon support structures. This unique feature enables EWS to produce complex composite filtration media that can meet the requirements of complicated water contamination problems.

Increased Surface Area

The ability to bond extremely fine powdered media onto larger support particles results in increased surface area and improved kinetic efficiency. Instead of having one large particle available for filtration purposes, EWS technology makes possible the bonding of thousands of fine particles onto the surface of the larger support particles which greatly increases the surface area of the composite media.

Enhanced Kinetics

The process of increasing the surface area of a media enhances the adsorption kinetics and catalytic effects of that media. Consequently, in all EWS sink filtration product, EWS technology allows us to use less media and still achieve similar or superior filtration results. As a result, with this technology, we are now able to design smaller, more aesthetically appealing filtration devices with excellent performance characteristics. In all EWS whole home water filtration systems, this EWS technology allows us to create greater filtration capacities and with more longevity.

Improved Performance

EWS carbon media for cartridges, blocks or loose media has improved catalytic and adsorption characteristics because of the increase in surface area and kinetic activity. Test results have proven that EWS composite adsorption products exceed the performance characteristics of simple, one component, granular based products.

Standard 42 Aesthetic Effects

Parameter	US EPA MCL	Influent Challenge	Effluent Average	Effluent Maximum	Percent Reduction Average	Percent Reduction Minimum
Chlorine	-	2.0 mg/L	0.03 mg/L	0.06 mg/L	98.5	97

Note regarding NSF compliant testing: The challenge level of chlorine is much higher than found in treated tap water



Top Claims - The Myth and The Reality

Claim: Multi-media tanks or tanks with multiple types of filtration media filter for chlorine, chloramine*, bacterial removal, pH balancing, water polishing and other claims.

Reality:

First, effective bacterial removal is only achieved through ultraviolet, ozone or chemical disinfectant. Bacteriostatic filters using silver nitrate or other metal resins only protect poor filtration media from internal bacteria growth and not the consumer against bacteria in the water.

Second, when more than one media is incorporated into one tank, there is not enough of any one media to effectively remove the contaminants as claimed. Each media has a specific amount of material needed per tank size and flow rate according to their Material Safety Data Sheets (MSDS) in order to actually be effective. For example, while marketing all the buzzwords to the consumer where 3 or up to 5 different media is used, the tank would have to be up to 20 feet tall to accommodate all the media properly installed. Result, the system does nothing but fool the consumer for taste over a brief period. **EWS uses the highest grade of specialty blended proprietary carbon media available.**

Claim: We are green and water conservative because our systems do not need to backwash.

Reality:

Remember the Material Safety Data Sheets mentioned above for each filtration media? Oddly enough they all have requirements for backwashing filtration media to effectively filter, maintain proper filtration surface area and to prevent any packing, channeling and bacteria growth. Not backwashing media results in poor results and costly and premature replacement. Any claims are bold faced lies dressed up nicely as marketing - the only loser is the consumer. **EWS effectively backwashes to maintain effective filtration and longevity. Backwash water usage is adjustable using our advanced valving and the water (which is not a brine) is usable for landscaping, pools and other needs.**

Claim: Sure our units also remove chloramine*.

Reality:

Making this claim is dangerous. Chloramine requires a different and very specific carbon media and the proper amount for proper contact time. Most filters may remove the chloramine for a short time (taste only) until they become incapable of removing the entire compound. multi-media filters, refrigerator filters, pitcher, carafe and faucet filters simply reduce the chlorine and allow the ammonia portion of the chloramine compound to shear off and render the filter useless as a foul or bad taste becomes evident and are limited by their filtration capacities. Therefore, similar to bottled water, taste becomes the actual consumer standard and not the health of the water or actual contaminants removed. **EWS has developed an advanced media and systems to effectively remove chloramine (which also work great on chlorine and VOCs)**

*Chloramine is a compound comprised of chlorine and ammonia. For the removal of this compound to be effective, carbon must be able to have catalytic and kinetic capabilities of drawing the chlorine and attached ammonia onto the surface area of the carbon and drawing it into the interior surface area of the carbon granule. Greater surface area and contact time is necessary for adequate removal over the life of the filter cartridge.

Claim: Small tanks or cartridges in larger housings are whole home filtration.

Reality:

At bare minimum, a typical home requires 10 gallons per minute (gpm) of available water to supply enough flow to the home. Small tanks that appear to be less money have flow rates of less than 10 gpm will need more than one unit to be effective for a homes' use. The other issue as stated above, there is not enough filtration media or contact time to effectively do anything but fool the consumer that taste equates to health. **EWS wants you to be informed not sold. EWS wants to provide you a healthy water environment and not one that may simply taste good.**

ALL FILTRATION PRODUCT PROUDLY MADE & ASSEMBLED IN THE USA



All EWS advanced carbon filtration media meets or complies with NSF Standard 42 for reduction of Chlorine and other Volatile Organic Compounds. The media utilizes a high performance advanced kinetic and catalytic granular activated carbon which provides exceptional filtration capacity and effectively reduces by an average of 98.5% chlorine, voc's, bad taste and odor in drinking water.

About Municipally-Treated Water

Municipal water is heavily regulated, monitored, tested, filtered and treated. Most taste, quality and health issues are directly related to the treatment or disinfection of the water and their by-products, as well as man-made pollutants common to most water (see reference #'s below generally between 3 to 5). Issues with heavy metals and primary contaminants (see reference #'s below generally between 0 to 2) are highly regulated and effectively treated by water utilities. These contaminants are rarely an issue with water quality.

How to Use the (GAC) Carbon Filtration Reference Chart

Below is a simple reference chart to give some perspective as to GAC's capabilities with various substances. Some items are heavy metals and inorganics, while others are VOC's (volatile organic compounds), some of which are man-made pollutants. Still other items, such as hardness, are not even considered contaminants. In general, GAC is very economical and a great complement to municipally-treated water without the disadvantages of more aggressive filtration. GAC is used in all filtration due to its removal capacities. Know your water to select the correct product for you, your family and your home.

Acetaldehyde	4	Emulsions	2	Lead	3	Precipitated Sulfur	2
Acetic Acid	3	Ethyl Acetate	5	Lime	0	Propioic Acid	4
Acetone	4	Ethyl Acrylate	5	Mercaptans	4	Propionaldehyde	3
Alcohols	4	Ethyl Alcohol	4	Metal Salts	1	Propyl Acetate	4
Alkalinity	1	Ethyl Amine	4	Methyl Acetate	4	Propyl Alcohol	4
Amines	3	Ethyl Chloride	4	Methyl Alcohol	4	Propyl Chloride	4
Ammonia	3	Ethyl Ether	4	Methyl Bromide	5	Radon	4
Amyl Acetate	5	Fertilizers	1	Methyl Chloride	4	Rubber Hose Taste	5
Amyl Alcohol	5	Fluorides	2	Methyl Ethyl Ketone	5	Seawater	1
Antifreeze	4	Formaldehyde	2	Naphtha	5	Sediment	2
Arsenic	1	Gasoline	5	Nitrates	0	Soap	3
Benzene	5	Glycols	5	Nitric Acid	3	Sodium Hypochlorite	5
Bleach	5	Hardness	0	Nitrobenzene	5	Soluble Iron	2
Boron	1	Heavy Metals	3	Nitrotoluene	5	Solvents	4
Butly Alcohol	5	Herbicides	5	Odors (General)	5	Sulfuric Acid	1
Butly Acetate	5	Hydrogen Bromide	2	Oil - Dissolved	5	Sulphonated Oils	4
Calcium Hypochlorite	5	Hydrogen Chloride	1	Oil - Suspended	2	Suspended Matter	2
Carbon Dioxide	0	Hydrogen Fluoride	1	Organic Acids	4	Tannins	4
Chloral	5	Hydrogen Iodide	2	Organic Esters	5	Tar Emulsion	4
Chloramine	4	Hydrogen Peroxide	5	Organic Salts	4	Tartaric Acid	4
Chloroform	5	Hydrogen Selenide	3	Oxalic Acid	5	Taste (DI Water)	4
Chlorine	5	Hydrogen Sulfide	3	Oxygen	5	Taste (From Organics)	4
Clorobenzene	5	Hydrochlorous Acid	5	Ozone	4	THM's	5
Chlorophenol	5	Inorganic Acids	1	PCB's	5	Toluene	5
Chlorophyll	4	Inorganic Chemicals	1	Pesticides	5	Toluidine	5
Citric Acid	4	Insecticides	5	Phenol	5	Trichlorethylene	5
Cresol	5	Iodine	5	Phosphates	0	Turpentine	5
Defoliant	5	Isopropyl Acetate	5	Plastic Taste	5	Urine	2
Detergents	3	Isopropyl Alcohol	5	Plating Wastes	3	Vinegar	3
Diesel Fuel	5	Ketones	5	Potassium Permanganate	4	Xanthophyll	4
Dyes	5	Lactic Acid	4	Precipitated Iron	2	Xylene	5

KEY TO THE ABOVE LIST FOR CARBON FILTRATION:

5 - EXCELLENT: Proven Application **4 - VERY GOOD:** Proven Application **3 - GOOD:** Very Acceptable Result
2 - FAIR: limited application **1 - POOR:** not a recommended application (See RO) **0 - Not applicable** (See RO)

- Carbon Block technology has additional filtration capabilities and is the last stage in all EWS Essential Drinking Water Systems. See additional information on EWS Essential Drinking Water Systems (model #'s DWS or RO3).
- UV Disinfection for greater safeguards (DWS-UV, optional with Reverse Osmosis). See additional information.
- To prevent the absorption and inhalation of chlorine, chloramine, VOCs, by-products and pollutants. See CWL or EWS Whole Home Systems for GAC filtration to the entire home for bathing, showering and all uses.

ALL FILTRATION PRODUCT PROUDLY MADE & ASSEMBLED IN THE USA



ALL FILTRATION PRODUCT PROUDLY MADE & ASSEMBLED IN THE USA



EWS, INC. ENVIRONMENTAL WATER SYSTEMS



RESIDENTIAL WATER FILTRATION

- **SOFTENER SYSTEMS**

ewswater.com

O: 702.256.8182 (M-F 8:30am-4:30pm PST)

F: 702.256.3744

E: customerservice@ewswater.com

Complete Product Booklets and Service Guides for each system is available online and through customer service.

Information includes all schematics, technical information, removal capabilities, how to setup, install & startup each system as well as any troubleshooting and any other information we could think of in order to help you.

Highest Quality Product & Award Winning Customer Service Since 1987

Water Softening Options

In addition to EWS Central Water Filtration, and used in only 9% of all applications, the option of salt softening should be installed to the hot-side only. This restricts the harmful use of the softener to the hot water only and reduces the environmental impact due to the brine discharge.

Salt (Sodium or Potassium Chloride) Softening

If you prefer the “slippery feeling” of softened water, EWS Central Water with a softener option is best for you. Softeners strictly soften the water and are not filtration systems. The softening process (ion exchange) substitutes naturally found calcium and magnesium minerals for sodium or potassium chloride. Soft water must avoid the cold/drinking side of any sink, wet bar, ice maker/refrigerator, and hose bibs. Softener trade-offs and disadvantages are many, and door-to-door salesmen, local water dealers and the misinformed can provide skewed or incorrect portrayals of what softened water is all about.

All EWS softeners have digital metered valves and even though we generally advise against their use, we produce some of the best and most efficient softeners in the industry.

***Restrictions may apply to softener usage and discharge. Softeners may effect and/or void warranties on fixtures and finishes, pools, spas, appliances, and certain household and commercial devices.**

Any EWS Whole Home Water Filtration System can be combined with EWS softeners (preferred hot-side only) and/or additional EWS Essential sink filtration product based on consumer preference, need, and/or based on the local water conditions.

Please see “FIND THE RIGHT PRODUCT FOR YOU” to assist you with the proper specification.



Pictured:
TT1354-11/2”

ALL FILTRATION PRODUCT PROUDLY MADE & ASSEMBLED IN THE USA



Softener Series

Ion-Exchange, Salt (sodium or potassium chloride) Softening
Not a Drinking/Filtration System



RT1035

Softener Series System Model No.	Installed Main Line Size	Service Flow Rate	Replacement Resin Up to 5 years*
Cabinet Style			
RT1035 Smaller home and usage, perfect for hot-side only application	3/4" - 1"	up to 12 gpm	RESIN1.0

Softener Series



TT1054

Softener Series System Model No.	Installed Main Line Size	Service Flow Rate	Replacement Resin Up to 5 years*
Twin Tank Style with Separate Brine Tank			
TT1054 Typical home and usage, hot-side only or looped away application	3/4" - 1 1/4"	up to 12 gpm	RESIN1.5
TT1354-11/2" Estate home or light commercial application for 11/2" service line	1 1/2"	up to 35 gpm	RESIN2.5

PROFESSIONAL SOFTENER SERIES

CS-TT1054-7000 (Spectrum Soft)	3/4" - 1 1/2"	up to 25 gpm	See Professional Series Section
--------------------------------	---------------	--------------	---------------------------------

COMMERCIAL SYSTEMS AVAILABLE

Larger systems, multiple systems or configurations	See Commercial Section
--	------------------------

CAUTION: A softener is not a drinking or water filtration system.
CAUTION: If a softener needs to be installed at main water supply then a reverse osmosis system (See Sink Systems and the RO3) would be required at a sink for drinking water.

RECOMMENDED:
 Any EWS Whole Home Water Filtration System is the standard installation at main service line providing "Central Water" to the home with softener correctly installed after the EWS System or highly recommended on the inlet to the water heater(s) for the hot side only. This provides filtered water to the entire home while providing the consumer the slippery or silky feeling and/or the perceived benefits of softened water. Hot side only applications provide the softened water where the customer wants it at the shower, bath, warm/hot laundry, dishwasher and hot side where heated water is more of the hardness issue. Hot side applications also avoid the expense of soft water loops and bypassed lines and greatly limits the environmental impact of the brine discharge.



Softeners Only - Does not apply to any EWS or CWL filtration product

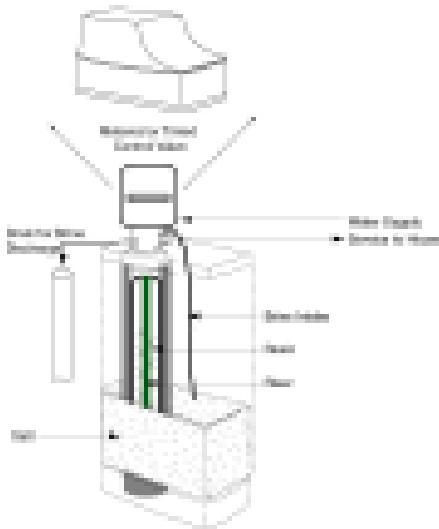
- WARNING:** Legal restrictions or outright ban may apply to the use of softeners and the brine discharge.
- WARNING:** Warranty issues with other product(s), fixtures and/or finishes may apply to the use of softeners.
- WARNING:** Individuals under treatment for kidney or heart disease, diabetes or high blood pressure should consult their physician prior to consuming water from this product

Complete information and specifications are available on every product in the EWS Product Catalog and is available upon request through EWS Representation, EWS Customer Service or online @ www.ewswater.com.

ALL FILTRATION PRODUCT PROUDLY MADE & ASSEMBLED IN THE USA



SOFTENERS



DTV Valve (front view)

Not pictured: Bypass Valve to the rear of the Valve.

Electrical: 24 volt transformer uses the power of a doorbell

Drain: 1/2" Discharge is a brine. See Warnings and Restrictions

Freeboard: Space allows resin space to lift during regeneration.

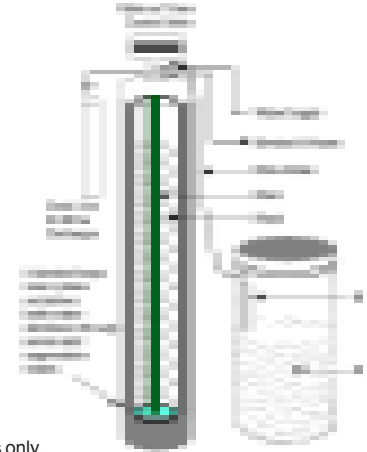
Tank: Non-corrosive, seamless, one-piece blow molded with tough epoxy and fiberglass outer laminate. Note: actual color of tank may vary. **No outer cover found in the filtration media systems**

Riser: Specialty PVC tubing food & beverage compliant for distribution of water flow

Resin: See specifications for advanced cross-link 10 resin

Lower Riser Screen: Maintains a closed system where resin does not escape into home plumbing during normal operation.

Self Leveling Base: Adjusts to installed surface. Twin tank systems only



For Illustration Purposes Only: RT1035

For Illustration Purposes Only: TT1054 or TT1354-11/2"

RT1035 - Low to Moderate household/water usage and/or hot-side only.

32,000 grain capacity up to 72,000 depending on setting. Incorporated brine tank holds 200 lbs of salt. Can use either sodium or potassium chloride. Digital high-efficiency metered valve and low profile turbine meter meet the highest standards to waste less water, use less salts, create less brine discharge and allow a more even effect of softened water at all times.

TT1054 - Moderate to large household/greater water usage and/or harder water conditions.

48,000 up to 135,000 depending on setting. Separate brine tank holds 300 lbs of salt. Can use either sodium or potassium chloride. Digital high-efficiency metered valve and low profile turbine meter assembly meet the highest standards to waste less water, use less salts, create less brine discharge and allow a more even effect of softened water at all times.

TT1354-11/2" - Large household or light commercial unit.

60,000 up to 148,000 depending on setting. Separate brine tank holds 300 lbs of salt. Can use either sodium or potassium chloride. Mechanical high-efficiency metered valve and meter assembly meet the highest standards to waste less water, use less salts, create less brine discharge and allow a more even effect of softened water at all times.

Softener System Model #	Resin* cubic feet	Softens** Hardness up to	Installed Main Line Size	Service Flow Rates GPM	Regen Flow Rates GPM	Bypass Included or Install Needed	Install Size*** H x W x D	Brine Tank Size*** H x W x D
RT1035	0.75	25 grains	3/4" to 1"	12	2.5	included	44"x14"x23"	n/a
TT1054	1.5	120 grains	3/4" to 1 1/4"	12	2.5	included	62"x10"x15"	62"x10"x15"
TT1354-11/2"	2.5	120 grains	1 1/4" to 1 1/2"	35	10	plumber install	64"x13"x22"	64"x13"x22"
CS-TT1054-7000 Pro Series - Spectrum Soft	1.5	120 grains	3/4" to 1 1/2"	up to 25	2.5	included	62"x13"x20"	62"x13"x20"

* Applicable to most municipally-treated water. Water being treated with Chlorine or Chloramine (combination of chlorine and ammonia) will exhaust all softener resin prematurely. Specify the correct EWS or CWL Whole Home Water Filtration System prior to any softener system. Useful life based on proper specification, application, installation, usage and local water conditions.

** Calculate Hardness: If you get a number in PPM (parts per million) or Mg/L (milligrams per liter) simply divide the number by 17.1 to calculate the grains (gpg or grains per gallon) of hardness.

NOTE: Water hardness is comprised of the naturally found calcium and magnesium minerals and not considered a contaminant. Hardness up to a certain amount is only an aesthetic. Most appliances, heaters and fixtures have compensated and suggest the proper routine maintenance for the possible buildup. Soaps no longer need lather and all use concentrated forms where less is required. Water spots should be considered like dust in the air, you can not totally eliminate and a simple wipe off should be routine.

*** Installation size may vary. The use of flexible stainless piping is highly recommended. This may prevent pressure issues, eliminates the cost of unions on installed bypasses, lowers labor costs and require less clearance. See Service Guide for additional information.

Information on specifications are available in complete information booklets on this and every product in the EWS Product Catalog, as well as, Setup, Installation and Service Guides which are available upon request through EWS Representation, EWS Customer Service or online @ www.ewswater.com.

WARNING: Do not use with water that is microbiologically unsafe or of unknown quality without adequate disinfection before the system.
CAUTION: Well water needs to be properly and completely tested before the specification of any filtration and treatment system(s).

NOTE: Any EWS System can be combined with EWS softeners (preferred hot-side only) and/or additional EWS sink filtration product based on consumer preference, need, and/or based on the local water conditions.

ALL FILTRATION PRODUCT PROUDLY MADE & ASSEMBLED IN THE USA



ALL FILTRATION PRODUCT PROUDLY MADE & ASSEMBLED IN THE USA



EWS, INC. ENVIRONMENTAL WATER SYSTEMS



RESIDENTIAL WATER FILTRATION

- **ESSENTIAL DRINKING WATER FILTRATION SYSTEMS**
- **ESSENTIAL REVERSE OSMOSIS SYSTEMS**
- **SINGLE-STAGE INLINE**
- **ELF REPLACEMENT CARTRIDGE**

ewswater.com

O: 702.256.8182 (M-F 8:30am-4:30pm PST)

F: 702.256.3744

E: customerservice@ewswater.com

Complete Product Booklets and Service Guides for each system is available online and through customer service.

Information includes all schematics, technical information, removal capabilities, how to setup, install & startup each system as well as any troubleshooting and any other information we could think of in order to help you.

Highest Quality Product & Award Winning Customer Service Since 1987

FIND THE RIGHT SINK FILTER FOR YOU

Whether your water is treated with chlorine or chloramine, whether you prefer reverse osmosis (RO) or not, Environmental Water Systems has the right drinking water system to protect you and your family. If you need help, please call EWS Customer Service at 702.256.8182 Monday-Friday 8.30 am - 4.30 pm Pacific Time, or visit us at www.ewswater.com.



MADE IN THE USA



MY DRINKING WATER OPTIONS

Taste does not equal health or quality. If it did, then McDonalds fries and Oreos would be health foods. (We wish.) Our ESSENTIAL systems are the first and only drinking water systems built from the ground up to offer true protection from toxic contaminants like chlorine, chloramine, VOCs, THMs, pesticides, obesogens, pharmaceutical residues, and more.

The result is water that not only tastes good, but is good for you and your family. The ESSENTIAL filters the water at the point of use (usually a kitchen sink) and provides filtered water for cooking and drinking. The ESSENTIAL suits all budget or space concerns.

Due to its advanced filtration, no water tank, and crisp mineral water taste, about 80% of families choose the ESSENTIAL Drinking Water System over reverse osmosis.

ESSENTIAL DRINKING WATER SYSTEM

The ESSENTIAL removes chlorine, chloramine, and thousands of other contaminants and offers the additional safeguard of reducing lead and removing 99.99% of cysts (cryptosporidium and giardia). **Model #: DWS.**

ESSENTIAL DRINKING WATER SYSTEM WITH UV

Our most popular upgrade provides the same great benefits of the ESSENTIAL, with an upgrade to our patented 99.99% effective UV safeguard. Kills bacteria, viruses, E.coli and other microorganisms. Ideal for people with compromised immune systems. **Model #: DWS-UV.**

MY REVERSE OSMOSIS OPTIONS

Reverse osmosis is ideal for those who are allergic to the fluoride in city tap water, are on water that does not meet EPA limits for heavy metals, or who prefer a more stripped down or "flatter" taste to their water.

In about 80% of homes, the ESSENTIAL Drinking Water System (see left) is the proper choice, due to its highly advanced filtration, conservation of minerals for a crisp mineral water taste, and no need for a water storage tank.

ESSENTIAL THREE-STAGE REVERSE OSMOSIS

Our ESSENTIAL RO3 uses a high-performance, 50 gallon per day membrane which removes inorganics, heavy metals, fluoride, naturally found minerals, lead, and cysts (cryptosporidium and giardia). **Model #: RO3.**

ESSENTIAL THREE-STAGE REVERSE OSMOSIS W/ UV

Our ESSENTIAL RO3-UV uses a high-performance, 50 gallon per day membrane which removes inorganics, heavy metals, fluoride, naturally found minerals, lead, and cysts. Our patented UV upgrade kills 99.99% of bacteria, viruses, E.coli and other microorganisms. Ideal for people with compromised immune systems. **Model #: RO3-UV.**

Four-stage (RO4) and five-stage (RU500T35) reverse osmosis options (not shown) are available for particulate water and difficult well water applications.



ARE YOU ON WELL WATER?

If you are on private or community well water, you need information to determine any water issues and their solutions. Well water requires complete and independent testing. Call EWS Customer Service at 702.256.8182 or visit EWSWATER.COM for more information.

FILTER ALL THE WATER IN YOUR HOME WITH ONE SYSTEM. Every sink, shower, and bath in your home could provide you with chlorine-free & pollutant-free water. No hassle, no maintenance, no salts or chemicals, and trusted by hospitals, health care centers, military, and private homes worldwide. For more information on EWS Central Water Filtration, visit us online at www.ewswater.com or call EWS customer service at 702.256.8182 (Mon.-Fri. 8.30 am - 4.30 pm Pacific Time).



Essential Drinking Water Filtration

The best and most complete sink filtration systems. Period...!

Drinking Water 3-Stage Advanced Filtration at the Sink

Point of use for all oral consumption such as drinking, cooking, ice, coffee

Model No.	Installed POU Supply Line Size	Service Flow Rate	Replacement Filter Set (Replace Annually*)
DWS	up to 1/2"	up to .9 gpm	F.SET.DWS
DWS-UV Additional safeguard with UV disinfection	up to 1/2"	up to .9 gpm	F.SET.DWS-UV



Model No. DWS

DWS systems come complete with all filters, angle stop valve supply connection, 5 feet each of red and blue color-coded tubing, mounting bracket with available clips for UV upgrade, chrome with white trim, swivel long reach water dispenser and a complete service manual.

No-Lead Compliant and Meets or exceeds NSF Standard 42 and 53

DWS-UV systems come with all items from DWS system and additionally include the UV lamp, module and 55 volt transformer for the upgrade of UV Disinfection.

No-Lead Compliant and Meets or Exceeds NSF Standard 42, 53 and 55

Optional dispenser finishes are available.

Single-Stage In-Line Filtration

Limited usage, limited space, point of use for drinking, cooking, ice, coffee

Model No.	Installed POU Supply Line Size	Service Flow Rate	Replacement Filter Set (Replace Annually*)
SS	up to 1/2"	up to .9 gpm	F.SET.SS



Model No. SS

SS single stage units come complete with filter, angle stop valve supply connection, 5 feet each of red and blue color-coded tubing, mounting bracket and a complete service manual.

No-Lead Compliant and Meets or Exceeds NSF Standard 42 and 53

Unit does not come with a dispenser.

Dispenser with optional finishes can be purchased separately.

Complete Service Manuals on all Essential DWS Systems and all Essential RO Systems are included with all systems and are available online at ewswater.com

EWS provides complete information for the proper setup, installation, start-up and maintenance of all systems. Information is complete and should be compared to what other manufacturers offer their customers.

ALL FILTRATION PRODUCT PROUDLY MADE & ASSEMBLED IN THE USA


Essential Reverse Osmosis

A new breed of reverse osmosis that is actually effective on toxic contaminants

Drinking Water 3-Stage Advanced Filtration at the Sink

Point of use for drinking, cooking, ice, coffee for common municipal water situations

Model No.	Installed POU Supply Line Size	Service Flow Rate	Replacement Filter Set (Replace Annually*)
RO3	up to 1/2"	up to .9 gpm	F.SET.RO3
RO3-UV Additional safeguard with UV disinfection	up to 1/2"	up to .9 gpm	F.SET.RO3-UV



Model No. RO3

RO3 systems come complete with all filters, membrane, angle stop valve supply connection, drain connections, 3.2 gallon storage tank, 5 feet each of red, blue and yellow color-coded tubing, black drain tubing, mounting bracket with available clips for UV upgrade, chrome with white trim, swivel long reach water dispenser, matching air gap adaptor and a complete service manual.

No-Lead Compliant and Meets or Exceeds NSF Standard 42, 53 and 58

RO3-UV systems come with all items from RO3 system and additionally include the UV lamp, module and 55 volt transformer for the upgrade of UV Disinfection.

No-Lead Compliant and Meets or Exceeds NSF Standard 42, 53, 58 and 55

Optional dispenser finishes are available.

Please Note: If applicable, Five (5)-Stage Reverse Osmosis Systems are available in the EWS Product Catalog - Well Water Section

Reverse Osmosis 4-Stage Filtration

Additional pre-sediment filtration based on particulate city water or basic well water

Model No.	Installed POU Supply Line Size	Service Flow Rate	Replacement Filter Set (Replace Annually*)
RO4	up to 1/2"	up to .9 gpm	F.SET.RO4
RO4-UV Additional safeguard with UV disinfection	up to 1/2"	up to .9 gpm	F.SET.RO4-UV



Model No. RO4

RO4 systems come complete with all filters, membrane, angle stop valve supply connection, drain connections, 3.2 gallon storage tank, 5 feet each of red, blue and yellow color-coded tubing, black drain tubing, mounting bracket with available clips for UV upgrade, chrome with white trim, swivel long reach water dispenser, matching air gap adaptor and a complete service manual.

No-Lead Compliant and Meets or Exceeds NSF Standard 42, 53 and 58

RO4-UV systems come with all items from RO4 system and additionally include the UV lamp, module and 55 volt transformer for the upgrade of UV Disinfection.

No-Lead Compliant and Meets or Exceeds NSF Standard 42, 53, 58 and 55

Optional dispenser finishes are available.

ALL FILTRATION PRODUCT PROUDLY MADE & ASSEMBLED IN THE USA



Complete Filter Replacement Sets for All Essential Sink Filtration Systems

Always order replacements correctly - Find the proper replacement filter set for each model number.

Replacement Filter Sets for Essential Filtration Systems


F.SET.DWS



F.SET.RO3



F.SET.RO4

System Model No.	Filter Set Replacement: Item No.
SS (Single-Stage)	F.SET.SS
DWS	F.SET.DWS
DWS-UV	F.SET.DWS-UV
RO3	F.SET.RO3
RO3-UV	F.SET.RO3-UV
RO4	F.SET.RO4
RO4-UV	F.SET.RO4-UV



F.SET.DWS-UV



F.SET.RO3-UV



F.SET.RO4-UV

*Replace:
 All filters and UV lamp up to one year. ¹
 UV Housing every 3 years per mfg. recommendation.
 Membranes up to every 18 months. ¹

UV Housing Replacement for All Sink Filtration Systems

Replace UV Module as recommended every 3 years

Part No.	Description
P-H-UV-4.PIN	complete UV Housing with UV Lamp (no tubing or electrical)
P-H-UV-ONLY	complete UV Housing (without UV Lamp, tubing or electrical)



 Part No.
 P-H-UV-4.PIN

*Replace:
 UV lamp up to one year. ¹
 UV module every 3 years per mfg. recommendation.

¹All filter replacement is based on local water conditions and usage.
 Always replace as needed and not beyond recommended time limit. Applicable to most municipally-treated water. Well water needs to be properly and completely tested before any specification of any filtration and treatment system(s)

FILTER SETS
ALL FILTRATION PRODUCT PROUDLY MADE & ASSEMBLED IN THE USA


Optional Dispenser/Faucet Finishes
Long-reach, swivel water dispensers, optional finishes with black trim

Finish Options*:	If Ordering with System		
Satin Nickel	add: - SN	to Model No.:	
Polished Nickel	add: - PN	to Model No.:	
Polished Brass	add: - PB	to Model No.:	
Oil Rubbed Bronze	add: - ORB	to Model No.:	
Finish Options*:	Ordering Separately		
Satin Nickel	Item No.:	FD-PVD-SN	
Polished Nickel	Item No.:	FD-PVD-PN	
Polished Brass	Item No.:	FD-PVD-PB	
Oil Rubbed Bronze	Item No.:	FD-PVD-ORB	

*Coordinated Black Air Gap Adaptor for RO Systems/Dispensers Item No.: FD-AG-BL

Optional Pressure Limiting Valve
Highly recommended to prevent pressure surging. Pressure should be limited to max. 75 psi

Item No.:	PLV-60	Install in-line on feed line to sink system
-----------	--------	---



UV Upgrade for All Essential Sink Filtration Systems
Simply Upgrade Any Essential DWS or RO System to add UV Disinfection at any time

Part No.	Description
P-UV-ADDON-DWS	complete UV Upgrade for DWS System, includes: UV Housing with UV Lamp, correct tubing and electrical connections
P-UV-ADDON-RO	complete UV Upgrade for RO3 or RO4 Systems, includes: UV Housing with UV Lamp, correct tubing and electrical connections

*Replace:
UV lamp up to one year.¹
UV module every 3 years per mfg. recommendation.

ALL FILTRATION PRODUCT PROUDLY MADE & ASSEMBLED IN THE USA





ESSENTIAL Drinking Water

It's not just about taste. Introducing the first and only drinking water system offering true protection from toxic contaminants.

- World-class EWS quality and performance.
- Highest quality carbon filtration available.
- Hassle-free and low maintenance.
- Quick and easy installation.
- Made in the USA, meets or exceeds all compliances.
- Protects you from chloramine (chlorine and ammonia compound), chlorine, THMs, VOCs, pesticides, lead, cysts, rust, silt, sediment, bacteria and viruses¹, and more.²

Chlorine (a common disinfectant used in USA tap water) and its byproducts are known carcinogens. Drinking them, or inhaling and absorbing them while showering or bathing, is not recommended. The New York State Dept. of Health and President's Cancer Panel recommend water filtration to reduce or eliminate our exposure to these substances.*



NO MORE WASTED MONEY. NO MORE PLASTIC BOTTLES.

With the **ESSENTIAL** at your sink, you will save at least \$500 every year in bottled water expenses and prevent plastic waste in our landfills and oceans. Simply fill up your reusable bottle at your sink and go!



HASSLE-FREE ENJOYMENT.

No costly monthly bottle delivery. No frequent filter replacements. No taking up valuable refrigerator or countertop space. Just quality filtered water every day for drinking, cooking, making your morning coffee, watering the plants... you name it, **ESSENTIAL** is there for you.



PROTECTION FOR YOU, YOUR HOME, AND OUR PLANET.

The **ESSENTIAL** is designed for today's adverse water conditions and anticipated conditions in the future and is – without a doubt – the most advanced and highest quality filtration product available, capable of handling chloramine, chlorine, dyes, fuels, pharmaceutical residues, lead, cysts, bacteria¹ and more.² The result is truly clean water you can trust and enjoy.



ADVANCED FILTRATION AND PERFORMANCE.

The **ESSENTIAL** was designed from the ground up with our full bed depth, fully compliant, USA-made filters to handle difficult contaminants like chloramine (chlorine and ammonia compound). It is the very first sink filtration system that effectively protects you from chloramine, chlorine, THMs, lead, cysts, bacteria¹ and much more.²



***FILTER ALL THE WATER IN YOUR HOME WITH ONE SYSTEM.** Every sink, shower, and bath in your home could provide you with chlorine-free & pollutant-free water. No hassle, no maintenance, no salts or chemicals, and trusted by hospitals, health care centers, military, and private homes worldwide. For more information on EWS Central Water Filtration, visit us online at www.ewswater.com or call EWS customer service at 702.256.8182 (Mon.-Fri. 8.30 am - 4.30 pm Pacific Time).

TECHNICAL INFORMATION

ESSENTIAL DRINKING WATER FILTRATION SYSTEMS

MODEL #s: DWS and DWS-UV

All Product Tearsheets Available Online @ ewswater.com

SYSTEM SPECIFICATIONS

OPERATION TEMPERATURE: Maximum 100° F (38° C) / Minimum 40° F (4° C)

OPERATION PRESSURE: Maximum 75 psi / Minimum 30 psi

SYSTEM FLOW RATE: <1.0 gallons per minute (gpm)

Do not use with water that is microbiologically unsafe or of unknown quality without adequate disinfection before or after the system. Replace your filters and UV lamp annually or as needed (do not exceed 1 year). Install in cold water supply only. Install in compliance with local and state regulations.

All installation instructions, service manuals, technical and product information is available online at www.EWSWATER.com

MODEL # REPLACEMENT FILTER SET

DWS F.SET.DWS (Includes: F-PRESED, F-GAC, F-GAC-B)

DWS-UV F.SET.DWS-UV (Includes: F-PRESED, F-GAC, F-GAC-B, F-LAMP)

SERVICE LIFE ON FILTERS:
UP TO 1 YEAR.* REPLACE YOUR
FILTERS ANNUALLY OR AS NEEDED.
DO NOT EXCEED 1 YEAR.

FILTER SPECIFICATIONS

STAGE 1 ITEM #: F-PRESED

DESCRIPTION: Pre-Sediment (5 Micron)

PURPOSE: Filters out rust, silt, and sediment.

FEATURES & BENEFITS: Enhances the performance of the following filters.

CONSTRUCTION: 100% pure polypropylene fibers. No fillers or binders. Meets FDA requirements for all food and beverage contact.

SERVICE LIFE: 1 year[‡]

MAX. FLOW: <1.0 GPM / 3.4 LPM

MAX. PRESSURE: 75 PSIG / 5.17 Bar

TEMPERATURE RANGE: 40-100° F / 4-38° C

Fully Compliant
with California
No-Lead Standards.



COMPONENT

This filter element tested and certified under ANSI/ NSF Standard 42 & 53 for materials only.

STAGE 2 ITEM #: F-GAC

DESCRIPTION: Pre-Filter Advanced Carbon

PURPOSE: Filters chlorine, chloramine, and VOCs for clear, clean water. Reduces and/or eliminates bad tastes and odors.

FEATURES & BENEFITS: Increased surface area, almost no fines release, enhanced adsorption, excellent performance.

CONSTRUCTION: Advanced carbon.

SERVICE LIFE: 1 year[‡]

MAX. FLOW: <1.0 GPM / 3.4 LPM

MAX. PRESSURE: 75 PSIG / 5.17 Bar

TEMPERATURE RANGE: 40-100° F / 4-38° C

STAGE 3 ITEM #: F-GAC-B

DESCRIPTION: Post-Filter Carbon Block (1 Micron)

PURPOSE: Advanced final stage filter for chlorine, chloramine (chlorine and ammonia compound), lead, cysts, VOCs, and more.

FEATURES & BENEFITS: Increased surface area, enhanced adsorption, excellent performance in a carbon block form.

CONSTRUCTION: Activated carbon block.

SERVICE LIFE: 1 year[‡]

MAX. FLOW: <1.0 GPM / 3.4 LPM

MAX. PRESSURE: 75 PSIG / 5.17 Bar

TEMPERATURE RANGE: 40-100° F / 4-38° C

The ESSENTIAL comes fully assembled and complete with everything you need for a proper installation:

chrome faucet dispenser (finish options available),
angle stop valve connection, red and blue tubing (5 ft. each), mounting bracket, and all filters.

ITEM #: F-LAMP** (OPTIONAL, INCLUDED WITH MODEL #: DWS-UV)

DESCRIPTION: Ultraviolet (UV) Disinfection**

PURPOSE: Kills bacteria, viruses, and other microorganisms.

FEATURES & BENEFITS: Independently tested to reduce E. coli by 99.99992% and micrococcus luteus by 99.93%.

CONSTRUCTION: UV lamp encased in glass and 316 bonded stainless steel interior housing.

SERVICE LIFE: 1 year[‡]

MAX. FLOW: <1.0 GPM / 3.4 LPM

MAX. PRESSURE: 75 PSIG / 5.17 Bar

TEMPERATURE RANGE: 40-100° F / 4-38° C

[‡]Filter service life is based on local water conditions and usage.

**UV upgrade is available pre-assembled as model# DWS-UV. A UV upgrade kit can be added to any DWS system at any time.

¹ UV upgraded systems only.

² These substances may or may not be in your water. Please ensure this is the correct system for your needs. Please see included instructions for proper installation and usage.

SYSTEM SIZE: 5" deep x 16" tall x 13" wide (allow 4" clearance at the bottom of the unit for filter replacement maintenance)

SHIPPING CARTON SIZE: 14" x 11" x 11"

SHIPPING CARTON WEIGHT: 8 lbs.

Pictured at Right:
The ESSENTIAL RO3.

Our ESSENTIAL Reverse Osmosis systems are available to suit specific water conditions or personal preferences. Please contact EWS Customer Service for more information.



CALL EWS CUSTOMER SERVICE: 702.256.8182 (MONDAY-FRIDAY 8.30 AM-4.30 PM PACIFIC TIME)

FAX: 702.256.3744 EMAIL: CUSTOMERSERVICE@EWSWATER.COM

WWW.EWSWATER.COM



ESSENTIAL Single Stage

Limited space? Improve your water quality and taste at your wet bar, ice maker, or faucet.

- World-class EWS quality and performance.
- Highest quality carbon block filtration available.
- Hassle-free and low maintenance.
- Quick and easy installation.
- Made in the USA, meets or exceeds all compliances.
- Protects you from chloramine (chlorine and ammonia compound), chlorine, THMs, VOCs, pesticides, lead, cysts, rust, silt, sediment, and more.²

Chlorine (a common disinfectant used in USA tap water) and its byproducts are known carcinogens. Drinking them, or inhaling and absorbing them while showering or bathing, is not recommended. The New York State Dept. of Health and President's Cancer Panel recommend water filtration to reduce or eliminate our exposure to these substances.*



NO MORE WASTED MONEY. NO MORE PLASTIC BOTTLES.

The **ESSENTIAL** single stage can be used in-line for many limited applications. You will save at least \$500 every year in bottled water expenses and prevent plastic waste in our landfills and oceans. Simply fill up your reusable bottle at your sink and go!



PROTECTION FOR YOU, YOUR HOME, AND OUR PLANET.

The **ESSENTIAL** is designed for today's adverse water conditions and anticipated conditions in the future. This single stage filter is capable of handling chloramine, chlorine, dyes, fuels, pharmaceutical residues, lead, cysts, and more.² The result is truly clean water you can trust and enjoy.



ESSENTIAL DRINKING WATER.

Our **ESSENTIAL** drinking water filtration systems utilize our full bed depth, fully compliant, USA-made filters to handle difficult contaminants like chloramine (chlorine and ammonia compound). It is the very first sink filtration system that effectively protects you from chloramine, chlorine, THMs, lead, cysts, bacteria¹ and much more.²



ESSENTIAL RO.

Our **ESSENTIAL Reverse Osmosis** systems are available to suit specific water conditions or personal preferences. For example, if you prefer a flatter taste or are allergic to fluoride, then our **ESSENTIAL RO** may be right for you. Call EWS customer service at 702.256.8182 for more information.



***FILTER ALL THE WATER IN YOUR HOME WITH ONE SYSTEM.** Every sink, shower, and bath in your home could provide you with chlorine-free & pollutant-free water. No hassle, no maintenance, no salts or chemicals, and trusted by hospitals, health care centers, military, and private homes worldwide. For more information on EWS Central Water Filtration, visit us online at www.ewswater.com or call EWS customer service at 702.256.8182 (Mon.-Fri. 8.30 am - 4.30 pm Pacific Time).

TECHNICAL INFORMATION

ESSENTIAL SINGLE STAGE FILTRATION

MODEL #: SS

All Product Tearsheets Available Online @ ewswater.com

SYSTEM SPECIFICATIONS

OPERATION TEMPERATURE: Maximum 100° F (38° C) / Minimum 40° F (4° C)

OPERATION PRESSURE: Maximum 75 psi / Minimum 30 psi

SYSTEM FLOW RATE: <1.0 gallons per minute (gpm)

Do not use with water that is microbiologically unsafe or of unknown quality without adequate disinfection before or after the system. Replace your filter annually or as needed (do not exceed 1 year). Install in cold water supply only. Install in compliance with local and state regulations.

All installation instructions, service manuals, technical and product information is available online at www.EWSWATER.com

MODEL # REPLACEMENT FILTER SET

SS

F.SET.SS

(Includes: F-GAC-B)

**SERVICE LIFE ON FILTERS:
UP TO 1 YEAR.* REPLACE YOUR
FILTERS ANNUALLY OR AS NEEDED.
DO NOT EXCEED 1 YEAR.**

Fully Compliant
with California
No-Lead Standards.

FILTER SPECIFICATIONS

ITEM #: F-GAC-B

DESCRIPTION: Post-Filter Carbon Block (1 Micron)

PURPOSE: Advanced filter for chlorine, chloramine (chlorine and ammonia compound), lead, cysts, VOCs, and more.

FEATURES & BENEFITS: Increased surface area, enhanced adsorption, excellent performance in a carbon block form.

CONSTRUCTION: Activated carbon block.

SERVICE LIFE: 1 year†

MAX. FLOW: <1.0 GPM / 3.4 LPM

MAX. PRESSURE: 75 PSIG / 5.17 Bar

TEMPERATURE RANGE: 40-100° F / 4-38° C

NSF

COMPONENT

This filter element tested and certified under ANSI/NSF Standard 42 & 53 for materials only.

The **ESSENTIAL Single Stage** unit comes complete fully assembled. The unit comes with everything you need for a proper installation: angle stop valve connection, red and blue tubing (5 ft. each), and mounting bracket.

This model does not include a faucet or dispenser. A dispenser faucet can be purchased separately, or you may upgrade to an **ESSENTIAL Drinking Water System** (model #DWS or #DWS-UV).

The **ESSENTIAL Single Stage** offers full bed depth filtration and superior performance compared to the limited capacities of common in-line filters, such as filters found in refrigerators. The **ESSENTIAL Single Stage** can be used in-line for many limited applications. However, it is not meant to replace the upgraded performance and capabilities of proper drinking water systems, reverse osmosis systems, or whole home filtration appliances.



Pictured at Right:
Exploded view of
our **ESSENTIAL
Single Stage** unit.



†Filter service life is based on local water conditions and usage.

**UV upgrade is available pre-assembled as model# DWS-UV.

¹ UV upgraded systems only.

² These substances may or may not be in your water. Please ensure this is the correct system for your needs. Please see included instructions for proper installation and usage.

UNIT SIZE: 3" x 15" (allow 4" clearance at the bottom of the unit for filter replacement maintenance)

SHIPPING CARTON SIZE: 5" x 5" x 15"

SHIPPING CARTON WEIGHT: 2 lbs.



CALL EWS CUSTOMER SERVICE: 702.256.8182 (MONDAY-FRIDAY 8.30 AM-4.30 PM PACIFIC TIME)

FAX: 702.256.3744 EMAIL: CUSTOMERSERVICE@EWSWATER.COM

WWW.EWSWATER.COM



All Product Tearsheets Available Online @ ewswater.com



THREE STAGE

ESSENTIAL Reverse Osmosis

Introducing our new three-stage reverse osmosis system, offering true protection from toxic contaminants.

- World-class EWS quality and performance.
- Highest quality carbon pre- and post-filtration.
- High performance membrane – up to 50 gallons per day.
- Quick and easy installation.
- Made in the USA, meets or exceeds all compliances.
- Protects you from chloramine (chlorine and ammonia compound), chlorine, THMs, VOCs, pesticides, lead, cysts, rust, silt, sediment, bacteria and viruses¹, and more.²
- Removes inorganics, heavy metals, minerals, and total dissolved solids.

Chlorine (a common disinfectant used in USA tap water) and its byproducts are known carcinogens. Drinking them, or inhaling and absorbing them while showering or bathing, is not recommended. The New York State Dept. of Health and President's Cancer Panel recommend water filtration to reduce or eliminate our exposure to these substances.*



NO MORE WASTED MONEY. NO MORE PLASTIC BOTTLES.

With the **ESSENTIAL** at your sink, you will save at least \$500 every year in bottled water expenses and prevent plastic waste in our landfills and oceans. Simply fill up your reusable bottle at your sink and go!



MEETS ALL YOUR NEEDS.

Enjoy contaminant-free water that meets your preferences for taste (i.e. "flatter" taste) and removal of minerals, total dissolved solids, fluoride, and inorganics. Not sure if reverse osmosis is right for you? Call EWS customer service at 702.256.8182 for assistance.



PROTECTION FOR YOU, YOUR HOME, AND OUR PLANET.

The **ESSENTIAL** is designed for today's adverse water conditions and anticipated conditions in the future and is – without a doubt – the most advanced and highest quality filtration product available, capable of handling chloramine, chlorine, dyes, fuels, pharmaceutical residues, lead, cysts, bacteria¹ and more.² The result is truly clean water you can trust and enjoy.



ADVANCED FILTRATION AND PERFORMANCE.

The **ESSENTIAL** was designed from the ground up with our full bed depth, fully compliant, USA-made filters to handle difficult contaminants like chloramine (chlorine and ammonia compound). It is a new breed of reverse osmosis that effectively protects you from chloramine, chlorine, THMs, lead, cysts, bacteria¹ and much more.²



***FILTER ALL THE WATER IN YOUR HOME WITH ONE SYSTEM.** Every sink, shower, and bath in your home could provide you with chlorine-free & pollutant-free water. No hassle, no maintenance, no salts or chemicals, and trusted by hospitals, health care centers, military, and private homes worldwide. For more information on EWS Central Water Filtration, visit us online at www.ewswater.com or call EWS customer service at 702.256.8182 (Mon.-Fri. 8.30 am - 4.30 pm Pacific Time).

TECHNICAL INFORMATION

ESSENTIAL RO REVERSE OSMOSIS FILTRATION SYSTEMS

MODEL #s: RO3 and RO3-UV

All Product Tearsheets Available Online @ ewswater.com

SYSTEM SPECIFICATIONS

OPERATION TEMPERATURE: Maximum 100° F (38° C) / Minimum 40° F (4° C)

OPERATION PRESSURE: Maximum 75 psi / Minimum 40 psi

SYSTEM FLOW RATE: <1.0 gallons per minute (gpm)

Do not use with water that is microbiologically unsafe or of unknown quality without adequate disinfection before or after the system. Replace your filters and UV lamp annually or as needed (do not exceed 1 year). Install in cold water supply only. Install in compliance with local and state regulations.

All installation instructions, service manuals, technical and product information is available online at www.EWSWATER.com

MODEL # REPLACEMENT FILTER SETS

RO3 F.SET.RO3 (Includes: F-GAC, F-MEM, F-GAC-B)

RO3-UV F.SET.RO3-UV (Includes: F-GAC, F-MEM, F-GAC-B, F-LAMP)

SERVICE LIFE ON FILTERS:
UP TO 1 YEAR.* REPLACE YOUR
FILTERS ANNUALLY OR AS NEEDED.
DO NOT EXCEED 1 YEAR.

FILTER SPECIFICATIONS

STAGE 1 ITEM #: F-GAC

DESCRIPTION: Pre-Filter Advanced Carbon

PURPOSE: Filters chlorine, chloramine, and VOCs for clear, clean water. Reduces and/or eliminates bad tastes and odors.

FEATURES & BENEFITS: Increased surface area, almost no fines release, enhanced adsorption, excellent performance.

CONSTRUCTION: Advanced carbon.

SERVICE LIFE: 1 year†

MAX. FLOW: <1.0 GPM / 3.4 LPM

MAX. PRESSURE: 75 PSIG / 5.17 Bar

TEMPERATURE RANGE: 40-100° F / 4-38° C

Fully Compliant
with California
No-Lead Standards.



This filter element tested
and certified under ANSI/
NSF Standard 42 & 53 for
materials only.

STAGE 2 ITEM #: F-MEM

DESCRIPTION: Advanced RO Membrane

PURPOSE: Protection from inorganics, chloride, nitrates, nitrites, heavy metals, and more. Removes minerals and fluoride to meet your preferences.

FEATURES & BENEFITS: Completely "stripped" water for full protection and as a precaution against fluoride allergies.

CONSTRUCTION: Polyamide thin-film composite.

SERVICE LIFE: 1 year†

PERMEATE FLOW: 50 GPD / 189 LPD

MAX. PRESSURE: 125 PSIG / 8.6 Bar

TEMPERATURE RANGE: 40-113° F / 4-45° C

STAGE 3 ITEM #: F-GAC-B

DESCRIPTION: Post-Filter Carbon Block (1 Micron)

PURPOSE: Advanced final stage filter for chlorine, chloramine (chlorine and ammonia compound), lead, cysts, VOCs, and more.

FEATURES & BENEFITS: Increased surface area, enhanced adsorption, excellent performance in a carbon block form.

CONSTRUCTION: Activated carbon block.

SERVICE LIFE: 1 year†

MAX. FLOW: <1.0 GPM / 3.4 LPM

MAX. PRESSURE: 75 PSIG / 5.17 Bar

TEMPERATURE RANGE: 40-100° F / 4-38° C

The ESSENTIAL comes
fully assembled and
complete with everything
you need for a proper
installation:
chrome faucet dispenser
(finish options available),
air gap, storage tank, angle
stop valve connection,
all fittings and tubings,
mounting bracket, and all
filters.

ITEM #: F-LAMP** (OPTIONAL, INCLUDED WITH MODEL #: RO3-UV)

DESCRIPTION: Ultraviolet (UV) Disinfection**

PURPOSE: Kills bacteria, viruses, and other microorganisms.

FEATURES & BENEFITS: Independently tested to reduce E. coli by 99.99992% and micrococcus luteus by 99.93%.

CONSTRUCTION: UV lamp encased in glass and 316 bonded stainless steel interior housing.

SERVICE LIFE: 1 year†

MAX. FLOW: <1.0 GPM / 3.4 LPM

MAX. PRESSURE: 75 PSIG / 5.17 Bar

TEMPERATURE RANGE: 40-100° F / 4-38° C

†Filter service life is based on local water conditions and usage.

**UV upgrade is available pre-assembled as model# RO3-UV. A UV upgrade kit can be added to any RO system at any time.

¹ UV upgraded systems only.

² These substances may or may not be in your water. Please ensure this is the correct system for your needs. Please see included instructions for proper installation and usage.

SYSTEM SIZE: 5" deep x 13" wide x 16" tall (allow 4" clearance at the bottom of the unit for filter replacement maintenance)

TANK SIZE: 11" x 11" x 16" (3.2 gal capacity, other tank sizes available)

SHIPPING CARTON SIZE: 12" x 12" x 30"

SHIPPING CARTON WEIGHT: 20 lbs.

Pictured at Right:
The ESSENTIAL.

Our ESSENTIAL drinking water filtration systems are available to suit specific water conditions or personal preferences. Please contact EWS Customer Service for more information.



CALL EWS CUSTOMER SERVICE: 702.256.8182 (MONDAY-FRIDAY 8.30 AM-4.30 PM PACIFIC TIME)

FAX: 702.256.3744 EMAIL: CUSTOMERSERVICE@EWSWATER.COM

WWW.EWSWATER.COM



**FOUR
STAGE**

ESSENTIAL Reverse Osmosis

Introducing our new four-stage reverse osmosis system, offering true protection from toxic contaminants.

- World-class EWS quality and performance.
- Highest quality carbon pre- and post-filtration.
- High performance membrane – up to 50 gallons per day.
- Pre-sediment stage for extra protection from particulates.
- Made in the USA, meets or exceeds all compliances.
- Protects you from chloramine (chlorine and ammonia compound), chlorine, THMs, VOCs, pesticides, lead, cysts, rust, silt, sediment, bacteria and viruses¹, and more.²
- Removes inorganics, heavy metals, minerals, and total dissolved solids.

Chlorine (a common disinfectant used in USA tap water) and its byproducts are known carcinogens. Drinking them, or inhaling and absorbing them while showering or bathing, is not recommended. The New York State Dept. of Health and President's Cancer Panel recommend water filtration to reduce or eliminate our exposure to these substances.*



NO MORE WASTED MONEY. NO MORE PLASTIC BOTTLES.

With the **ESSENTIAL** at your sink, you will save at least \$500 every year in bottled water expenses and prevent plastic waste in our landfills and oceans. Simply fill up your reusable bottle at your sink and go!



MEETS ALL YOUR NEEDS.

Enjoy contaminant-free water that meets your preferences for taste (i.e. "flatter" taste) and removal of minerals, total dissolved solids, fluoride, and inorganics. Not sure if reverse osmosis is right for you? Call EWS customer service at 702.256.8182 for assistance.



PROTECTION FOR YOU, YOUR HOME, AND OUR PLANET.

The **ESSENTIAL** is designed for today's adverse water conditions and anticipated conditions in the future and is – without a doubt – the most advanced and highest quality filtration product available, capable of handling chloramine, chlorine, dyes, fuels, pharmaceutical residues, lead, cysts, bacteria¹ and more.² The result is truly clean water you can trust and enjoy.



ADVANCED FILTRATION AND PERFORMANCE.

The **ESSENTIAL** was designed from the ground up with our full bed depth, fully compliant, USA-made filters to handle difficult contaminants like chloramine (chlorine and ammonia compound). It is a new breed of reverse osmosis that effectively protects you from chloramine, chlorine, THMs, lead, cysts, bacteria¹ and much more.²



***FILTER ALL THE WATER IN YOUR HOME WITH ONE SYSTEM.** Every sink, shower, and bath in your home could provide you with chlorine-free & pollutant-free water. No hassle, no maintenance, no salts or chemicals, and trusted by hospitals, health care centers, military, and private homes worldwide. For more information on EWS Central Water Filtration, visit us online at www.ewswater.com or call EWS customer service at 702.256.8182 (Mon.-Fri. 8.30 am - 4.30 pm Pacific Time).

TECHNICAL INFORMATION

ESSENTIAL RO REVERSE OSMOSIS FILTRATION SYSTEMS

MODEL #s: RO4 and RO4-UV

All Product Tearsheets Available Online @ ewswater.com

SYSTEM SPECIFICATIONS

OPERATION TEMP.: Max. 100° F (38° C) / Min. 40° F (4° C) **OPERATION PRESSURE:** Max. 75 psi / Min. 40 psi **SYSTEM FLOW RATE:** <1.0 GPM
Do not use with water that is microbiologically unsafe or of unknown quality without adequate disinfection before or after the system. Replace your filters and UV lamp annually or as needed (do not exceed 1 year). Install in cold water supply only. Install in compliance with local and state regulations.

All installation instructions, service manuals, technical and product information is available online at www.EWSWATER.com

MODEL # REPLACEMENT FILTER SET

RO4 **F.SET.RO4** (Includes: F-INLINE, F-GAC, F-MEM, F-GAC-B)

RO4-UV **F.SET.RO4-UV** (Includes: F-INLINE, F-GAC, F-MEM, F-GAC-B, F-LAMP)

**SERVICE LIFE ON FILTERS:
UP TO 1 YEAR.* REPLACE YOUR
FILTERS ANNUALLY OR AS NEEDED.
DO NOT EXCEED 1 YEAR.**

FILTER SPECIFICATIONS

ITEM #: F-INLINE (5 MICRON PRE-SEDIMENT FILTER)

PURPOSE: Protects you and the system from particulate matter, down to 5 micron.

FEATURES & BENEFITS: Removes tiny particles for enhanced performance and protection to the following filters.

CONSTRUCTION: Advanced carbon.

SERVICE LIFE: 1 year[‡]

MAX. FLOW: <1.0 GPM / 3.4 LPM

MAX. PRESSURE: 75 PSIG / 5.17 Bar

TEMPERATURE RANGE: 40-100° F / 4-38° C

Fully Compliant
with California
No-Lead Standards.



COMPONENT
This filter element tested
and certified under ANSI/
NSF Standard 42 & 53 for
materials only.

STAGE 1 ITEM #: F-GAC

DESCRIPTION: Pre-Filter Advanced Carbon

PURPOSE: Filters chlorine, chloramine, and VOCs for clear, clean water. Reduces and/or eliminates bad tastes and odors.

FEATURES & BENEFITS: Increased surface area, almost no fines release, enhanced adsorption, excellent performance.

CONSTRUCTION: Advanced carbon.

SERVICE LIFE: 1 year[‡]

MAX. FLOW: <1.0 GPM / 3.4 LPM

MAX. PRESSURE: 75 PSIG / 5.17 Bar

TEMPERATURE RANGE: 40-100° F / 4-38° C

STAGE 2 ITEM #: F-MEM

DESCRIPTION: Advanced RO Membrane

PURPOSE: Protection from inorganics, chloride, nitrates, nitrites, heavy metals, and more. Removes minerals and fluoride to meet your preferences.

FEATURES & BENEFITS: Completely "stripped" water for full protection and as a precaution against fluoride allergies.

CONSTRUCTION: Polyamide thin-film composite.

SERVICE LIFE: 1 year[‡]

PERMEATE FLOW: 50 GPD / 189 LPD

MAX. PRESSURE: 125 PSIG / 8.6 Bar

TEMPERATURE RANGE: 40-113° F / 4-45° C

STAGE 3 ITEM #: F-GAC-B

DESCRIPTION: Post-Filter Carbon Block (1 Micron)

PURPOSE: Advanced final stage filter for chlorine, chloramine (chlorine and ammonia compound), lead, cysts, VOCs, and more.

FEATURES & BENEFITS: Increased surface area, enhanced adsorption, excellent performance in a carbon block form.

CONSTRUCTION: Activated carbon block.

SERVICE LIFE: 1 year[‡]

MAX. FLOW: <1.0 GPM / 3.4 LPM

MAX. PRESSURE: 75 PSIG / 5.17 Bar

TEMPERATURE RANGE: 40-100° F / 4-38° C

ITEM #: F-LAMP** (OPTIONAL, INCLUDED WITH MODEL #: RO4-UV)

DESCRIPTION: Ultraviolet (UV) Disinfection**

PURPOSE: Kills bacteria, viruses, and other microorganisms.

FEATURES & BENEFITS: Independently tested to reduce E. coli by 99.99992% and micrococcus luteus by 99.93%.

CONSTRUCTION: UV lamp encased in glass and 316 bonded stainless steel interior housing.

SERVICE LIFE: 1 year[‡]

MAX. FLOW: <1.0 GPM / 3.4 LPM

MAX. PRESSURE: 75 PSIG / 5.17 Bar

TEMPERATURE RANGE: 40-100° F / 4-38° C

The ESSENTIAL comes
fully assembled and
complete with everything
you need for a proper
installation:
chrome faucet dispenser
(finish options available),
air gap, storage tank, angle
stop valve connection,
all fittings and tubings,
mounting bracket, and all
filters.

[‡]Filter service life is based on local water conditions and usage.

**UV upgrade is available pre-assembled as model# RO4-UV. A UV upgrade kit can be added to any RO system at any time.

¹ UV upgraded systems only.

² These substances may or may not be in your water. Please ensure this is the correct system for your needs. Please see included instructions for proper installation and usage.

SYSTEM SIZE: 5" deep x 16" wide x 16" tall (allow 4" clearance at the bottom of the unit for filter replacement maintenance)

TANK SIZE: 11" x 11" x 16" (3.2 gal capacity, other tank sizes available)

SHIPPING CARTON SIZE: 12" x 12" x 30"

SHIPPING CARTON WEIGHT: 22 lbs.

Pictured at Right:
The ESSENTIAL.

Our ESSENTIAL drinking water filtration systems are available to suit specific water conditions or personal preferences. Please contact EWS Customer Service for more information.



CALL EWS CUSTOMER SERVICE: 702.256.8182 (MONDAY-FRIDAY 8.30 AM-4.30 PM PACIFIC TIME)
FAX: 702.256.3744 EMAIL: CUSTOMERSERVICE@EWSWATER.COM

WWW.EWSWATER.COM

F-GAC and F-GAC-B Filters: Stages 2 and 3 found in all EWS DWS and DWS-UV Systems
 Stages 1 and 3 found in all EWS RO3 and RO4 Systems.

Versatility of Process

Filters allow the bonding of single or multiple types of extremely small sized particles onto a single support structure. For example, fine powdered lead sorbents bonded onto larger carbon support structures. This unique feature enables EWS to produce complex composite filtration media that can meet the requirements of complicated water contamination problems.

Increased Surface Area

The ability to bond extremely fine powdered media onto larger support particles results in increased surface area and improved kinetic efficiency. Instead of having one large particle available for filtration purposes, EWS technology makes possible the bonding of thousands of fine particles onto the surface of the larger support particles which greatly increases the surface area of the composite media.

Enhanced Kinetics

The process of increasing the surface area of a media enhances the adsorption kinetics and catalytic effects of that media. Consequently, EWS technology allows us to use less media and still achieve similar or superior filtration results. As a result, with this technology, we are now able to design smaller, more aesthetically appealing filtration devices with excellent performance characteristics.

Improved Performance

EWS carbon media for cartridge and block has improved catalytic and adsorption characteristics because of the increase in surface area and kinetic activity. Test results have proven that EWS composite adsorption products exceed the performance characteristics of simple, one component, granular based products.

Standard 42 Aesthetic Effects/Standard 53 Health Effects

Parameter	US EPA MCL	Influent Challenge	Effluent Average	Effluent Maximum	Percent Reduction Average	Percent Reduction Minimum
Chlorine	-	2.0 mg/L	0.03 mg/L	0.06 mg/L	98.5	97
Cyst	99.95% Reduction	111,750 Particles/ml	1 particle/ml	2 particles/ml	99.99%	99.99
Lead pH 8.5	15 ug/L	135 ug/L	5.5 ug/L	13 ug/L	95.9%	90
Lead pH 6.5	15 ug/L	149 ppb	1 ug/L	1 ug/L	99%	99

Notes Regarding NSF Compliant Testing

The F-GAC and F-GAB-B were challenged to remove 2 mg/L of chlorine where the average effluent in most tap water can be approximately .5 mg/L and a maximum up to 1.5 mg/L.

The challenge level of chlorine is much higher than found in treated tap water and makes the assumption for chloramine found as an alternative treatment method to disinfect tap water.*

The challenge of each filter resulted in a minimum chlorine reduction of only 97% and an average of 98.5% over 1,500 gallons at .9 gpm with a lead and cyst removal of 90 to 99% based on variances in pH range.



Note:

The lead and cyst testing was done where the amounts tested were 10 times the allowable limit set by the EPA.

Why EWS Uses Multiple Filters?

In order for good taste to actually equate to good quality and health, EWS uses 3 filters. A 5 micron (human hair is up to 20 times larger) Pre-Sediment Filter is used to protect and allow the Advanced Carbon Filters to perform at peak efficiency. Two (2) Advanced Carbon Filters are used as separate stages. Filtration becomes more effective as water passes through the first Carbon Filter and then through the final 1 micron Carbon Block to complete the filtration process.

A second pass for the water to be filtered through an additional stage is more effective than one pass through one multi-media filter (a filter with multiple materials) based on total filter bed depth, surface area and contact time to effectively remove contaminants. (See Carbon Filter Removal Chart for All Essential Filtration Systems)

*Chloramine is a compound comprised of chlorine and ammonia. For the removal of this compound to be effective, carbon must be able to have catalytic and kinetic capabilities of drawing the chlorine and attached ammonia onto the surface area of the carbon and drawing it into the interior surface area of the carbon granule. Greater surface area and contact time is necessary for adequate removal over the life of the filter cartridge.

Warning:

Most filters may remove the chloramine for a short time (taste only) until they become incapable of removing the entire compound. Single stage filters, multi-media filters, refrigerator filters, pitcher, carafe and faucet filters simply reduce the chlorine and allow the ammonia portion of the chloramine compound to shear off and render the filter useless as a foul or bad taste becomes evident and are limited by their filtration capacities. Therefore, similar to bottled water, taste becomes the actual consumer standard and not the health of the water or actual contaminants removed.

ALL FILTRATION PRODUCT PROUDLY MADE & ASSEMBLED IN THE USA



F-GAC advanced carbon filter meets or complies with NSF Standard 42 for reduction of Chlorine and other Volatile Organic Compounds. The cartridge utilizes a high performance advanced kinetic and catalytic granular activated carbon which provides exceptional filtration capacity and effectively reduces by an average of 98.5% chlorine, voc's, bad taste and odor in drinking water.

About Municipally-Treated Water

Municipal water is heavily regulated, monitored, tested, filtered and treated. Most taste, quality and health issues are directly related to the treatment or disinfection of the water and their by-products, as well as man-made pollutants common to most water (see reference #'s below generally between 3 to 5). Issues with heavy metals and primary contaminants (see reference #'s below generally between 0 to 2) are highly regulated and effectively treated by water utilities. These contaminants are rarely an issue with water quality.

How to Use the (GAC) Carbon Filtration Reference Chart

Below is a simple reference chart to give some perspective as to GAC's capabilities with various substances. Some items are heavy metals and inorganics, while others are VOC's (volatile organic compounds), some of which are man-made pollutants. Still other items, such as hardness, are not even considered contaminants. In general, GAC is very economical and a great compliment to municipally-treated water without the disadvantages of more aggressive filtration. GAC is used in all filtration due to its removal capacities. Know your water to select the correct product for you, your family and your home.

Acetaldehyde	4	Emulsions	2	Lead	3	Precipitated Sulfur	2
Acetic Acid	3	Ethyl Acetate	5	Lime	0	Propioic Acid	4
Acetone	4	Ethyl Acrylate	5	Mercaptans	4	Propionaldehyde	3
Alcohols	4	Ethyl Alcohol	4	Metal Salts	1	Propyl Acetate	4
Alkalinity	1	Ethyl Amine	4	Methyl Acetate	4	Propyl Alcohol	4
Amines	3	Ethyl Chloride	4	Methyl Alcohol	4	Propyl Chloride	4
Ammonia	3	Ethyl Ether	4	Methyl Bromide	5	Radon	4
Amyl Acetate	5	Fertilizers	1	Methyl Chloride	4	Rubber Hose Taste	5
Amyl Alcohol	5	Fluorides	2	Methyl Ethyl Ketone	5	Seawater	1
Antifreeze	4	Formaldehyde	2	Naphtha	5	Sediment	2
Arsenic	1	Gasoline	5	Nitrates	0	Soap	3
Benzene	5	Glycols	5	Nitric Acid	3	Sodium Hypochlorite	5
Bleach	5	Hardness	0	Nitrobenzene	5	Soluble Iron	2
Boron	1	Heavy Metals	3	Nitrotoluene	5	Solvents	4
Butly Alcohol	5	Herbicides	5	Odors (General)	5	Sulfuric Acid	1
Butly Acetate	5	Hydrogen Bromide	2	Oil - Dissolved	5	Sulphonated Oils	4
Calcium Hypochlorite	5	Hydrogen Chloride	1	Oil - Suspended	2	Suspended Matter	2
Carbon Dioxide	0	Hydrogen Fluoride	1	Organic Acids	4	Tannins	4
Chloral	5	Hydrogen Iodide	2	Organic Esters	5	Tar Emulsion	4
Chloramine	4	Hydrogen Peroxide	5	Organic Salts	4	Tartaric Acid	4
Chloroform	5	Hydrogen Selenide	3	Oxalic Acid	5	Taste (DI Water)	4
Chlorine	5	Hydrogen Sulfide	3	Oxygen	5	Taste (From Organics)	4
Clorobenzene	5	Hydrochlorous Acid	5	Ozone	4	THM's	5
Chlorophenol	5	Inorganic Acids	1	PCB's	5	Toluene	5
Chlorophyll	4	Inorganic Chemicals	1	Pesticides	5	Toluidine	5
Citric Acid	4	Insecticides	5	Phenol	5	Trichlorethylene	5
Cresol	5	Iodine	5	Phosphates	0	Turpentine	5
Defoliant	5	Isopropyl Acetate	5	Plastic Taste	5	Urine	2
Detergents	3	Isopropyl Alcohol	5	Plating Wastes	3	Vinegar	3
Diesel Fuel	5	Ketones	5	Potassium Permanganate	4	Xanthophyll	4
Dyes	5	Lactic Acid	4	Precipitated Iron	2	Xylene	5

KEY TO THE ABOVE LIST FOR CARBON FILTRATION:

5 - EXCELLENT: Proven Application **4 - VERY GOOD:** Proven Application **3 - GOOD:** Very Acceptable Result
2 - FAIR: limited application **1 - POOR:** not a recommended application (See RO) **0 - Not applicable** (See RO)

- Carbon Block technology has additional filtration capabilities and is the last stage in all EWS Essential Drinking Water Systems. See additional information.
- UV Disinfection for greater safeguards (DWS-UV, optional with Reverse Osmosis). See additional information.
- To prevent the absorption and inhalation of chlorine, chloramine, VOCs, by-products and pollutants. See CWL or EWS Whole Home Systems for GAC filtration to the entire home for bathing, showering and all uses.

ALL FILTRATION PRODUCT PROUDLY MADE & ASSEMBLED IN THE USA



F-GAC-B 1 micron carbon block filter meets or complies with NSF Standard 42 and 53 for reduction of Chlorine, other Volatile Organic Compounds, Lead and Cysts. The cartridge utilizes a high performance advanced kinetic and catalytic granular activated carbon as an extruded 1 micron carbon block which provides exceptional filtration capacity and effectively reduces by an average of 98.5% chlorine, VOCs, bad taste and odor in drinking water. This same filter also reduces lead by an average between 95.9% (@ pH 8.5) and 99% (@ pH 6.5) while eliminating Cysts by 99.99%. This is the last stage and final pass the water makes in all EWS Essential Drinking Water Systems.

Lead and Heavy Metal Reduction and Reduction of Soluble and Insoluble (Particulate) Lead

Particulate filtration is used to intercept insoluble lead-containing particles. F-GAC-B filters will reduce lead, a minimum of 95.9 (@ pH 8.5) and 99% (@ pH 6.5) over 1,500 gallons @ 0.9 gpm meeting NSF test protocol for Standard 53.



Chemical Adsorption

F-GAC-B 1 micron carbon block filters offer high levels of chemical reduction in potable drinking water, including the removal of chlorine and other compounds that contribute to taste and odor and reduces chlorine in a testing challenge by an average of 98.5% over 1,500 gallons @ 0.9 gpm meeting NSF test protocol for Standard 42.

Particulate, Cyst and Turbidity Reduction

F-GAC-B 1 micron carbon block filters provide >99.99% reduction of 3-4 µm particulate, and 99.99% reduction of 1-2 µm particulates.

Used in conjunction with high performance 5 micron sediment filters, F-GAC-B will have extended life. Pre-Sediment and Advanced Carbon Pre-Filtration in all EWS DWS Systems and Advanced Carbon Pre-Filtration and 50 GPD RO Membrane in all EWS RO Systems combined as separate full bed depth stages of filtration will provide several times greater life and filter capacities and capabilities than any single-pass multi-media filters.

UV Disinfection Technical Specifications (DWS-UV, RO3-UV, RO4-UV only)

F-LAMP is the lamp within the UV module which provides for the safeguard against Bacteria, E-coli, Viral and other Microorganisms and meets or complies with NSF Standard 55. See specifications and testing below.

Lamp Information:	Life specified up to 1 year of continuous operation based on testing protocol**	
Housing:	2"O.D. x 11.50" L	Fittings: Compression x 1/4 in. MNPT
Bulb Wattage:	6 Watts	UV Output: 30,000 micro-watts at maximum flow rate
Min/Max Water Temp:	40° to 85°F (4.4° to 29.5° C)	Max Water Pressure: 60 PSI / 4.14 Bar
Flow Rate :	<1.0 GPM / 3.78 LPM	
Max Static Temp Rise:	up to 16.1° F above ambient - Water will be warm when sitting. Run water until cool.	

Lower Housing contains a 316 bonded stainless steel interior for better UV contact which maximizes killing power by reflecting UV light and the off-centered in/out, side ports allow water to spin through module to eliminate any shadowing or shading during UV contact. Sight port allows consumer to see whether UV lamp is on.

Upper Housing Cap seals module and contains opening and easy-to-clean quartz sleeve where UV lamp is inserted.

UV Lamp with snap-fit top, 4 pin red cord with electrical step-down transformer. Never open upper housing cap. Just simply pull lamp out for removal and snap back in for replacement. Electric connection is simple plug in.



UV Results: "The unit was effective in killing E-coli and significantly reducing the level of micrococcus luteus. Based on previous testing, the unit produces approximately 17,000 µwatt/seconds when operated at a low rate of 0.75 gallons per minute." TRUESDAIL LABORATORIES, INC., TUSTIN, CA, U.S.A. 1989 LABORATORY NO. 26995.

Organism Tested	Control Count	Exposed Count	Percent Reduction of Control
E-Coli	1,400,000	<1*	>99.99992
Micrococcus Luteus	500,000	1170	99.66
Micrococcus Luteus	500,000	850	99.83

The unit was tested by pumping bottled spring water seeded with E-coli (ATCC 8739) and Micrococcus luteus (ATCC 9341) through at a rate of 0.75 gallons per minute. The unit was allowed to warm up five minutes before testing. Samples of the exposed and non exposed water were taken and duplicate plate counts conducted (plate Count Agar, 35C, 48 hours). The results are given above.:

**Warning: The UV lamp is effective through one year of continuous service and must be replaced annually to maintain a 99% effective rate.

ALL FILTRATION PRODUCT PROUDLY MADE & ASSEMBLED IN THE USA



Reverse Osmosis or "RO" has become a term that has slipped into our common language. When you need a tissue and ask for a "Kleenex", its not the brand you need, it's the tissue. It's the same with RO. You may ask for the device or told that you need one, or be considering buying one without understanding what you're asking for. Unlike the tissue, this decision can be impactful.

How does an RO work?

Water is forced by pressure through a semi-permeable membrane while dissolved solids and particulate matters are left behind. The residual contaminants are flushed to the drain. The resulting product water is a cleaner, safer water. These residential units are point of use or sink applications. Asking to do the whole house does not take into account; storing the production water and other drawbacks to the installation and operation of an RO system. Commercial or industrial RO systems can be very complicated, expensive and are designed for specific needs and applications.

Drawbacks to an RO unit

The drawbacks are why EWS provides the consumer a selection of product and why we include this information to help you decide what product is right for you. Here are only a few things to consider.

- **WASTE:** RO can waste up to 20 gallons of water for one produced (our ratio is a low 3 gallons per 1).
- **AGGRESSIVE & CORROSIVE:** RO produce very aggressive water. You can not plumb the filtered water in copper (the water will eat away or leach the copper) and, if cross-connected to other sources such as an ice-maker, it may provide warranty or service issues. When bottled water is produced, one of the methods to produce that water is reverse osmosis, however essential minerals are added back "for a pure, fresh taste" as quoted on any label of Dasani, a bottled water produced throughout the USA by Coca Cola. Please note - all spring waters, bottled at the source, have natural minerals and total dissolved solids of varying degrees, which provide the consumer a choice based on taste. (see Evian, Panna, Pellegrino, etc...)
- If an RO system is working correctly, the water can taste flat (like distilled) or metallic. The water produced may be wet, however your plants may not like it. The water is aggressive, it flushes, and does not allow for assimilation starving the plant which may be a drawback for you as well.

When is an RO appropriate to use?

See the following page on rejection rates and all those scary things. If you're on municipal water, call your utility and request a recent report. Those items on that list are highly regulated. They are either not in your water or municipally treated, and therefore RO can be redundant and unnecessary. If you're on well water, have your water completely and independently tested. Do not trust a local salesman. He's the guy who's usually pushing RO along with the softener, so the RO can take the salt out of the water that the softener put in!

Are you looking for better tasting water? Reverse Osmosis or a Drinking Water Filtration System?

This may be the best place to start and finish. The RO unit would **not** take out taste and odor, chlorine or any VOCs if not for the Carbon (GAC) filter. Maybe you simply need the advanced Essential Drinking Water System (DWS). To upgrade to lead and cysts removal, the RO is fine, but so is the DWS. Bacterial safeguard? Add our UV option to your RO unit or see the complete DWS-UV as an alternative.

□ **Frequent Question - Removal of fluoride?**

- Yes Remove the fluoride, I'm allergic - Use RO as your sink water filtration system to remove fluoride from drinking or cooking
- No Do not remove - I want the fluoride. Then use any of the drinking water system options (DWS or DWS-UV), as mentioned above which will not remove fluoride.

□ **The Bottom Line - Filtration at the Sink - Reverse Osmosis or a Drinking Water Filtration System.**

Drinking water systems take up less room (RO has a storage tank), make as much water as you like (RO have limited production) are easier to install and maintain, can be cross-connected without issues, have less hassles, and are less costly (RO have drain connections, need an air gap by some codes, and make noise during production). However, if an RO is required based on your taste, needs, concerns and/or local water conditions at least you made an informed decision and have been provided a complete selection of superior RO product by EWS for proper application.

Last note: Why only a 3-stage RO System when there are so many systems with more stages?

Most offer more poor filters for replacement and not more or better filtration. The Essential RO3 is a totally complete RO system for municipally treated water, properly specified with the highest capabilities and results. The 4-stage unit is offered (RO4) for municipal water that may be more particulate and simply needs a pre-sediment filter to enhance system longevity or for use on well water of known quality. EWS has 5-stage systems specifically for difficult well water applications only. Correct and truthful specification by EWS.



APPROXIMATE RO REJECTION RATES OF VARIOUS IMPURITIES*

Aluminum	up to 98%	Manganese	up to 98%	Barium	up to 92%	Mercury	up to 97%
Bicarbonate	up to 98%	Nitrate	up to 95%	Bromide	up to 96%	Organic Pesticides	up to 98%
Cadmium	up to 98%	Phosphate	up to 98%	Calcium	up to 98%	Polyphosphate	up to 98%
Chloride	up to 98%	Potassium	up to 98%	Lead	up to 98%	Copper	up to 98%
Radium	up to 98%	Cyanide	up to 96%	Silica	up to 98%	Detergents	up to 98%
Silicate	up to 98%	Fluoride	up to 98%	Sodium	up to 96%	Iron	up to 98%
Sulfate	up to 98%	Radioactivity	up to 97%	Boron	up to 70%	Magnesium	up to 97%
Ammonium	up to 90%	Nickel	up to 98%	Strontium	up to 97%	Silver	up to 96%
Chromium	up to 96%	Chromate	up to 95%	Sulphite	up to 96%	Thiosulfate	up to 98%
Ferrocyanide	up to 98%	Borate	up to 50%	Selenium	up to 95%		
Zinc	up to 98%	Arsenic	up to 95%	Orthophosphate	up to 98%		

* Operational, maintenance, and replacement requirements are essential for the product to perform as tested and specified.

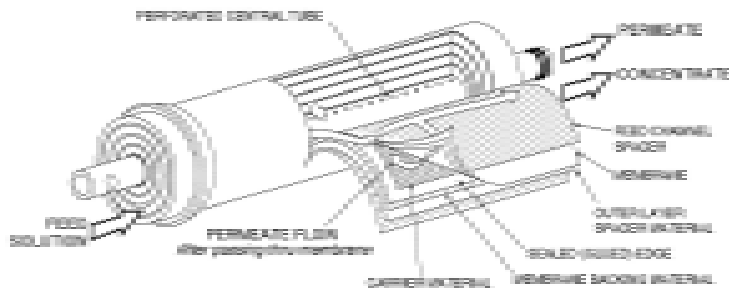
Rates based on the following test feed water:

Temperature: 77°F (25°C) TDS: 500 ppm. Pressure: 60 PSI.

Membranes meet or comply with NSF Standard 58.

This is partial list or sample of impurities. New items are added based on developing protocols and standards.

Go to www.EWSWATER.com for the most complete and updated information.



TFC (Thin Film Composite): TFC membrane is a long-life membrane for non-chlorinated water supplies. A carbon filter must precede the RO element if used on chlorinated feedwater. Appropriate for well water of known quality.



Performance Parameters

F-MEM

Daily Production Rate (To Atmosphere at 4.25 Kg/Sq. cm: 60 PSI: 25° C/ 77° F: 500 mg/l. TDS)	up to 50 GPD
Average TDS Rejection	94-98%
Feed Water Chlorine Tolerance	No unless carbon prefilter
Feed Water Temperature	40° to 85°F (4.4° to 29.5° C)
Feed Water pH	3.0 - 11.0
Feed Water Pressure*	40-60 PSI
Maximum TDS	2000 mg./l
Maximum Hardness**	350 mg./l
Maximum Iron Feed Water	0.1 mg./l
Maximum Manganese Feed Water	0.05 mg./l
Free Chlorine Feed Water	< 1.5 mg./l
System Recovery Rate	20% @ 4.25 Kg./Sq. cm.

*Contact EWS customer service for correct specification if you have low line pressure below 40 psi or high TDS (above 1,000) that affects pressure over membrane. Low pressure below 40 psi calculated over the RO membrane will lower rejection rates.

**Maximum hardness is either 350 mg/l or the equivalent 20.5 grains per gallon. Contact EWS customer service for proper specification if water hardness exceeds the RO tolerance. Water hardness exceeding maximum limits will lower rejection rates.

The advanced F-MEM is a high-density TFC membrane with an integrated RO check valve and direct drain water rejection line. The replacement of the F-MEM ensures a long system life. All RO3 and RO4 systems also include a RO automatic shut-off valve for optimum performance. In all RO3 and RO4 systems, flow rate across the membrane is constant, enabling it to function at its optimum level. As a result, the life of the membrane will be extended as well. Better performance, less maintenance, less wasted water, and a product not subject to the typical leaking of the other manufacturers' units.

ALL FILTRATION PRODUCT PROUDLY MADE & ASSEMBLED IN THE USA



Filter Replacement Sets for All Pre-2012 and 5-Stage RO Sink Filtration Systems

Always order replacements correctly - Find the proper replacement filter set for each model number.

System Model No.	Filter Set Replacement: Item No.
FUGAC150 (Single-Stage)	SET.FUGAC150
FUGAC200	SET.FUGAC200
FUGAC250	SET.FUGAC250
FUGAC300	SET.FUGAC300
FUGAC350	SET.FUGAC350
RU300C18	SET.RU300C18
RU300C18-UV (indicate 2 Pin - White Cord or 4 Pin - Red Cord)	SET.RU300C18-UV -(2.Pin or 4.Pin)
RU400T35	SET.RU400T35
RU400T35-UV (indicate 2 Pin - White Cord or 4 Pin - Red Cord)	SET.RU400T35-UV -(2.Pin or 4.Pin)
RU500T35	SET.RU500T35
RU500T35-UV (indicate 2 Pin - White Cord or 4 Pin - Red Cord)	SET.RU500T35-UV -(2.Pin or 4.Pin)
UU250 (Pre-2011: 2 Pin UV with White Cord)	SET.UU250-2.PIN
UU250 (2011-2012: 4 Pin UV with Red Cord)	SET.UU250-4.PIN
UU350 (Pre-2011: 2 Pin UV with White Cord)	SET.UU350-2.PIN
UU350 (2011-2012: 4 Pin UV with Red Cord)	SET.UU350-4.PIN

Replace*: All filters and UV lamp up to one year. UV Housing every 3 years per mfg. recommendation. Membranes up to every 18 months.

ELF Replacement Filter

 Cost effective replacement for all Everpure¹ H-300, H-100, H-1200 cartridges

Filter Set Replacement: Item No.	
ELF-300K	OEM replacement filter cartridge, replace up to one year.*

Information tearsheet available for the ELF replacement filter upon request.

¹Everpure is a registered trademark of Everpure LLC

*All filter replacement is based on local water conditions and usage. Always replace as needed and not beyond recommended time limit. Applicable to most municipally-treated water. Well water needs to be properly and completely tested before the specification of any filtration and treatment system(s).

ALL FILTRATION PRODUCT PROUDLY MADE & ASSEMBLED IN THE USA




All Product Tearsheets Available Online @ ewswater.com



ELF-300K Replacement Filter

High performance OEM filter for popular Everpure® cartridges. Better filter capacity. Better flow rates. Better value.

Completely compatible and interchangeable with the following Everpure cartridges:

- H-300
- H-1200 (need 2)
- H-104 (allow additional 6" clearance)

ELF features:

- Bacteriostatic agent to combat the growth of bacteria within the cartridge.
- Better 2.8 gallons per minute (gpm) flow rate (vs. 0.5 gpm)
- Better 1,500 gallon capacity (vs. 300 gallon capacity)
- Made in the USA, meets or exceeds all compliances.

The ELF reduces² the following contaminants:

- Lead and cysts (giardia and cryptosporidium).
- Volatile organic compounds (VOCs) and THMs.
- Chlorine taste and odor.
- Dirt, cloudiness, and mold and algae.
- Oxidized iron, manganese, and sulfides.
- Scale build-up in appliances that use water.
- Particles down to 1 micron (100 times smaller than a human hair).

^oEverpure is a registered trademark of Everpure LLC.

Chlorine (a common disinfectant used in USA tap water) and its byproducts are known carcinogens. Drinking them, or inhaling and absorbing them while showering or bathing, is not recommended. The New York State Dept. of Health and President's Cancer Panel recommend water filtration to reduce or eliminate our exposure to these substances.*



PROTECTION FOR YOU, YOUR HOME, AND OUR PLANET.

The **ELF-300K** is designed for today's adverse water conditions and anticipated conditions in the future. This single stage filter is capable of handling chlorine, VOCs, THMs, lead, cysts, and more.²The result is truly clean water you can trust and enjoy.



ESSENTIAL DRINKING WATER.

Our **ESSENTIAL** drinking water filtration systems utilize our full bed depth, fully compliant, USA-made filters to handle difficult contaminants like chloramine (chlorine and ammonia compound). It is the very first sink filtration system that effectively protects you from chloramine, chlorine, THMs, lead, cysts, bacteria¹ and much more.²

***FILTER ALL THE WATER IN YOUR HOME WITH ONE SYSTEM.** Every sink, shower, and bath in your home could provide you with chlorine-free & pollutant-free water. No hassle, no maintenance, no salts or chemicals, and trusted by hospitals, health care centers, military, and private homes worldwide. For more information on EWS Central Water Filtration, visit us online at www.ewswater.com or call EWS customer service at 702.256.8182 (Mon.-Fri. 8.30 am - 4.30 pm Pacific Time).



TECHNICAL INFORMATION

ELF-300K OEM REPLACEMENT FOR EVERPURE CARTRIDGES

MODEL #: ELF-300K

All Product Tearsheets Available Online @ ewswater.com

SYSTEM SPECIFICATIONS

OPERATION TEMPERATURE: Maximum 100° F (38° C) / Minimum 35° F (2° C)

OPERATION PRESSURE: Maximum 125 psi / Minimum 30 psi

SYSTEM FLOW RATE: 2.8 gallons per minute (gpm)

Do not use with water that is microbiologically unsafe or of unknown quality without adequate disinfection before or after the system. Replace your filter annually or as needed (do not exceed 1 year). Install in cold water supply only. Install in compliance with local and state regulations.

All installation instructions, service manuals, technical and product information is available online at www.EWSWATER.com

FILTER SPECIFICATIONS

ITEM #: ELF-300K

DESCRIPTION: Post-Filter Carbon Block (1 Micron)

PURPOSE: Advanced filter for chlorine, lead, cysts, VOCs, and more.

FEATURES & BENEFITS: Increased surface area, enhanced adsorption, excellent performance in a carbon block form.

CONSTRUCTION: Activated carbon block with KDF.

KDF 55 medium was designed specifically for removing or reducing chlorine and water-soluble heavy metals. It controls scale, bacteria, and algae.

SERVICE LIFE: 1 year†
MAX. FLOW: 2.8 GPM / 7.57 LPM
MAX. PRESSURE: 125 PSIG / 8.6 Bar
TEMP. RANGE: 35-100° F / 2-38° C

ELF-300K PERFORMANCE DATA

MICRON RATING: >99% @ 1 micron
CHLORINE REDUCTION: >95% at 20,000 gallons
LEAD REDUCTION: >90% at 3,000 gallons
CYST REDUCTION: >99.99%

**SERVICE LIFE ON FILTERS:
UP TO 1 YEAR.* REPLACE YOUR
FILTERS ANNUALLY OR AS NEEDED.
DO NOT EXCEED 1 YEAR.**

†Filter service life is based on local water conditions and usage.

¹ UV upgraded systems only.

² These substances may or may not be in your water. Please ensure this is the correct system for your needs. Please see included instructions for proper installation and usage.

FILTER SIZE: 3.5" x 15"
SHIPPING SIZE: 6" x 6" x 20"
SHIPPING WEIGHT: 4 lbs.



COMPONENT

This filter element tested and certified under ANSI/NSF Standard 42 & 53 for materials only.

Fully Compliant
with California
No-Lead Standards.

Pictured at Right:

The **ELF-300K**
OEM filter
replacement.



MADE IN THE USA

CALL EWS CUSTOMER SERVICE: 702.256.8182 (MONDAY-FRIDAY 8.30 AM-4.30 PM PACIFIC TIME)

FAX: 702.256.3744 EMAIL: CUSTOMERSERVICE@EWSWATER.COM

WWW.EWSWATER.COM

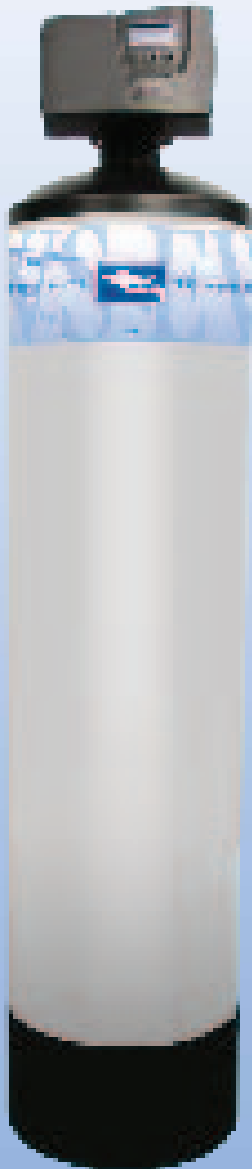
ALL FILTRATION PRODUCT PROUDLY MADE & ASSEMBLED IN THE USA



EWS, INC.

ENVIRONMENTAL WATER SYSTEMS

PROFESSIONAL SERIES



RESIDENTIAL WATER FILTRATION

- **SPECTRUM WHOLE HOME CENTRAL WATER FILTRATION SYSTEMS**
- **SPECTRUM CHLORAMINE SERIES**
- **SPECTRUM SOFTENER**
- **HEATER GUARD**
- **POINT OF ENTRY FILTER UNIT**

ewswater.com

O: 702.256.8182 (M-F 8:30am-4:30pm PST)

F: 702.256.3744

E: customerservice@ewswater.com

Complete Product Booklets and Service Guides for each system is available online and through customer service.

Information includes all schematics, technical information, removal capabilities, how to setup, install & startup each system as well as any troubleshooting and any other information we could think of in order to help you.

Highest Quality Product & Award Winning Customer Service Since 1987



THE SPECTRUM IS THE RIGHT PRODUCT FOR YOU, YOUR FAMILY & YOUR HOME.

SPECTRUM – THE PROFESSIONAL SERIES

Our most versatile systems, showcased by the National Association of Home Builders (NAHB) and New American Showcase Home. World-class EWS performance in a contractor-friendly install package. All Spectrum Series systems utilize our advanced, user-friendly digital valve head and adjustable bypass, which fits over 90% of homes in the United States and accommodates line sizes 3/4" to 1 1/2" without inhibiting flow rate or pressure. A Spectrum installation is a simple process, much like installing a water heater. Once installed, the self-cleaning Spectrum systems provide maintenance-free filtration for years, allowing you to enjoy the convenience, protection, and health benefits of the highest quality filtered water at every tap, every day.

DO YOU HAVE HARD WATER?

YES

Some of us have harder water than others, and EWS generally considers 6 grains (102 ppm or mg/l) of hardness to be on the lower end of hard water. Select YES if you have hard water issues such as excessive spotting or mineral build-up in pipes, faucets and water heaters.

NO

DOES YOUR CITY USE CHLORINE OR CHLORAMINE?

EWS SERIES Whole Home Water Filtration and Conditioning for Hardness Minerals.

SELECT BY USAGE.**

CHLORAMINE

EWS CC 1465

Model #: EWS-CC-1465-7
Select this system if you have ALL of the following:**

- 3 bathrooms or less
- 4 people or less
- 1 water heater
- Up to 2 ppm chloramine

EWS CC 1865

Model #: EWS-CC-1865-7
Select this system if you have ANY of the following:**

- 3+ bathrooms
- 4+ people
- 1+ water heater
- 2+ ppm chloramine

CHLORINE

EWS SPECTRUM

Model #: CS-EWS-1354-7000 Pro Series. Our most versatile unit. Showcased by NAHB. Adjustable for 3/4" - 1 1/2" main water line. Up to 35 gpm.

The EWS Spectrum is the appliance that is applicable to the vast majority of homes on municipal water in the United States.

DOES YOUR CITY USE CHLORINE OR CHLORAMINE?

CWL SERIES Whole Home Water Filtration for Water Without Hardness Issues.

SELECT BY USAGE.**

CHLORINE

CWL SPECTRUM

Model #: CS-CWL-1354-7000 Pro Series. Our most versatile unit. Showcased by NAHB. Adjustable for 3/4" - 1 1/2" main water line. Up to 35 gpm.

CHLORAMINE

CWL CC 1465

Model #: CWL-CC-1465-7
Select this system if you have ALL of the following:**

- 3 bathrooms or less
- 4 people or less
- 1 water heater
- Up to 2 ppm chloramine

CWL CC 1865

Model #: CWL-CC-1865-7
Select this system if you have ANY of the following:**

- 3+ bathrooms
- 4+ people
- 1+ water heater
- 2+ ppm chloramine



About 22% of people have tap water treated with chloramine (a corrosive combination of chlorine and ammonia), which requires more contact time (vs. chlorine) through a specialized filtration media to effectively filter it out of the water. EWS has designed four systems specifically for handling chloramine, which use our Pro Series valve that accommodates 3/4" - 1 1/2" main water lines up to 35 gpm. **Not sure if you have chloramine? Call your water district or EWS Customer Service at 702.256.8182 for friendly assistance. **Important Note:** Our specialized chloramine removal media (CRM) is incredibly effective on chlorine as well, so when in doubt, err on the side of caution and select a Chloramine System.

STOP

ARE YOU ON WELL WATER?

If you are on private or community well water, you need information to determine any water issues and their solutions. Well water requires complete and independent testing. Call EWS Customer Service at 702.256.8182 or visit EWSWATER.COM for more information.

Whole Home Water Filtration Systems - "Central Water"
Professional Series - EWS & Chloramine Series Whole Home Filtration
EWS Spectrum Series - Whole Home Water Filtration & Conditioning
 Water filtration to the entire home and the physical conditioning of hardness minerals


EWS Spectrum

EWS Spectrum Series* Model No.	Installed Main Line Size	Service Flow Rate	Replacement Filtration Up to 10 years*
CS-EWS-1354-7000	3/4" - 1 1/2"	up to 35 gpm	Replacement Kit Only: ICN/GAC-SPECTRUM Complete Tank w/ Kit: T-ICN/GAC-SPECTRUM

*The Professional's #1 Choice
As Showcased by the National Association of Home Builders*

Please see
"HOW TO SELECT - THE SPECTRUM IS THE RIGHT PRODUCT FOR YOU, YOUR FAMILY & YOUR HOME"
 to assist you with the proper specification.

EWS CHLORAMINE SERIES SYSTEMS



EWS Chloramine Spectrum

EWS Chloramine Spectrum Series* Model No.	Installed Main Line Size	Service Flow Rate	Replacement Filtration Up to 7 years*
EWS-CC-1465-7	3/4" - 1 1/2"	up to 35 gpm	Replacement Kit Only: ICN/CC1465 Complete Tank w/Kit: T-ICN/CC1465
EWS-CC-1865-7	3/4" - 1 1/2"	up to 35 gpm	Replacement Kit Only: ICN/CC1865 Complete Tank w/Kit: T-ICN/CC1865

The EWS-CC-1865-7 is the Best Selling and #1 Choice since introducing the EWS Chloramine Spectrum Series

All Chloramine Systems to be assembled on site

Please Note:
 The Chloramine Series will have the same great performance as all EWS whole home water filtration systems on chlorine, VOCs, pollutants and more. The Chloramine Series is engineered to handle chloramine (the combination of ammonia and chlorine) making this series complete for all municipal purpose*. Whether the municipal water district is considering the use of chloramine or is using chloramine full-time, part-time or in combination with other methods - you can err on the side of caution and confidently specify the Chloramine Series which will always be applicable.

***CAUTION, PLEASE READ FOR PROPER SPECIFICATION:**

Applicable to most municipally-treated water. Well water needs to be properly and completely tested before the specification of any filtration and treatment system(s).

Water being treated with Chloramine (combination of chlorine and ammonia) will exhaust EWS/CWL Series filter media prematurely. EWS/CWL Chloramine Spectrum Series is the correct specification for municipal water using this method of disinfection. Useful life based on proper specification, application, installation, usage and local water conditions.

Any EWS/CWL System can be combined with EWS softeners (hot-side only) and/or additional Essential sink filtration product based on consumer preference, need, and/or based on the local water conditions.

Complete information and specifications are available on every product in the EWS Product Catalog and is available upon request through EWS Representation, EWS Customer Service or online @ www.ewswater.com.

ALL FILTRATION PRODUCT PROUDLY MADE & ASSEMBLED IN THE USA


EWS PRO SERIES

Whole Home Water Filtration Systems - "Central Water"
CWL Spectrum Series - Whole Home Water Filtration

Water filtration to the entire home where water hardness is not an issue

CWL Spectrum Series* Model No.	Installed Main Line Size	Service Flow Rate	Replacement Filtration Up to 10 years*
CS-EWS-1354-7000	3/4" - 1 1/2"	up to 35 gpm	Replacement Kit Only: M/GAC-SPECTRUM Complete Tank w/ Kit: T-M/GAC-SPECTRUM

*The Professional's #1 Choice
As Showcased by the National Association of Home Builders*



CWL Spectrum

Please see

"HOW TO SELECT - THE SPECTRUM IS THE RIGHT PRODUCT FOR YOU, YOUR FAMILY & YOUR HOME"
to assist you with the proper specification.

CWL CHLORAMINE SERIES SYSTEMS

CWL Chloramine Spectrum Series* Model No.	Installed Main Line Size	Service Flow Rate	Replacement Filtration Up to 7 years*
CWL-CC-1465-7	3/4" - 1 1/2"	up to 35 gpm	Replacement Kit Only: M/CC1465 Complete Tank w/Kit: T-M/CC1465
CWL-CC-1865-7	3/4" - 1 1/2"	up to 35 gpm	Replacement Kit Only: M/CC1865 Complete Tank w/Kit: T-M/CC1865



CWL Chloramine Spectrum

All Chloramine Systems to be assembled on site

Please Note:

The Chloramine Series will have the same great performance as all EWS whole home water filtration systems on chlorine, VOCs, pollutants and more. The Chloramine Series is engineered to handle chloramine (the combination of ammonia and chlorine) making this series complete for all municipal purpose*. Whether the municipal water district is considering the use of chloramine or is using chloramine full-time, part-time or in combination with other methods - you can err on the side of caution and confidently specify the Chloramine Series which will always be applicable.

***CAUTION, PLEASE READ FOR PROPER SPECIFICATION:**

Applicable to most municipally-treated water. Well water needs to be properly and completely tested before the specification of any filtration and treatment system(s).

Water being treated with Chloramine (combination of chlorine and ammonia) will exhaust EWS/CWL Series filter media prematurely. EWS/CWL Chloramine Spectrum Series is the correct specification for municipal water using this method of disinfection. Useful life based on proper specification, application, installation, usage and local water conditions.

Any EWS/CWL System can be combined with EWS softeners (hot-side only) and/or additional Essential sink filtration product based on consumer preference, need, and/or based on the local water conditions.

Complete information and specifications are available on every product in the EWS Product Catalog and is available upon request through EWS Representation, EWS Customer Service or online @ www.ewswater.com.

ALL FILTRATION PRODUCT PROUDLY MADE & ASSEMBLED IN THE USA




SPECTRUM Central Water

The most versatile and best-selling whole home filtration appliance in the USA. And for good reason.

- Filter all the water in your home with one system.
- World-class EWS quality and performance.
- Trusted by hospitals, health care centers, military, and hundreds of thousands of private homes worldwide.
- Inhibits hard water build-up in pipes and on surfaces.
- Absolutely no salts, chlorides, metal resins, or chemicals.
- Hassle-free and low maintenance.
- Quick and easy install, just like a water heater.
- Made in the USA, meets or exceeds all compliances.
- Protects you and your family from chlorine, THMs, VOCs, pesticides, and more than 80,000 chemicals in tap water.¹

Showcased by  **NAHB**
NATIONAL ASSOCIATION
OF HOME BUILDERS

Chlorine (a common disinfectant used in USA tap water) and its byproducts are known carcinogens. Drinking them, or inhaling and absorbing them while showering or bathing, is not recommended. The New York State Dept. of Health and President's Cancer Panel recommend water filtration to reduce or eliminate our exposure to these substances.



AN EASY WAY TO GET HEALTHY.

We absorb more chlorine in a 10 minute shower than if we drank a gallon of tap water. With the **SPECTRUM**, not only can you drink delicious filtered water at any sink, but it prevents you and your family from absorbing and inhaling carcinogenic chlorine while showering and bathing. Enjoy better skin, hair, and overall health.



HASSLE-FREE ENJOYMENT.

No costly monthly bottle delivery. No frequent filter replacements. No taking up valuable refrigerator or countertop space. The **SPECTRUM** is a self-cleaning, high quality, USA-made appliance. The only maintenance is a simple filtration media replacement once up to every 10 years.‡



REAL PROTECTION FOR YOU, YOUR FAMILY, AND YOUR HOME.

The **SPECTRUM** is designed with our proprietary high-grade, biodegradable filtration media and is the first system that adapts to suit almost all plumbing line sizes and flow rates. Effectively protects you from chlorine, THMs, and 80,000+ chemicals commonly found in tap water.¹ The result is truly clean water you can trust.



HELP FOR HARD WATER.

The **EWS SPECTRUM** inhibits scale build-up in pipes and water heaters, makes it easier to wipe off water spots, and enables you to use less soap – all without salts, chemicals, or brine discharge.

If you do not have hard water issues, please select a **CWL SPECTRUM** for the same high-end filtration, but without the hard water treatment.

TECHNICAL INFORMATION

SPECTRUM WHOLE HOME FILTRATION APPLIANCES

MODEL #s: CS-EWS-1354-7000 and CS-CWL-1354-7000

All Product Tearsheets Available Online @ ewswater.com



SYSTEM SPECIFICATIONS

OPERATION TEMPERATURE: Maximum 100° F (38° C) / Minimum 40° F (4° C)

OPERATION PRESSURE: Maximum 75 psi / Minimum 30 psi

SYSTEM FLOW RATE: Up to 35 gallons per minute (gpm)

Do not use with water that is microbiologically unsafe or of unknown quality without adequate disinfection before or after the system.

Replace your filtration media up to every 10 years or as needed (do not exceed 10 years). Install in cold water feed applications only. Install in compliance with local and state regulations.

All installation instructions, service manuals, technical and product information is available online at www.EWSWATER.com

MODEL

CS-EWS-1354-7000

REPLACEMENT FILTER ITEM

T-ICN/GAC-SPECTRUM

CS-CWL-1354-7000

T-M/GAC-SPECTRUM

**SERVICE LIFE ON FILTRATION MEDIA:
UP TO 10 YEARS.* REPLACE YOUR
FILTRATION AS NEEDED. DO NOT
EXCEED 10 YEARS.**

Fully Compliant
with California
No-Lead Standards.

FILTER SPECIFICATIONS

HIGHEST GRADE GRANULAR ACTIVATED CARBON

DESCRIPTION: 85 lbs. (2.5 cubic ft.) of the highest grade carbon available. Iodine rating minimum of 1200.

PURPOSE: Filters out chlorine, VOCs, THMs, and particulates down to 20 microns (smaller than a human hair).

FEATURES & BENEFITS: Provides truly clean, safe water for drinking, cooking, showering, bathing, absorption, and inhalation.

CONSTRUCTION: 100% pure proprietary blend of biodegradable and compostable activated carbon. No fillers or binders. No chemical additives or metal resins. Meets FDA requirements for all food and beverage contact. Meets or exceeds NSF compliance Standard 42.

SERVICE LIFE: 10 years[‡]

MAX. FLOW: 35 GPM / 132.5 LPM

MAX. PRESSURE: 75 PSIG / 8.6 Bar

TEMPERATURE RANGE: 40-100° F / 4-38° C

ICN MODULE (EWS SPECTRUM ONLY)

DESCRIPTION: Full-flow riser with two ICN conditioners.

PURPOSE: Physically conditions hardness minerals to prevent hard scale build-up.

FEATURES & BENEFITS: Prevents scale build-up in pipes and water heaters, and makes it easier to wipe up water spotting.

CONSTRUCTION: Riser manifold is food-grade PVC. EWS exclusively engineered ICN is copper cell comprised of charged dissimilar metals.

SERVICE LIFE: 10 years[‡] MAX. FLOW: 35 GPM / 132.5 LPM

MAX. PRESSURE: 75 PSIG / 8.6 Bar

TEMPERATURE RANGE: 40-100° F / 4-38° C

[‡]Filter service life is based on local water conditions and usage.

SHIPPING CARTON SIZE: 15" W x 15" L x 65" H SHIPPING CARTON WEIGHT: 150 lbs.

SYSTEM SIZE: 13" W x 65" H

¹ These substances may or may not be in your water. Please ensure this is the correct system for your needs. Please see included instructions for proper installation and usage.

Pictured at Right: The **CWL SPECTRUM**, perfect for those with no real or perceived issues with water hardness (i.e. spots, build-up, scale).

The **CWL SPECTRUM** provides the same high-end filtration and quality performance as the **EWS SPECTRUM**. The only difference is that the **CWL SPECTRUM** does not contain our ICN module, which is designed to assist with hard water problems.



WHAT IS CHLORAMINE?

About 22% of people have tap water treated with chloramine (a corrosive combination of chlorine and ammonia), which requires more contact time (vs. chlorine) through specialized filtration media to effectively filter it out of the water. EWS has designed two systems specifically for handling chloramine. **Not sure if you have chloramine?** Call your water district or EWS Customer Service at 702.256.8182 for friendly assistance.

Our specialized chloramine removal media (CRM) is incredibly effective on chlorine as well, so if in doubt, err on the side of caution and select a Chloramine System.

DOES YOUR CITY USE CHLORAMINE?

Pictured at Right: The **SPECTRUM CHLORAMINE SERIES**, the first and only whole home filtration appliance designed specifically for the removal of chloramine – a corrosive chlorine/ammonia compound that is **toxic to humans, lethal to marine life, and destructive to pipes and appliances**. Chloramine requires a specific media, quantity, and contact time to be effectively removed for safe drinking, showering, and bathing water.



The SPECTRUM comes fully assembled and includes:

fully assembled tank with ICN riser manifold (EWS only) and filtration media inside, digital valvehead, built-in bypass, three adaptors (for 1", 1 1/4", and 1 1/2" plumbing lines), white cover, 24v transformer, and complete service guide.



MADE IN THE USA

CALL EWS CUSTOMER SERVICE: 702.256.8182 (MONDAY-FRIDAY 8.30 AM-4.30 PM PACIFIC TIME)

FAX: 702.256.3744 EMAIL: CUSTOMERSERVICE@EWSWATER.COM

WWW.EWSWATER.COM



All Product Tearsheets Available Online @ ewswater.com

SPECTRUM Chloramine Series

Engineered to handle the tough task of removing chloramine, a toxic chlorine-ammonia compound in our tap water.

- Filter all the water in your home with one system.
- World-class EWS quality and performance.
- Trusted by hospitals, health care centers, military, and hundreds of thousands of private homes worldwide.
- Inhibits hard water build-up in pipes and on surfaces.
- Absolutely no salts, chlorides, metal resins, or chemicals.
- Hassle-free and low maintenance.
- Quick and easy install, just like a water heater.
- Made in the USA, meets or exceeds all compliances.
- Protects you and your family from chlorine, THMs, VOCs, pesticides, and more than 80,000 chemicals in tap water.†

Showcased by  **NAHB**
NATIONAL ASSOCIATION
OF HOME BUILDERS

Chlorine (a common disinfectant used in USA tap water) and its byproducts are known carcinogens. Drinking them, or inhaling and absorbing them while showering or bathing, is not recommended. The New York State Dept. of Health and President's Cancer Panel recommend water filtration to reduce or eliminate our exposure to these substances.



AN EASY WAY TO GET HEALTHY.

We all know how bad chlorine is for us, but chloramine (a chlorine-ammonia compound) is even worse. With the **SPECTRUM CHLORAMINE**, not only can you drink delicious filtered water at any sink, but it prevents you and your family from absorbing and inhaling carcinogenic chlorine and chloramine while showering and bathing. Enjoy better skin, hair, and overall health.



HASSLE-FREE ENJOYMENT.

No costly monthly bottle delivery. No frequent filter replacements. No taking up valuable refrigerator or countertop space. The **SPECTRUM CHLORAMINE** is a self-cleaning, high quality, USA-made appliance. The only maintenance is a simple filtration media replacement once up to every 10 years.‡



REAL PROTECTION FOR YOU, YOUR FAMILY, AND YOUR HOME.

The **SPECTRUM CHLORAMINE** is designed with our proprietary high-grade, biodegradable filtration media and adapts to suit almost all plumbing line sizes. Effectively protects you from chloramine, chlorine, THMs, and 80,000+ chemicals commonly found in tap water.† The result is truly clean water you can trust.



HELP FOR HARD WATER.

The **EWS SPECTRUM CHLORAMINE** inhibits scale build-up in pipes and water heaters, makes it easier to wipe off water spots, and enables you to use less soap – all without salts, chemicals, or brine discharge.

If you do not have hard water issues, please select a **CWL SPECTRUM CHLORAMINE** for the same high-end filtration without hard water treatment.

TECHNICAL INFORMATION

SPECTRUM CHLORAMINE WHOLE HOME FILTRATION APPLIANCES

EWS MODEL #s: EWS-CC-1465-7 and EWS-CC-1865-7

CWL MODEL #s: CWL-CC-1465-7 and CWL-CC-1865-7



All Product Tearsheets Available Online @ ewswater.com

SYSTEM SPECIFICATIONS

OPERATION TEMPERATURE: Maximum 100° F (38° C) / Minimum 40° F (4° C) OPERATION PRESSURE: Maximum 75 psi / Minimum 30 psi
 SYSTEM FLOW RATE: Up to 35 gallons per minute (gpm)

Do not use with water that is microbiologically unsafe or of unknown quality without adequate disinfection before or after the system.
 Replace your filtration media up to every 10 years or as needed (do not exceed 10 years). Install in cold water feed applications only. Install in compliance with local and state regulations.

All installation instructions, service manuals, technical and product information is available online at www.EWSWATER.com

MODEL #	REPLACEMENT FILTER ITEM #
EWS-CC-1465-7	T-ICN/CC1465
EWS-CC-1865-7	T-ICN/CC1865
CWL-CC-1465-7	T-M/CC1465
CWL-CC-1865-7	T-M/CC1865

**SERVICE LIFE ON FILTRATION MEDIA:
 UP TO 10 YEARS.* REPLACE YOUR
 FILTRATION AS NEEDED. DO NOT
 EXCEED 10 YEARS.**

Fully Compliant
 with California
 No-Lead Standards.

FILTER SPECIFICATIONS

HIGHEST GRADE GRANULAR ACTIVATED CHLORAMINE REDUCTION MEDIA

DESCRIPTION: 99 lbs./3 cubic ft. (EWS and CWL-1465) or 165 lbs./5 cubic ft. (EWS and CWL 1865) of extremely dense, highest grade carbon available, specifically processed for the removal of chloramine. Iodine rating minimum of 1200.

PURPOSE: Filters out chloramine, chlorine, VOCs, THMs, and particulates down to 20 microns (smaller than a human hair).

FEATURES & BENEFITS: Provides truly clean, safe water for drinking, cooking, showering, bathing, absorption, and inhalation.

CONSTRUCTION: 100% pure proprietary blend of biodegradable and compostable activated carbon. No fillers or binders. No chemical additives or metal resins. Meets FDA requirements for all food and beverage contact. Meets or exceeds NSF compliance Standard 42.

SERVICE LIFE: 10 years[‡] **MAX. FLOW:** 35 GPM / 132.5 LPM **MAX. PRESSURE:** 75 PSIG / 8.6 Bar **TEMP. RANGE:** 40-100° F / 4-38° C

ICN MODULE (EWS SPECTRUM CHLORAMINE ONLY)

DESCRIPTION: Full-flow riser with two (EWS-1465) or three (EWS-1865) ICN conditioners.

PURPOSE: Physically conditions hardness minerals to prevent hard scale build-up.

FEATURES & BENEFITS: Prevents scale build-up in pipes and water heaters, and makes it easier to wipe up water spotting.

CONSTRUCTION: Riser manifold is food-grade PVC. EWS exclusively engineered ICN is copper cell comprised of charged dissimilar metals.

SERVICE LIFE: 10 years[‡] **MAX. FLOW:** 35 GPM / 132.5 LPM **MAX. PRESSURE:** 75 PSIG / 8.6 Bar **TEMP. RANGE:** 40-100° F / 4-38° C

[‡]Filter service life is based on local water conditions and usage.

SHIPPING SIZE: Pallet of 1-18" x 18" x 66" box and several accessory boxes

EWS/CWL-1465 SHIPPING CARTON WEIGHT: 155 lbs. **EWS/CWL-1865 SHIPPING CARTON WEIGHT:** 215 lbs.

EWS/CWL-1465 SYSTEM SIZE: 14" D x 75" H **EWS/CWL-1865 SYSTEM SIZE:** 18" D x 75" H

¹ These substances may or may not be in your water. Please ensure this is the correct system for your needs. Please see included instructions for proper installation and usage.

WHAT IS CHLORAMINE?

About 22% of people have tap water treated with chloramine (a corrosive combination of chlorine and ammonia), which requires more contact time (vs. chlorine) through specialized filtration media to effectively filter it out of the water. EWS has designed four systems specifically for handling chloramine. **Not sure if you have chloramine?** Call your water district or EWS Customer Service at 702.256.8182 for friendly assistance.

Our specialized chloramine removal media (CRM) is incredibly effective on chlorine as well, so if in doubt, err on the side of caution and select a Chloramine System.

DOES YOUR CITY USE CHLORAMINE?

Pictured at Right: The **CHLORAMINE SERIES**, the first and only whole home appliance designed specifically for the removal of chloramine, a persistent and corrosive compound of chlorine and ammonia that is **toxic to humans, lethal to marine life, and destructive to pipes and appliances**. Chloramine requires a specific media, quantity, and contact time to be effectively removed for safe drinking, showering, and bathing water.



The **SPECTRUM CHLORAMINE** comes partially assembled with: assembled tank with ICN riser manifold (EWS only inside, filtration media, digital valvehead, built-in bypass, three adaptors (for 1", 1 1/4", and 1 1/2" plumbing lines), 24v transformer, and complete service guide.

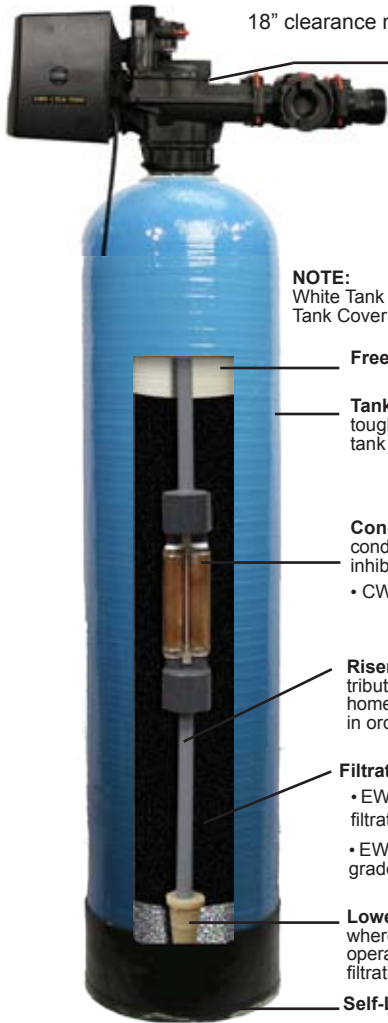


MADE IN THE USA

CALL EWS CUSTOMER SERVICE: 702.256.8182 (MONDAY-FRIDAY 8.30 AM-4.30 PM PACIFIC TIME)

FAX: 702.256.3744 EMAIL: CUSTOMERSERVICE@EWSWATER.COM

WWW.EWSWATER.COM



18" clearance needed from center of tank for proper installation

Valve, Bypass Valve and threaded Adaptors (side view)

Highly Recommended:

Stainless steel corrugated water connectors, PEX or PVC Sch 40 have a flexible capability that may assist with issues where the rough and finish measurements are slightly off or where pressure surges/spikes or back pressure occur. This flexible connection may prevent tank and valve issues where rigid or hard pipe create problems over time. Perform all plumbing according to state or local codes.

NOTE:

White Tank Cover comes with all EWS & CWL Spectrum Systems (not shown)
Tank Cover Not Available with Spectrum Chloramine Systems

Freeboard: Space allows media space to lift during backwash.

Tank: Non-corrosive, seamless, one-piece blow molded with tough epoxy and fiberglass outer laminate. Note: actual color of tank may vary.

Conditioning (EWS Series Only): ICN Riser Manifold ICN conditioners that catalytically suspend hardness minerals so they inhibit adhesion to surfaces.

• CWL Series does not contain this part.

Riser: Specialty PVC tubing food & beverage compliant for distribution of filtered water flow up through the riser and out to the home or water down through the riser to lift and properly backwash in order to self clean filtration media

Filtration: EWS proprietary blended carbon based filtration media

- EWS and CWL Spectrum Systems contain our high grade GAC filtration media.
- EWS and CWL Chloramine Spectrum Systems contain our high grade chloramine reduction filtration media.

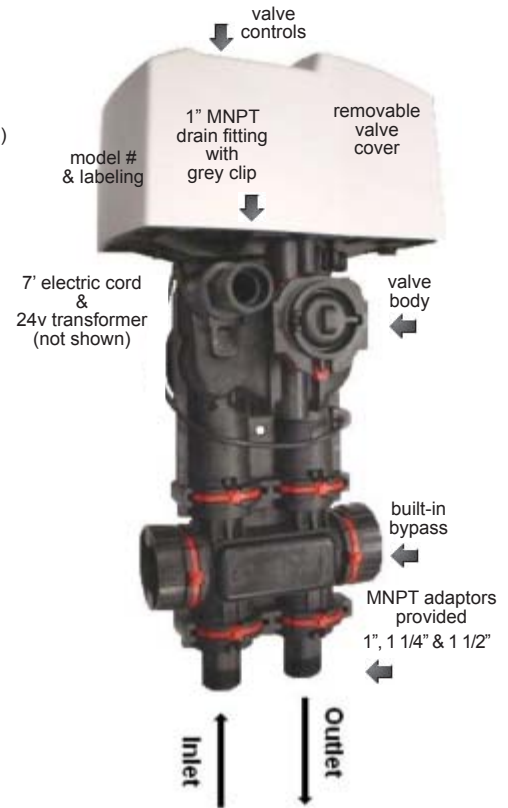
Lower Riser Screen and Underbed: Maintains a closed system where media does not escape into home plumbing during normal operation. The underbed provides greater water distribution during filtration and backwash.

Self-Leveling Base

For Illustration Purposes Only: Cut-away of EWS Chloramine Spectrum System

For Illustration Purposes Only: Top View

Spectrum Valve with Integrated Bypass and Adaptors included with all EWS & CWL Spectrum and Chloramine Systems



EWS (CWL) ¹ Series System Model #	Filter Media ² cubic feet / weight (lbs)	ICN quantity EWS Only	Conditions ³ Hardness up to	Installed Main Line Size	Service Flow Rates GPM	Backwash Flow Rates GPM	Bypass Included or Install Needed	Install Size ⁴ H x W x D
CS-EWS-1354-7000 Pro Series - EWS Spectrum	2.5 / 85	2	30 grains	3/4" up to 1 1/2"	up to 35	7	included	62"x13"x20"
EWS Chloramine Spectrum Series EWS-CC-1465-7	3.0 / 99	2	30 grains	3/4" up to 1 1/2"	up to 35	7	included	73"x14"x20"
EWS-CC-1865-7	5.0 / 165	3	30 grains	3/4" up to 1 1/2"	up to 35	7	included	73"x18"x20"

¹ EWS and CWL models are the same with the exception that the CWL Series does not condition hardness minerals in water and does not contain the ICN conditioners. All other specifications, information and installation are the same.

² Applicable to most municipally-treated water. Water being treated with Chloramine (combination of chlorine and ammonia) will exhaust this filter media prematurely. EWS Chloramine Spectrum Series is the correct specification and can be found in the Professional Series Section. Useful life based on proper specification, application, installation, usage and local water conditions.

³ Calculate Hardness: If you get a number in PPM (parts per million) or Mg/L (milligrams per liter) simply divide the number by 17.1 to calculate the grains (gpg or grains per gallon) of hardness.

NOTE: Water hardness is comprised of the naturally found calcium and magnesium minerals and not considered a contaminant. Hardness up to a certain amount is only an aesthetic. Most appliances, heaters and fixtures have compensated and suggest the proper routine maintenance for the possible buildup. Soaps no longer need lather and all use concentrated forms where less is required. Water spots should be considered like dust in the air, you can not totally eliminate and a simple wipe off should be routine.

⁴ Installation size may vary. The use of flexible stainless piping is highly recommended. This may prevent pressure issues, eliminates the cost of unions on installed bypasses, lowers labor costs and require less clearance. See Service Guide for additional information.



Heater Guard
 Sediment Protection for all Tankless or Tank-Type Water Heaters

Heater Guard Model No.	Inlet to Heater Line Size	Service Flow Rate	Replacement Filter Up to one year*
EWS-HEATER-GUARD-3/4	3/4" - 1"	up to 9.5 gpm	BB-HEATER-GUARD-3/4
EWS-HEATER-GUARD-1.5	1 1/4" - 1 1/2"	up to 20 gpm	BB-HEATER-GUARD-11/2



EWS-Heater-Guard-3/4"

Point of Entry Cartridge Water Filtration
 Limited Usage, Limited Flow Rate and Replacement Cartridges

Model No.	Installed Main Line Size	Service Flow Rate	Replacement Filters (need 2 filters) Up to one year*
CS-BB-FUGAC200A-1	3/4" - 1"	up to 10 gpm	BB-PRESED-50-SW BB-GACB-10RFA

Compare to CWL Series of whole home water filtration



CS-BB-FUGAC200A-1

Spectrum Softener
 Ion-Exchange, Salt (sodium or potassium chloride) Softening, Not a Drinking/Filtration System

Spectrum Softener Model No.	Installed Main Line Size	Service Flow Rate	Replacement Resin As needed or up to 5 years*
CS-TT1054-7000 (Spectrum Soft)	3/4" - 1 1/2"	up to 25 gpm	RESIN-SPECTRUM

Coordinated softener with all Spectrum Whole Home Filtration Series
 See WARNINGS related to softeners and their use.



CS-TT1054-7000

Softener System Model #	Resin* cubic feet	Softens** Hardness up to	Installed Main Line Size	Service Flow Rates GPM	Regen Flow Rates GPM	Bypass Included or Install Needed	Install Size*** H x W x D	Brine Tank Size*** H x W x D
CS-TT1054-7000 Pro Series - Spectrum Soft	1.5	120 grains	3/4" to 1 1/2"	up to 25	2.5	included	62"x13"x20"	62"x13"x20"

* Applicable to most municipally-treated water. Water being treated with Chlorine or Chloramine (combination of chlorine and ammonia) will exhaust all filters and softener resin prematurely. Specify the correct EWS or CWL Whole Home Water Filtration System prior to any softener system. Useful life based on proper specification, application, installation, usage and local water conditions.

** Calculate Hardness: If you get a number in PPM (parts per million) or Mg/L (milligrams per liter) simply divide the number by 17.1 to calculate the grains (gpg or grains per gallon) of hardness.

NOTE: Water hardness is comprised of the naturally found calcium and magnesium minerals and not considered a contaminant. Hardness up to a certain amount is only an aesthetic. Most appliances, heaters and fixtures have compensated and suggest the proper routine maintenance for the possible buildup. Soaps no longer need lather and all use concentrated forms where less is required. Water spots should be considered like dust in the air, you can not totally eliminate and a simple wipe off should be routine.

*** Installation size may vary. The use of flexible stainless piping is highly recommended. This may prevent pressure issues, eliminates the cost of unions on installed bypasses, lowers labor costs and require less clearance. See Service Guide for additional information.

ALL FILTRATION PRODUCT PROUDLY MADE & ASSEMBLED IN THE USA




All Product Tearsheets Available Online @ ewswater.com



HEATER GUARD Inline Filter

Prolong the life of your water heater and prevent expensive repairs.

- World-class EWS quality and performance.
- Keeps your water heater clean and easy to maintain.
- 5 micron polyphosphate filter is safe and effective: colorless, tasteless, odorless, and 100% FDA-approved food-grade materials.
- Reduces sediment and inhibits scale formation on heating element surfaces.
- Comes completely assembled for quick and easy installation.
- Made in the USA, meets or exceeds all compliances.

The EWS HEATER GUARD is the best economical and direct approach to preventing sediment and scale issues associated with certain water conditions and water heaters. Plus, it will NOT void or limit any warranty issued by any water heater manufacturer.¹

NO MORE CLOGGING OR SCALE BUILD-UP IN YOUR HEATER.

The **HEATER GUARD** installs easily at the inlet or supply of any water heater and works to keep dirt, rust, silt, sediment out of your water heater.

PROTECTION FOR YOUR HEATER AND YOUR WALLET.

The **HEATER GUARD** is designed to allow your water heater to function properly at its peak performance. This saves energy, prevents wear and tear, and prevents unplanned maintenance, which all equate to saving you money on utilities and repair bills.

PERFECT FOR ALL HEATERS.

Whether you have a tankless water heater, traditional water heater, or more than one heater, use the **HEATER GUARD** to protect them from costly repairs, unplanned maintenance, and replacement.

SAY GOODBYE TO COSTLY REPAIRS AND REPLACEMENTS.

The **HEATER GUARD** was designed with one purpose in mind: to reduce or eliminate the frequency of heater repairs and replacements. Sediment, scale, and corrosion spell the end of a heater's life – prevent the problem, and you prevent having to pay hefty repair bills or paying for a new heater.



FILTER ALL THE WATER IN YOUR HOME WITH ONE SYSTEM. Every sink, shower, and bath in your home could provide you with chlorine-free & pollutant-free water. No hassle, no maintenance, no salts or chemicals, and trusted by hospitals, health care centers, military, and private homes worldwide. For more information on EWS Central Water Filtration, visit us online at www.ewswater.com or call EWS customer service at 702.256.8182 (Mon.-Fri. 8.30 am - 4.30 pm Pacific Time).



TECHNICAL INFORMATION

HEATER GUARD PRE-SEDIMENT AND SCALE PROTECTION FOR WATER HEATERS

MODEL #s: EWS-HEATER-GUARD-3/4 and EWS-HEATER-GUARD-1.5

All Product Tearsheets Available Online @ ewswater.com



SYSTEM SPECIFICATIONS

OPERATION TEMPERATURE: Maximum 100° F (38° C) / Minimum 40° F (4° C)

OPERATION PRESSURE: Standard working pressure maximum 75 psi / minimum 30 psi

INLET/OUTLET FOR HEATER GUARD 3/4: 3/4" INLET/OUTLET FOR HEATER GUARD 1.5: 1 1/2"

DIMENSIONS OF HEATER GUARD 3/4: 25 3/4" x 5 1/4" DIMENSIONS OF HEATER GUARD 1.5: 29" x 7 1/2"

Do not use with water that is microbiologically unsafe or of unknown quality without adequate disinfection before or after the system. Replace your filter annually or as needed (do not exceed 1 year). Install in cold water applications only [installs inline prior to the water heater(s)]. Install in compliance with local and state regulations.

All installation instructions, service manuals, technical and product information is available online at www.EWSWATER.com

MODEL

REPLACEMENT FILTER ITEM

EWS-HEATER-GUARD-3/4

BB-GUARD-FILTER-3/4

EWS-HEATER-GUARD-1.5

BB-GUARD-FILTER-1.5

SERVICE LIFE ON FILTERS:
UP TO 1 YEAR.* REPLACE YOUR
FILTERS ANNUALLY OR AS NEEDED.
DO NOT EXCEED 1 YEAR.

FILTER SPECIFICATIONS

ITEM #: BB-GUARD-FILTER-3/4

DESCRIPTION: 20" Pre-Sediment (5 Micron) for the Heater Guard 3/4"

PURPOSE: Filters out rust, silt, and sediment and inhibits scale formation in water heaters.

FEATURES & BENEFITS: Enhances performance of water heaters, prevents costly repairs.

CONSTRUCTION: 100% FDA-approved food-grade polyphosphate.

SERVICE LIFE: 1 year *Filter service life is based on local water conditions and usage and should be replaced as needed, not to exceed one year. ‡*

MAX. FLOW: 9.5 GPM / 36 LPM

MAX. PRESSURE: 75 PSIG / 5.17 Bar

TEMPERATURE RANGE: 40-100° F / 4-38° C



COMPONENT
This filter element tested
and certified under ANSI/
NSF Standard 42 for
materials only.

Fully Compliant
with California
No-Lead Standards.

ITEM #: BB-GUARD-FILTER-1.5

DESCRIPTION: 20" Pre-Sediment (5 Micron) for the Heater Guard 1.5"

PURPOSE: Filters out rust, silt, and sediment and inhibits scale formation in water heaters.

FEATURES & BENEFITS: Enhances performance of water heaters, prevents costly repairs.

CONSTRUCTION: 100% FDA-approved food-grade polyphosphate.

SERVICE LIFE: 1 year *Filter service life is based on local water conditions and usage and should be replaced as needed, not to exceed one year. ‡*

MAX. FLOW: 20 GPM / 75.7 LPM

MAX. PRESSURE: 75 PSIG / 5.17 Bar

TEMPERATURE RANGE: 40-100° F / 4-38° C

HEATER GUARD 3/4" SHIPPING DETAILS

SHIPPING CARTON SIZE: 8" W x 8" D x 28" H

SHIPPING CARTON WEIGHT: 7 lbs.

HEATER GUARD 1.5" SHIPPING DETAILS

SHIPPING CARTON SIZE: 9" W x 9" D x 31" H

SHIPPING CARTON WEIGHT: 14 lbs.

3 BEST WAYS TO PROTECT YOUR HEATER

1. **EWS Series.** Inhibits scale formation and protects the entire home and family from the health side-effects and corrosiveness of chlorine, chloramine, VOCs, THMs, and much more.
2. **Heater Guard.** Protects water heaters at the inlet. Combined with an EWS system, it is the perfect application for healthy, hassle-free water to the whole home.
3. **Softener.** Will inhibit scale formation, however, the water becomes aggressive and may have long-term corrosive effects on your water heater.

¹ Under no circumstances does the EWS Heater Guard change or alter the proper application and/or routine maintenance required or recommended by the manufacturer of any product.

‡The filter gauge is based on a pressure differential. It can only be observed while water is flowing through the Heater Guard and will only move when filter cartridge has been prematurely clogged or restricted. The gauge is only a precaution to prevent problems.

Pictured at Right:
The **HEATER GUARD 1.5.**

Ideal for 1 1/2" plumbing line sizes. Select this model if the home's inlet to the heater has a 1 1/2" or greater line size, or requires greater flow rate.



CALL EWS CUSTOMER SERVICE: 702.256.8182 (MONDAY-FRIDAY 8.30 AM-4.30 PM PACIFIC TIME)

FAX: 702.256.3744 EMAIL: CUSTOMERSERVICE@EWSWATER.COM

WWW.EWSWATER.COM

All granular activated carbon media for all EWS and CWL Whole Home Filtration Systems

Versatility of Process

Filters allow the bonding of single or multiple types of extremely small sized particles onto a single support structure. For example, fine powdered lead sorbents bonded onto larger carbon support structures. This unique feature enables EWS to produce complex composite filtration media that can meet the requirements of complicated water contamination problems.

Increased Surface Area

The ability to bond extremely fine powdered media onto larger support particles results in increased surface area and improved kinetic efficiency. Instead of having one large particle available for filtration purposes, EWS technology makes possible the bonding of thousands of fine particles onto the surface of the larger support particles which greatly increases the surface area of the composite media.

Enhanced Kinetics

The process of increasing the surface area of a media enhances the adsorption kinetics and catalytic effects of that media. Consequently, in all EWS sink filtration product, EWS technology allows us to use less media and still achieve similar or superior filtration results. As a result, with this technology, we are now able to design smaller, more aesthetically appealing filtration devices with excellent performance characteristics. In all EWS whole home water filtration systems, this EWS technology allows us to create greater filtration capacities and with more longevity.

Improved Performance

EWS carbon media for cartridges, blocks or loose media has improved catalytic and adsorption characteristics because of the increase in surface area and kinetic activity. Test results have proven that EWS composite adsorption products exceed the performance characteristics of simple, one component, granular based products.

Standard 42 Aesthetic Effects

Parameter	US EPA MCL	Influent Challenge	Effluent Average	Effluent Maximum	Percent Reduction Average	Percent Reduction Minimum
Chlorine	-	2.0 mg/L	0.03 mg/L	0.06 mg/L	98.5	97

Note regarding NSF compliant testing: The challenge level of chlorine is much higher than found in treated tap water



Top Claims - The Myth and The Reality

Claim: Multi-media tanks or tanks with multiple types of filtration media filter for chlorine, chloramine*, bacterial removal, pH balancing, water polishing and other claims.

Reality:

First, effective bacterial removal is only achieved through ultraviolet, ozone or chemical disinfectant. Bacteriostatic filters using silver nitrate or other metal resins only protect poor filtration media from internal bacteria growth and not the consumer against bacteria in the water.

Second, when more than one media is incorporated into one tank, there is not enough of any one media to effectively remove the contaminants as claimed. Each media has a specific amount of material needed per tank size and flow rate according to their Material Safety Data Sheets (MSDS) in order to actually be effective. For example, while marketing all the buzzwords to the consumer where 3 or up to 5 different media is used, the tank would have to be up to 20 feet tall to accommodate all the media properly installed. Result, the system does nothing but fool the consumer for taste over a brief period. **EWS uses the highest grade of specialty blended proprietary carbon media available.**

Claim: We are green and water conservative because our systems do not need to backwash.

Reality:

Remember the Material Safety Data Sheets mentioned above for each filtration media? Oddly enough they all have requirements for backwashing filtration media to effectively filter, maintain proper filtration surface area and to prevent any packing, channeling and bacteria growth. Not backwashing media results in poor results and costly and premature replacement. Any claims are bold faced lies dressed up nicely as marketing - the only loser is the consumer. **EWS effectively backwashes to maintain effective filtration and longevity. Backwash water usage is adjustable using our advanced valving and the water (which is not a brine) is usable for landscaping, pools and other needs.**

Claim: Sure our units also remove chloramine*.

Reality:

Making this claim is dangerous. Chloramine requires a different and very specific carbon media and the proper amount for proper contact time. Most filters may remove the chloramine for a short time (taste only) until they become incapable of removing the entire compound. multi-media filters, refrigerator filters, pitcher, carafe and faucet filters simply reduce the chlorine and allow the ammonia portion of the chloramine compound to shear off and render the filter useless as a foul or bad taste becomes evident and are limited by their filtration capacities. Therefore, similar to bottled water, taste becomes the actual consumer standard and not the health of the water or actual contaminants removed. **EWS has developed an advanced media and systems to effectively remove chloramine (which also work great on chlorine and VOCs)**

*Chloramine is a compound comprised of chlorine and ammonia. For the removal of this compound to be effective, carbon must be able to have catalytic and kinetic capabilities of drawing the chlorine and attached ammonia onto the surface area of the carbon and drawing it into the interior surface area of the carbon granule. Greater surface area and contact time is necessary for adequate removal over the life of the filter cartridge.

Claim: Small tanks or cartridges in larger housings are whole home filtration.

Reality:

At bare minimum, a typical home requires 10 gallons per minute (gpm) of available water to supply enough flow to the home. Small tanks that appear to be less money have flow rates of less than 10 gpm will need more than one unit to be effective for a homes' use. The other issue as stated above, there is not enough filtration media or contact time to effectively do anything but fool the consumer that taste equates to health. **EWS wants you to be informed not sold. EWS wants to provide you a healthy water environment and not one that may simply taste good.**

ALL FILTRATION PRODUCT PROUDLY MADE & ASSEMBLED IN THE USA



All EWS advanced carbon filtration media meets or complies with NSF Standard 42 for reduction of Chlorine and other Volatile Organic Compounds. The media utilizes a high performance advanced kinetic and catalytic granular activated carbon which provides exceptional filtration capacity and effectively reduces by an average of 98.5% chlorine, voc's, bad taste and odor in drinking water.

About Municipally-Treated Water

Municipal water is heavily regulated, monitored, tested, filtered and treated. Most taste, quality and health issues are directly related to the treatment or disinfection of the water and their by-products, as well as man-made pollutants common to most water (see reference #'s below generally between 3 to 5). Issues with heavy metals and primary contaminants (see reference #'s below generally between 0 to 2) are highly regulated and effectively treated by water utilities. These contaminants are rarely an issue with water quality.

How to Use the (GAC) Carbon Filtration Reference Chart

Below is a simple reference chart to give some perspective as to GAC's capabilities with various substances. Some items are heavy metals and inorganics, while others are VOC's (volatile organic compounds), some of which are man-made pollutants. Still other items, such as hardness, are not even considered contaminants. In general, GAC is very economical and a great complement to municipally-treated water without the disadvantages of more aggressive filtration. GAC is used in all filtration due to its removal capacities. Know your water to select the correct product for you, your family and your home.

Acetaldehyde	4	Emulsions	2	Lead	3	Precipitated Sulfur	2
Acetic Acid	3	Ethyl Acetate	5	Lime	0	Propioic Acid	4
Acetone	4	Ethyl Acrylate	5	Mercaptans	4	Propionaldehyde	3
Alcohols	4	Ethyl Alcohol	4	Metal Salts	1	Propyl Acetate	4
Alkalinity	1	Ethyl Amine	4	Methyl Acetate	4	Propyl Alcohol	4
Amines	3	Ethyl Chloride	4	Methyl Alcohol	4	Propyl Chloride	4
Ammonia	3	Ethyl Ether	4	Methyl Bromide	5	Radon	4
Amyl Acetate	5	Fertilizers	1	Methyl Chloride	4	Rubber Hose Taste	5
Amyl Alcohol	5	Fluorides	2	Methyl Ethyl Ketone	5	Seawater	1
Antifreeze	4	Formaldehyde	2	Naphtha	5	Sediment	2
Arsenic	1	Gasoline	5	Nitrates	0	Soap	3
Benzene	5	Glycols	5	Nitric Acid	3	Sodium Hypochlorite	5
Bleach	5	Hardness	0	Nitrobenzene	5	Soluble Iron	2
Boron	1	Heavy Metals	3	Nitrotoluene	5	Solvents	4
Butly Alcohol	5	Herbicides	5	Odors (General)	5	Sulfuric Acid	1
Butly Acetate	5	Hydrogen Bromide	2	Oil - Dissolved	5	Sulphonated Oils	4
Calcium Hypochlorite	5	Hydrogen Chloride	1	Oil - Suspended	2	Suspended Matter	2
Carbon Dioxide	0	Hydrogen Fluoride	1	Organic Acids	4	Tannins	4
Chloral	5	Hydrogen Iodide	2	Organic Esters	5	Tar Emulsion	4
Chloramine	4	Hydrogen Peroxide	5	Organic Salts	4	Tartaric Acid	4
Chloroform	5	Hydrogen Selenide	3	Oxalic Acid	5	Taste (DI Water)	4
Chlorine	5	Hydrogen Sulfide	3	Oxygen	5	Taste (From Organics)	4
Clorobenzene	5	Hydrochlorous Acid	5	Ozone	4	THM's	5
Chlorophenol	5	Inorganic Acids	1	PCB's	5	Toluene	5
Chlorophyll	4	Inorganic Chemicals	1	Pesticides	5	Toluidine	5
Citric Acid	4	Insecticides	5	Phenol	5	Trichlorethylene	5
Cresol	5	Iodine	5	Phosphates	0	Turpentine	5
Defoliant	5	Isopropyl Acetate	5	Plastic Taste	5	Urine	2
Detergents	3	Isopropyl Alcohol	5	Plating Wastes	3	Vinegar	3
Diesel Fuel	5	Ketones	5	Potassium Permanganate	4	Xanthophyll	4
Dyes	5	Lactic Acid	4	Precipitated Iron	2	Xylene	5

KEY TO THE ABOVE LIST FOR CARBON FILTRATION:

5 - EXCELLENT: Proven Application **4 - VERY GOOD:** Proven Application **3 - GOOD:** Very Acceptable Result
2 - FAIR: limited application **1 - POOR:** not a recommended application (See RO) **0 - Not applicable** (See RO)

- Carbon Block technology has additional filtration capabilities and is the last stage in all EWS Essential Drinking Water Systems. See additional information on EWS Essential Drinking Water Systems (model #'s DWS or RO3).
- UV Disinfection for greater safeguards (DWS-UV, optional with Reverse Osmosis). See additional information.
- To prevent the absorption and inhalation of chlorine, chloramine, VOCs, by-products and pollutants. See CWL or EWS Whole Home Systems for GAC filtration to the entire home for bathing, showering and all uses.

ALL FILTRATION PRODUCT PROUDLY MADE & ASSEMBLED IN THE USA



ALL FILTRATION PRODUCT PROUDLY MADE & ASSEMBLED IN THE USA



EWS, INC.

ENVIRONMENTAL WATER SYSTEMS

WELL WATER



- **PROPER TESTING AND EVALUATION**

PRODUCT AVAILABLE:

- **REMOVAL OF IRON, MANGANESE &/OR HYDROGEN SULFIDE**
- **PH BALANCING**
- **POINT OF ENTRY PRE-SEDIMENT FILTRATION**
- **5-STAGE BOOSTER PUMP REVERSE OSMOSIS**

ALL OTHER EWS PRODUCT AVAILABLE FOR WELL WATER APPLICATIONS BASED ON PROPER SPECIFICATION

ewswater.com

O: 702.256.8182 (M-F 8:30am-4:30pm PST)

F: 702.256.3744

E: customerservice@ewswater.com

Complete Product Booklets and Service Guides for each system is available online and through customer service.

Information includes all schematics, technical information, removal capabilities, how to setup, install & startup each system as well as any troubleshooting and any other information we could think of in order to help you.

Highest Quality Product & Award Winning Customer Service Since 1987

Reverse Osmosis 5-Stage

Proper specification for RO System with well water with high TDS needing RO filtration

Model No.	Installed POU Supply Line Size	Service Flow Rate	Replacement Filter Set
RU500T35 w/BP RU500T35 w/BP w/UV	up to 1/2" up to 1/2"	up to 1 gpm up to 1 gpm	SET.RU500T35 SET.RU500T35-UV-2.PIN



RU500T35w/BP

Iron Removal Systems

Filtration to the entire home for iron, managanese and/or hydrogen sulfide

Iron Series System Model No.	Installed Main Line Size	Service Flow Rate	Replacement Media Kit
EWS-1054-P EWS-1354-11/2-P EWS-1665-P	3/4" - 1 1/4" 1 1/2" 2"	up to 12 gpm up to 35 gpm up to 65 gpm	M/PYRO1054 M/PYRO1354 M/PYRO1665



EWS-1054-P

pH Increasing

A natural way to increase low (acidic) pH levels to a more neutral range

pH Increasing Model No.	Installed Main Line Size all 3/4" - 1"	Service Flow Rate	Replacement Media Kit
EWS-1054-PH-100 EWS-1054-PH-55 EWS-1054-PH-64	(raises pH from 5.8) (raises pH from 5.0) (raises pH from 4.9 or lower)	up to 12 gpm up to 12 gpm up to 12 gpm	M/PH-1054-100 M/PH-1054-55 M/PH-1054-64
pH Increasing Model No.	Installed Main Line Size all 1 1/2"	Service Flow Rates	Replacement Media Kit
EWS-1354-PH-100 EWS-1354-PH-55 EWS-1354-PH-64	(raises pH from 5.8) (raises pH from 5.0) (raises pH from 4.9 or lower)	up to 35 gpm up to 35 gpm up to 35 gpm	M/PH-1354-100 M/PH-1354-55 M/PH-1354-64



EWS-1054-PH

pH Decreasing

Ion-exchange (softener) to decrease high (alkaline) pH levels above 8.8 to a more neutral range

pH Decreasing Model No.	Installed Main Line Size	Service Flow Rate	Replacement Resin Kit
TT-1054-PH-DN TT-1354-PH-DN	3/4" - 1 1/4" 1 1/2"	up to 12 gpm up to 35 gpm	PHRESIN-1054 PHRESIN-1354



TT-1054-PH-DN

Point of Entry Pre-Sediment 5 Micron Cartridge Filtration

Pre-Sediment Only, Limited Usage - Not a Drinking/Filtration System

Model No.	Installed Main Line Size	Service Flow Rate	Replacement Filter
BB 1" SETUP BB 1 1/2" SETUP	3/4" - 1" 1 1/4" - 1 1/2"	up to 10 gpm up to 20 gpm	BB-081 BB-081



BB 1" SETUP

Point of Entry Pre-Sediment 3 Micron Media Filtration

Pre-Sediment Only, Self-Cleaning. Long-Lasting Media - Not a Drinking/Filtration System

Model No.	Installed Main Line Size	Service Flow Rate	Replacement Media Kit
CS-PRESED-1354-7000	3/4" - 1 1/2"	up to 35 gpm	M/PRESED1354



CS-PRESED-1354-7000

Complete information and specifications are available on every product in the EWS Product Catalog and is available upon request through EWS Representation, EWS Customer Service or online @ www.ewswater.com.

ALL FILTRATION PRODUCT PROUDLY MADE & ASSEMBLED IN THE USA



Well Water Specifications: The Need for Proper Testing and Adequate Information

EWS Well Water Statement:

EWS, Inc. is focused on the manufacture of quality water treatment equipment and is not a water testing laboratory. Since other organizations, including water dealers, test for the sale, EWS, Inc. considers the testing of water and the specification of equipment a conflict of interest.

(Editor's note: Municipal water is treated and tested by water districts. Water quality results are readily available to the public. Door-to-door salespeople testing water are only running a program to sell product and are incapable of providing any valid or meaningful testing information to the consumer)

Lab Testing of Well Water Prior To Any Proper Specifications:

EWS, Inc. requires test results that are independent, complete (*the basic complete test along with a referral is a pdf file located within www.ewswater.com or available upon request by e-mail or fax*), and done in accordance with EPA compliances and chain of custody. EWS, Inc. has no affiliation with any lab, and only refers consumers to a lab that tests in accordance with standards that will allow for proper specification of treatment methods or options.

EWS, Inc. allows and encourages a consumer that may elect to use a lab of their own choosing based on their research, locale and/or pricing. However, the standard must be met for independence, completeness of the testing (*which may include additional items known to be potentially in the area*), and compliances of testing and custody.

Water Testing Information Requirements:

EWS, Inc. will not specify, nor make any recommendation for any treatment equipment or options, under the following testing circumstances; no test results available, incomplete testing performed, on-site salesperson door-to-door testing, the use of assumptions based on physical observations without any complete testing.

Well Equipment and Well Water Requirements for Proper Specifications:

EWS, Inc. requires that the consumer supply information on the well, well water, well equipment and pumping circumstances that will allow for proper specification of treatment methods or options. Circumstances may require, but are not limited to, the following; pumping equipment, adequate pressure and flow rates, volume or production of water from the well, disinfection, chemical feed, oxidation, water storage, physical debris, silt, silica, sediment, and/or particulate material.

Well Equipment and Well Water Information Requirements:

EWS, Inc. will not specify, nor make any recommendation for any treatment equipment or options, under the following well, well water, well equipment and/or pumping circumstances; no well depth disclosed or accurate information available, inadequate information on well equipment in use, inadequate information on pumping flow rates and pressure, inadequate information on well water volume or production, need for upgraded and/or other equipment or treatment to provide proper water and/or mechanical results to satisfy treatment equipment parameters.

Equipment recommendations are based on lab results and other information provided. All information should be available to EWS, Inc. prior to the recommendation of any equipment to verify that the concentrations and other factors are within the limitations of the equipment. There are items over which EWS, Inc. has no control, or of which EWS, Inc. has no knowledge, which may cause unsatisfactory performance of the recommended equipment. It is the responsibility of the consumer to verify the application information required above. EWS, Inc. assumes no liability for equipment installed based on inadequate information, improper installation and/or changes in water quality. EWS, Inc. will make every reasonable effort to provide information, in order to, assist in solving any problems that may occur.

No equipment is intended for use where water is microbiologically unsafe or with water of unknown quality without adequate disinfection before any equipment. Filter maintenance schedules will vary and must be replaced, as necessary, as determined by usage and local water conditions.

Go to ewswater.com and find the tab for Well Water.

For the most complete information on well water - Review, download or print out the "Guide For The Private Well Owner" and the link for Independent Well Water Testing Companies.

ALL FILTRATION PRODUCT PROUDLY MADE & ASSEMBLED IN THE USA



CONDITIONS

Source Water - Test Results

Pre-Treatment:

Coliform/Bacterial/E-Coli microorganism problems,
decaying vegetation, organic
bonding, Iron/manganese bacteria
Tannins (yellow)

Pre-treatment is the primary need to disinfect, break down organic bonds and/or add oxygen to water. To remove iron, manganese, pre-filter, balance pH and/or generally prepare the water for consumption additional filtration is used to minimize water issues for use in the home.

Oxidation/aeration (*as needed*)
location or sequence of tank may vary
Low supply water flow and/or pressure

Iron Removal (*as needed*):

Iron (red or pinkish)
Manganese (black or brownish)
Hydrogen sulfide (rotten egg smell)

Pre-Sediment Filtration (*as needed*):

Silt, dirt, heavy particulate matter
location or sequence of unit may vary

pH Balancing (*as needed*):

Low pH, less than 6.6, corrosive, acidic water
High pH, more than 8.6, corrosive, basic water
location or sequence of unit may vary

Point of Entry Filtration (*as needed*):

Chlorine, VOC's, herbicides, pesticides,
solvents, dyes, fuels, odor, taste, clarity

Softeners strictly soften water and have their application. However, softeners replace valuable calcium and magnesium minerals (non-contaminants) with sodium or potassium chloride. The resultant water may be of lesser water quality, has warranty issues with other products and may be legally restricted due to the damaging brine discharge. The EWS Series of appliances is applicable up to 30 grains of hardness and is an alternative. Or EWS at the main and a softener on the hot side if the preference of the consumer or water condition.

Point of Use Filtration (*as needed*):

Dependent upon test results, removal
and/or safeguard, as applicable

APPLICATIONS

Based on Test Results

Chlorination/Chemical Feed (*as needed*)

Ozonation
UV (only safeguard, not a solution)

Storage tank and Equipment

Booster Pump (Need min. 40psi)

High Purity - High Oxidation
Media Systems

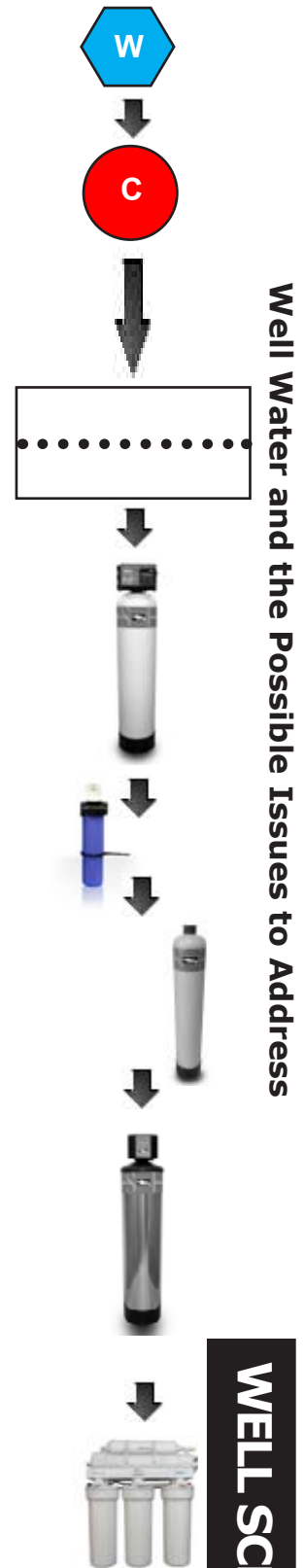
5-micron Pre-Sediment Filter
(not a whole home filter)

Custom Blended
pH Increasing Reagent System
pH Decreasing Ion-Exchange

CWL Series - Filtration only
EWS Series -
Filtration and Conditioning vs. Softening

Various Drinking Water Systems
or Reverse Osmosis Units

Both types of systems have their advantages,
capabilities, and in the case of reverse osmosis,
some disadvantages. EWS, Inc. can provide
either system with UV disinfection options.



All systems should be correctly applied based on water issues, concerns and/or consumer preference.

ALL FILTRATION PRODUCT PROUDLY MADE & ASSEMBLED IN THE USA



Make sure labs are independent, compliant, and certified testing facilities offering complete well water testing and analysis. Labs should have complete tests for well water, including microbiological, inorganics, organics and water balance. Kits are normally shipped to the consumer with sterile bottles and simple instructions. Once the testing is performed the kit is shipped back overnight (may be included in the cost, inquire with lab) to preserve the samples, create a chain of custody and properly test the water.

Make sure to see the following list of what to completely test for in order for proper specification of product. Any incomplete test will not be reviewed for specification. Additional items may have to be tested based on the local water conditions and environment

Go to ewswater.com and find the tab for Well Water.

For the most complete information on well water - Review, download or print out the "Guide For The Private Well Owner" and the link for Independent Well Water Testing Companies.

Mandatory Microbiological Drinking Water Standards Required Test and Required Absent or "Safe" Result Prior to Any Water Filtration and/or Treatment Product

Coliform Bacteria "Safe Water Test"

Coliform bacteria or "Potability" testing measures possible harmful bacteria in your water. E. Coli is the test for contamination due to waste product. This test is recommended for all wells at least on an annual basis by the Environmental Protection Agency. Test results should always read absent, negative or N/D. A lab should provide you with a sterile sampling bottle & preservative, as well as detailed sampling instructions.

Mandatory Primary Drinking Water Standards

Nitrate (NO₃) + Nitrite (NO₂) (Annual Test)

An important addition to the your water test kit, in accordance with the Safe Drinking Water Act. These compounds cause electrolyte imbalances and are essential for homes with an infant under six months of age. The EPA has established a primary drinking water standard of 10 mg/L (1.0 ppm or mg/l for nitrate) for these parameters in water.

Conductivity (EC) (Annual Test)

A low or negative number would be water aggressive or corrosive in nature (softened water will have this issue due to the exchange of naturally found minerals for salts) Water with a higher number exceeding 0.78 umhos/cm will have higher concentrations of TDS, hardness, and/or other factors. This is a simple and inexpensive test that should be performed annually as a benchmark as to whether or not you have changes in your water.

Lead (Pb)

It is important to whether any Lead results from the actual water source or from the piping or delivery system into the home. Lead is a toxic metal that was used in older water pipes in some homes. As water stands in the pipes, the lead will slowly dissolve into the water. The water sampled for a lead test must be a "first draw" or the water first out of the pipe, which should be at least six hours prior to the last run of the faucet. The established primary drinking water standard is 0.01 ppm or mg/l.

Fluoride (F)

Fluoride is added to water by some municipalities to encourage healthy teeth in children and young adults. The EPA has established a primary drinking water standard of 4.0 mg/L for fluoride. A contaminant in higher concentrations or to people with chemical sensitivities, this test will allow you do discover the amounts of fluoride your water contains.

Mercury (Hg)

A toxic liquid metal that can easily be stored in human tissue if absorbed. The maximum contaminant level designated by the EPA is 0.002 mg/L. A certified lab can determine if your water is safe and under the harmful limit.

Arsenic (As)

Arsenic is more common than one may imagine. It is a natural element found below the Earth's surface. If your well has a crack in it, there is a possibility of it becoming contaminated. The effects of arsenic are similar to those of mercury. The EPA limit for arsenic in drinking water is 0.01 ppm or mg/l (10 ug/l, micro-grams/liter or parts per billion). A very small amount.

ALL FILTRATION PRODUCT PROUDLY MADE & ASSEMBLED IN THE USA



Mandatory Secondary Drinking Water Standards

Sodium (Na)

Sodium can be a major concern for people with circulatory ailments and critical for low sodium diets. Even though there is no official standard, sodium is considered present at 50 ppm or mg/l and above 150 ppm may be actionable.

Chloride (Cl)

Chloride can have an effect on the taste of your water. Standards placed at 250 ppm or mg/l are actionable.

Sulfate (SO₄)

Sulfates can have an effect on the taste of your water. Standards placed at 250 ppm or mg/l are actionable.

Iron (Fe)

The EPA has established a secondary drinking water standard of 0.30 mg/L for Iron. The secondary drinking water standards were designed for aesthetic purposes (i.e. taste, odor, color, etc.)

Manganese (Mn)

The EPA has established a secondary drinking water standard of 0.05 mg/L for Manganese. Just like Iron, it may cause rusty water, stains, deposits, and affect water's taste, but it is not a health hazard.

Iron/Sulfur Bacteria

Although this bacteria does not present a health threat, this type of bacteria can make water smell and taste bad. By linking to the iron or manganese it plugs plumbing equipment and diminishes the effectiveness of treatment systems. Test results should always read absent, negative or N/D. If not, pre-treatment before any equipment is required

Tannins

There are many factors that may cause color in water. The most common are organic matter, and/or colloidal solids that are too small and too fine to settle out properly. These suspended particles can cause problems with disinfection and filtration processes, and also be an indicator of bacterial activity in the water. Frequently seen in shallow wells, wells under the influence of surface run-off water, or area that have heavy rainy periods.

Aesthetic Drinking Water Standards

pH

Acceptable pH range is between 6.6 and 8.6, best results should be between 7.2 – 7.6. Too low water pH (below 6.5) is acidic and corrosive (staining of blue/green may be present), too high pH (above 8.8) is basic and chalky (staining also be present or may make water hardness issues, if applicable appear to be greater).

Alkalinity

This is a good test for when the household plumbing contains lead, objectionable taste or smell are indicators. Below 40 mg/l the water can be more aggressive. Above 240 mg/l water is more basic and is more chalky which makes water hardness appear more of an issue than it may actually be.

Total Hardness

Measured in mg/l the number can seem high, however if you divide this number of mg/l by 17.1 (ie: 200mg/l divide by 17.1 = 11.7 grains) you will get the common reference number of grains of hardness (or grains per gallon - gpg). Water hardness can be very frustrating. When problems arise with hard water, any surface the water comes into contact with can be affected. A perfect example of this build-up is on drains and faucets. Total Hardness test is a good measure of how much naturally found calcium & magnesium (not contaminants) are in your water. Hardness concentrations greater than 35 grains/gallon are considered high and softening the water should be considered. Result can determine exactly where you want to be and how to address this mostly aesthetic issue.

Total Dissolved Solids (TDS)

Water containing more than 1500 mg/l total dissolved solids is not recommended for human consumption. Some mineral water such as Panna or Pellegrino can have TDS exceeding 900 ppm. Averages usually can be found around between 250 and 650 while 1,000 ppm may be actionable depending on other results found.

Go to ewswater.com and find the tab for Well Water.

For the most complete information on well water - Review, download or print out the "Guide For The Private Well Owner" and the link for Independent Well Water Testing Companies.

ALL FILTRATION PRODUCT PROUDLY MADE & ASSEMBLED IN THE USA



ALL FILTRATION PRODUCT PROUDLY MADE & ASSEMBLED IN THE USA



EWS, INC.

ENVIRONMENTAL WATER SYSTEMS

COMMERCIAL APPLICATIONS



- **PROPER SPECIFICATION QUESTIONNAIRE**

PRODUCT AVAILABLE:

- **WHOLE FACILITY FILTRATION SYSTEMS**
- **COMMERCIAL SOFTENERS**
- **COMMERCIAL REVERSE OSMOSIS SYSTEMS**

ALL OTHER EWS PRODUCT AVAILABLE FOR COMMERCIAL APPLICATIONS BASED ON PROPER SPECIFICATION

ewswater.com

O: 702.256.8182 (M-F 8:30am-4:30pm PST)

F: 702.256.3744

E: customerservice@ewswater.com

Complete Product Booklets and Service Guides for each system is available online and through customer service.

Information includes all schematics, technical information, removal capabilities, how to setup, install & startup each system as well as any troubleshooting and any other information we could think of in order to help you.

Highest Quality Product & Award Winning Customer Service Since 1987

EWS Commercial Point of Entry

EWS Filtration and EWS Conditioning



EWS-1665

Model No.	Installed Main Line Size	Service Flow Rate
EWS-1665	2"	up to 100 gpm

Larger systems or multiple system configurations are available based on need and proper specification. Units can be installed in parallel for greater flow rates on larger service lines. Larger valve and tank units are available based on application. Call for additional information, quotation, and availability.

CWL Commercial Point of Entry

CWL Filtration where water hardness is not an issue



CWL-1665

Model No.	Installed Main Line Size	Service Flow Rate
CWL-1665	2"	up to 100 gpm

Larger systems or multiple system configurations are available based on need and proper specification. Units can be installed in parallel for greater flow rates on larger service lines. Larger valve and tank units are available based on application. Call for additional information, quotation, and availability.

Commercial Softening

Ion-exchange (salt) softening based on need and specification



Various

Model No.	Installed Main Line Size	Service Flow Rate
Various	up to 6"	up to 500 gpm

Requiring softening of water, single tank or alternating tanks are specified based on the need, water conditions, usage, flow rates, line size, hours of operation and other factors. 1 1/2", 2", 3" valves available based on application. Larger systems or multiple system configurations are available based on need and proper specification. Call for additional information, quotation, and availability.

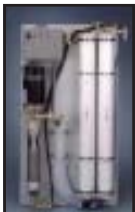
Commercial


Compact RO

Commercial Reverse Osmosis - Compact

Compact Commercial for 150 gallons per day up to 800

Model No.	Installed POU or Main Supply Line Size	Gallons Per day
COM150	up to 1"	up to 150 GPD



Wall Mount RO

Commercial Reverse Osmosis - Wall Mount

Wall Mount Commercial for 450 gallons per day up to 5,400

Model No.	Installed POU or Main Supply Line Size	Gallons Per day
WM450	up to 1"	up to 450 GPD



Vertical Frame Mount RO

Commercial Reverse Osmosis - Vertical

Vertical Frame Mount Commercial for 1,800 gallons per day up to 10,800

Model No.	Installed POU or Main Supply Line Size	Gallons Per day
FMV-1	up to 1"	up to 1,800 GPD

All Commercial Reverse Osmosis Systems: Larger systems or multiple system configurations are available based on need and proper specification. Units can be installed in parallel for greater flow rates on larger service lines. Call for additional information, quotation, and availability.

ALL FILTRATION PRODUCT PROUDLY MADE & ASSEMBLED IN THE USA


Make sure to review the Commercial Applications Questionnaire and the list of questions that may need to be answered to specify a commercial application properly. A simple cross-reference from another spec may not answer the questions - What are we trying to achieve? and What is the best solution to meet those needs?

Source Water:	Required information	<u>What is the quality of water we are dealing with?</u>	
<input type="checkbox"/> Municipally-treated, city or tap water Please attach any information on the water provided by the city or utility and continue questionnaire below	or	<input type="checkbox"/> Well water or water of unknown quality STOP See well water information Have the water completely tested and provide complete test results	
If Municipal Water: Treatment Methods			
Chlorine:	Yes___ No___	if yes, how much free ppm___	
Chloramine:	Yes___ No___	if yes, how much free ppm___	
Water Balance and Summary Conditions			
Water hardness:	Yes___ No___	if yes, how hard in mg/l___ or grains___	
Total Dissolved Solids (TDS)	___ ppm or mg/l	pH___ (0 to 14)	Alkalinity___ (0 to 500)
Disposal: sewer ___ septic___			

Problems:	Required information	<i>Check all that apply:</i>	
Odor ___ Clarity___	Taste ___	Spotting and Maintenance ___	Scale Build-Up ___
Color ___ Red___	Black/Brown___	Yellow___	Blue/Green Staining ___
Sticky Residue___	Particulate/sand/silt___	Sediment___	
Other , please describe_____			

Product Water:	Required information	<u>What are you trying to achieve?</u>	
Solve the following:	<i>Check all that apply:</i>		
FILTRATION: <input type="checkbox"/> Not Sure			
<input type="checkbox"/> Drinking/Cooking/Quality:	<input type="checkbox"/> Point of Use (sinks)	<input type="checkbox"/> Point of Entry for the entire facility or building	
CONDITIONING/SOFTENING:: <input type="checkbox"/> Not Sure			
<input type="checkbox"/> Conditioning: Alternative to softening, assists with water hardness issues with no salt or brine discharge			
<input type="checkbox"/> Softening:	All Locations Yes___ No___;		
<i>If yes, check yes or no on the following:</i> Drinking/Ice Bypassed Yes___ No___; Hot Side Only Yes___ No___			
OTHER: Correction of an Additional and/or Specific Problem Identified, please describe_____			

Usage:	Required information		
Based on your source water and what you're trying to achieve the next questions and the answers will allow us to specify the correct and most cost effective, operationally efficient system(s)			
Specific Usage for Point of Use or Sink:	<i>Check or fill in all that apply:</i>		
Drinking Water Systems (DWS):	Yes___ No___	Quantity___ Not Sure___	Separate Dispensers Yes___ No**___
Tee-Off or Cross-Connect Filtered water to Other Applications (ie: ice-maker) Yes___ No___			
Reverse Osmosis Systems (ROS):***	Yes___	Quantity___	No___ Not Sure___
Tee-Off or Cross-Connect Filtered water to Other Applications (ie: ice-maker) Yes___ No___			

For All Systems - Point of Use (sink) and Point of Entry: *Check or fill in all that apply:*

Feed Water Information: Required information

How old is the building or facility that needs treatment: years _____ months _____
 Is the building or facility being repaired or undergoing a remodel Yes ___ No ___
 Describe location of feed water (water to be treated) _____
 Is there an existing pressurized feed water line to the system? Yes ___ No ___
 Building main water line size _____ inches Is the water pressure low Yes ___ No ___
 Building or facility water line pressure available _____ psi Street water line pressure _____ psi
 If pressure is at or above 75 psi,
 Is there a Pressure Regulating Valve (PRV) on the main water line Yes ___ No ___
 Pressure pump Yes ___ No ___
 if yes, what is pressure minimum _____ psi maximum _____ psi
 Roof top gravity system or rooftop water towers Yes ___ No ___
 if yes, what is line size _____ inches flow rate gpm _____ water pressure _____ psi
 Are there any issues with the water delivery system or piping, please describe _____

Needed Flow Rate: Required information

How many plumbing fixtures: Sinks _____, Toilets _____, Kitchen _____, Laundry _____, Showers/Tubs _____
 Peak Flow rate _____ gpm Continuous Flow rate _____ gpm
 Avg. Monthly Water Usage _____ gallons

Hours of Operation: Required information

Important to specify correct systems to determine the need for 1 or multiple tanks, correct valving, alternating brine (softeners) or backwash (filtration) and proper sizing. Note: This is where a "cookie-cutter, off the shelf" application gets very inefficient and costly to operate.
 Hours of Operation: _____ per Day _____, Days/Week _____, Weeks/Year _____
 Explain anticipated use and down time: _____
 Do you anticipate that demand could increase in the next five years? Yes ___ No ___
 If yes, by how much _____

Power: Required information

Utility power available? Yes ___ No ___ If no, size of generator in kW _____;
 Voltage _____; Frequency _____; Phase _____; Normal run hrs/day _____

Building Information: Required information

Is this a mixed use property Yes ___ No ___ Building usage residential _____ office _____ other _____
 If yes, other than residential units what other type of usage require water; *check all that apply*
 commercial offices _____ restaurant _____ coffee shop/cafe _____ grocery store _____ laundry _____ gym _____ retail _____
 Other, please describe _____
 How many total stories or floors (include basement(s) and ground floor) _____
 If applicable:
 How many residential units per floor _____ How many total residential units _____
 How many plumbing fixtures on average per residential unit _____
count or estimate every toilet, sink, tub, shower, clothes washer, dishwasher per unit

Make sure to review the Commercial Applications Questionnaire and the list of questions that may need to be answered to specify a commercial application properly. A simple cross-reference from another spec may not answer the questions - What are we trying to achieve? and What is the best solution to meet those needs?

Mechanical Area for Installation:

Required information

Is there space or plans that could house these system(s)? The following considerations must be addressed:

Mechanical room within building Yes___ No___

Roof top space planned for installation Yes___ No___
If yes, does it have a roof Yes___ No___
If yes, would equipment be exposed to the elements Yes___ No___

Size of space available for installation height _____ width _____ length _____

Door opening, if applicable height _____ width _____

Type of structure and foundation: please describe _____

Does it have ventilation: Yes___ No___

Is there a drain available: Yes___ No___

Is there electric available: Yes___ No___

Is room or area heated Yes___ No___

Are there any restrictions with; plumbing Yes___ No___
noise Yes___ No___
aesthetic Yes___ No___

Other, please describe _____

General:

Operation and maintenance personnel available: Yes___ No___

Time available for operation and maintenance: _____

Attach blue print with dimensional information or sketch if available: _____

**Are You On Well Water?**

If you are on private or community well water, you need information to determine any water issues and their solutions. Well water requires complete and independent testing. Call EWS Customer Service at 702.256.8182 or visit EWSWATER.COM for more information.



All Filtration and Reverse Osmosis Systems: Applicable to this application Yes___ No___

Volume Required for all RO systems of Permeate (product water)** _____ gallons per day

Do You Require a Specific Quality of Water, Result and/or Requirement that must be achieved, Yes___ No___
If yes, attach complete required water results necessary for your application: _____

Reverse Osmosis Specific:** Applicable to this application Yes___ No___

How much storage do you have at present _____ gallons

Do you plan to increase storage capacity? Yes___ No___
If yes, when _____
If yes, by how much _____

Distance from lowest water level to R.O. System
Vertical _____ feet/inches; Horizontal _____ feet/inches

Distance from R.O. System to product water storage tank
Vertical _____ feet/inches; Horizontal _____ feet/inches

Softener Specific: Applicable to this application Yes___ No___

Softened water installation main line____ hot water only____ not sure____

Heated water from tank type commercial____ boiler system____ other, please describe

Line size to heater/boiler _____ inches

Flow rate of heater/boiler _____ gpm

** Plumb Back to Cold Side of Existing Faucet for DWS Only

*** ROS Reverse Osmosis Systems have restrictions in how much water they can produce per day and proper specification requires how much water is needed at that point of use per day, the hours of operation that water is expected to be used or is needed and the additional space needed for storage tank.

Call or fax us a request for additional helpful information, such as, spreadsheets on how to calculate usage based on fixture count, and more helpful information to assist in the specification of softeners and other systems.

ALL FILTRATION PRODUCT PROUDLY MADE & ASSEMBLED IN THE USA



Summary of Performance Guidelines, Factory Preparation, Product Performance, and Compliances

Product performance may vary based on local water conditions, proper product specification and application, proper plumbing application, setup, installation, startup, maintenance and/or usage. To ensure proper operation, follow all setup, installation, start-up and maintenance procedures as detailed in all service guides. In addition, follow all applicable local plumbing codes.

The feed water must comply with the following conditions for all systems capabilities, compliances, and warranties to remain valid. All commercial POU and POE systems: Performance guidelines and feed water compliance dependent on specification and application, please consult with EWS, Inc. upon specification.

Water Temperature Range:	minimum 40°F, maximum 80°F		
Water Pressure:	Point of Use (POU):	minimum 40 psi, maximum 75 psi;	
	Point of Entry (POE):	minimum 40 psi, maximum 75 psi	
Water Flow Rates:			
Point of Use (POU):	water supplied to residential sink product:	at a minimum of 1 gpm	
Point of Entry (POE):	water supplied to tanks up to 1054:	at a minimum of 8 gpm	
	water supplied to 1354 tanks:	at a minimum of 12 gpm	

All product must be connected to main or cold water supplies. Product not intended to be connected to hot water supplies or allow heated water to flow through systems. Contact EWS, Inc. for product available for this purpose.

All product contain water. Do not allow any product to freeze.

Do not use where water is microbiologically unsafe or with water of unknown quality without adequate disinfection before or after the unit(s).

Reverse Osmosis Systems Only: Never allow reject water to be hindered or stopped, without the reject water flow or improper drain connection, impurities may build up on membrane.

Point of Entry (POE) Units: Do not prevent backwash or brine lines to be stopped or restricted. Create and allow air gap to prevent any cross contamination.

Compliances:

Please be advised that all the materials and components utilized in producing all POU (Point of Use) drinking water filtration and reverse osmosis systems, and all POE (Point of Entry) filtration, conditioning and softening equipment, by EWS, Inc., comply with, but are not limited to, any one or more of the appropriate regulating standards. Furthermore, and without exception, every component included in all POU and POE systems by EWS, Inc. are compliant for food and beverage contact and/or meet or comply with the most current, appropriate, and applicable standards without exception.

Factory Preparation:

All systems are factory prepared and thoroughly checked to assure proper function and if applicable, quality tests of product water produced to assure that minimum standards of rejection have been met, and/or tests of specific components to assure correct function and flow rate measurements to assure efficiency specifications are met.

Product Performance:

- ◆ For all product capabilities, compliances and/or warranties to remain valid, all systems are dependent upon proper application, specification, and installation of any specific unit and/or combination of units.
- ◆ Please know your local or individual water condition(s), and plumbing application(s). Please review system(s) capabilities, applications, setup, installation, startup, maintenance, and related warranties.
- ◆ Detailed information is published in EWS Product Manuals and specific Product Service Guides (included with each specific unit) and made available upon request throughout US distribution and/or EWS corporate offices. All current information is available online @ www.ewswater.com



FDA*, EPA and NSF** Compliances

Please be advised that all the materials and components utilized in producing all POU (Point of Use) drinking water filtration and reverse osmosis systems, and all POE (Point of Entry) filtration, conditioning and softening equipment, by EWS, Inc., comply with, but are not limited to, one or more of the following regulating standards:

NSF STANDARD 14	FDA 21 CFR 177.1520	FDA 21CFR 177.1640	FDA 21 CFR 177.1350
FDA 21 CFR 175.105	CAS # 7440-44-0	ANSI 304	CDA C360000
NSF STANDARD 60	NSF STANDARD 61	NSF STANDARD 58	ANSI 302
ANSI 316	FDA 21 CFR 177.2600	FDA 21 CFR 175.300	FDA 21 CFR 177.2550
NSF STANDARD 52	NSF STANDARD 42	NSF STANDARD 18	FDA 21 CFR 177.2550
FDA 21 CFR 177.1655	FDA 21 CFR 177.1630	FDA 21 CFR 177.2800	FDA 21 CFR 175.300
FDA 21 CFR 177.2260	FDA 21 CFR 181.32	FDA 21 CFR 177.2660	FDA 21 CFR 177.1950
FDA 21 CFR 177.2910	FDA 21 CFR 177.2250	FDA 21 CFR 177.1680	NSF STANDARD 53
NSF STANDARD 55	CAAB1953		

- *The standards listed above relate to the Code of Federal Regulations of the United States of America, Title 21, Charter 1, Subchapter B set forth by the U.S. Food and Drug Administration.
- **The NSF (National Sanitation Foundation) standards correlate to materials and potable water. The National Sanitation Foundation is not a government agency.

Furthermore, and without, exception every component included in all POU and POE systems by EWS, Inc. are compliant for food and beverage contact and/or meet or comply with the most current, appropriate, and applicable standards without exception.

All EWS product has been independently tested to NSF standards by an accredited third-party laboratory for all claims made regarding NSF/ANSI standards.

Please take note of this helpful and enlightening information on this confusing subject:

Contrary to common belief and less than truthful marketing, drinking water treatments units are NOT required to be "NSF Certified" (as tested by NSF itself), but they must be independently tested to applicable NSF standards by an accredited, independent laboratory. Though the test standards bear the NSF/ANSI name, NSF is just one of many accredited institutions.

- All EWS Product is No-Lead Compliant to California AB1953 and the No-Lead Standards which will take effect throughout the USA as of 2014.

Factory Preparation:

All systems are factory prepared and thoroughly checked to assure proper function and if applicable, quality tests of product water produced to assure that minimum standards of rejection have been met, and/or tests of specific components to assure correct function and flow rate measurements to assure efficiency specifications are met.

Product Performance:

- ◆ For all product capabilities, compliances and/or warranties to remain valid, all systems are dependent upon proper application, specification, and installation of any specific unit and/or combination of units.
- ◆ Please know your local or individual water condition(s), and plumbing application(s). Please review system(s) capabilities, applications, setup, installation, startup, maintenance, and related warranties.
- ◆ Detailed information is published in EWS Product Manuals and specific Product Service Guides (included with each specific unit) and made available upon request throughout US distribution and/or EWS corporate offices. All current information is available online @ www.ewswater.com

ALL FILTRATION PRODUCT PROUDLY MADE & ASSEMBLED IN THE USA



Warranty Notification

Notification:

This warranty is referenced by EWS, Inc. in all literature, addressed in General Terms and Standard Conditions of Sale, and is published in its entirety in all EWS, Inc. product manuals, websites, and in all service guides supplied with all product.

Limited Warranty:

EWS, Inc., a Nevada corporation, hereby warrants all products to the original consumer purchaser to be free from defects in material and workmanship as stated in the following paragraphs:

- All residential point of use: countertop filtration, in-line filtration, undercounter drinking water filtration, shower filtration, residential reverse osmosis, and canister and filter cartridge point of entry pre-sediment and/or filtration units or systems for one year from date of purchase.
- All residential point of entry: pH decreasing and softener (resin and ion-exchange) systems, Environmental (EWS) Water Systems, Iron Removal units, CWL whole-home (filtration media) systems, pH increasing reagent (sacrificial media) units for 10 years on the tank and riser, 10 years on the ICN conditioner(s) (if applicable) and 5 years on the valve head from date of purchase.
- All commercial systems: Dependent on specification and application, please consult with EWS, Inc. upon specification.
- All filtration medias, resins, cartridges, uv lamps, and/or membranes are not covered by any warranty. Filter media, resin, cartridge, uv lamp, and/or membrane replacement or maintenance schedule will vary and must be replaced, as necessary, as determined by usage and local water conditions.

Product performance may vary based on local water conditions, proper product specification and application, proper plumbing application, setup, installation, startup, maintenance and/or usage. To ensure proper operation, follow all setup, installation, start-up and maintenance procedures as detailed in all service guides.

Not intended for use where water is microbiologically unsafe or with water of unknown quality without adequate disinfection before or after unit(s). The contaminants or other substances removed or reduced by these and any other water filtration or treatment devices are not necessarily in your water. To confirm the presence of any primary and secondary contaminants, have your water supply completely analyzed by an independent and approved facility or if applicable, contact your local water utility for information. Aesthetic, non-health related, or constituents without set federal standards may be part of water testing but are insufficient to determine proper application of any water filtration or treatment device.

EWS, Inc. will replace, free of charge, during the warranty period, any part which proves defective in material and/or workmanship under proper product and plumbing specification and application, normal and proper installation, use, service and proper care as published in detail in all service guides included with product. Labor charges are excluded from any warranty service or repair and are not the responsibility of EWS, Inc. Shipping charges may apply to delivered replacement parts or materials. Charges may also apply for the cost of any replacement media, resin, cartridges, uv lamp and/or membrane from any warranty service or repair. Information can be obtained at any time through a local dealer, distributor, representative or direct from EWS, Inc. and/or on-line at: www.ewswater.com. Replacement parts can be obtained from your local dealer, distributor, online or contractor.

This warranty is the exclusive warranty granted by EWS, Inc. and is in lieu of all other warranties of merchantability and fitness for a particular purpose and is further limited to defective parts replacement only. Labor charges and/or damage incurred in setup, installation, and startup, or repair, or replacement, as well as, incidental and consequential damages connected there with, are excluded, and are not the responsibility of, and will not be paid by EWS, Inc.

This warranty is void for any damages due to improper product and/or plumbing specification and/or application, misuse, abuse, neglect, accident, acts of nature, action of any military or civil authorities, improper handling and transportation, or improper setup, installation, and/or startup, or any violation of instructions furnished by EWS, Inc., or any replacement parts other than genuine parts or replacements supplied by EWS, Inc.

This warranty is not a warranty of merchantability, fitness, taste, aesthetics, and/or performance that may be subject to improper product and/or plumbing specification and/or application, misuse, abuse, neglect, accident, acts of nature, action of any military or civil authorities, improper handling and transportation, or improper setup, installation, and/or startup, or any violation of instructions furnished by EWS, Inc.

This warranty is not a warranty of merchantability, fitness, taste, aesthetics, and/or performance that may be personal and of subjective opinion and that does not relate to the performance of any system.



Warranty Information and the Purchaser's Responsibility

Keep a record of the purchase receipt and/or installation receipt. Purchaser is required fill out warranty registration form(s) on applicable product(s) and register all product by either online @ www.ewswater.com, telephone, postal delivery, fax, e-mail (either register@ewswater.com or information provided to customerservice@ewswater.com). **Failure to do so voids the warranty unless restricted by state regulations.**

EWS, Inc. does not sell, show or make available any information on any consumer in our database. This database is to ensure, if needed, proper warranty service, and good customer service for years to come. Please see our privacy policy published in our website at www.ewswater.com.

Know Your Water:

- If on a municipal system, large or small, it is your right as a consumer to have access to the most recent test results and to expect adherence to federal guidelines, as well as any state or local requirements. Any problems should be reported to the appropriate agencies. Please acquire those municipal test results to become an informed consumer.

- If on an individual well, have your water completely and independently tested. Local code may require a simple test for coliform bacteria to approve a well, however you may be unaware of potential problems for you and/or your home. A local water salesman is looking to close a sale and is going to test for hardness minerals and a few simple and obvious issues, which may or may not be contamination problems. Their solution is almost always the same and yet may provide no resolution to any true problems. Obtain our "Guide for the Private Well Owner" on our website; www.ewswater.com. Review our section on well water testing and applications in our complete catalog with your local distributor, dealer, or our representative or visit our website.

- **WARNING:**

Some restrictions apply to the use of softeners. Contact your local municipal water district or Gov't Agency. Brine discharge is already restricted on, or may be a problem for, septic applications and waste water treatment facilities. Since some states have already restricted softeners to metered valves to prevent excessive brine discharge, EWS, Inc. only provides metered valving in its line of softeners.

Restrictions or an outright ban may also apply to hot-side only, salt-exchange tanks or services. Local water dealers and other organizations do not inform consumers of these issues and believe these rules are unenforceable. The consumer is ultimately responsible.

Softeners may also provide warranty issues with pools and spas, certain other products and finishes. Softened water should not be used for drinking, cooking, pets or plants and is usually bypassed or "looped away" from the cold side of the kitchen sink. Reverse osmosis, which also has its drawbacks and issues with other products and materials, may be used to remove the salt from the water that the softener put in at the kitchen sink, yet may be misapplied for the actual local water conditions.

Any problems of water quality, or the fitness of any EWS, Inc. product that is associated with any mechanical, construction, application, installation, and/or environmental issue(s) (ie: flow rates, line pressure, piping materials, broken supply lines, changing water conditions; well or municipal water quality, et. al.), known or unknown, of the home or facility will not be considered by EWS, Inc. until such issue(s) have been resolved.

Responsibility for the proper product and/or plumbing specification, application and/or installation of any device manufactured by EWS, Inc. lies with the consumer, their builder contractor, plumbing sub-contractor and any other installer of choice. Items do not specify and/or install themselves. EWS, Inc. has provided many sources to acquire information on the proper application of systems and their installation prior to any purchase. EWS, Inc. manufactures a complete product line of point of use water filtration systems and point of entry filtration, softening and/or conditioning systems and/or appliances.

EWS, Inc. and the distributors of EWS, Inc. will stand behind the warranties of materials and workmanship. However, EWS, Inc. and the distributors of EWS, Inc. and the Environmental Water Systems Product Line do not bear any responsibility for improper applications of product and/or improper installation. It is for this reason that EWS, Inc. provides complete information on all product for your understanding, specification, application and selection, and proper plumbing application and installation.

To obtain warranty service support, contact your local dealer or contractor from whom you obtained the product or contact EWS, Inc., Customer Service, via phone, fax, or email.

ALL FILTRATION PRODUCT PROUDLY MADE & ASSEMBLED IN THE USA



The EWS, Inc./Environmental Water System Product available through:



Authorized Kitchen & Bath Showrooms, Appliance Showrooms, Building & Plumbing Wholesale Supply Locations and their building, plumbing, HVAC and service contractors, and Authorized Online Distributors. All Distribution adheres to an EWS, Inc. MAP Policy for published pricing. EWS, Inc. does not sell directly to the retail consumer or directly to building, plumbing, HVAC and service contractors.

ALL FILTRATION PRODUCT PROUDLY MADE & ASSEMBLED IN THE USA



Contact Information:

EWS, INC.
Environmental Water Systems

ewswater.com

O: 702.256.8182 (M-F 8:30am-4:30pm PST)

E: customerservice@ewswater.com

F: 702.256.3744

Have a Question...?

Seriously....give us a call. We're here to help.

Summary Product Tearsheets and Complete Product Information Booklets are available online @ ewswater.com or by e-mail attachment by simply contacting EWS Customer Service.

Complete Service Guides provide the correct way to setup, install and startup all product and include all technical specifications are also available online @ ewswater.com or by e-mail attachment by simply contacting EWS Customer Service.



Revised 4/2012

