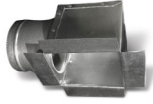


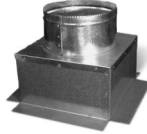
CEILING BOXES - RB60, RB61, RB62, RB65



RB60 Ceiling
Boot Side



RB61 Ceiling
Box Side



RB62 Ceiling
Box Top



Straight Input



Angle Input

RB65 Ceiling
Box Angle

Ceiling Boot Side RB60

Rectangular opening with 2" flanges on all edges. Height is typically 2" + diameter. Overall length is typically largest register opening + 4". Collar non-crimp. Smooth airflow design

Ceiling Box Side RB61

Rectangular opening with 2" flanges on all edges. Height is typically 2" + diameter. Overall length is typically largest register opening + 6". Collar non-crimp w/bead.

Ceiling Box Top RB62

Rectangular opening with 2" flanges on all edges. Box height is 6" and collar height is 6" total 12". Collar non-crimp w/bead.

Ceiling Box Angle RB65

Rectangular opening with 2" flanges on all edges. Box height is typically 4" + diameter. Collar can be installed on angled side or on straight side for easy access under eaves.

PART NUMBER DESIGNATIONS

RB60 $xxyyzz$ RB61 $xxyyzzRa$ RB62 $xxyyzzRa$ RB65 $xxyyzzRa$

Where: xx= smaller register opening, yy= larger register opening, zz= diameter
NF = No Flange R = Insulated a= 4, 6, 8 ex: R6 = 1.5" Insulation

Standard G30 Galvanized Steel. 30GA – 26GA depending on size. Most sizes 6x6 thru 24 x 24 except Ceiling Boot RB60. Standard with flanges. Riveted construction. All Ceiling Boxes (RB61, RB62, RB65) available INSULATED R4, R6, R8.

PROJECT: _____ COMPANY: _____ DATE : _____

LOCATION: _____ SUBMITTED BY: _____