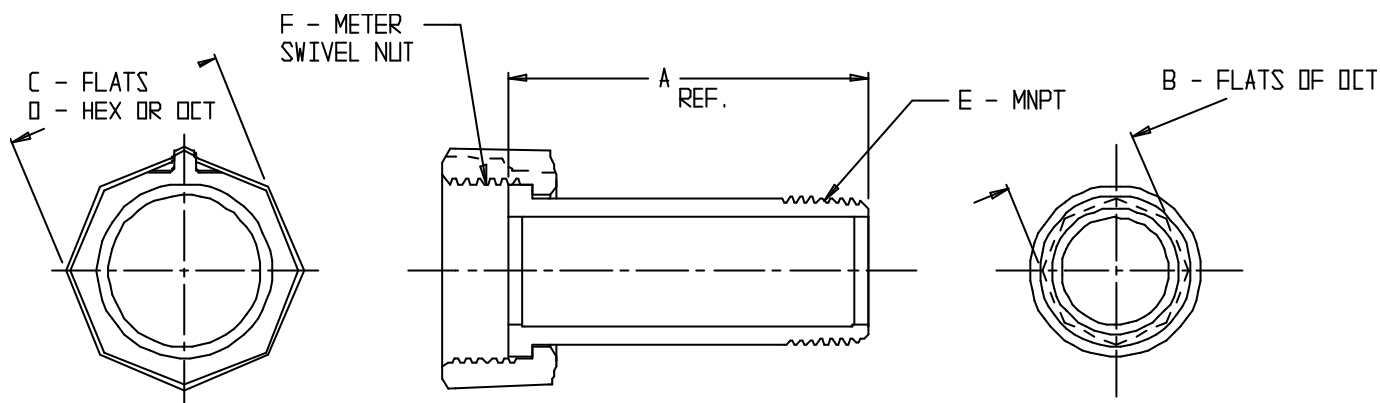
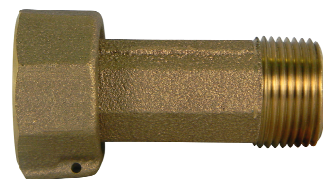


# SUBMITTAL DATA SHEET

## NL Meter Coupling – 74622

Meter Swivel Nut x MNPT



MODEL	SIZE	A	B	C	D	E	F
74622	5/8 X 1/2 X 2.38	2.38	.78	1.31	HEX	1/2	5/8
74622	3/4 X 3/4 X 2.50	2.50	.94	1.47	OCT	3/4	5/8 X 3/4, 3/4
74622	1 X 1 X 2.63	2.62	1.23	1.81	HEX	1	1

### SUBMITTAL INFORMATION

- Manufactured in compliance with ANSI/AWWA C800 (latest revision)
- Brass components in contact with potable water conform to ASTM B584, UNS C89833 (latest revision) and identified with “NL”
- Certified to NSF/ANSI 61 and NSF/ANSI 372
- Brass components not in contact with potable water conform to ASTM B62 and ASTM B584, UNS C83600 -85-5-5-5 (latest revision)
- Large wrench area provided for proper installation



**A.Y. McDonald Mfg. Co.**  
P.O. Box 508  
Dubuque, IA 52004-508

**Toll Free:** 1-800-292-2737  
**Fax:** 1-800-832-9296  
**Hours:** 7:00 a.m. – 5:00 p.m., CST

[sales@aymcdonald.com](mailto:sales@aymcdonald.com)  
[www.aymcdonald.com](http://www.aymcdonald.com)

A.Y. McDonald considers the information on this assembly drawing correct when published. Item and option availability, including specifications, are subject to change without notice.

**Submitted by:**

07-14