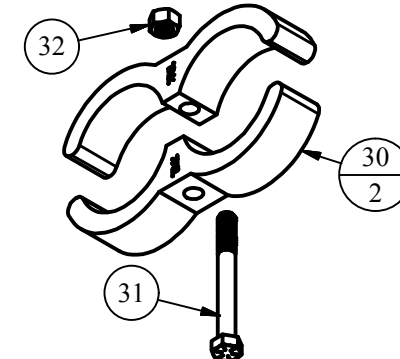


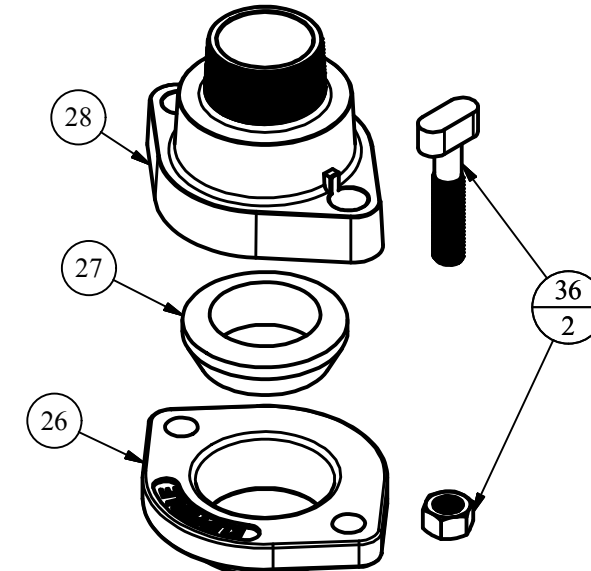
#78 CUT SHEET

(VERTICAL INLET, 2-1/2" NST OUTLET)

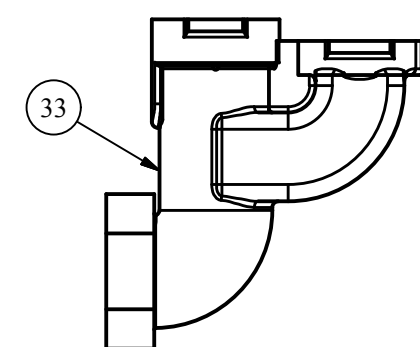
OPTIONAL CLAMP ASSEMBLY (STANDARD ON D.O.B.'S OVER 5')



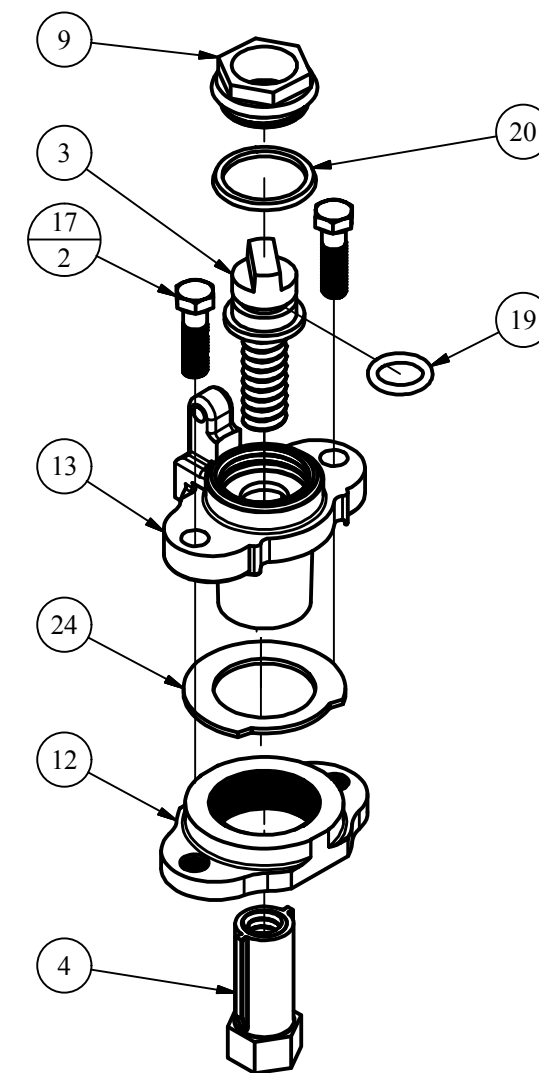
OPTIONAL MJ ADAPTER



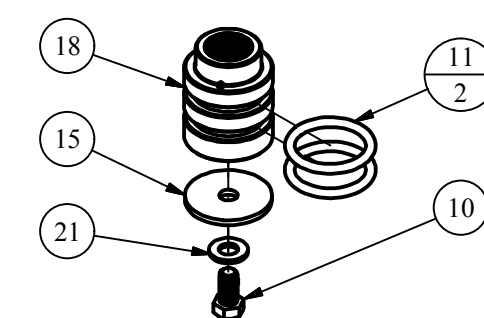
OPTIONAL SIDE INLET VALVE



TOP CAP ASSEMBLY

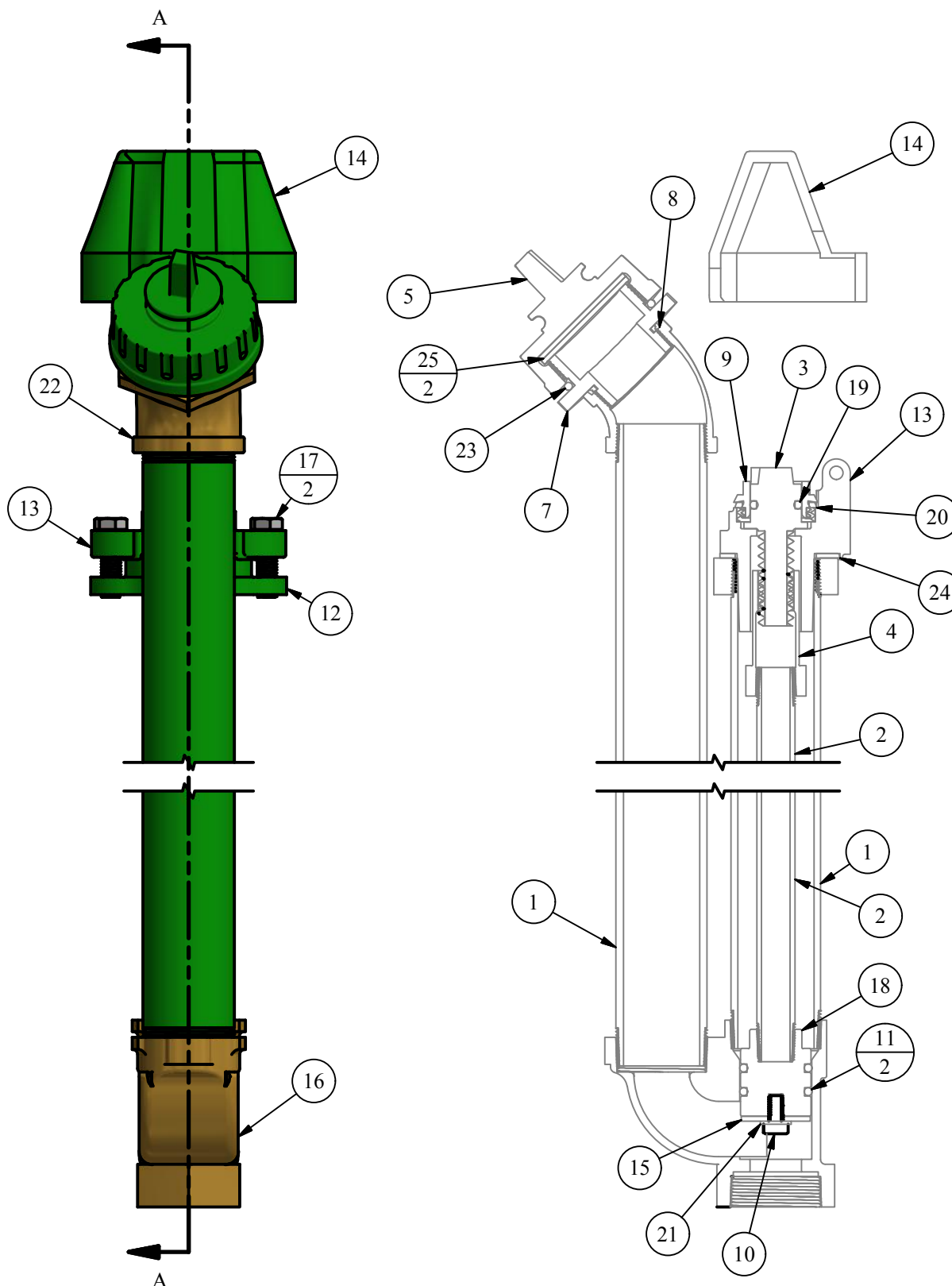


PLUNGER ASSEMBLY



PARTS LIST

ITEM	QTY	PART NUMBER	DESCRIPTION	NOTES
1	3.17	2P	2" STEEL PIPE	
2	1.09	3/4GAL	3/4" GALVANIZED PIPE	B,C
3	1	4B	SLOTTED TOP SCREW	
4	1	510	CONNECTING NUT	C
5	1	592-C	2-1/2" NST SIDE CAP	
6	1	595	PEAR RING, CHAIN, S-HOOK ASSEMBLY	A
7	1	601A	2-1/2" NST NOZZLE	
8	1	669	GASKET FOR NOZZLE	C
9	1	721	MAINGUARD PACKING NUT	
10	1	77C	SEAT RUBBER BOLT	
11	2	77D	PLUNGER O-RING	C
12	1	77F	NECK	C
13	1	77GA	TOP CAP	
14	1	77H	LOCKING COVER	C,S
15	1	77I	SEAT WASHER	C
16	1	77J	BRASS 2" STRAIGHT INLET VALVE	C
17	2	77K	TOP CAP BOLT	C
18	1	77L	PLUNGER	
19	1	77M	O-RING FOR SLOTTED SCREW	C
20	1	77MG	PACKING NUT GASKET	C
21	1	77W	WASHER FOR PLUNGER	
22	1	78A	2" NOZZLE COUPLING (45°)	C
23	1	95G	HOUSING O-RING	
24	1	A1	TOP CAP GASKET	C
25	2	A16	NOZZLE CAP GASKET	C
OPTIONS / REPAIR PARTS ONLY				
26	0	2MJG	2" MECHANICAL JOINT GLAND	
27	0	2TG	2" TRANSITION GLAND	
28	0	707	2" MJ ADAPTER	
29	0	77A	TRAFFIC BREAKAWAY COUPLING FOR VERTICAL OUTLET	A,C
30	0	77CL	IRON CLAMP	C
31	0	77P	BOLT FOR CLAMP	C
32	0	77Q	NUT FOR CLAMP	C
33	0	79V	BRASS 2" SIDE INLET VALVE	C
34	0	79W-IRON	IRON VALVE 2" MJ 90°	A
35	0	85LHW	LONG HANDLED WRENCH	A
36	0	CORTEN	MJ BOLT AND NUT	
OLD STYLE PARTS LIST				
37		4-77	"OLD STYLE" SQUARE TOP SCREW	A
38		4A	"OLD STYLE" SLOTTED TOP SCREW	A
39		620	"OLD STYLE" PACKING NUT	A
40		621	"OLD STYLE" PACKING NUT	C
41		77N	O-RING FOR TOP SCREW	A,C
42		77O	"OLD STYLE" PACKING NUT GASKET	A,C



SECTION A-A
CENTER SECTION VIEW

REPAIR KITS

PART NUMBER	DESCRIPTION	PARTS INCLUDED	NOTES
X4B	"NEW STYLE" SLOTTED TOP SCREW COMPLETE	4B SCREW (1), 77M O-RING (1)	DUE TO COMPATIBILITY, IT IS RECOMMENDED THAT X4B BE ORDERED WITH 510 - CONNECTING NUT
X592C	NOZZLE CAP COMPLETE 2-1/2" NST	592-C SIDE CAP (1), A-16 GASKET (2), 595 CHAIN ASSEMBLY (1)	
X601A	BRASS NOZZLE 2-1/2" NST	601A NOZZLE (1), 669 GASKET (1)	
X707	2" MJ ADAPTER	707 BRASS 2" MJ ADAPTER (1), 2MJG GLAND (1), 2TG 2" TRANSITION GASKET CORTEN MJ BOLT AND NUT (2)	
X721	"NEW STYLE" PACKING NUT WITH GASKET	721 PACKING NUT (1), 77MG GASKET (1)	SEE X770PASSY
X77EXT-6	MAINGUARD EXTENSION - FIRST 6"	2P EXTERIOR PIPES (2), 3/4GAL OPERATING ROD (1), 3/4C COUPLING (1), 77A COUPLING (1), 77F NECK (2), 629A-B-SS BOLT (2), 827 GASKET (1)	
X77EXT-XX	MAINGUARD EXTENSION - EACH ADDITIONAL 6"	2P EXTERIOR PIPES (2), 3/4GAL OPERATING ROD (1), 3/4C COUPLING (1), 77A COUPLING (1), 77F NECK (2), 629A-B-SS BOLT (2), 827 GASKET (1)	
X77GA	TOP CAP COMPLETE	77GA TOP CAP (1), A1 GASKET (1), 77K BOLT (2)	SEE X770PASSY
X77L	PLUNGER COMPLETE	77L PLUNGER (1), 77D O-RING (2), 77I SEAT WASHER (1), 77W WASHER (1), 77C BOLT (1)	
X770PASSY	77 OPERATING ASSEMBLY - GREEN (NOTE 4)	4B SCREW (1), 510 CONNECTING NUT (1), 721 PACKING NUT (1), 77MG GASKET (1), 77GA TOP CAP (1), A1 GASKET (1), 77K BOLT (2)	RECOMMENDED FOR ALL REPAIRS
X77RK	REPAIR KIT	77D O-RING (2), 77I SEAT WASHER (1), 77W WASHER (1)	
OLD STYLE REPAIR KITS			
X4	"OLD STYLE" PENT TOP SCREW COMPLETE	4 SCREW (1), 77N O-RING (1)	USED BEFORE APRIL 1995
X4A	"OLD STYLE" SLOTTED TOP SCREW COMPLETE	4A SCREW (1), 77M O-RING (1)	USED APRIL 1995 TO JANUARY 2012
X620	"OLD STYLE" PACKING NUT WITH GASKET	620 PACKING NUT (1), 77O GASKET (1)	USED BEFORE APRIL 1995
X621	BRASS PACKING NUT COMPLETE	621 PACKING NUT (1), 77MG GASKET (1)	USED APRIL 1995 TO JANUARY 2012
X77RK-OLD	"OLD STYLE" REPAIR KIT	77D O-RING (2), 77I-1/2 "OLD STYLE" SEAT WASHER (1), 77W WASHER (1)	USED BEFORE APRIL 1995

NOTE	DESCRIPTION
A	NOT SHOWN
B	PIPE LENGTH DEPENDENT ON DEPTH OF BURY
C	SOLD AS REPLACEMENT PART
S	SPECIFY COLOR ON ORDER

DISCLAIMER
THIS DRAWING IS THE PROPERTY OF THE KUPFERLE FOUNDRY COMPANY. IT IS NOT TO BE USED OR DUPLICATED WITHOUT THE PERMISSION OF THE OWNER.

LEGEND

- (X) → STANDARD TAG
- (X/Y) → TAG WITH Y QUANTITY

DRAWN	SMS	11/14/2016
CHECKED	DCL	9/10/2017
MODIFIED		
SIZE	C	SCALE
		1 / 4
DWG NO	#78 Cut_Rev0	
SHEET	1 OF 1	REV
		0

