

INSTALLATION GUIDE

Franke Farm House Faucet with Side Spray

Model FF6000A



Model FF7000A





TECHNICAL DATA

Standard water flow 1.75 gpm - 60 PSI

Recommended pressure range 25-100 PSI - Over 100 PSI PRV required

Hole size for faucet $\varnothing 1-1/4"$



has certified that this faucet complies with NSF61, AB1953 and ASME 112.18.1-2011/CSA B125.1-2011 requirements

INSTALLATION INSTRUCTIONS

- 1 Remove all contents from the package and check for completeness.

NOTE: Call immediately if you see inconsistencies.

(1-800-626-5771) or visit
www.frankeksd.com

Installation Tools:

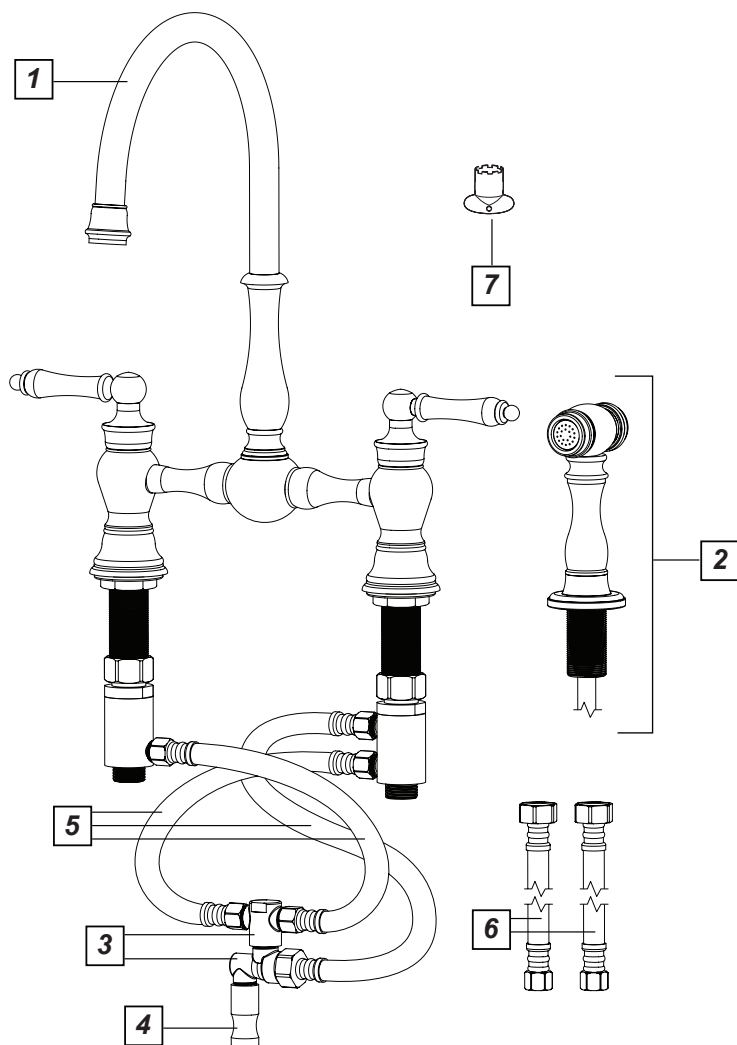


1-1/8" [29mm] - Mounting Nuts
1-1/8" [29mm] - Shank Nuts
7/8" [23mm] - Hose Connections
5/8" [16mm] - Hose Connections
1/2" [13mm] - Side Spray Hose Connections

Installation

Package Contents:

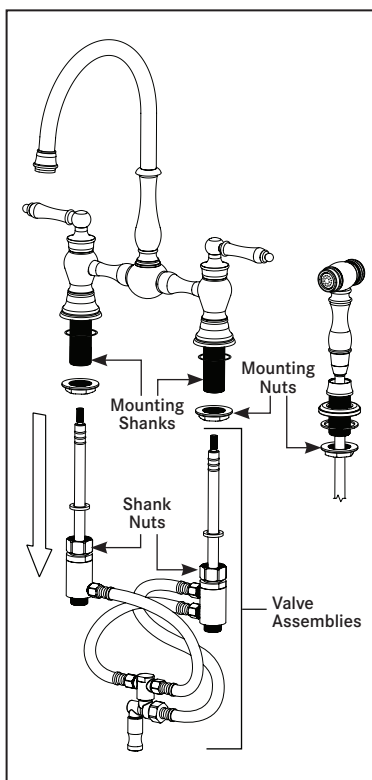
- | | |
|-------------------------------|-------------------------|
| 1 - Faucet (varies see cover) | 5 - Connecting Hoses |
| 2 - Side Spray Assembly | (1 - 3/8" x 1/2" Hose) |
| 3 - Tee Valve & Diverter | (2 - 3/8" x 3/8" Hoses) |
| (1 - Tee) | 6 - Supply Hoses |
| (1 - Diverter) | (2 - 3/8" x 1/2" Hoses) |
| 4 - Check Valve Assembly | 7 - Aerator Wrench |
| (1 - Check Valve Housing) | |
| (2 - Check Valves) | |



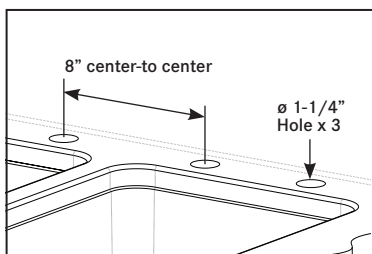
Installation

- 1 For best results, Franke recommends that this unit be installed by a licensed, professional plumber - Please read over the instructions before beginning the installation. Make sure to observe all local plumbing and building codes during installation of this unit.

- 2 Remove the Valve assemblies from Mounting Shanks by un-threading the Shank Nuts and pulling the stems out of the body. Remove Mounting Nuts from Mounting Shanks. Set the Valve Assemblies and Mounting Nuts aside.

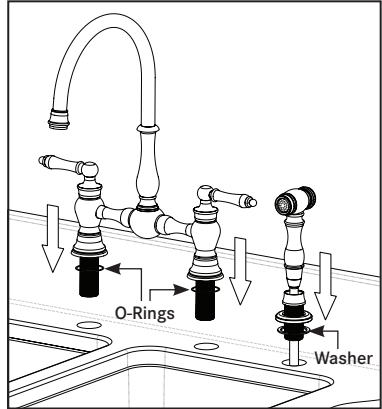


- 3 Cut mounting holes 1-1/4" diameter (8" center-to-center spread requirement for faucet) in the desired position in counter top or sink. Homeowner should choose desired spacing for the Side Spray hole.

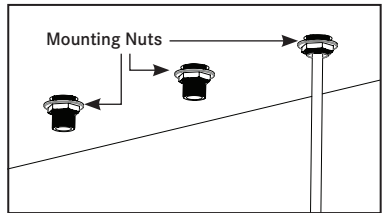


Installation

- 4 Install Faucet Body and Side Spray through the holes in counter. Make sure O-rings and Washer are in place underneath the bases.

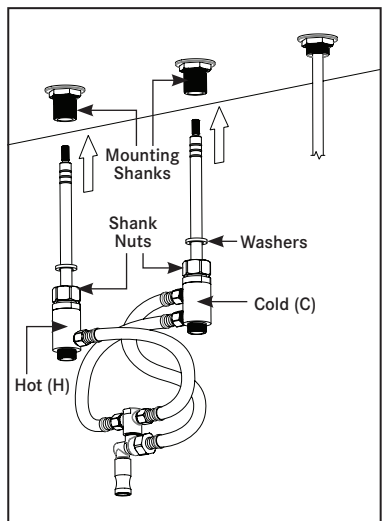


- 5 Thread Mounting Nuts onto Mounting Shanks underneath the counter. Tighten the Mounting Nuts so Faucet Body and Side Spray are secured in place.



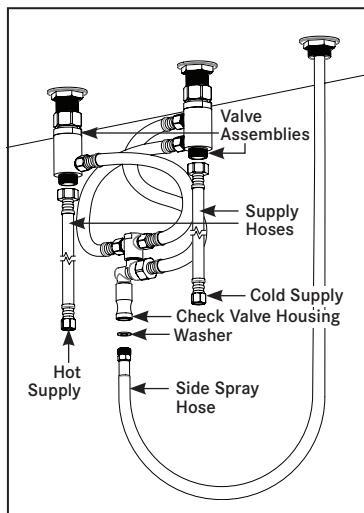
- 6 Install the Valve assemblies by inserting the stem through the Mounting Shanks and through the body and threading the Shank Nuts onto the Mounting Shanks. Make sure the Washers are still in place on the stems and the connection are tight and sealed.

Note: Valve Assemblies are marked Hot (H) and Cold (C).

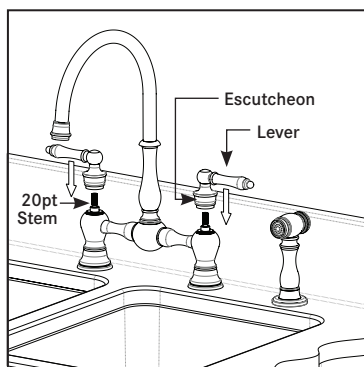


Installation

- 7 Connect Supply Hoses to the Valve Assemblies and Side Spray Hose to the Check Valve Housing. Ensure washer provided with Side Spray Hose is in place. Connect Supply Hoses to Hot and Cold water supply from the home.

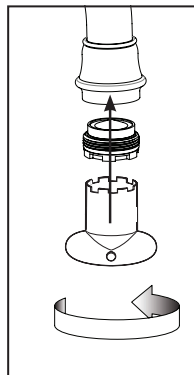
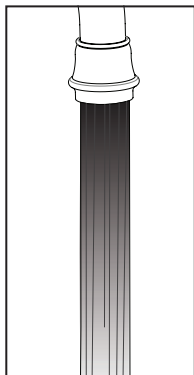
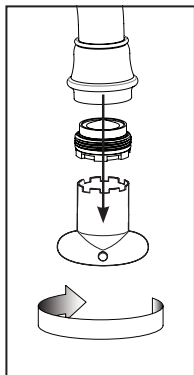


- 8 If handles are not straight after installation, the handle position can be adjusted by un-threading the Escutcheon from the Faucet Body and removing the handles. Align the lever to the desired position on the 20pt Stem and re-thread Escutcheon onto the Faucet Body.



Installation

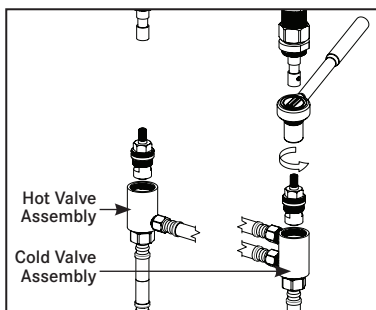
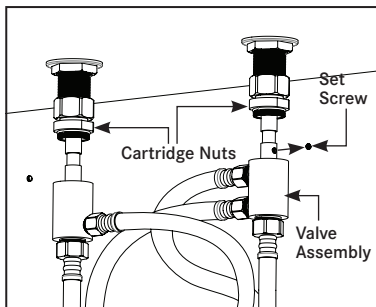
- 9 Remove the aerator, by turning it counter clock wise with the aerator wrench. Turn on the water supply, and the faucet. and check for leaks while the water is flowing through the faucet. This will flush any debris from the faucet from the installation process. Turn off the faucet and reinstall the aerator with the aerator wrench.



1 Maintenance and Trouble Shooting

Replacing Cartridges

1. Shut off the water supply to the faucet.
2. Open the faucet briefly to relieve any pressure inside the faucet.
3. Move the faucet handle to "OFF" Position.
4. Remove Valve Assemblies by un-threading the Cartridge Nuts and un-thread the Set Screws from the Stem Extension.
5. Remove cartridges from valve assemblies by using a 17mm socket wrench.
6. Install the new cartridge into valve assemblies; ensure to tighten cartridge to 14 ft./lbs. (18.9Nm).
7. Re-Assemble Valve Bodies by following step 4 in reverse. Make sure all connecting joints are secure.
8. Test for Leakage.



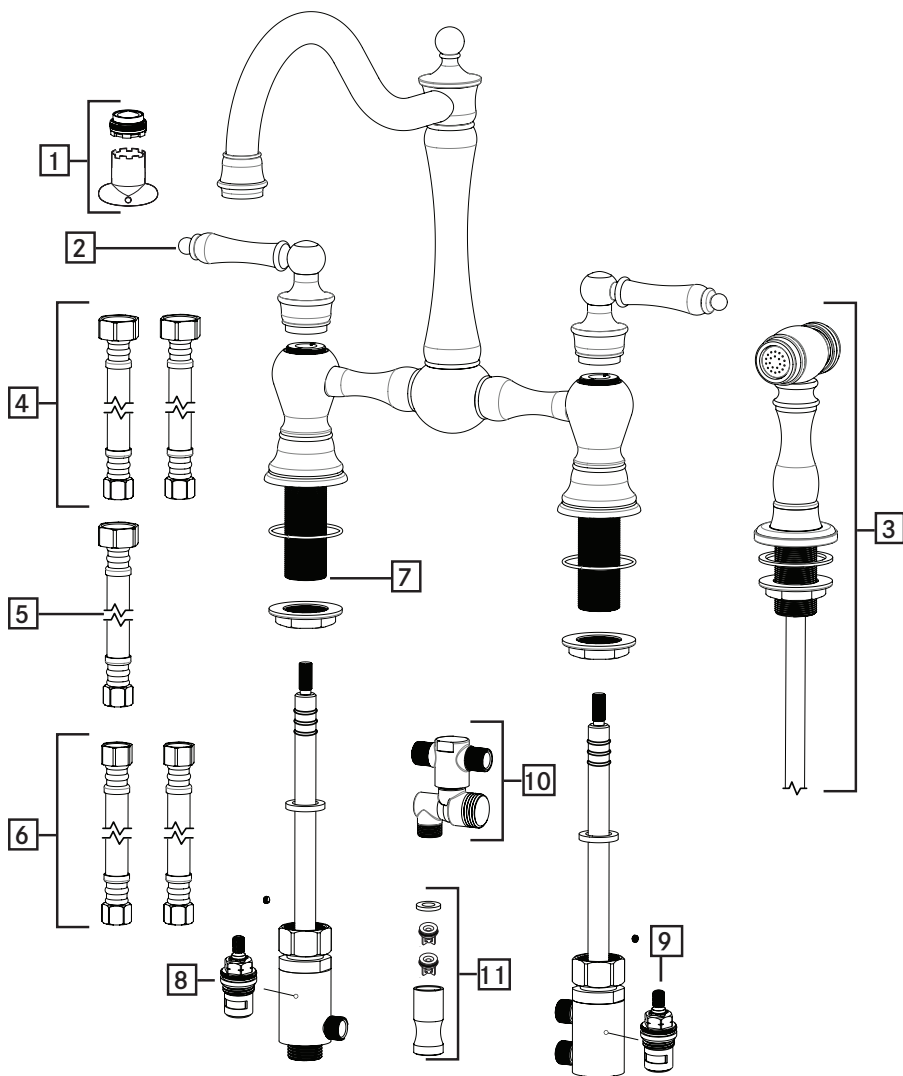
General Maintenance

Clean aerator periodically. Do not use harsh detergents, solvents, chemical agents, metallic sponges, etc. that could harm the surface and damage the finish. Clean only with a soft sponge and soapy water.

1

Replacement Parts

1 - 3-029	1.75GPM Aerator and Wrench	4 - 3-030	1/2" x 3/8" Compression Hose 24"
2 - 3-024CH	Handle Assembly (Chrome)	5 - 3-036	1/2" x 3/8" Compression Hose 12"
2 - 3-024OWB	Handle Assembly (Old-world Bronze)	6 - 3-031	3/8" x 3/8" Compression Hose
2 - 3-024PN	Handle Assembly (Polished Nickel)	7 - 92037	Locking Nut
2 - 3-024SN	Handle Assembly (Satin Nickel)	8 - 3-028	Hot 1/2" 20pt Cartridge
3 - 3-034CH	Side Spray Assembly (Chrome)	9 - 3-028C	Cold 1/2" 20pt Cartridge
3 - 3-034OWB	Side Spray Assembly (Old-world Bronze)	10 - 3-032	Diverter Valve Assembly
3 - 3-034PN	Side Spray Assembly (Polished Nickel)	11 - 3-035	Double Check Valve Assembly
3 - 3-034SN	Side Spray Assembly (Satin Nickel)		



LIMITED LIFETIME WARRANTY

Franke Consumer Products, Inc., Kitchen Systems Division extends the following warranty to the original purchaser of its faucets effective January 1, 2003.

All faucets installed in a private residence will carry a limited lifetime warranty on all mechanical parts to be free of manufacturing defects in material and workmanship under normal usage. All chrome finishes carry a limited lifetime warranty; all other finishes are warranted for five (5) years from the original date of purchase.

Marine and Outdoor Installation: Franke Consumer Products, Inc. faucets are NOT warranted for Marine and Outdoor installations.

This warranty applies only to the original owner, providing the product has been installed in accordance with the installation instructions, used as recommended and in a normal residential application. In the event of a warranty claim, the owner will be required to provide proof of purchase - save sales receipt. This warranty covers all components which make the product operational. Franke, at its option, may repair or replace the product or components necessary to restore the product to good working condition. Franke reserves the right to inspect the installation prior to the actual replacement of the product or component part.

This warranty does not cover misuse or abuse, accidental damages, scuffs or scratches, improper installation, abnormal usage, negligence or damage caused by improper maintenance or cleaning. Normal wear of parts is excluded from the warranty. Damage caused by impurities or acts beyond Franke's control are not covered. Any product or part which has been repaired or altered in any manner outside of Franke's factory, unless previously authorized in writing by Franke, will void warranty. Any replacement excludes transportation and any labor re-installation costs. This warranty does not allow recovery of incidental or consequential damages such as loss of use, delay, property damage or other consequential damage, and Franke accepts no liability for such damages.

The Franke warranty is limited to the above conditions and to the warranty period specified herein and is exclusive. Franke DISCLAIMS all other warranties, expressed or implied, including IMPLIED WARRANTIES OF MERCHANTABILITY AND/OR FITNESS FOR A PARTICULAR PURPOSE. This warranty gives you specific legal rights that may vary from state to state.

Further information

For any further information about our products, about the installation of them or about the guarantee, please contact our Customer Service Department:

Franke Consumer Products Inc.,
Kitchen Systems Division
800 Aviation Parkway
Smyrna, TN 37167
Phone: 1-800-626-5771
Fax: 1-888-685-0007
www.frankeksd.com





Franke Consumer Products Inc.,
Kitchen Systems Division
800 Aviation Parkway
Smyrna, TN 37167
Phone: 1-800-626-5771
Fax: 1-888-685-0007
www.frankeksd.com