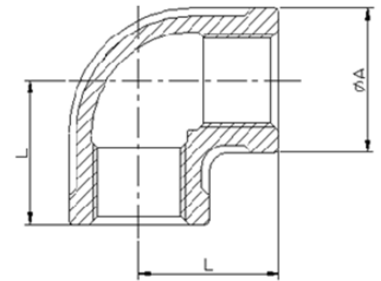


DIMENSIONAL SPECIFICATIONS

STAINLESS STEEL ISO PATTERN FITTINGS 150 LB.

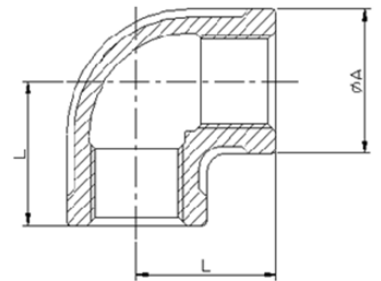
90 DEGREE ELBOW (304)

Part #	Size (IN.)	Approx. Net WT. (LB.)	A	L
K401-02	1/8	0.09	0.67	0.75
K401-04	1/4	0.13	0.84	0.83
K401-06	3/8	0.15	0.93	0.98
K401-08	1/2	0.22	1.14	1.10
K401-12	3/4	0.35	1.42	1.30
K401-16	1	0.55	1.69	1.50
K401-20	1-1/4	0.85	2.05	1.77
K401-24	1-1/2	1.10	2.30	1.97
K401-32	2	1.68	2.81	2.28
K401-40	2-1/2	2.93	3.43	2.72
K401-48	3	3.21	3.92	3.07
K401-64	4	6.28	4.96	3.78



90 DEGREE ELBOW (316)

Part #	Size (IN.)	Approx. Net WT. (LB.)	A	L
K601-02	1/8	0.09	0.67	0.75
K601-04	1/4	0.13	0.84	0.83
K601-06	3/8	0.15	0.93	0.98
K601-08	1/2	0.22	1.14	1.10
K601-12	3/4	0.35	1.42	1.30
K601-16	1	0.55	1.69	1.50
K601-20	1-1/4	0.85	2.05	1.77
K601-24	1-1/2	1.10	2.30	1.97
K601-32	2	1.68	2.81	2.28
K601-40	2-1/2	2.93	3.43	2.72
K601-48	3	3.21	3.92	3.07
K601-64	4	6.28	4.96	3.78



**MERIT
BRASS**

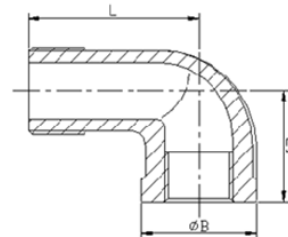
DIRECTING THE FLOW OF *Quality*

DIMENSIONAL SPECIFICATIONS

STAINLESS STEEL ISO PATTERN FITTINGS 150 LB.

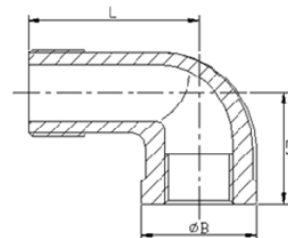
90 DEGREE STREET ELBOW (304)

Part #	Size (IN.)	Approx. Net WT. (LB.)	B	L	L1
K403-02	1/8	0.06	0.67	0.98	0.75
K403-04	1/4	0.10	0.83	1.10	0.83
K403-06	3/8	0.15	0.98	1.26	0.98
K403-08	1/2	0.22	1.14	1.46	1.10
K403-12	3/4	0.37	1.38	1.69	1.30
K403-16	1	0.51	1.69	2.05	1.50
K403-20	1-1/4	0.82	2.05	2.36	1.77
K403-24	1-1/2	1.01	2.31	2.56	1.97
K403-32	2	1.71	2.82	2.91	2.28
K403-40	2-1/2	2.72	3.39	3.46	2.72
K403-48	3	4.13	3.94	3.86	3.07
K403-64	4	6.83	4.98	4.65	3.78



90 DEGREE STREET ELBOW (316)

Part #	Size (IN.)	Approx. Net WT. (LB.)	B	L	L1
K603-02	1/8	0.12	0.67	0.98	0.75
K603-04	1/4	0.18	0.83	1.10	0.83
K603-06	3/8	0.23	0.98	1.26	0.98
K603-08	1/2	0.34	1.14	1.46	1.10
K603-12	3/4	0.49	1.38	1.69	1.30
K603-16	1	0.80	1.69	2.05	1.50
K603-20	1-1/4	1.18	2.05	2.36	1.77
K603-24	1-1/2	1.51	2.31	2.56	1.97
K603-32	2	2.35	2.82	2.91	2.28
K603-40	2-1/2	3.94	3.39	3.46	2.72
K603-48	3	4.06	3.94	3.86	3.07
K603-64	4	7.80	4.98	4.65	3.78



MERIT BRASS

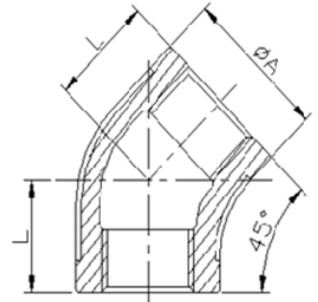
DIRECTING THE FLOW OF *Quality*

DIMENSIONAL SPECIFICATIONS

STAINLESS STEEL ISO PATTERN FITTINGS 150 LB.

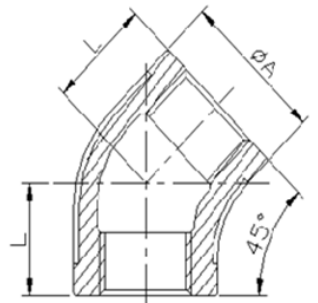
45 DEGREE ELBOW (304)

Part #	Size (IN.)	Approx. Net WT. (LB.)	A	L
K402-02	1/8	0.08	0.71	0.71
K402-04	1/4	0.10	0.83	0.67
K402-06	3/8	0.18	0.98	0.79
K402-08	1/2	0.21	1.16	0.87
K402-12	3/4	0.32	1.40	0.98
K402-16	1	0.49	1.69	1.10
K402-20	1-1/4	0.75	2.06	1.30
K402-24	1-1/2	0.91	2.28	1.42
K402-32	2	1.48	2.83	1.69
K402-40	2-1/2	2.45	3.43	1.93
K402-48	3	2.54	3.94	2.17
K402-64	4	4.39	4.94	2.52



45 DEGREE ELBOW (316)

Part #	Size (IN.)	Approx. Net WT. (LB.)	A	L
K602-02	1/8	0.08	0.71	0.71
K602-04	1/4	0.10	0.83	0.67
K602-06	3/8	0.18	0.98	0.79
K602-08	1/2	0.21	1.16	0.87
K602-12	3/4	0.32	1.40	0.98
K602-16	1	0.49	1.69	1.10
K602-20	1-1/4	0.75	2.06	1.30
K602-24	1-1/2	0.91	2.28	1.42
K602-32	2	1.48	2.83	1.69
K602-40	2-1/2	2.45	3.43	1.93
K602-48	3	2.54	3.94	2.17
K602-64	4	4.39	4.94	2.52



**MERIT
BRASS**

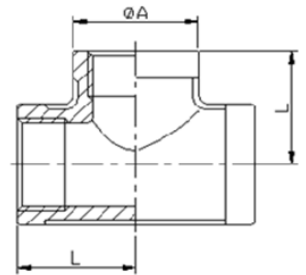
DIRECTING THE FLOW OF *Quality*

DIMENSIONAL SPECIFICATIONS

STAINLESS STEEL ISO PATTERN FITTINGS 150 LB.

TEE (304)

Part #	Size (IN.)	Approx. Net WT. (LB.)	A	L
K406-02	1/8	0.12	0.67	0.75
K406-04	1/4	0.18	0.84	0.83
K406-06	3/8	0.23	0.93	0.98
K406-08	1/2	0.34	1.18	1.10
K406-12	3/4	0.49	1.38	1.30
K406-16	1	0.80	1.69	1.50
K406-20	1-1/4	1.18	2.05	1.77
K406-24	1-1/2	1.51	2.30	1.97
K406-32	2	2.35	2.81	2.28
K406-40	2-1/2	3.94	3.43	2.72
K406-48	3	4.06	3.94	3.07
K406-64	4	7.80	4.92	3.78



MERIT
BRASS

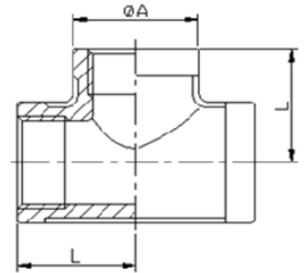
DIRECTING THE FLOW OF *Quality*

DIMENSIONAL SPECIFICATIONS

STAINLESS STEEL ISO PATTERN FITTINGS 150 LB.

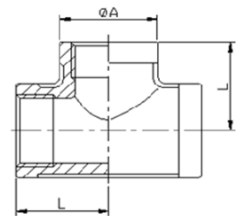
TEE (316)

Part #	Size (IN.)	Approx. Net WT. (LB.)	A	L
K606-02	1/8	0.12	0.67	0.75
K606-04	1/4	0.18	0.84	0.83
K606-06	3/8	0.23	0.93	0.98
K606-08	1/2	0.34	1.18	1.10
K606-12	3/4	0.49	1.38	1.30
K606-16	1	0.80	1.69	1.50
K606-20	1-1/4	1.18	2.05	1.77
K606-24	1-1/2	1.51	2.30	1.97
K606-32	2	2.35	2.81	2.28
K606-40	2-1/2	3.94	3.43	2.72
K606-48	3	4.06	3.94	3.07
K606-64	4	7.80	4.92	3.78



REDUCING TEE (304)

Part #	Size (IN.)	Approx. Net WT. (LB.)	A	L
K406-121208	3/4 x 3/4 x 1/2	0.50	1.38	1.18
K406-161612	1 X 1 X 3/4	0.82	1.69	1.38
K406-202016	1-1/4 X 1-1/4 X 1	1.25	2.05	1.57



MERIT BRASS

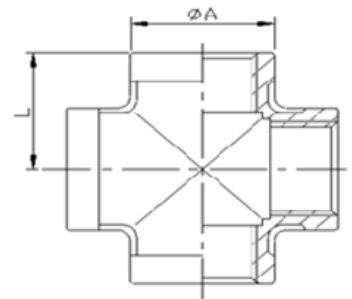
DIRECTING THE FLOW OF *Quality*

DIMENSIONAL SPECIFICATIONS

STAINLESS STEEL ISO PATTERN FITTINGS 150 LB.

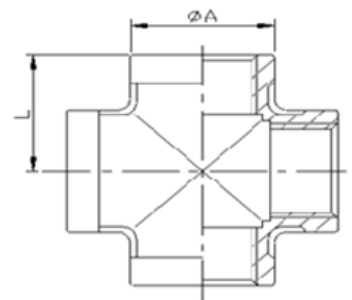
CROSS (304)

Part #	Size (IN.)	Approx. Net WT. (LB.)	A	L
K410-02	1/8	0.09	0.60	0.75
K410-04	1/4	0.16	0.78	0.83
K410-06	3/8	0.24	0.92	0.98
K410-08	1/2	0.33	1.10	1.10
K410-12	3/4	0.58	1.37	1.30
K410-16	1	0.98	1.72	1.50
K410-20	1-1/4	1.56	2.09	1.77
K410-24	1-1/2	1.66	2.28	1.97
K410-32	2	2.63	2.80	2.28
K410-40	2-1/2	4.53	3.43	2.72
K410-48	3	4.96	3.90	3.07
K410-64	4	7.93	4.92	3.78



CROSS (316)

Part #	Size (IN.)	Approx. Net WT. (LB.)	A	L
K610-02	1/8	0.09	0.60	0.75
K610-04	1/4	0.16	0.78	0.83
K610-06	3/8	0.24	0.92	0.98
K610-08	1/2	0.33	1.10	1.10
K610-12	3/4	0.58	1.37	1.30
K610-16	1	0.98	1.72	1.50
K610-20	1-1/4	1.56	2.09	1.77
K610-24	1-1/2	1.66	2.28	1.97
K610-32	2	2.63	2.80	2.28
K610-40	2-1/2	4.53	3.43	2.72
K610-48	3		3.90	3.07
K610-64	4	7.93	4.92	3.78



**MERIT
BRASS**

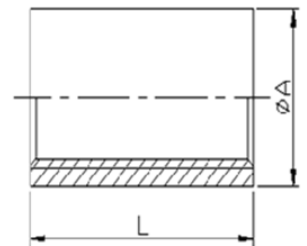
DIRECTING THE FLOW OF *Quality*

DIMENSIONAL SPECIFICATIONS

STAINLESS STEEL ISO PATTERN FITTINGS 150 LB.

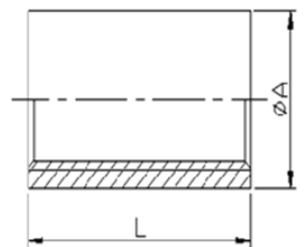
INDUSTRY STANDARD FULL COUPLING (304)

Part #	Size (IN.)	Approx. Net WT. (LB.)	A	L
KP411-02	1/8	0.04	0.57	1.01
KP411-04	1/4	0.06	0.71	1.10
KP411-06	3/8	0.06	0.85	1.19
KP411-08	1/2	0.12	1.01	1.38
KP411-12	3/4	0.16	1.19	1.59
KP411-16	1	0.25	1.48	1.72
KP411-20	1-1/4	0.39	1.84	1.97
KP411-24	1-1/2	0.58	2.09	2.23
KP411-32	2	0.90	2.58	2.56
KP411-40	2-1/2	1.34	3.11	2.91
KP411-48	3	1.97	3.76	3.23
KP411-64	4	2.94	4.77	3.72



INDUSTRY STANDARD FULL COUPLING (316)

Part #	Size (IN.)	Approx. Net WT. (LB.)	A	L
KP611-02	1/8	0.04	0.57	1.01
KP611-04	1/4	0.06	0.71	1.10
KP611-06	3/8	0.08	0.85	1.19
KP611-08	1/2	0.12	1.01	1.38
KP611-12	3/4	0.18	1.19	1.59
KP611-16	1	0.25	1.48	1.72
KP611-20	1-1/4	0.39	1.84	1.97
KP611-24	1-1/2	0.54	2.09	2.23
KP611-32	2	0.84	2.58	2.56
KP611-40	2-1/2	1.34	3.11	2.91
KP611-48	3	1.97	3.76	3.23
KP611-64	4	2.94	4.77	3.72



**MERIT
BRASS**

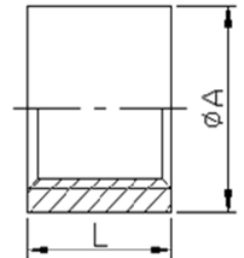
DIRECTING THE FLOW OF *Quality*

DIMENSIONAL SPECIFICATIONS

STAINLESS STEEL ISO PATTERN FITTINGS 150 LB.

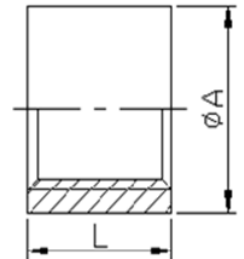
INDUSTRY STANDARD HALF COUPLING (304)

Part #	Size (IN.)	Approx. Net WT. (LB.)	A	L
KP411H-02	1/8	0.02	0.59	0.50
KP411H-04	1/4	0.03	0.73	0.57
KP411H-06	3/8	0.04	0.87	0.59
KP411H-08	1/2	0.06	1.03	0.70
KP411H-12	3/4	0.09	1.19	0.84
KP411H-16	1	0.13	1.48	0.88
KP411H-20	1-1/4	0.20	1.84	1.01
KP411H-24	1-1/2	0.27	2.09	1.13
KP411H-32	2	0.42	2.58	1.30
KP411H-40	2-1/2	0.67	3.11	1.49
KP411H-48	3	0.99	3.76	1.65
KP411H-64	4	1.47	4.77	1.91



INDUSTRY STANDARD HALF COUPLING (316)

Part #	Size (IN.)	Approx. Net WT. (LB.)	A	L
KP611H-02	1/8	0.02	0.59	0.50
KP611H-04	1/4	0.03	0.73	0.57
KP611H-06	3/8	0.04	0.87	0.59
KP611H-08	1/2	0.06	1.03	0.70
KP611H-12	3/4	0.08	1.19	0.84
KP611H-16	1	0.13	1.48	0.88
KP611H-20	1-1/4	0.20	1.84	1.01
KP611H-24	1-1/2	0.27	2.09	1.13
KP611H-32	2	0.42	2.58	1.30
KP611H-40	2-1/2	0.67	3.11	1.49
KP611H-48	3	0.99	3.76	1.65
KP611H-64	4	1.47	4.77	1.91



**MERIT
BRASS**

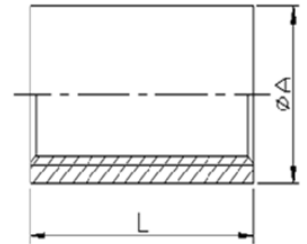
DIRECTING THE FLOW OF *Quality*

DIMENSIONAL SPECIFICATIONS

STAINLESS STEEL ISO PATTERN FITTINGS 150 LB.

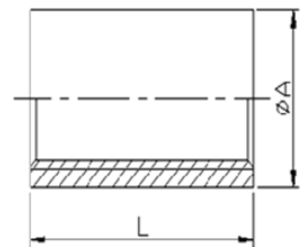
HEAVY PATTERN FULL COUPLING (304)

Part #	Size (IN.)	Approx. Net WT. (LB.)	A	L
K411-02	1/8	0.06	0.62	1.01
K411-04	1/4	0.10	0.78	1.10
K411-06	3/8	0.12	0.89	1.19
K411-08	1/2	0.18	1.11	1.38
K411-12	3/4	0.32	1.37	1.59
K411-16	1	0.49	1.65	1.72
K411-20	1-1/4	0.53	1.93	1.97
K411-24	1-1/2	0.87	2.24	2.23
K411-32	2	1.53	2.80	2.56
K411-40	2-1/2	2.65	3.40	2.91
K411-48	3	4.41	4.16	3.23
K411-64	4	6.39	5.07	3.72



HEAVY PATTERN FULL COUPLING (316)

Part #	Size (IN.)	Approx. Net WT. (LB.)	A	L
K611-02	1/8	0.06	0.62	1.01
K611-04	1/4	0.10	0.78	1.10
K611-06	3/8	0.12	0.89	1.19
K611-08	1/2	0.18	1.11	1.38
K611-12	3/4	0.32	1.37	1.59
K611-16	1	0.49	1.65	1.72
K611-20	1-1/4	0.53	1.93	1.97
K611-24	1-1/2	0.87	2.24	2.23
K611-32	2	1.53	2.80	2.56
K611-40	2-1/2	2.65	3.40	2.91
K611-48	3	4.41	4.16	3.23
K611-64	4	6.39	5.07	3.72



**MERIT
BRASS**

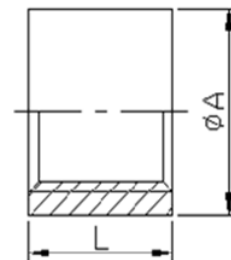
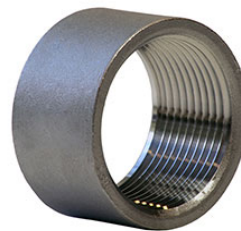
DIRECTING THE FLOW OF *Quality*

DIMENSIONAL SPECIFICATIONS

STAINLESS STEEL ISO PATTERN FITTINGS 150 LB.

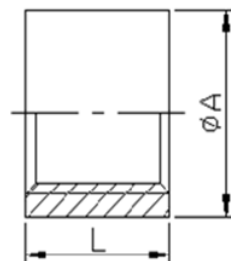
HEAVY PATTERN HALF COUPLING (304)

Part #	Size (IN.)	Approx. Net WT. (LB.)	A	L
K411H-02	1/8	0.02	0.62	0.50
K411H-04	1/4	0.04	0.79	0.57
K411H-06	3/8	0.05	0.91	0.59
K411H-08	1/2	0.09	1.09	0.70
K411H-12	3/4	0.15	1.35	0.84
K411H-16	1	0.27	1.66	0.88
K411H-20	1-1/4	0.28	1.91	1.01
K411H-24	1-1/2	0.42	2.22	1.13
K411H-32	2	0.75	2.78	1.30
K411H-40	2-1/2	1.25	3.39	1.49
K411H-48	3	2.21	4.13	1.65
K411H-64	4	3.50	5.20	1.91
K411H-96	6	3.50	7.11	1.73



HEAVY PATTERN HALF COUPLING (316)

Part #	Size (IN.)	Approx. Net WT. (LB.)	A	L
K611H-02	1/8	0.02	0.62	0.50
K611H-04	1/4	0.04	0.79	0.57
K611H-06	3/8	0.05	0.91	0.59
K611H-08	1/2	0.09	1.09	0.70
K611H-12	3/4	0.15	1.35	0.84
K611H-16	1	0.27	1.66	0.88
K611H-20	1-1/4	0.28	1.91	1.01
K611H-24	1-1/2	0.42	2.22	1.13
K611H-32	2	0.75	2.78	1.30
K611H-40	2-1/2	1.25	3.39	1.49
K611H-48	3	2.21	4.13	1.65
K611H-64	4	3.50	5.20	1.91
K611H-96	6	3.50	7.11	1.73



**MERIT
BRASS**

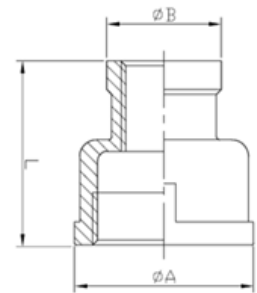
DIRECTING THE FLOW OF *Quality*

DIMENSIONAL SPECIFICATIONS

STAINLESS STEEL ISO PATTERN FITTINGS 150 LB.

REDUCING COUPLING (304)

Part #	Size (IN.)	Approx. Net WT. (LB.)	A	B	L
K412-0402	1/4 X 1/8	0.07	0.85	0.75	1.02
K412-0602	3/8 X 1/8	0.11	0.98	0.67	1.11
K412-0604	3/8 X 1/4	0.12	1.02	0.85	1.14
K412-0802	1/2 X 1/8	0.14	1.14	0.67	1.34
K412-0804	1/2 X 1/4	0.17	1.14	0.83	1.34
K412-0806	1/2 X 3/8	0.15	1.14	0.88	1.34
K412-1202	3/4 X 1/8	0.21	1.38	0.67	1.50
K412-1204	3/4 X 1/4	0.22	1.38	0.83	1.50
K412-1206	3/4 X 3/8	0.23	1.38	0.98	1.50
K412-1208	3/4 X 1/2	0.26	1.46	1.11	1.46
K412-1602	1 X 1/8	0.30	1.69	0.68	1.65
K412-1604	1 X 1/4	0.33	1.69	0.83	1.65
K412-1606	1 X 3/8	0.33	1.69	1.00	1.65
K412-1608	1 X 1/2	0.34	1.69	1.16	1.65
K412-1612	1 X 3/4	0.33	1.69	1.26	1.65
K412-2006	1-1/4 X 3/8	0.51	2.05	1.00	1.89
K412-2008	1-1/4 X 1/2	0.51	2.05	1.14	1.89
K412-2012	1-1/4 X 3/4	0.52	2.05	1.38	1.89
K412-2016	1-1/4 X 1	0.51	2.07	1.54	2.05
K412-2406	1-1/2 X 3/8	0.58	2.32	0.92	1.89
K412-2408	1-1/2 X 1/2	0.63	2.28	1.14	2.05



**MERIT
BRASS**

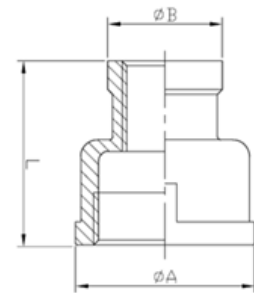
DIRECTING THE FLOW OF *Quality*

DIMENSIONAL SPECIFICATIONS

STAINLESS STEEL ISO PATTERN FITTINGS 150 LB.

REDUCING COUPLING CONTINUED (304)

Part #	Size (IN.)	Approx. Net WT. (LB.)	A	B	L
K412-2412	1-1/2 X 3/4	0.62	2.32	1.40	2.05
K412-2416	1-1/2 X 1	0.64	2.32	1.71	2.09
K412-2420	1-1/2 X 1-1/4	0.66	2.32	1.97	2.09
K412-3208	2 X 1/2	0.85	2.83	1.14	1.99
K412-3212	2 X 3/4	0.84	2.83	1.38	2.01
K412-3216	2 X 1	1.00	2.83	1.69	2.20
K412-3220	2 X 1-1/4	0.95	2.83	2.05	2.20
K412-3224	2 X 1-1/2	1.00	2.83	2.23	2.24
K412-4016	2-1/2 X 1	1.61	3.43	1.69	2.36
K412-4020	2-1/2 X 1-1/4	1.30	3.35	2.05	2.36
K412-4024	2-1/2 X 1-1/2	1.54	3.35	2.24	2.36
K412-4032	2-1/2 X 2	1.34	3.35	2.73	2.40
K412-4816	3 X 1	1.94	3.94	1.70	2.44
K412-4820	3 X 1-1/4	1.50	3.94	2.07	2.44
K412-4824	3 X 1-1/2	1.59	3.94	2.23	2.44
K412-4832	3 X 2	1.54	3.94	2.76	2.44
K412-4840	3 X 2-1/2	1.71	3.94	3.43	2.44
K412-6432	4 X 2	2.89	5.00	2.76	2.56
K412-6440	4 X 2-1/2	2.85	5.04	3.39	2.56
K412-6448	4 X 3	2.07	5.04	4.13	2.56



**MERIT
BRASS**

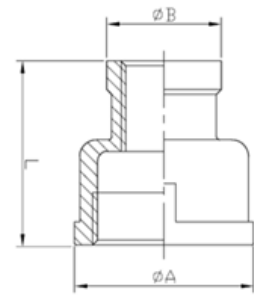
DIRECTING THE FLOW OF *Quality*

DIMENSIONAL SPECIFICATIONS

STAINLESS STEEL ISO PATTERN FITTINGS 150 LB.

REDUCING COUPLING (316)

Part #	Size (IN.)	Approx. Net WT. (LB.)	A	B	L
K612-0402	1/4 X 1/8	0.07	0.85	0.75	1.02
K612-0602	3/8 X 1/8	0.11	0.98	0.67	1.11
K612-0604	3/8 X 1/4	0.12	1.02	0.85	1.14
K612-0802	1/2 X 1/8	0.14	1.14	0.67	1.34
K612-0804	1/2 X 1/4	0.17	1.14	0.83	1.34
K612-0806	1/2 X 3/8	0.15	1.14	0.88	1.34
K612-1202	3/4 X 1/8	0.21	1.38	0.67	1.50
K612-1204	3/4 X 1/4	0.22	1.38	0.83	1.50
K612-1206	3/4 X 3/8	0.23	1.38	0.98	1.50
K612-1208	3/4 X 1/2	0.26	1.46	1.11	1.46
K612-1602	1 X 1/8	0.30	1.69	0.68	1.65
K612-1604	1 X 1/4	0.33	1.69	0.83	1.65
K612-1606	1 X 3/8	0.33	1.69	1.00	1.65
K612-1608	1 X 1/2	0.34	1.69	1.16	1.65
K612-1612	1 X 3/4	0.33	1.69	1.26	1.65
K612-2006	1-1/4 X 3/8	0.51	2.05	1.00	1.89
K612-2008	1-1/4 X 1/2	0.51	2.05	1.14	1.89
K612-2012	1-1/4 X 3/4	0.52	2.05	1.38	1.89
K612-2016	1-1/4 X 1	0.51	2.07	1.54	2.05
K612-2406	1-1/2 X 3/8	0.58	2.32	0.92	1.89
K612-2408	1-1/2 X 1/2	0.63	2.28	1.14	2.05



**MERIT
BRASS**

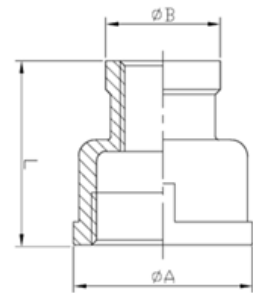
DIRECTING THE FLOW OF *Quality*

DIMENSIONAL SPECIFICATIONS

STAINLESS STEEL ISO PATTERN FITTINGS 150 LB.

REDUCING COUPLING CONTINUED (316)

Part #	Size (IN.)	Approx. Net WT. (LB.)	A	B	L
K612-2612	1-1/2 X 3/4	0.62	2.32	1.40	2.05
K612-2416	1-1/2 X 1	0.64	2.32	1.71	2.09
K612-2420	1-1/2 X 1-1/4	0.66	2.32	1.97	2.09
K612-3208	2 X 1/2	0.85	2.83	1.14	1.99
K612-3212	2 X 3/4	0.84	2.83	1.38	2.01
K612-3216	2 X 1	1.00	2.83	1.69	2.20
K612-3220	2 X 1-1/4	0.95	2.83	2.05	2.20
K612-3224	2 X 1-1/2	1.00	2.83	2.23	2.24
K612-4016	2-1/2 X 1	1.61	3.43	1.69	2.36
K612-4020	2-1/2 X 1-1/4	1.30	3.35	2.05	2.36
K612-4024	2-1/2 X 1-1/2	1.54	3.35	2.24	2.36
K612-4032	2-1/2 X 2	1.34	3.35	2.73	2.40
K612-4816	3 X 1	1.94	3.94	1.70	2.44
K612-4820	3 X 1-1/4	1.50	3.94	2.07	2.44
K612-4824	3 X 1-1/2	1.59	3.94	2.23	2.44
K612-4832	3 X 2	1.54	3.94	2.76	2.44
K612-4840	3 X 2-1/2	1.71	3.94	3.43	2.44
K612-6432	4 X 2	2.89	5.00	2.76	2.56
K612-6440	4 X 2-1/2	2.85	5.04	3.39	2.56
K612-6448	4 X 3	2.07	5.04	4.13	2.56



**MERIT
BRASS**

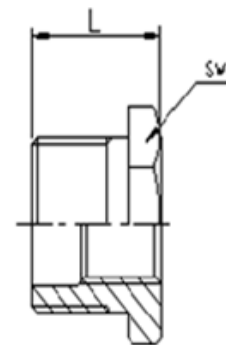
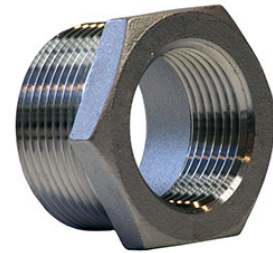
DIRECTING THE FLOW OF *Quality*

DIMENSIONAL SPECIFICATIONS

STAINLESS STEEL ISO PATTERN FITTINGS 150 LB.

HEX HEAD BUSHING (304)

Part #	Size (IN.)	Approx. Net WT. (LB.)	L	SW
K414-0402	1/4 X 1/8	0.02	0.79	0.63
K414-0602	3/8 X 1/8	0.04	0.79	0.71
K414-0604	3/8 X 1/4	0.03	0.79	0.71
K414-0802	1/2 X 1/8	0.10	0.94	1.02
K414-0804	1/2 X 1/4	0.09	0.94	1.02
K414-0806	1/2 X 3/8	0.07	0.94	1.02
K414-1202	3/4 X 1/8	0.16	1.02	1.18
K414-1204	3/4 X 1/4	0.16	1.02	1.18
K414-1206	3/4 X 3/8	0.14	1.02	1.18
K414-1208	3/4 X 1/2	0.12	1.02	1.18
K414-1602	1 X 1/8	0.20	1.14	1.38
K414-1604	1 X 1/4	0.24	1.14	1.38
K414-1606	1 X 3/8	0.22	1.14	1.38
K414-1608	1 X 1/2	0.21	1.14	1.38
K414-1612	1 X 3/4	0.17	1.14	1.38
K414-2002	1-1/4 X 1/8	0.43	1.22	1.77
K414-2004	1-1/4 X 1/4	0.43	1.22	1.77
K414-2006	1-1/4 X 3/8	0.41	1.22	1.77
K414-2008	1-1/4 X 1/2	0.42	1.22	1.77
K414-2012	1-1/4 X 3/4	0.38	1.22	1.77
K414-2016	1-1/4 X 1	0.31	1.22	1.77
K414-2404	1-1/2 X 1/4	0.68	1.22	2.05
K414-2406	1-1/2 X 3/8	0.68	1.22	2.05
K414-2408	1-1/2 X 1/2	0.70	1.22	2.05
K414-2412	1-1/2 X 3/4	0.67	1.22	2.05
K414-2416	1-1/2 X 1	0.60	1.22	2.05



**MERIT
BRASS**

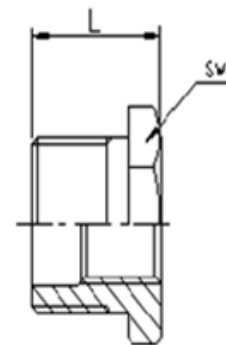
DIRECTING THE FLOW OF *Quality*

DIMENSIONAL SPECIFICATIONS

STAINLESS STEEL ISO PATTERN FITTINGS 150 LB.

HEX HEAD BUSHING CONTINUED (304)

Part #	Size (IN.)	Approx. Net WT. (LB.)	L	SW
K414-2420	1-1/2 X 1-1/4	0.45	1.22	2.05
K414-3204	2 X 1/4	0.99	1.38	2.48
K414-3206	2 X 3/8	0.95	1.38	2.48
K414-3208	2 X 1/2	0.90	1.38	2.48
K414-3212	2 X 3/4	0.82	1.38	2.48
K414-3216	2 X 1	0.77	1.38	2.48
K414-3220	2 X 1-1/4	0.79	1.38	2.48
K414-3224	2 X 1-1/2	0.66	1.38	2.48
K414-4008	2-1/2 X 1/2	1.73	1.57	3.19
K414-4012	2-1/2 X 3/4	1.66	1.57	3.19
K414-4016	2-1/2 X 1	1.66	1.57	3.19
K414-4020	2-1/2 X 1-1/4	1.51	1.57	3.19
K414-4024	2-1/2 X 1-1/2	1.43	1.57	3.19
K414-4032	2-1/2 X 2	1.20	1.57	3.19
K414-4816	3 X 1	2.76	1.73	3.72
K414-4820	3 X 1-1/4	2.52	1.73	3.72
K414-4824	3 X 1-1/2	2.47	1.73	3.74
K414-4832	3 X 2	2.26	1.73	3.74
K414-4840	3 X 2-1/2	1.85	1.73	3.74
K414-6416	4 X 1	4.25	2.01	4.72
K414-6420	4 X 1-1/4	4.38	2.01	4.72
K414-6424	4 X 1-1/2	4.08	2.01	4.72
K414-6432	4 X 2	4.34	2.01	4.72
K414-6440	4 X 2-1/2	3.59	2.01	4.72
K414-6448	4 X 3	3.29	2.01	4.72



**MERIT
BRASS**

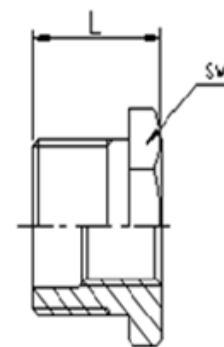
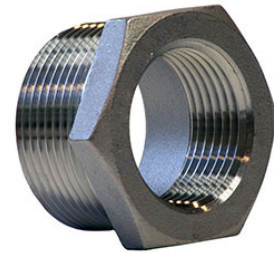
DIRECTING THE FLOW OF *Quality*

DIMENSIONAL SPECIFICATIONS

STAINLESS STEEL ISO PATTERN FITTINGS 150 LB.

HEX HEAD BUSHING (316)

Part #	Size (IN.)	Approx. Net WT. (LB.)	L	SW
K614-0402	1/4 X 1/8	0.02	0.79	0.63
K614-0602	3/8 X 1/8	0.04	0.79	0.71
K614-0604	3/8 X 1/4	0.03	0.79	0.71
K614-0802	1/2 X 1/8	0.10	0.94	1.02
K614-0804	1/2 X 1/4	0.09	0.94	1.02
K614-0806	1/2 X 3/8	0.07	0.94	1.02
K614-1202	3/4 X 1/8	0.16	1.02	1.18
K614-1204	3/4 X 1/4	0.16	1.02	1.18
K614-1206	3/4 X 3/8	0.14	1.02	1.18
K614-1208	3/4 X 1/2	0.12	1.02	1.18
K614-1602	1 X 1/8	0.20	1.14	1.38
K614-1604	1 X 1/4	0.24	1.14	1.38
K614-1606	1 X 3/8	0.22	1.14	1.38
K614-1608	1 X 1/2	0.21	1.14	1.38
K614-1612	1 X 3/4	0.17	1.14	1.38
K614-2002	1-1/4 X 1/8	0.43	1.22	1.77
K614-2004	1-1/4 X 1/4	0.43	1.22	1.77
K614-2006	1-1/4 X 3/8	0.41	1.22	1.77
K614-2008	1-1/4 X 1/2	0.42	1.22	1.77
K614-2012	1-1/4 X 3/4	0.38	1.22	1.77
K614-2016	1-1/4 X 1	0.31	1.22	1.77
K614-2404	1-1/2 X 1/4	0.68	1.22	2.05
K614-2406	1-1/2 X 3/8	0.68	1.22	2.05
K614-2408	1-1/2 X 1/2	0.70	1.22	2.05
K614-2412	1-1/2 X 3/4	0.67	1.22	2.05



**MERIT
BRASS**

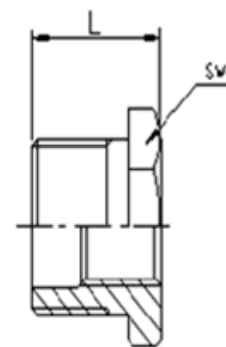
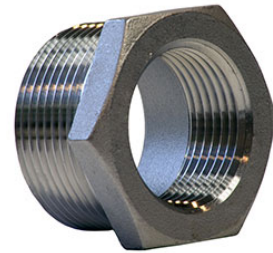
DIRECTING THE FLOW OF *Quality*

DIMENSIONAL SPECIFICATIONS

STAINLESS STEEL ISO PATTERN FITTINGS 150 LB.

HEX HEAD BUSHING CONTINUED (316)

Part #	Size (IN.)	Approx. Net WT. (LB.)	L	SW
K614-2416	1-1/2 X 1	0.60	1.22	2.05
K614-2420	1-1/2 X 1-1/4	0.45	1.22	2.05
K614-3204	2 X 1/4	0.99	1.38	2.48
K614-3206	2 X 3/8	0.95	1.38	2.48
K614-3208	2 X 1/2	0.90	1.38	2.48
K614-3212	2 X 3/4	0.82	1.38	2.48
K614-3216	2 X 1	0.77	1.38	2.48
K614-3220	2 X 1-1/4	0.79	1.38	2.48
K614-3224	2 X 1-1/2	0.66	1.38	2.48
K614-4008	2-1/2 X 1/2	1.73	1.57	3.19
K614-4012	2-1/2 X 3/4	1.66	1.57	3.19
K614-4016	2-1/2 X 1	1.66	1.57	3.19
K614-4020	2-1/2 X 1-1/4	1.51	1.57	3.19
K614-4024	2-1/2 X 1-1/2	1.43	1.57	3.19
K614-4032	2-1/2 X 2	1.20	1.57	3.19
K614-4816	3 X 1	2.76	1.73	3.72
K614-4820	3 X 1-1/4	2.52	1.73	3.72
K614-4824	3 X 1-1/2	2.47	1.73	3.74
K614-4832	3 X 2	2.26	1.73	3.74
K614-4840	3 X 2-1/2	1.85	1.73	3.74
K614-6420	4 X 1-1/4	4.38	2.01	4.72
K614-6424	4 X 1-1/2	4.08	2.01	4.72
K614-6432	4 X 2	4.34	2.01	4.72
K614-6440	4 X 2-1/2	3.59	2.01	4.72
K614-6448	4 X 3	3.29	2.01	4.72



**MERIT
BRASS**

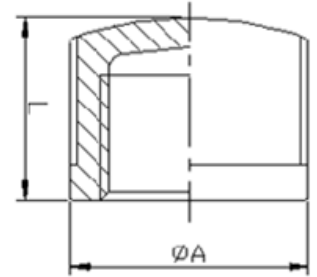
DIRECTING THE FLOW OF *Quality*

DIMENSIONAL SPECIFICATIONS

STAINLESS STEEL ISO PATTERN FITTINGS 150 LB.

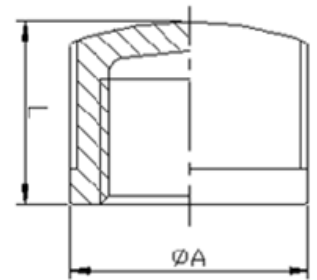
CAP (304)

Part #	Size (IN.)	Approx. Net WT. (LB.)	A	L
K416-02	1/8	0.03	0.71	0.51
K416-04	1/4	0.05	0.83	0.59
K416-06	3/8	0.07	0.94	0.67
K416-08	1/2	0.09	1.07	0.75
K416-12	3/4	0.16	1.38	0.87
K416-16	1	0.29	1.65	0.94
K416-20	1-1/4	0.45	2.05	1.06
K416-24	1-1/2	0.56	2.26	1.06
K416-32	2	0.85	2.73	1.26
K416-40	2-1/2	2.05	3.62	1.38
K416-48	3	2.82	4.17	1.50
K416-64	4	4.25	5.28	1.77



CAP (316)

Part #	Size (IN.)	Approx. Net WT. (LB.)	A	L
K616-02	1/8	0.03	0.71	0.51
K616-04	1/4	0.05	0.83	0.59
K616-06	3/8	0.07	0.94	0.67
K616-08	1/2	0.09	1.07	0.75
K616-12	3/4	0.16	1.38	0.87
K616-16	1	0.29	1.65	0.94
K616-20	1-1/4	0.45	2.05	1.06
K616-24	1-1/2	0.56	2.26	1.06
K616-32	2	0.85	2.73	1.26
K616-40	2-1/2	2.05	3.62	1.38
K616-48	3	2.82	4.17	1.50
K616-64	4	4.25	5.28	1.77



**MERIT
BRASS**

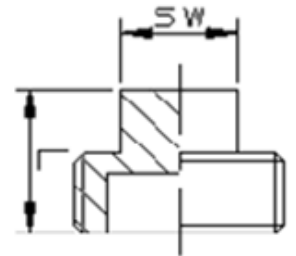
DIRECTING THE FLOW OF *Quality*

DIMENSIONAL SPECIFICATIONS

STAINLESS STEEL ISO PATTERN FITTINGS 150 LB.

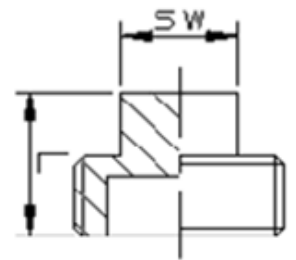
SQUARE HEAD CORED PLUG (304)

Part #	Size (IN.)	Approx. Net WT. (LB.)	L	SW
K417-08	1/2	0.08	0.71	0.51
K417-12	3/4	0.10	0.79	0.63
K417-16	1	0.21	0.91	0.79
K417-20	1-1/4	0.26	1.14	0.94
K417-24	1-1/2	0.33	1.18	0.98
K417-32	2	0.53	1.42	1.26
K417-40	2-1/2	1.36	1.54	1.65
K417-48	3	2.00	1.73	1.81
K417-64	4	3.37	2.28	2.28



SQUARE HEAD CORED PLUG (316)

Part #	Size (IN.)	Approx. Net WT. (LB.)	L	SW
K617-08	1/2	0.08	0.71	0.51
K617-12	3/4	0.10	0.79	0.63
K617-16	1	0.21	0.91	0.79
K617-20	1-1/4	0.26	1.14	0.94
K617-24	1-1/2	0.33	1.18	0.98
K617-32	2	0.53	1.42	1.26
K617-40	2-1/2	1.36	1.54	1.65
K617-48	3	2.00	1.73	1.81
K617-64	4	3.37	2.28	2.28



**MERIT
BRASS**

DIRECTING THE FLOW OF *Quality*

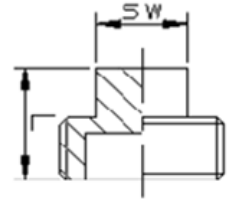
DIMENSIONAL SPECIFICATIONS

STAINLESS STEEL ISO PATTERN FITTINGS 150 LB.



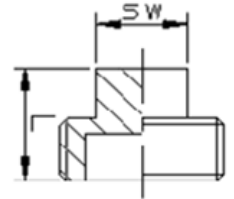
SQUARE HEAD SOLID PLUG (304)

Part #	Size (IN.)	Approx. Net WT. (LB.)	L	SW
K417A-02	1/8	0.02	0.43	0.24
K417A-04	1/4	0.04	0.55	0.35
K417A-06	3/8	0.07	0.59	0.43



SQUARE HEAD SOLID PLUG (316)

Part #	Size (IN.)	Approx. Net WT. (LB.)	L	SW
K617A-02	1/8	0.02	0.43	0.24
K617A-04	1/4	0.04	0.55	0.35
K617A-06	3/8	0.07	0.59	0.43



**MERIT
BRASS**

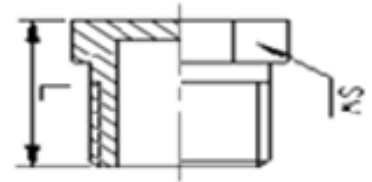
DIRECTING THE FLOW OF *Quality*

DIMENSIONAL SPECIFICATIONS

STAINLESS STEEL ISO PATTERN FITTINGS 150 LB.

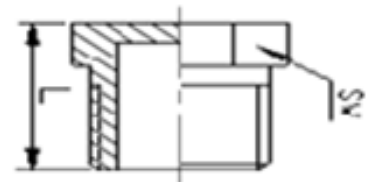
HEX HEAD PLUG (304)

Part #	Size (IN.)	Approx. Net WT. (LB.)	L	SW
K417H-02	1/8	0.03	0.67	0.47
K417H-04	1/4	0.04	0.69	0.63
K417H-06	3/8	0.08	0.71	0.79
K417H-08	1/2	0.11	0.98	0.94
K417H-12	3/4	0.16	1.02	1.18
K417H-16	1	0.26	1.14	1.50
K417H-20	1-1/4	0.45	1.38	1.81
K417H-24	1-1/2	0.66	1.50	2.05
K417H-32	2	0.97	1.54	2.56
K417H-40	2-1/2	1.55	1.73	3.19
K417H-48	3	2.51	2.13	3.74
K417H-64	4	4.34	2.17	4.69



HEX HEAD PLUG (316)

Part #	Size (IN.)	Approx. Net WT. (LB.)	L	SW
K617H-02	1/8	0.03	0.67	0.47
K617H-04	1/4	0.04	0.69	0.63
K617H-06	3/8	0.08	0.71	0.79
K617H-08	1/2	0.11	0.98	0.94
K617H-12	3/4	0.16	1.02	1.18
K617H-16	1	0.26	1.14	1.50
K617H-20	1-1/4	0.45	1.38	1.81
K617H-24	1-1/2	0.66	1.50	2.05
K617H-32	2	0.97	1.54	2.56
K617H-40	2-1/2	1.55	1.73	3.19
K617H-48	3	2.51	2.13	3.74
K617H-64	4	4.34	2.17	4.69



**MERIT
BRASS**

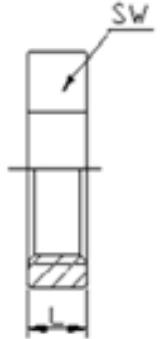
DIRECTING THE FLOW OF *Quality*

DIMENSIONAL SPECIFICATIONS

STAINLESS STEEL ISO PATTERN FITTINGS 150 LB.

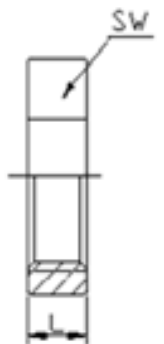
HEX LOCKNUT (304)

Part #	Size (IN.)	Approx. Net WT. (LB.)	L	SW
K419-02	1/8	0.01	0.20	0.57
K419-04	1/4	0.04	0.24	0.91
K419-06	3/8	0.05	0.28	1.02
K419-08	1/2	0.09	0.32	1.22
K419-12	3/4	0.13	0.35	1.46
K419-16	1	0.17	0.39	1.81
K419-20	1-1/4	0.25	0.43	2.17
K419-24	1-1/2	0.34	0.47	2.48
K419-32	2	0.51	0.51	2.99
K419-40	2-1/2	0.96	0.63	3.74
K419-48	3	1.08	0.75	4.13
K419-64	4	1.71	0.79	5.16



HEX LOCKNUT (316)

Part #	Size (IN.)	Approx. Net WT. (LB.)	L	SW
K619-02	1/8	0.01	0.20	0.57
K619-04	1/4	0.04	0.24	0.91
K619-06	3/8	0.05	0.28	1.02
K619-08	1/2	0.09	0.32	1.22
K619-12	3/4	0.13	0.35	1.46
K619-16	1	0.17	0.39	1.81
K619-20	1-1/4	0.25	0.43	2.17
K619-24	1-1/2	0.34	0.47	2.48
K619-32	2	0.51	0.51	2.99
K619-40	2-1/2	0.96	0.63	3.74
K619-48	3	1.08	0.75	4.13
K619-64	4	1.71	0.79	5.16



**MERIT
BRASS**

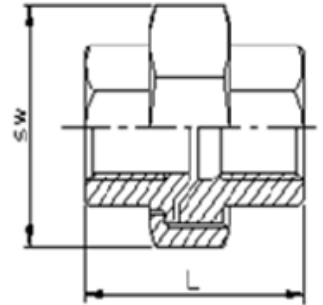
DIRECTING THE FLOW OF *Quality*

DIMENSIONAL SPECIFICATIONS

STAINLESS STEEL ISO PATTERN FITTINGS 150 LB.

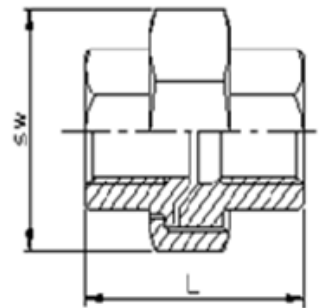
UNION (304)

Part #	Size (IN.)	Approx. Net WT. (LB.)	L	SW
K487-02	1/8	0.12	1.50	0.98
K487-04	1/4	0.22	1.65	1.18
K487-06	3/8	0.27	1.77	1.38
K487-08	1/2	0.45	1.89	1.65
K487-12	3/4	0.59	2.05	1.85
K487-16	1	0.68	2.28	2.09
K487-20	1-1/4	1.60	2.56	2.80
K487-24	1-1/2	1.73	2.76	3.03
K487-32	2	2.59	3.07	3.62
K487-40	2-1/2	4.14	3.35	4.41
K487-48	3	4.61	3.74	4.96
K487-64	4	9.56	4.33	6.18



UNION (316)

Part #	Size (IN.)	Approx. Net WT. (LB.)	L	SW
K687-02	1/8	0.12	1.50	0.98
K687-04	1/4	0.22	1.65	1.18
K687-06	3/8	0.27	1.77	1.38
K687-08	1/2	0.45	1.89	1.65
K687-12	3/4	0.59	2.05	1.85
K687-16	1	0.68	2.28	2.09
K687-20	1-1/4	1.60	2.56	2.80
K687-24	1-1/2	1.73	2.76	3.03
K687-32	2	2.59	3.07	3.62
K687-40	2-1/2	4.14	3.35	4.41
K687-48	3	4.61	3.74	4.96
K687-64	4	9.56	4.33	6.18



MERIT BRASS

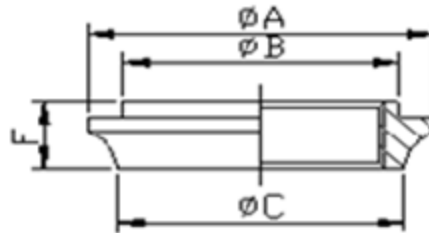
DIRECTING THE FLOW OF *Quality*

DIMENSIONAL SPECIFICATIONS

STAINLESS STEEL ISO PATTERN FITTINGS 150 LB.

WELDING SPUD (304)

Part #	Size (IN.)	Approx. Net WT. (LB.)	A	B	C	F
K445-02	1/8	0.09	1.37	0.83	0.70	0.47
K445-04	1/4	0.11	1.48	0.97	0.79	0.53
K445-06	3/8	0.13	1.61	0.97	0.91	0.51
K445-08	1/2	0.17	1.75	1.13	1.10	0.59
K445-12	3/4	0.21	1.91	1.33	1.30	0.67
K445-16	1	0.33	2.23	1.69	1.65	0.78
K445-20	1-1/4	0.44	2.58	1.93	2.04	0.75
K445-24	1-1/2	0.49	2.81	2.19	2.22	0.79
K445-32	2	0.68	3.39	2.68	2.80	0.87
K445-40	2-1/2	0.99	3.88	3.14	3.22	0.98
K445-48	3	1.04	4.50	3.67	3.82	0.94
K445-64	4	1.74	5.65	4.69	4.90	1.05



MERIT
BRASS

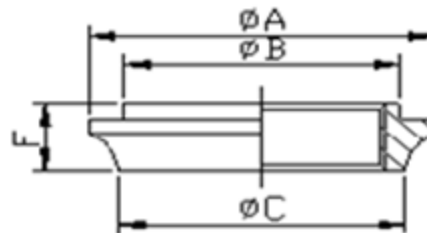
DIRECTING THE FLOW OF *Quality*

DIMENSIONAL SPECIFICATIONS

STAINLESS STEEL ISO PATTERN FITTINGS 150 LB.

WELDING SPUD (316)

Part #	Size (IN.)	Approx. Net WT. (LB.)	A	B	C	F
K645-02	1/8	0.09	1.37	0.83	0.70	0.47
K645-04	1/4	0.11	1.48	0.97	0.79	0.53
K645-06	3/8	0.13	1.61	0.97	0.91	0.51
K645-08	1/2	0.17	1.75	1.13	1.10	0.59
K645-12	3/4	0.21	1.91	1.33	1.30	0.67
K645-16	1	0.33	2.23	1.69	1.65	0.78
K645-20	1-1/4	0.44	2.58	1.93	2.04	0.75
K645-24	1-1/2	0.49	2.81	2.19	2.22	0.79
K645-32	2	0.68	3.39	2.68	2.80	0.87
K645-40	2-1/2	0.99	3.88	3.14	3.22	0.98
K645-48	3	1.04	4.50	3.67	3.82	0.94
K645-64	4	1.74	5.65	4.69	4.90	1.05



MERIT
BRASS

DIRECTING THE FLOW OF *Quality*