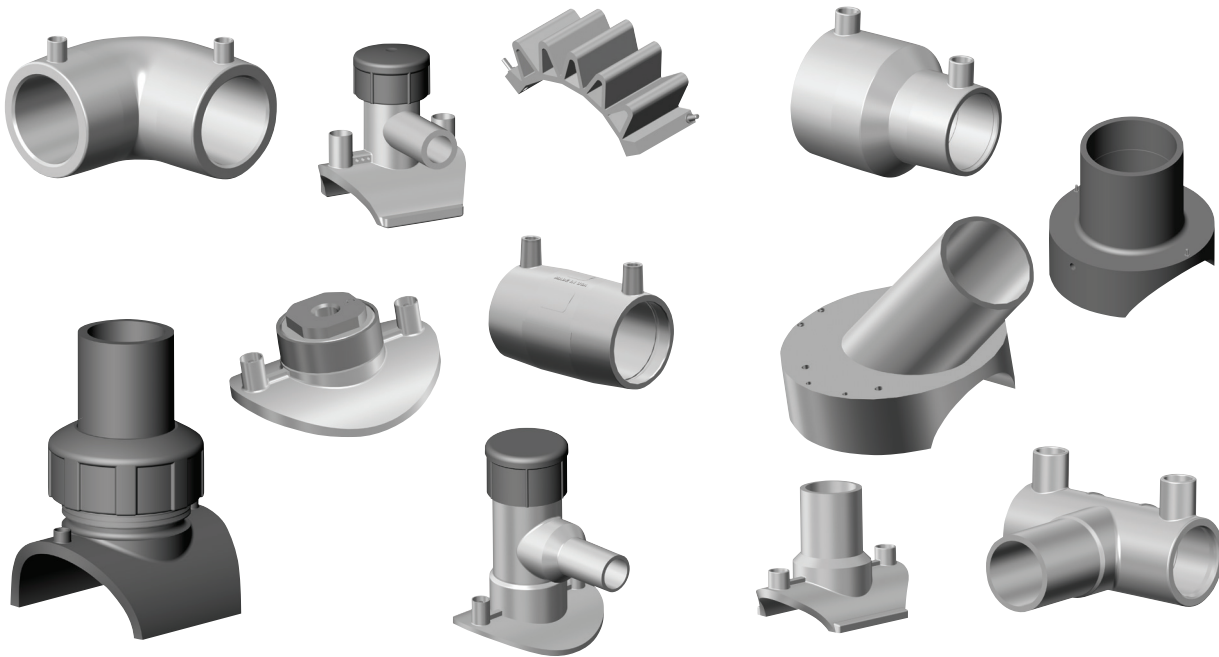


Electrofusion: Fittings Information



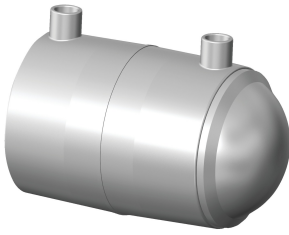
GF Central Plastics' Electrofusion fittings are designed and manufactured in accordance with ASTM F-1055 for use with pipe conforming to ASTM D2513/3035, F-714 and with Butt fittings conforming to ASTM D3261 as applicable. These fittings can be supplied with an integral identification resistor which is recognized by GF Central Plastics' processors to automatically set the proper fusion parameters. Electrofusion fittings are supplied with a 24 digit ISO compliant barcode label which facilitates the simple input of correct fusion parameters.

PE2406/PE2708 and PE3408/PE4710 Electrofusion fittings are produced from high quality virgin resins that have designated listings of PE2406/2708 or PE3408/PE4710 both of which comply with ASTM D3350.

Features

- Compatible for fusion to either PE2406/PE2708 or PE3408/PE4710 and other similar pipe.
- Cross-fusion compatible without special fusion instructions
- Pressure rated for natural gas and potable water applications.
- PE3408/PE4710 fittings utilize NSF listed resin
- PE3408/PE4710 fittings are tested to the requirements of AWWA C906
- PE3408/PE4710 fittings are FM approved (where applicable – see FM Section)
- CSA Certification (where applicable)
- Available in metric sizes

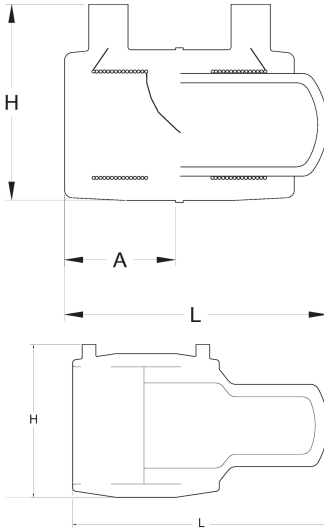
Caps



ELECTROFUSION CAP PE3408/PE4710

- Pin Type: 4.7R (4.7 Pin with Resistor)
- Approval: ASTM D2513
- Approval: ASTM F1055
- Approval: AWWA C906

Please call for more information on availability, pricing, other sizes and dimensions.



| Size (inch) | GFCP Part No. | GF weight Part No. | GF weight (lb) | H (inch) | L (inch) | A (inch) | Box Qty |
|----------------|------------------|-----------------------|-------------------|-------------|-------------|-------------|---------|
| 1/2 CTS | 5760300 | 360 004 294 | 0.132 | 1.87 | 3.15 | 1.36 | 40 |
| 1 CTS | 10004867 | 360 000 861 | 0.220 | 2.32 | 2.98 | 1.36 | 40 |
| 1 1/4 CTS | 10004561 | 360 000 864 | 0.243 | 2.56 | 4.82 | 1.87 | 30 |
| 3/4 IPS | 5760303 | 360 000 860 | 0.220 | 2.32 | 3.52 | 1.36 | 50 |
| 1 IPS | 5760305 | 360 000 862 | 0.220 | 2.56 | 3.82 | 1.57 | 40 |
| 1 1/4 IPS | 5760307 | 360 000 866 | 0.353 | 3.00 | 5.13 | 1.82 | 40 |
| 1 1/4 IPS | 5760309 | 360 003 700 | 0.573 | 3.00 | 5.13 | 1.82 | 30 |
| 2 IPS | 5760311 | 360 000 869 | 0.595 | 3.82 | 4.94 | 2.09 | 25 |
| 3 IPS | 10004564 | 360 000 871 | 2.138 | 5.18 | 10.30 | 2.72 | 10 |
| 4 IPS | 10004565 | 360 000 874 | 3.064 | 6.51 | 10.89 | 3.00 | 4 |
| 6 IPS | 10004566 | 360 000 876 | 8.951 | 8.70 | 14.71 | 4.10 | 4 |
| 8 IPS | 10004567 | 360 000 879 | 7.011 | 11.20 | 15.61 | 4.70 | 1 |
| 12 IPS | 10004563 | 360 000 868 | 41.998 | 15.70 | 17.68 | 5.75 | 1 |