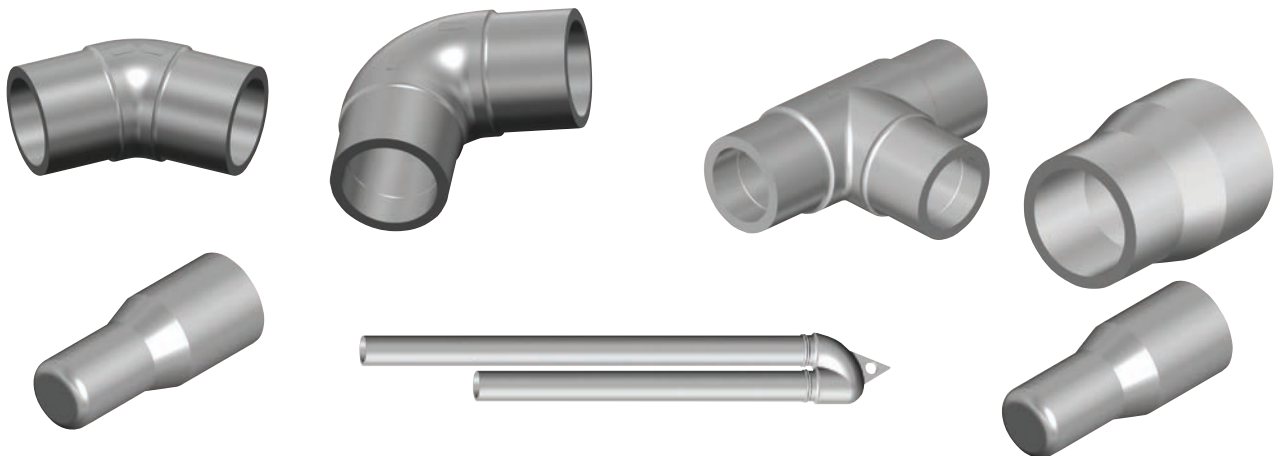


## Conventional Fusion: Butt Fusion Fittings



GF Central Plastics' Molded PE2406/PE2708 Butt fittings are manufactured and tested to the requirements of ASTM D2513 and ASTM D3261 and are sized for use with pipe conforming to ASTM D2513 and with Butt fittings conforming to ASTM D3261. GF Central Plastics' PE2406/PE2708 Butt fittings are molded from a virgin yellow medium density resin in accordance with the material specifications listed in ASTM D3350 with a designation of PE2406/PE2708. All GF Central Plastics' PE2406/PE2708 Butt Fittings are compatible for heat fusion with any pipe or fitting manufactured from a like or similar resin. GF Central Plastics' PE2406/PE2708 fittings have been qualified for fusion using PPI generic fusion procedures.

GF Central Plastics' Molded PE3408/PE4710 Butt fittings are manufactured and tested to the requirements of ASTM D2513, ASTM D3261, and ANSI/AWWA C906 for use with outside diameter controlled pipe and fittings conforming to ASTM D2513, ASTM D3035, ASTM F-714. GF Central Plastics' PE3408/PE4710 Butt fittings are molded from an NSF listed resin in accordance with the material specifications listed in ASTM D3350 with a

designation of PE3408/PE4710. GF Central Plastics' PE3408/PE4710 Butt fittings are manufactured and tested to the requirements of ASTM D2513 and ASTM D3261 (where applicable) and are compatible for heat fusion with any pipe and or fitting manufactured from a like or similar resin. GF Central Plastics' PE3408/PE4710 fittings have been qualified for fusion using PPI generic fusion procedures.

### Features

- Pressure rated for natural gas and potable water applications.
- IAPMO Approved (where applicable).
- CSA Approved (where applicable).
- PE3408/PE4710 FM Approved (where applicable).
- PE3408/PE4710 fittings are tested to the requirements of AWWA C906.
- Can be joined by butt, socket, electrofusion or mechanical methods.
- Can be heat fused with all conventional and electrofusion fusion methods.

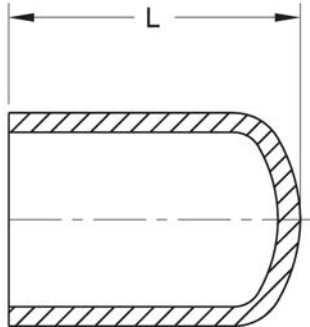
# End Caps

## End Caps, PE2406/PE2708



**BUTT FITTINGS: End Cap**  
**PE2406/PE2708**  
**CTS, Cap Style 1**

- Approval: ASTM D2513
  - Approval: ASTM D3261
  - \*Approval: CSA B137.4
- Please call for more information on availability, pricing, other sizes and dimensions.



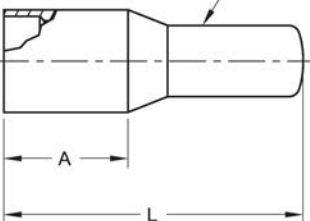
<...>	Size (inch)	WALL	GFCP Part No.	GF Part No.	weight (lb)	L (inch)	Box Qty
*	½	.090	6911497	360 000 310	0.022	1.65	100
	1	.101	6912470	360 000 317	0.022	2.18	100
	¾	.090	6912138	360 000 313	0.022	2.14	100



**BUTT FITTINGS: End Cap**  
**PE2406/PE2708**  
**IPS, Cap Style 2**

- Approval: ASTM D2513
  - Approval: ASTM D3261
  - \*Approval: CSA B137.4
  - \*\*Approval: IAPMO & CSA B137.4
- Please call for more information on availability, pricing, other sizes and dimensions.

Note: This end not machined to a nominal pipe diameter unless requested.



<...>	Size (inch)	SDR	GFCP Part No.	GF Part No.	weight (lb)	A (inch)	L (inch)	Box Qty
**	2	11	691022200000	360 002 879	0.331	3.13	7.0	100
**	3	11	691032200000	360 003 406	0.904	2.88	7.4	10
**	4	11	691042200000	360 000 344	1.367	3.00	7.8	10
	4	13.5	6910624	360 000 345	1.455	3.00	7.8	10
**	6	11/11.5	691062200000	360 003 407	4.189	4.22	10.3	5
	6	13.5	6910452	360 000 354	4.034	4.22	10.3	5
**	8	11	691082200000	360 003 409	7.826	5.14	12.4	6
*	8	13.5	6910453	360 000 366	7.804	5.14	12.4	6