



**1101 McKinley Street
Anoka, MN 55303
Phone (763) 786-6682
Fax (763) 786-2167**

Series 415 Side Fusion Tapping Saddle

The Side Fusion Branch Saddle provides a cost effective dependable fitting for the water and industrial markets. The branch saddle can be installed with the standard side fusion equipment in the market today.

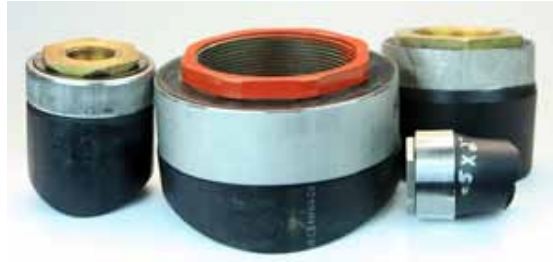
Meets ASTM D1598, D1599, D1588, and AWWA C906

- Branch outlet sizes .5"-2" NPT or CC thread (AWWA thread)
 - Main size 4"-64" diameters
 - Base size available 3" or 4" pivot head
 - Full Pressure Rated 230 PSI
-
- HDPE Branch Saddle PE 3408 ASTM D3350 (Black) Cell Classification 345454C
 - Female Threaded Insert Brass Alloy C360 AWWA C 800
 - Stainless Compression Ring Grade type 304 or 316

POLY-CAM®

1101 McKinley Street
Anoka, MN 55303
Phone (763) 786-6682
Fax (763) 786-2167

Series 415 Side Fusion Tapping Saddle



R	A	B	Base Thickness
4	3	4.5/3.5	1.0/.75
6	3	4.5/3.5	1.0/.75
8	3	4.5/3.5	1.0/.75
10	3	4.5/3.5	1.0/.75
12	3	4.5/3.5	1.0/.75
14	3	4.5/3.5	1.0/.75
16	3	4.5/3.5	1.0/.75
18	3	4.5/3.5	1.0/.75
20	3	4.5/3.5	1.0/.75
24	3	4.5/3.5	1.0/.75

