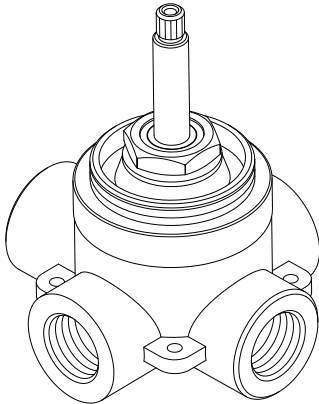


# 3-WAY IN-WALL DIVERTER ROUGH-IN VALVE

Product Code: SH6103 (3/4" NPT), SH6101 (1/2" NPT)



## Codes and Certifications



- Meets ASME A112.18.1 / CSA B125.1
- Massachusetts Accepted

## Product Features

- Brass valve body
- Six total settings allow for shared water flow between outlets, giving you the ability to use two functions at once.
- Ceramic cartridge
- Ships with 6 way transfer cartridge
- Not intended as a shut off valve
- For installations only requiring 2 outlets, the 3rd outlet may be looped into one of the existing pipes
- Requires transfer valve trim (sold separately)
- Requires additional valve(s) to control on/off operation and temperature (sold separately)

## Optional Accessories

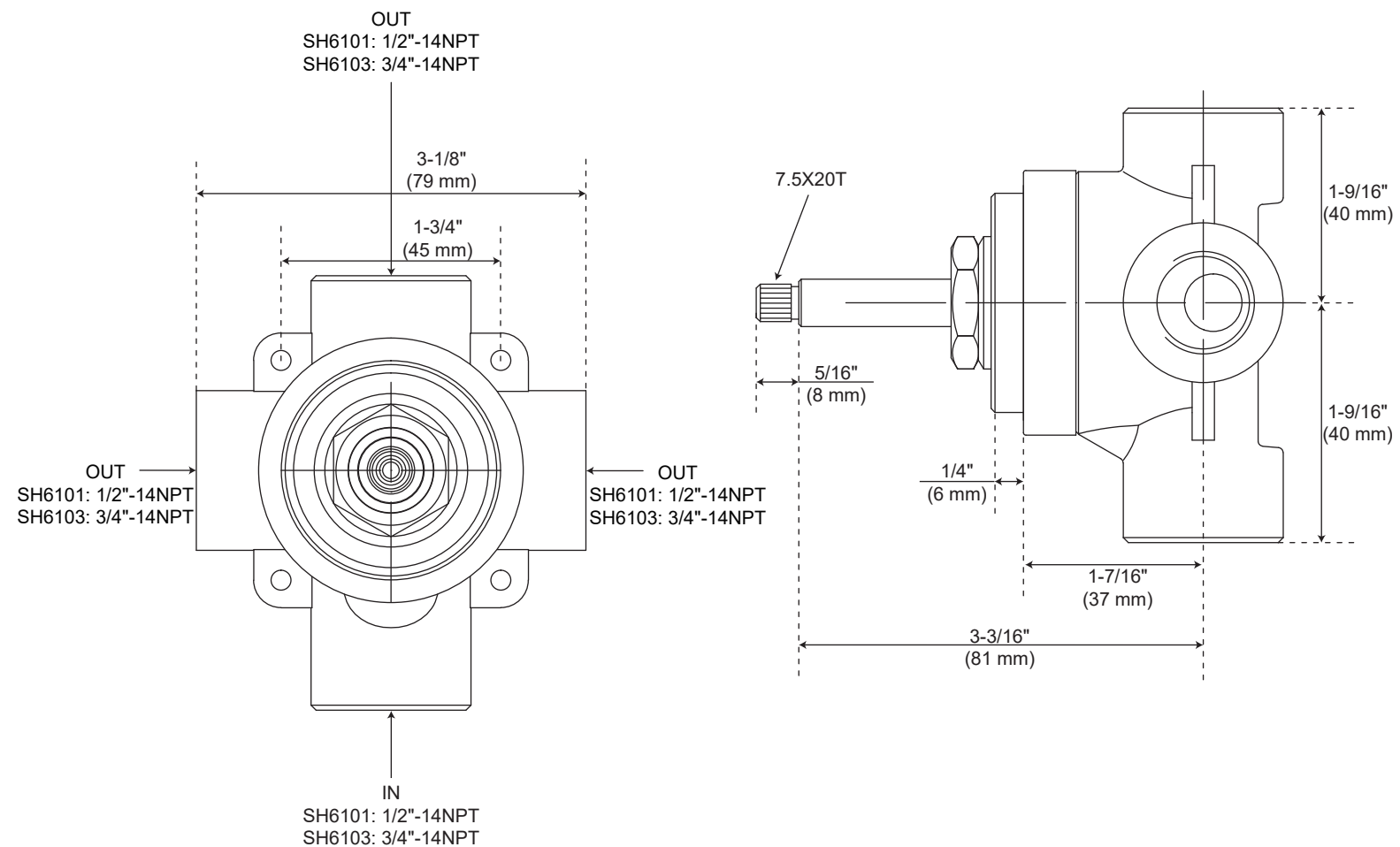
- SH6101EXT - Extension kit for 1/2" & 3/4" transfer rough-in valve
- SH6150 - CALGreen compliant cartridge (non-shared functions)
- SH6180 -Replacement 6 way replacement cartridge

Part Code	Pressure Differential - psi			
	20 psi	40 psi	60 psi	80 psi
SH6103	9.4 gpm (35.5 L/min)	13.4 gpm (50.8 L/min)	16.7 gpm (63.3 L/min)	19.7 gpm (74.6 L/min)
SH6101	9.3 gpm (35.3 L/min)	13.3 gpm (50.3 L/min)	16.4 gpm (61.9 L/min)	19.4 gpm (73.3 L/min)

Revised: 11/17/25

# 3-WAY IN-WALL DIVERTER ROUGH-IN VALVE

Product Code: SH6103 (3/4" NPT), SH6101 (1/2" NPT)



All dimensions and specifications are nominal and may vary. Use actual products for accuracy

Revised: 11/17/25