



ICEMAKERS

SUPCO® Icemaker replacement kits are designed to meet or exceed OEM specifications. Choose from universal kits or direct replacement kits.

Part numbers and illustrations are intended solely for identification. Icemakers offered are not represented to be manufactured by the original equipment manufacturer. All trademarks and registrations are the property of their respective owners.

Replacement Kits

RIM277

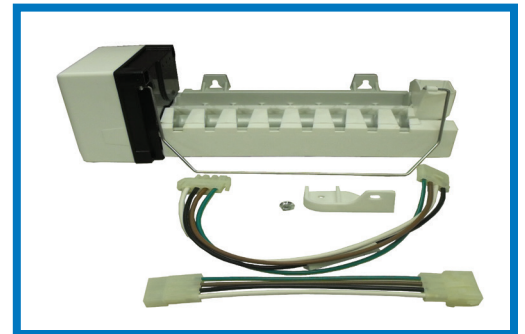
Replacement for Electrolux® 5303918277

For use with the following brands and associated model numbers:

Kenmore®, Electrolux®, Frigidaire®, Gibson®, Kelvinator®, White-Westinghouse® in 1400 different models.

5303918277, 5303291912, 218226700, 218699501, 218713500, 240352401, & 240352403

Icemaker includes 2 harnesses. Using these harnesses, this icemaker will also replace RIM115, RIM116, RIM117, Gemlime®, Mid-South® mechanical style icemakers. Using a combination of supplied wiring harnesses or your old wiring harness this unit will replace SubZero® part numbers: 4200520, 4200521, 4200522, 4201760 using your old wiring harness, this unit will replace: Amana®/ Maytag® D7824706Q.



RIM300

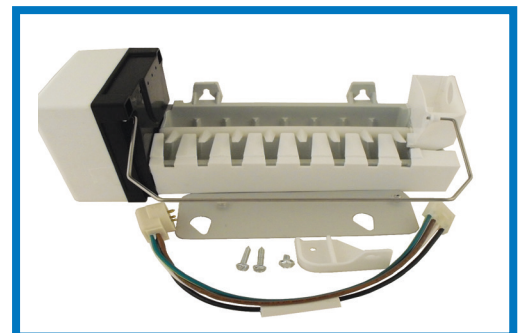
Replacement for GE® IM3, IM1, UKKIT

For use with the following brands and associated model numbers:

GE® and Hotpoint®, IM1 through IM3 series icemakers used in thousands of models.

IM1, IM2, IM3, UKKIT through UKKIT5, WR30X320, WR30X327, WR30X328, and over 100 other part numbers. Also used on Sears®/ Kenmore® with a model prefix of 363 [indicates GE® manufacture]

Offering the dependability of the modular design, this icemaker includes mounting plate to match the GE® style round plug with four pin connection.



RIM313

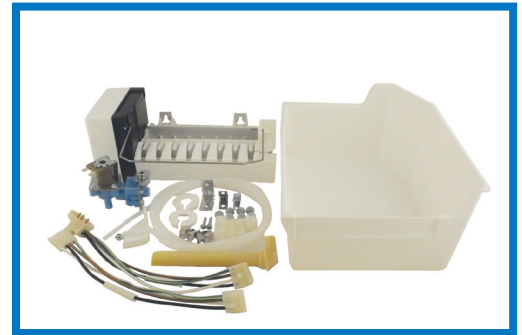
Complete add-on kit to replace Whirlpool® I129313 and ECKMF-64

For use with the following brands and associated model numbers:

Whirlpool® I129313 and ECKMF-64 add-on icemaker kit.

I105298, I114285, I118185, I118554, I118555, I118746, I129312, I129314, 468150, 8050, 8050-1, 8050-2, 8150, 940556, 941555, 984827, 987613, ECKMF2 ECKMF3, ECKMF4, ECKMF5, ECKMF11, ECKMF51, ECKMF6, ECKMF61, ECKMF63, ECKMF64, KIMF8.

Offering the modular icemaker, ice bin, water valve, fill line, tubes and harnesses; this add-on kit was designed to add an icemaker to certain pre-wired models. Used on the many Whirlpool® brands. Check model number to get the correct installation kit.



RIM316

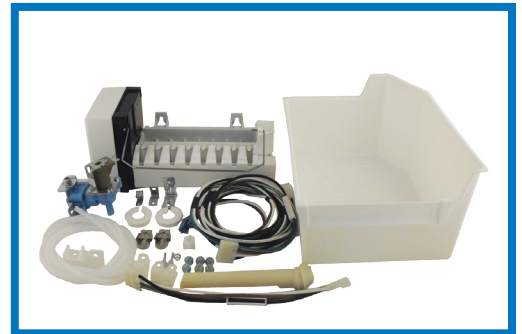
Complete add-on kit to replace Whirlpool® I129316 and ECKMF-90

For use with the following brands and associated model numbers:

Whirlpool® I129316 and ECKMF-60 add-on icemaker kit.

I108106, I108154, I114209, I118766, I127599, I129303, I129306, I129318, 2155184, 2155185, 2155186, 2155187, 2155188, 8090, 8239, 8440, 8550, 944804, ECKMF83, ECKMF831, ECKMF86, ECKMF87, ECKMF90, IMKIT, KIMS8.

Offering the modular icemaker, ice bin, water valve, fill line, tubes and harnesses; this add-on kit was designed to add an icemaker to certain pre-wired models. Used on the many Whirlpool® brands. Check model number to get the correction installation kit.



RIM469

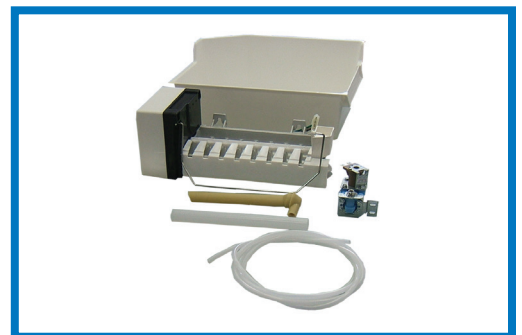
Complete replacement kit to replace Whirlpool® 2155469A and ECKMF-94

For use with the following brands and associated model numbers:

Whirlpool® 2155469A and ECKMF-94 add-on icemaker kit.

2155468, 2155469, 2171811, ECKMF94, IMKIT94, KIMS9.

While designed to replace the Whirlpool® 2155469A, this is an excellent choice to replace standard modular icemakers using your existing harness. This kit includes a new ice bin, a single coil icemaker valve and the fill tubes. If using the old wiring harness this unit can also be used on Amana®, Estate®, Maytag®, and Subzero®.



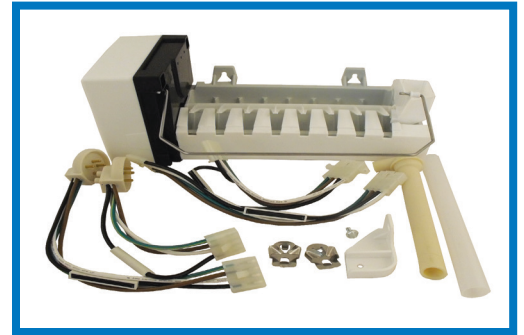
RIM500

Replacement for Whirlpool® 4211173, 4317943. Also replaces icemaker only on older Admiral® models. For use with the following brands and associated model numbers:

Kenmore® [made by Whirlpool® prefix 106]

4317943, 4210317, 4211173, 480616, 480617, 482014, 482015, 482016, 482017, 482018, 482019, 482020, 482394, 482433, 482990, 625601, 625603, 625610, 625611, 625622, 625625, 625653, 625656, 625660, 626002, 626201, 626237, 626366, 626461, 626489, 626608, 626609, 626626, 626636, 626670, 627572, 68972-4 797991, 8114, 833701, 978552, 978553, 978556, W10122496, W10190952.

Includes wiring harness for old Admiral® models.



RIM501

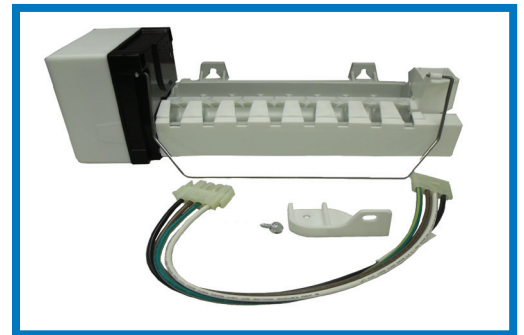
Replacement for Amana® 1110702A and D7824706Q. For use with the following brands and associated model numbers:

Amana® 1110702A kit and the bare icemaker D7824706.

Using the harness; 1110702A, 1110701A, D7567102, D7567105, D7567105A, D7621301, D7621305, D7621307, D7621310, IC-3, IC3, IC3H, IC3K, IC3N, IC3Q, IC4N, R0175023.

The RIM501, using your existing harness replaces hundreds of modular icemakers on Kenmore®, Whirlpool®, Admiral®, Amana®, Crosley®, Magic Chef®, Maytag®, SubZero® and many others.

D7824705Q, 0056504, 0056599, 0056605, 0056606, 0311155, 0312578, 0312738, 0312739, 0312740, 10543201, 10563707, 10563708, 61005508, 61005508A, 67001263, 68111-1, D7824704, D7824705, D782705, D7824705, D7824706, D7824706Q, R0154025, R0156628, R0156669, R0161059, R0161061, R0167201, R0183135, R0194462, R0194666, R0950064, Y689724, W10122519, W10190978



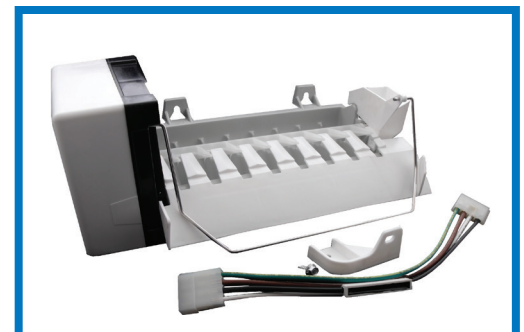
RIM597

Replacement for Whirlpool® 2198597. For use with the following brands and associated model numbers:

Whirlpool®, Kenmore®, Kitchenaid®, in 2000 different models.

2198597, 2198678, 626663, W10122502, W10190960

Offering the modular icemaker with heavy duty rake and extra wide stripper board. Excellent choice to replace the Whirlpool® 2198597 in the door icemaker as well as Kenmore®/ Coldspot® [models with starting prefix 106 or 198]. Check model number to verify application.



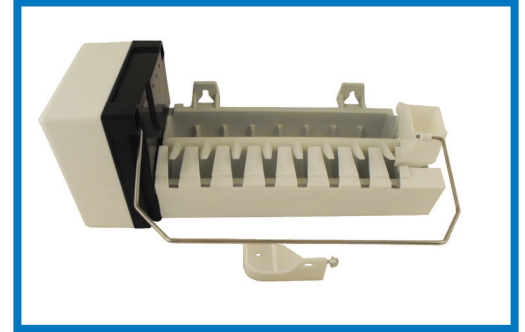
RIM900

Bare icemaker. Universal replacement for all modular style icemakers. For use with the following brands and associated model numbers:

Kenmore®, Whirlpool®, Admiral®, Amana®, Crosley®, Magic Chef®, Maytag®, SubZero®, and many more. Replaces hundreds of different modular icemakers on tens of thousands of refrigerators.

Use existing wiring harness; 8114, 0056504, 0056599, 0056605, 0056606, 311155, 312578, 312738, 10563707, 10563708, 61005508, 67001263, 312739, 312740, 480616, 480617, 4210317, 4211173, 4317943, 10549201, 482014, 482015, 482016, 482017, 482018, 482019, 482020, 482394, 482433, 482990, 625601, 625603, 61005508A, 68111-1, 68972-1, 68972-4, 625610, 625611, 625622, 625625, 625653, 625656, 625660, 626002, 626201, 626237, 626366, 626461, 626489, 626608, 626609, 626626, 626636, 626670, 627572, 797991, 68972-4, 95091-1, 95098-1, 95109-1, 833701, 840991, 853522, 941554, 978552, 978553, 978556, 1105299, D7767601, D7824701, D7824702, D7824703, D7824704, D7824705, D7824705Q, D7824706, D7824706Q, R0154025, R0156628, R0156629, R0156629, R0156669, R0161059, R0161061, R0183135, R0194462, R0194666, R0950064, W10122496, W10122519, W10190952., W10190978., Y689724.

Designed to use the existing modular icemaker wiring harness, this icemaker will replace most of the 120 VAC modular icemakers on the market today.

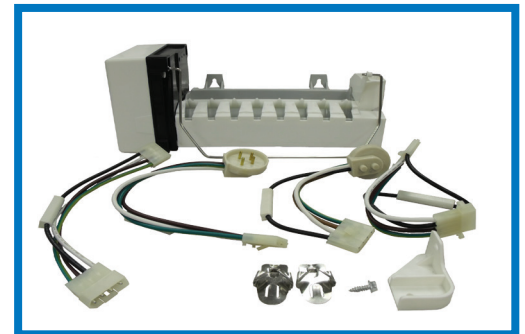


RIM943

Replacement for Whirlpool® 4317943. For use with the following brands and associated model numbers:

Kenmore® [made by Whirlpool® prefix 106]. Whirlpool® universal modular replacement.

4317943, 4210317, 4211173, 480616, 480617, 482014, 482015, 482016, 482017, 482018, 482019, 482020, 482394, 482433, 482990, 625601, 625603, 625610, 625611, 625622, 625625, 625653, 625656, 625660, 626002, 626201, 626237, 626366, 626461, 626489, 626608, 626609, 626626, 626636, 626670, 627572, 68972-4, 797991, 8114, 833701, 978552, 978553, 978556, W10122496, W10190952.

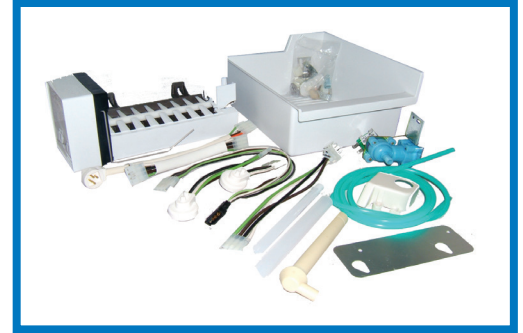


RIM2000

Universal add-on kit. Universal replacement for all modular style icemakers. For use with the following brands and associated model numbers:

Kenmore®, Whirlpool®, Admiral®, Amana®, Crosley®, GE®, Hotpoint®, Magic Chef®, Maytag®, SubZero®, and many others.

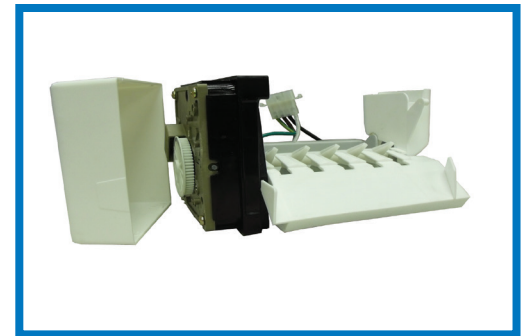
Offering the modular icemaker, ice bin, single coil water valve, fill tubes, fill line, adapter plate for GE®, and harnesses. This kit covers more brands and models than any other icemaker on the market today. Designed to replace the existing modular icemaker or install as an add-on, this icemaker will replace most of the 120 VAC modular icemakers on tens of thousands of refrigerators.



RIM961

For use with the following brands and associated model numbers:

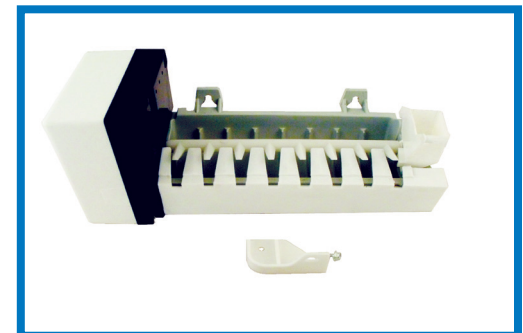
Whirlpool®, Kenmore®, Maytag®, in over 600 different models. W10190961, W10122503, 2212353, 2212352.



SZ4200520

Replacement for SubZero® 4200520 using existing harness. For use with the following brands and associated model numbers:

SubZero®
501F, 522, 532, 542, 561, 590, 221M, 201FD, 201RIM, 245, 249FF, 211, 241, 251, 2411, 2511, 361, 3211, 801, 700TCI, 700TFI



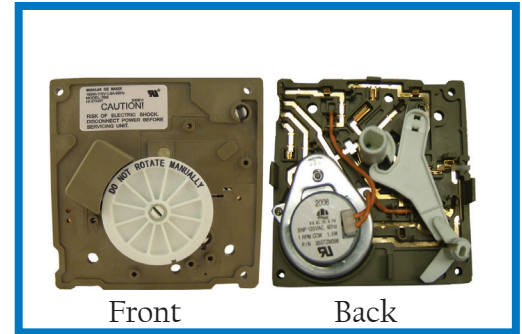
Replacement Parts

IMM8366

Icemaker control module for 120 VAC

For use with the following model numbers:

W10190935, 628366, 14210064, 483042, 483101, 483105, 626676, 626680, 626684, 627797, 627801, 627811, 627816, 628134, 628135, 628247, 628258, 628302, 628305, 628332, 628342, 628357, 628358, 628398, 628399, 8240, R0167202, R0167203, W10122536, and others.



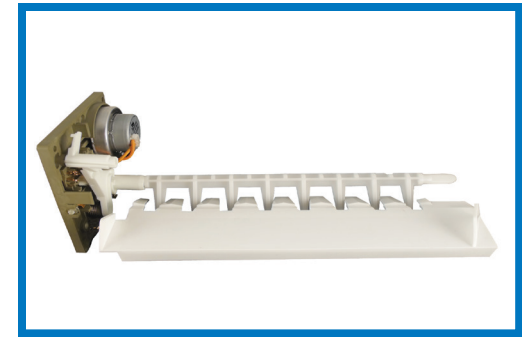
IMM1515

Module with rake & stripper.

For use with the following brands and associated model numbers:

Whirlpool®

8201515, 626653, 626678, 626683, 626691, 628519, W10122535, W10190934, W10223929.



SL7985

Harvest Thermostat

For use with the following brands and associated model numbers:

Kenmore®, Admiral®, Amana®, Maytag®, SubZero®, Whirlpool®, and other brands.

W10290336, 627985, 0056603, 95092-1, 14210687, 627808, 627984, 628209, 628397, R0161060, R9800701, Y0056603.

This harvest thermostat opens at 32°F, (± 3°F) and closes to harvest at 17°F, (± 3°F).



Installation Kits

WV8046

Water Valve

Universal hardware

Replaces: WPL 4318046



WV8047

Water Valve

Universal hardware

Replaces: WPL 4318047

