


# TC AutoFoam Touch-Free Dispenser



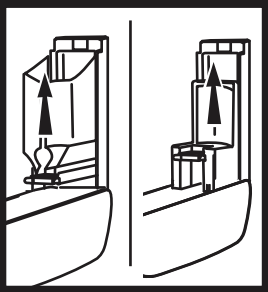
technical concepts  
Innovative Hygiene Solutions

## Installation Instructions

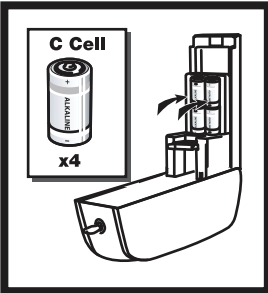
### Battery Installation

- 

Use the dispenser cabinet key to open the front cover. Insert the key into the holes located at the top of the dispenser, twisting the key, and pulling the cover towards you. The cover is hinged at the bottom of the dispenser.

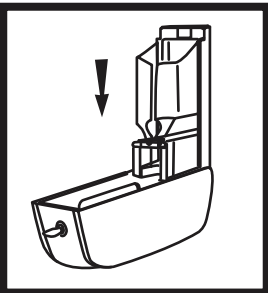
- 

Remove the soap refill pouch holder by pulling it straight up.

- 

Insert four C-cell **alkaline** batteries (not included) making sure to place batteries in the compartment in the proper orientation as shown by the diagram in the battery compartment.

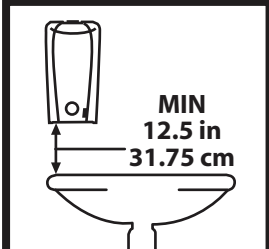
Replace the soap refill pouch holder.

- 

The dispenser will turn "on" automatically once batteries are installed.\* You will hear a long beep signifying the unit is activated.

\* If the dispenser appears non-functional, remove batteries, wait 4 minutes and re-insert them.

### Mounting Dispenser

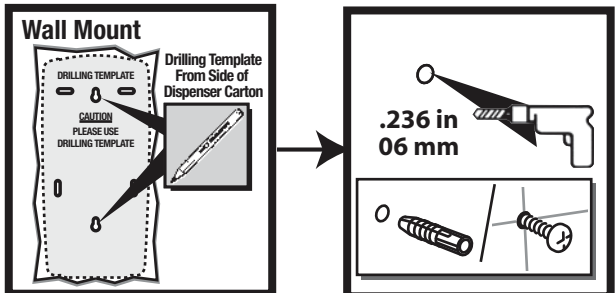
- 

The dispenser should be mounted 12.5 inches (31.75 cm) above the counter-top, sink or other surface. If an object remains in the sensing range for more than 10 seconds, the green LED will flash and no soap will be dispensed after the initial dose. Remove object and unit will operate normally

- Once the batteries have been installed, without a refill installed in dispenser, close dispenser cover. The setup sequence will be initiated. During this period, the sensor will automatically detect if the dispenser is too close to a surface below by sounding a beeping tone every half-second and the green indicator light will flash once each second. As you are positioning the dispenser, you can verify the proper mounting distance by moving the dispenser away from the surface below the sensor until the tone and the green indicator light cease. **The dispenser can be mounted to either a mirror or a tile surface using the double-sided tape provided (2a) or mounting the dispenser to the wall (2b).**

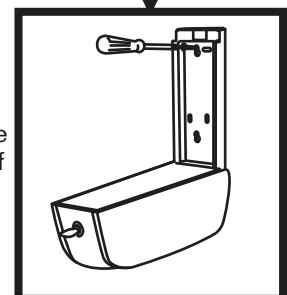
- 

Use the alcohol wipe provided to thoroughly clean any surface that will have adhesive tape attached. Pull off the protective backing off the adhesive tape and mount the dispenser to the wall holding it in place for 10-15 seconds allowing the tape to adhere to the mounting surface. Remove the batteries from the dispenser. **Let the dispenser set up for 24 hours before installing the batteries and refill.**

- 

**Wall Mount**  
Drilling Template From Side of Dispenser Carton  
CAUTION PLEASE USE DRILLING TEMPLATE  
.236 in  
06 mm

Using the template from the dispenser carton, drill holes into wall with a 1/4" or 6mm drill bit where dispenser is to be mounted. Remove template and align holes in backplate of dispenser with the pre-drilled holes. Screws and anchors have been provided to mount the dispenser to the wall.

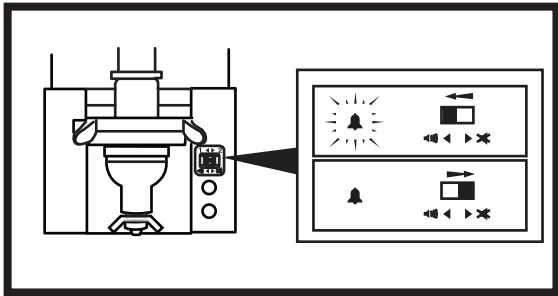


**NOTE:** Insure that proper mounting hardware is used for your particular wall composition.

## Dispenser Activation

- 1 To activate dispenser, place hand under bottom of dispenser. If a second dose is needed, remove hand, and then replace hand under dispenser (when an object comes within 4 inches of the sensing window the dispenser will activate).
- 2 The dispenser cover must be closed to activate.

## LED/Tone Indicators



### Tone switch:

When switch is set to ON position there will be one beep.  
When switch is set to OFF position there will be two beeps.

**Note:** Top "1-2" switch is not functional.

### LED Indicators and Tone (IR sensor error indications):

#### Refill

After 2,650 doses a red LED flashes twice every 2 seconds along with two beeps every 8 seconds indicating the refill needs to be replaced. Be careful to not remove or dislodge the refill while modifying any settings, as the dosing program will reset.

#### Batteries

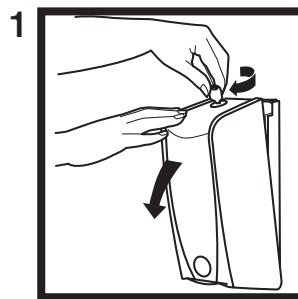
When the batteries are low a yellow LED flashes once every 2 seconds, along with one beep every 16 seconds. 4 C-cell alkaline batteries will last 120,000 hand washes or 3 years, whichever comes first.

### Object in Sensor Range (within 4 inches of sensor):

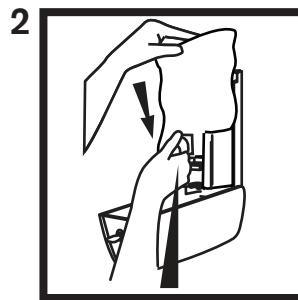
**Refill in dispenser** - If an object is in the sensor range more than 10 seconds then the green LED will flash once every second, one beep every 1/2 second. Remove object and unit will operate normally.

**No refill in dispenser** - If an object is in the sensor range then the green LED blinks once every second and beeps every 1/2 second continuously as long as object remains in sensing range.

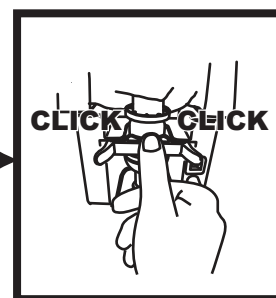
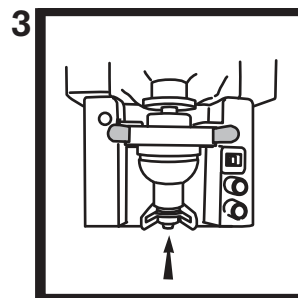
## Refill Insertion



Open dispenser cover with a dispenser cabinet key.



Remove the refill pouch from the packaging box. Place the refill pouch with the nozzle pointing down into the pouch holder. Remove and discard the nozzle cap.



**Snap the pouch fitment into the U-shaped bracket insuring the nozzle fits into actuator lever.** The pouch fitment will snap into place once both brackets have snapped over the fitment.

**You will hear a long beep once the refill is properly installed.**

- 4 Close dispenser cover.

- 5 Test for proper operation, by dispensing soap into hand.

**NOTE: The dispenser and dose program resets automatically each time a refill is installed. Sensor lens should be cleaned after the refill is replaced.**



**technical concepts**

Innovative Hygiene Solutions

**World Headquarters:**  
Serving North and South America

Technical Concepts LLC  
1301 Allanson Road  
Mundelein, Illinois 60060 U.S.A.  
**Toll Free: 1-800-551-5155**  
**Fax: 1-800-551-5046**

[www.technicalconcepts.com](http://www.technicalconcepts.com)

**European Headquarters:**  
Serving Europe, Africa and Middle East

Technical Concepts International Ltd.  
Peterborough, PE2 6WA, England  
Phone: +44 (0)870 568 6824

**Asian Headquarters:**  
Serving Asia and Pacific

Technical Concepts Asia  
No. 887, Jalan Perindustrian Bukit  
Minyak, Bukit Minyak  
14100, Penang, Malaysia  
Phone: (60) 4 508 5008

