

Commercial Ultra Low NOx Atmospheric Vent Gas Water Heater



Photo is of
U-65L-155E-3N

The Ultra Low NOx Models feature:

- **ICON HD™**—The proven design of an intelligent Honeywell® Integrated Control combines temperature control, diagnostic codes, and system functions and status into a single control with a digital LCD display.
 - **Operation Mode**—Simple, intuitive temperature adjustment up to 180°F/82°C. The user can easily select between Fahrenheit and Celsius.
 - **Service Mode**—The display has a “Service Mode” for changing the maximum setpoint and accessing information that may aid in the service of the water heater. These eight digitally displayed service screens can be easily cycled through by pressing the select button. The service screens include: max setpoint value, water temperature reading, flame current of pilot flame sensor, current temperature setpoint, F°/C° display change, temperature differential, software version, and error code history (up to ten previous error codes).
- **Premix Power Burner**—A self compensating negative pressure system automatically regulates fuel flow when a change in combustion air is detected. This provides for optimum combustion and efficiency. Automatically adjusts for altitudes up to 10,000 ft.
- **Direct Spark Ignition**—For improved operational dependability and durability.
- **Factory Installed Recirculation System**—Designed to reduce thermal stratification throughout the tank.
- **Integrated Exhaust System**—New configuration and vent connector height allow for easy replacement of existing atmospheric vent water heaters.
- **Sanitizing Capability**—Complies with sanitation capabilities up to 180°F (82°C).
- **Factory Installed Hydrojet® Sediment Reduction System**—Cold water inlet sediment reducing device helps prevent sediment build up in the tank.
- **Vitraglas® Lining**—Bradford White tanks are lined with an exclusively engineered enamel formula that provides superior tank protection from the highly corrosive effects of hot water. Vitraglas® is fused to the steel surface by firing at a temperature of over 1600°F (871°C).
- **Non-CFC Foam Insulation**—Covers the sides of tank, reducing the amount of heat loss. This results in less energy consumption, improved operation efficiencies and jacket rigidity.
- **Water Connections**—Factory installed true dielectric waterway fittings extend water heater life and eases installation.
- **Horizontally Configured Magnesium Anode Rods**—Can easily be serviced from the side of the water heater (65 gallon has 3 anodes; 100 gallon has 5 anodes).
- **14 Models Available**—65-100 gallon capacities, 155,000-399,999 BTU/Hr.
- **84% Thermal Efficiency.**
- **Zero Inch Clearance to Combustibles.**
- **Hand Hole Cleanout.**
- **NSF Construction Available.**
- **T&P Relief Valve**—Installed.
- **Low Restriction Brass Drain Valve**—Durable tamper proof design.
- **Ultra Low NOx Construction Standard (14 ng/J NOx emissions).**
- **CSA Certified Low Lead Content.**

FEATURING:



3 or 5-Year Limited Tank Warranties / 1-Year Limited Warranty on Component Parts.

For more information on warranty, please visit www.bradfordwhite.com

For products installed in USA, Canada and Puerto Rico. Some states do not allow limitations on warranties. See complete copy of the warranty included with the heater.

Commercial Gas Ultra Low NOx Water Heater

Ultra Low NOx Energy Saver Models

Meet or exceed ASHRAE 90.1b (current standard) C.E.C. Listed

NATURAL GAS

Model Number	Capacity		Input Nat. BTU/Hr. Input	1 ST Hour Delivery at 100°F Rise Gal.	GPH Recovery at Degree Rise*			Therm. Eff. %	A Floor to Top of Vent in.	B Jacket Dia. in.	C Vent. Dia. in.	D Floor to Hot Water Outlet in.	E Floor to Gas Conn. in.	F Floor to Cold Water Inlet in.	G Floor to T&P Conn. in.	H Floor to Top of Heater in.	Water Conn. Dia. in.	Gas Conn. Dia. in.	Relief Valve Open in.	Approx. Shipping Weight lbs.
	U.S. Gal.	Imp. Gal.			40°F	100°F	140°F													
U-65L-155E-3N	65	50	155,000	203	395	158	113	84.0	56 ¹ / ₄	28 ¹ / ₄	6	39 ¹ / ₂	58	10 ¹ / ₂	37	61	1 ¹ / ₂	3/4	3/4	605
U-65L-199E-3N	65	50	199,999	250	509	204	145	84.0	56 ¹ / ₄	28 ¹ / ₄	6	39 ¹ / ₂	58	10 ¹ / ₂	37	61	1 ¹ / ₂	3/4	3/4	605
U-65L-270E-3N	65	50	270,000	320	687	275	196	84.0	56 ¹ / ₄	28 ¹ / ₄	6	39 ¹ / ₂	58	10 ¹ / ₂	37	61	1 ¹ / ₂	3/4	3/4	605
U-100L-199E-3N	100	83	199,999	274	509	204	145	84.0	56 ¹ / ₄	28 ¹ / ₄	6	55 ³ / ₄	74 ¹ / ₂	10 ¹ / ₂	53 ¹ / ₄	77 ¹ / ₄	1 ¹ / ₂	3/4	3/4	700
U-100L-270E-3N	100	83	270,000	345	687	275	196	84.0	56 ¹ / ₄	28 ¹ / ₄	6	55 ³ / ₄	74 ¹ / ₂	10 ¹ / ₂	53 ¹ / ₄	77 ¹ / ₄	1 ¹ / ₂	3/4	1	700
U-100L-300E-3N	100	83	300,000	375	764	305	218	84.0	57 ¹ / ₄	28 ¹ / ₄	7	55 ³ / ₄	74 ¹ / ₂	10 ¹ / ₂	53 ¹ / ₄	77 ¹ / ₄	1 ¹ / ₂	3/4	1	700
U-100L-399E-3N	100	83	399,999	477	1018	407	291	84.0	57 ¹ / ₄	28 ¹ / ₄	8	55 ³ / ₄	74 ¹ / ₂	10 ¹ / ₂	53 ¹ / ₄	77 ¹ / ₄	1 ¹ / ₂	1	1	700

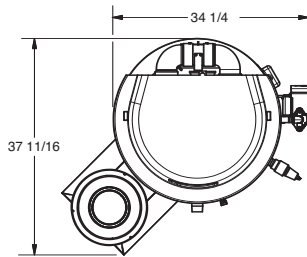
Model Number	Capacity		Input Nat. kW Input	1 ST Hour Delivery at 56°C Rise Liters	LPH Recovery at Degree Rise*			Therm. Eff. %	A Floor to Top of Vent mm.	B Jacket Dia. mm.	C Vent. Dia. mm.	D Floor to Hot Water Outlet mm.	E Floor to Gas Conn. mm.	F Floor to Cold Water Inlet mm.	G Floor to T&P Conn. mm.	H Floor to Top of Heater mm.	Water Conn. Dia. mm.	Gas Conn. Dia. mm.	Relief Valve Open mm.	Approx. Shipping Weight kgs.
	Liters				22°C	56°C	78°C													
U-65L-155E-3N	246	45.4	768	1495	598	427	84.0	1428	718	152	1003	1473	267	940	1549	38	19	19	274	
U-65L-199E-3N	246	58.6	946	1927	772	549	84.0	1428	718	152	1003	1473	267	940	1549	38	19	19	274	
U-65L-270E-3N	246	79.1	1211	2601	1041	742	84.0	1428	718	152	1003	1473	267	940	1549	38	19	19	274	
U-100L-199E-3N	379	58.6	1037	1927	772	549	84.0	1428	718	152	1416	1892	267	1353	1962	38	19	19	318	
U-100L-270E-3N	379	79.1	1306	2601	1041	742	84.0	1428	718	152	1416	1892	267	1353	1962	38	19	25	318	
U-100L-300E-3N	379	87.9	1420	2892	1155	825	84.0	1454	718	178	1416	1892	267	1353	1962	38	19	25	318	
U-100L-399E-3N	379	117.2	1806	3854	1541	1102	84.0	1454	718	203	1416	1892	267	1353	1962	38	25	25	318	

Available in Natural Gas only.

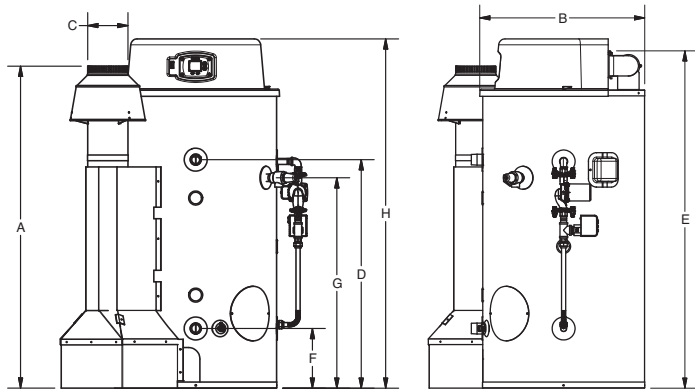
Complies with the latest Ultra-Low NOx requirements — 14 ng/joule or less.

Amp Draw range = 1.0 to 2.6 amps.

Gas Pressure: 14.0" w.c. maximum static, 4.5" w.c. minimum running
(recommend 7.0" w.c. minimum running)



Note: Diagrams are for both 65 and 100 gallon models.



Sample Specification

The water heater shall be a Bradford White model U-____ with a rated storage capacity of not less than ____ gallons/ liters, a minimum gas input of _____ BTU/Hr., a minimum recovery of ____ GPH/LPH at 100°F (56°C) temperature rise, a Thermal Efficiency Rating of 84%, and produce 14 ng/J or less of NOx emissions. It shall be design certified by CSA International (formerly AGA and CGA) for 180°F (82°C) application, either with or without a separate storage tank. The tank shall be lined with Vitraglas® vitreous enamel and shall have a bolted hand hole cleanout. This water heater shall be equipped with stainless steel cold water inlet, Hydrojet® Sediment Reduction System. The heater shall be insulated with Non-CFC foam. This water heater shall be equipped with an electronic ignition system, an ASME rated T&P relief valve and a premix combustion system. The water heater shall be factory assembled and tested. The water heater shall be approved for zero inch clearance to combustibles. A digital LCD display shall be integrated into the front and be an adjustable electronic thermostat to any temperature up to 180°F. A recycling Energy Cut Off (E.C.O.) shuts off all gas in the event of an overheat condition. The entire installation shall be made in compliance with state and local codes and ordinances.

General

All gas water heaters are certified at 300 PSI test pressure (2068 kPa) and 150 PSI working pressure (1034 kPa). All models are design certified by CSA International (formerly AGA/CGA), to ANSI standard Z-21.10.3, for up to 180°F (82°C) application as an Automatic Storage Heater. As an Automatic Storage Heater, all models are complete, self-contained water heating systems. It needs no separate storage tank, pump, wiring or elaborate piping network. When equipped with a mixing valve, it can supply 180°F (82°C) sanitizing and lower temperature general purpose hot water simultaneously. These models can be used either as a single unit or in multiples connected in series or parallel (recommended).

Dimensions and specifications subject to change without notice in accordance with our policy of continuous product improvement.



Ambler, PA

For U.S. and Canada field service, contact your professional installer or local Bradford White sales representative.

Sales 800-523-2931 • Fax 215-641-1670 / Technical Support 800-334-3393 • Fax 269-795-1089 • Warranty 800-531-2111 • Fax 269-795-1089

International: Telephone 215-641-9400 • Telefax 215-641-9750 / www.bradfordwhite.com



BRADFORD WHITE-CANADA INC. Sales / Technical Support 866-690-0961 / 905-238-0100 • Fax 905-238-0105 / www.bradfordwhite.com

Built to be the Best™

©2012, Bradford White Corporation. All rights reserved.