

CONCEALED SPRINKLER COVER PLATES

RESIDENTIAL CONCEALED COVER PLATES

“THE INCH” One Inch Adjustable Residential Concealed Sprinklers Finish/Part No. 135°F (57°C)

- Chrome: 332891
- White: 332892
- cULus Approved: *GL4906* - 155°F (68°C) Sprinkler with 135°F (57°C) plate
- FOR FULL DESCRIPTION SEE PAGE: A-10



Domed Adjustable Residential Concealed Sprinklers

Finish/Part No. 135°F (57°C)

- Chrome: 326046
- White: 326048
- cULus Approved: *GL4147, GL4947* - 155°F (68°C) Sprinkler with 135°F (57°C) plate
- FOR FULL DESCRIPTION SEE PAGE: A-8



COMMERCIAL CONCEALED COVER PLATES

“THE INCH” One Inch Adjustable Concealed Sprinklers

2 3/4” Diameter Finish/Part No. 135°F (57°C)

- Chrome: 332724
- White: 332726

2 3/4” Diameter Finish/Part No. 155°F (68°C)

- Chrome: 332729
- White: 332731

3 5/16” Diameter Finish/Part No. 135°F (57°C)

- Chrome: 332704
- White: 332706

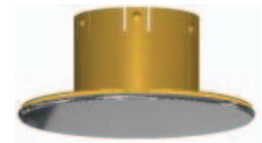
3 5/16” Diameter Finish/Part No. 155°F (68°C)

- Chrome: 332709
- White: 332711

•cULus Approved: *GL5606, GL5653* - 135°F (57°C) Sprinkler with 135°F (57°C) plate; 155°F (68°C) Sprinkler with 135°F (57°C) plate; 155°F (68°C) Sprinkler with 155°F (68°C) plate; 175°F (79°C) Sprinkler with 155°F (68°C) plate; 200°F (93°C) Sprinkler with 155°F (68°C) plate

•FM Approved: *GL5606, GL5653* - 155°F (68°C) Sprinkler with 135°F (57°C) plate; 175°F (79°C) Sprinkler with 155°F (68°C) plate; 200°F (93°C) Sprinkler with 155°F (68°C) plate

•FOR FULL DESCRIPTION SEE PAGES: A-38 & A-69



“THE INCH” One Inch Adjustable Dry Concealed Sprinklers

Finish/Part No. 135°F (57°C)

- Chrome: 332891
- White: 332892

Finish/Part No. 155°F (68°C)

- Chrome: 332897
- White: 332898

•cULus / FM Approved: *GL5634, GL5689, GL8134, GL8189* - 135°F (57°C) Sprinkler with 135°F (57°C) plate; 155°F (68°C) Sprinkler with 135°F (57°C) plate; 175°F (79°C) Sprinkler with 155°F (68°C) plate; 200°F (93°C) Sprinkler with 155°F (68°C) plate

•FOR FULL DESCRIPTION SEE PAGES: A-54 & A-89



CONCEALED SPRINKLER COVER PLATES

COMMERCIAL CONCEALED COVER PLATES

Flat Plate "3-Step" Concealed Sprinklers

Finish/Part No. 135°F (57°C)

- Chrome: 325435
- White: 325437

Finish/Part No. 155°F (68°C)

- Chrome: 325440
- White: 325442



- **cULus Approved:** *GL2804, GL2854, GL4204, GL4254, GL5604, GL5605, GL5637, GL5638, GL5654, GL5681, GL5682, GL8137, GL8181* - 135°F (57°C) Sprinkler with 135°F (57°C) plate; 155°F (68°C) Sprinkler with 135°F (57°C) plate; 155° (68°C) Sprinkler with 155°F (68°C) plate; 175° (79°C) Sprinkler with 155°F (68°C) plate; 200°F (93°C) Sprinkler with 155°F (68°C) plate; *GL5655* - 135° (57°C) Sprinkler with 135°F (57°C) plate; 155°F (68°C) Sprinkler with 135°F (57°C) plate
- **FM Approved:** *GL5654* - 135°F (57°C) Sprinkler with 135°F (57°C) plate; 155°F (68°C) Sprinkler with 135°F (57°C) plate; 155° (68°C) Sprinkler with 155°F (68°C) plate; 175° (79°C) Sprinkler with 155°F (68°C) plate; 200°F (93°C) Sprinkler with 155°F (68°C) plate; *GL5637, GL5681* - 135° (57°C) Sprinkler with 155°F (68°C) plate; 155°F (68°C) Sprinkler with 200°F (93°C) plate
- **LPC, CE Approved:** *GL5604, GL5654* - 135°F (57°C) Sprinkler with 135°F (57°C) plate; 155°F (68°C) Sprinkler with 135°F (57°C) plate; 155° (68°C) Sprinkler with 155°F (68°C) plate; 175° (79°C) Sprinkler with 155°F (68°C) plate; 200°F (93°C) Sprinkler with 155°F (68°C) plate
- **FOR FULL DESCRIPTION SEE PAGES: A-32, A-34, A-56, A-70, A-72, A-91**

Domed Adjustable Concealed Sprinklers

Finish/Part No. 135°F (57°C)

- Chrome: 326046
- White: 326048

Finish/Part No. 155°F (68°C)

- Chrome: 326051
- White: 326053



- **cULus Approved:** *GL2845, GL4245, GL5622, GL5646, GL5649, GL5657, GL8104, GL8145, GL8149* - 135°F (57°C) Sprinkler with 135°F (57°C) plate; 155°F (68°C) Sprinkler with 135°F (57°C) plate; 175° (79°C) Sprinkler with 155°F (68°C) plate; 200°F (93°C) Sprinkler with 155°F (68°C) plate
- **FOR FULL DESCRIPTION SEE PAGES: A-33, A-35, A-37, A-57, A-73**
- **cULus Approved:** *GL2856, GL4256, GL5677, GL5678, GL8173, GL8177* - 135°F (57°C) Sprinkler with 135°F (57°C) plate; 155°F (68°C) Sprinkler with 135°F (57°C) plate; 155°F (68°C) Sprinkler with 155°F (68°C) plate; 175° (79°C) Sprinkler with 155°F (68°C) plate; 200°F (93°C) Sprinkler with 155°F (68°C) plate
- **FOR FULL DESCRIPTION SEE PAGES: A-71, A-92**

E.C. Domed Adjustable Concealed Sprinklers

Finish/Part No. 135°F (57°C)

- Chrome: 329489
- White: 329491

Finish/Part No. 155°F (68°C)

- Chrome: 329495
- White: 329497



- **cULus Approved:** *GL5613, GL8113* - 135°F (57°C) Sprinkler with 135°F (57°C) plate; 155°F (68°C) Sprinkler with 135°F (57°C) plate; 175° (79°C) Sprinkler with 155°F (68°C) plate
- **FOR FULL DESCRIPTION SEE PAGE: A-47**
- **cULus Approved:** *GL8114* - 135°F (57°C) Sprinkler with 135°F (57°C) plate
- **FOR FULL DESCRIPTION SEE PAGE: A-47a**