

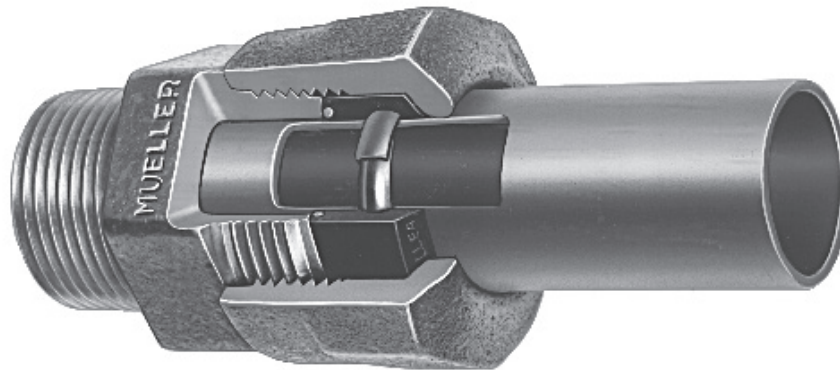
Mueller Co. offers a variety of proven service connections to fit most pipe and tubing used in today's service lines. These connections include the Mueller 110[®] Compression Connection,

Mueller Pack Joint Connection, Mueller INSTA-TITE[®] Connection, Mueller GRIP Connection, copper flare connection and several types of threaded connections.

The Mueller 110 Compression Connection offers high resistance to pull-out, fast installation, and a visual means to check for proper tightness. This connection is available on most Mueller valves and stops in sizes from 3/4" to 2", and for CTS tubing or IPS pipe.

All service brass will comply with AWWA C-800. Components in contact with potable water will also comply with latest requirements of the Federal Safe Drinking Water Act.

Mueller 110[®] Compression Connection Features



- **Nut** - corrosion resistant cast bronze ASTM B62 (85- 5-5-5). Bottoms out on shoulder of coupling to give quick visual indication of proper tightening.
- **Two Designs** - conductive compression connection fits type "K" copper tubing and CTS O.D. PE plastic tubing. A separate design fits IPS PE plastic pipe. Recommended stainless steel liners for plastic tubing and pipe available.
- **Conductor Spring** - provides metal-to-metal contact between copper tubing and fitting for electrical conductivity.
- **Gasket** - compresses concave gripper band and seals against fitting body, pipe and nut. Uniform pressure is applied around the concave gripper, forcing each outer edge to grip the pipe for pull-out resistance .
- **Entire Gasket** - is enclosed to resist cold flow & creep.
- **Amide Wax Coating** - on inside surface of nut reduces tightening effort and avoids gasket
- **Pressure Rating** - The pressure holding capability of the Mueller 110 Compression Connection is designed to be greater than that of the valve or fitting on which it is used (only in potable water distribution applications complying with AWWA standards).
- **Gripper Band** - is stainless steel and overlaps itself so no gasket material can get underneath.

Rev. 5-20 Shaded area indicates changes



H-15391N

Service tee
Mueller 110 Conductive Compression Connection for CTS O.D.* tubing x 110 Conductive Compression Connection for CTS O.D.* tubing x F.I.P. thread

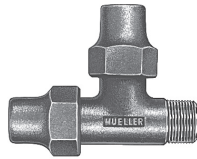
3/4"	1"	1 1/2"x1 1/2"x 3/4"	2"x2"x1"
------	----	---------------------	----------



H-15393N

Service tee
Mueller 110 Conductive Compression Connection for CTS O.D.* tubing x 110 Conductive Compression Connection for CTS O.D.* tubing x Inside CC thread

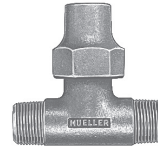
1 1/2"x1 1/2"x 3/4"	2"x2"x3/4"	2"x2"x1"
---------------------	------------	----------



H-15382N

Service tee
Copper flare nut x M.I.P. thread x copper flare nut

3/4" ‡



H-15384N

Service tee
M.I.P. thread x M.I.P. thread x copper flare

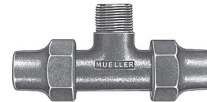
3/4" ‡



H-15380N

Service tee
Copper flare nut - all ends

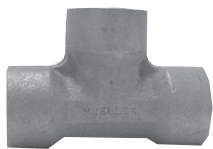
1/2" ‡	3/4"	3/4"x3/4"x1"	1"	1" x 3/4" x 3/4"	1" x 1" x 3/4"	1-1/4" ‡
1-1/4" x 1-1/4" x 3/4" ‡		1-1/4" x 1-1/4" x 1" ‡		1-1/2"	1-1/2" x 1-1/2" x 3/4" ‡	
1-1/2" x 1-1/2" x 1"		2"	2" x 2" x 3/4" ‡		2" x 2" x 1"	



H-15386N

Service tee
Copper flare nut x copper flare nut x M.I.P. thread

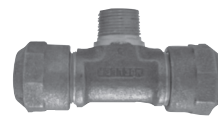
3/4"	3/4"x3/4"x1"	1"
------	--------------	----



H-10097N

Service tee
F.I.P. thread - all ends

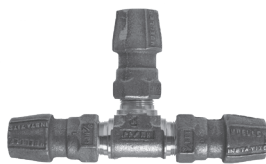
1"



H-15387N

Service tee
Mueller 110 Conductive Compression Connection for CTS O.D.* tubing x 110 Conductive Compression Connection for CTS O.D.* tubing x M.I.P. thread

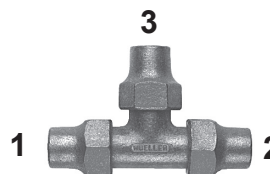
3/4"	3/4"x3/4"x1"	1"
------	--------------	----



H-15399N

Service tee
CTS Insta-Tite - all ends

3/4"	1"
------	----



Service tee sizing - sizes of ends are listed in the order shown above - when all three end sizes are the same, only one size is listed.

‡Requires minimum ordering quantity. Contact MUELLER Customer Service Center for minimum ordering requirements and availability.
* See page 6.29 for tubing that can be used with this connection.

April 28, 2017

Subject: Mueller Co. Service Brass

To Whom It May Concern:

This will certify that Mueller Co. service brass, which includes corporation stops, curb stops, service fittings, meter valves, copper meter yokes and end connections, are manufactured and tested in accordance with the latest revision of AWWA C800 standard and are certified to NSF 61.

Components that come in contact with potable water comply with the latest requirements of the U.S. Federal Safe Drinking Water Act that was enacted on January 4, 2014.

Sincerely,



Larry Aulich
Senior Product Manager
Mueller Company