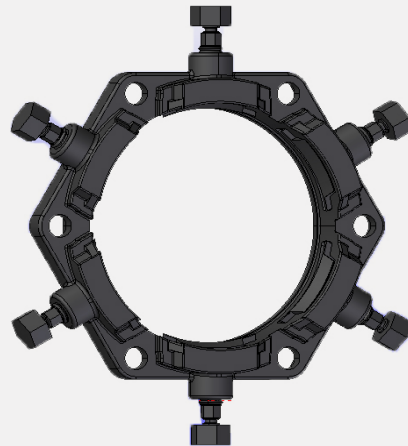
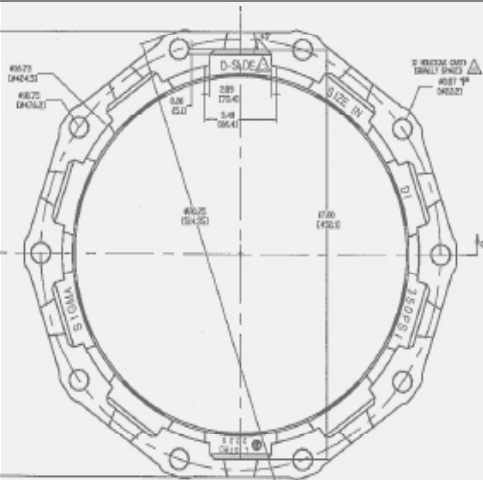


ONE-LOK™ MODEL SERIES D-SLDE DOMESTIC WEDGE RESTRAINT FOR DUCTILE IRON PIPE



PRODUCT SPECIFICATIONS

- MATERIAL:**
- Gland body, wedge inserts and break-off top actuating bolts are manufactured of high strength ductile iron in accordance with ASTM A536, Grade 65-45-12.
 - Wedge inserts are heat-treated to a hardness of 370 BHN minimum.
- SIZE RANGE:**
- 3" through 48"
- DIMENSION:**
- Conform to ANSI/AWWA C111/A21.11, ANSI/AWWA C110/A21.10, ANSI/AWWA C153/A21.53 standards.
- PRESSURE RATINGS:**
- Sizes 3"-16" carry a 350 psi WWP and sizes 18"-48" carry a 250 psi WWP while providing a minimum 2:1 factor of safety.
- COATING:**
- Asphaltic black enamel or Acrylic Black Enamel
 - Electro-deposition "CORRSAFE™" available upon request. For further information, please refer to our CORRSAFE Product Information sheet at <http://www.sigmaco.com/pipe-restraint-product-coatings-linings/> or fusion bonded polyester coating available on request.
- APPROVALS:**
- Underwriters Laboratories" Listed in sizes 3"-36" and Factory Mutual approved in sizes 4"-12".
- DEFLECTION:**
- 5° on 3"-12", 2° on 14"-16", 1.5° on 18"-34" and 1° on 30"-48"
- TRACEABILITY**
- Gland body, sizes 3"-24", is individually cast with exact heat code information Gland body, wedge inserts and break-off top actuating bolts, sizes 30"-48", are individually cast with exact heat code information.
- INSTALLATION:**
- In accordance with manufacturer's recommendation and applicable AWWA standards.

Note: This product is not designed to be used on plain end fittings.