

# PIPE STAY-STANDARD



## Product Features

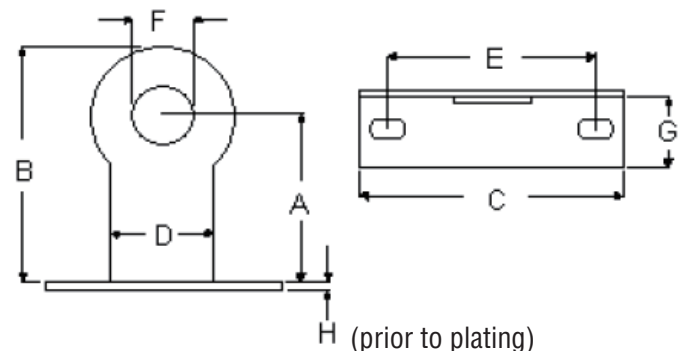
- Material: Carbon steel
- Surface finish: Black epoxy coat
- Vertical or horizontal offset pipe guide
- Size range: 1/2" - 2" copper to 3/8" - 2" iron pipe



STANDARD PIPE STAY

## Product Specifications

Ferguson #	PIPE SIZE	SPECIFICATION DATA								FASTENER OPTIONS	
		A	B	C	D	E	F	G	H	WOOD SCREW	LAG SCREW
PFPST10	1/2 CTS X 3/8 IPS	1 1/8	1 13/16	2 1/2	1	1 3/4	11/16	3/4	16Ga	#10	#10
PFPST11	3/4 CTS X 1/2 IPS	1 3/16	1 7/8	2 1/2	1	1 3/4	29/32	3/4	16Ga	#10	#10
PFPST12	1 CTS X 3/4 IPS	1 1/2	2 7/16	3 1/4	1 1/4	2	1 5/32	3/4	16Ga	#14	1/4"
PFPST13	1-1/4 CTS X 1 IPS	1 1/2	2 9/16	3 1/4	1 1/4	2	1 13/32	3/4	16Ga	#16	1/4"
PFPST14	1-1/2 CTS X 1-1/4 IPS	2 1/2	3 5/8	4	1 3/4	3	1 23/32	15/16	14Ga	#16	1/4"
PFPST15	1-1/2 IPS	2 5/8	4 3/16	4 1/2	2 3/16	3 1/4	1 31/32	1 1/16	14Ga	#16	1/4"
PFPST16	2 IPS	2 11/16	4 3/16	4 1/2	2 3/16	3 1/4	2 7/16	1 1/16	14Ga	#16	1/4"
PFPST17	2 CTS	2 11/16	4 3/16	4 1/2	2 3/16	3 1/4	2 3/16	1 1/16	14Ga	#16	1/4"



## Warranty and Codes

This PROFLO product carries a 1-year limited warranty.