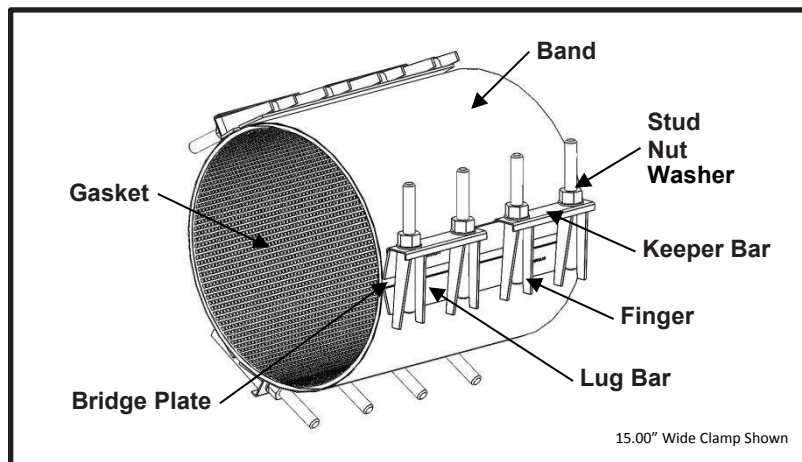


SPECIFICATION

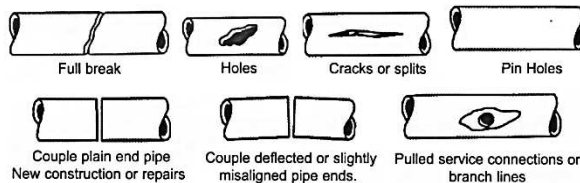
FULL CIRCLE[®] REPAIR CLAMP ALL STAINLESS MODEL 263



APPLICATIONS

Typical Uses

- Repair leaks due to complete breaks, splits or holes
- Joining pipes of the same diameter
- Examples:



Standard Pipe Size

- Range of 11.04" to 26.90"

Standard Widths

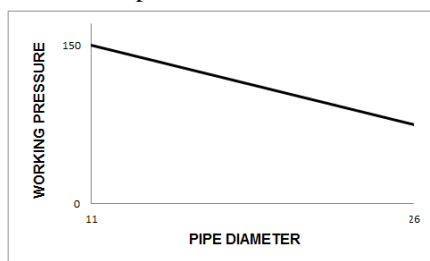
- 10.0", 15.0", 20.0", 30.0"

Type of Pipe

- Carbon Steel, Stainless Steel, Ductile Iron, PVC, HDPE DR17 or thicker (with use of spring washers), Asbestos Cement, Copper, Aluminum

Working Pressure

- Up to 150 psi depending on type of pipe, type of repair, pipe diameter, service conditions, and installation workmanship





SPECIFICATION

FULL CIRCLE[®] REPAIR CLAMP ALL STAINLESS

MODEL 263

MATERIALS

- **Band**
 - Type 304 Stainless Steel per ASTM A240
 - Band Thickness: 19 gauge
- **Finger**
 - Type 304 Stainless Steel per ASTM A240
 - Finger Thickness: 10 gauge
 - Solution annealed for increased corrosion resistance and strength
 - Long fingers allow for greater range in clamp to help reduce inventory
- **Lug Bar**
 - Type 304 Stainless Steel per ASTM A240
 - Lug Bar Thickness: 10 gauge
 - Solution annealed for increased corrosion resistance and strength
 - Spans entire width of clamp for uniform distribution of clamping force
- **Keeper Bar**
 - Type 304 Stainless Steel per ASTM A240
 - Keeper Bar Thickness: 14 gauge
 - Solution annealed for increased corrosion resistance and strength
 - Helps pull clamp around the pipe and closes the clamp during installation
- **Gasket**
 - Nitrile (Buna-N) per ASTM D2000
 - Gasket Thickness: 0.192" thickness for clamps 14.84" diameter and smaller
0.250" thickness for clamps 14.85" diameter and larger
 - Certified to NSF/ANSI 61-G & 372
 - Compounded to resist water, oil, natural gas, acids, alkalies, most (aliphatic) hydrocarbon fluids, and many other chemicals
 - Temperature range: -20°F to +180°F
 - Full 360° gridded face gasket provides maximum pipe support, reinforcement, and sealing pressure
 - Tapered ends allow for full circumferential sealing
- **Bridge Plate**
 - Type 304 Stainless Steel Quarter Hard per ASTM A240
 - Molded and recessed into gasket
 - Preformed for uniform distribution of gasket pressure over the entire pipe circumference
- **Stud**
 - Type 304 Stainless Steel per ASTM A276
 - Epoxy coated threads to prevent galling
 - 5/8"-11UNC x 7.00" long, Stud
 - Rolled threads for improved physical characteristics, greater thread accuracy, and smooth surface finish
- **Nut**
 - Type 304 Stainless Steel GR. 8 per ASTM A194
 - Fluoropolymer coated to prevent galling
 - 5/8"-11UNC, Heavy Hex Semi-Finished
- **Washer**
 - Type 304 Stainless Steel per ASTM A240
 - 5/8" Type A Plain



SPECIFICATION

FULL CIRCLE[®] REPAIR CLAMP ALL STAINLESS

MODEL 263

- **Welding**
 - Welds accomplished using qualified welders
 - GMAW & GTAW weld process utilized
 - Welds passivated to preserve corrosion resistance

LISTINGS

- Certified to NSF/ANSI 61-G & 372
- Meets applicable AWWA C230 standards

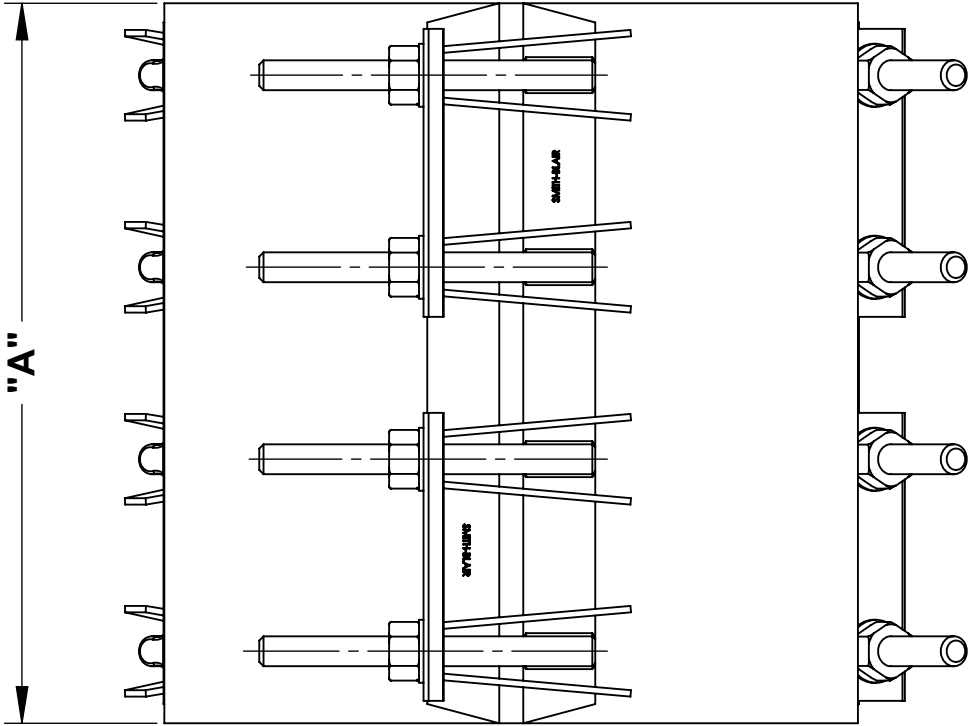
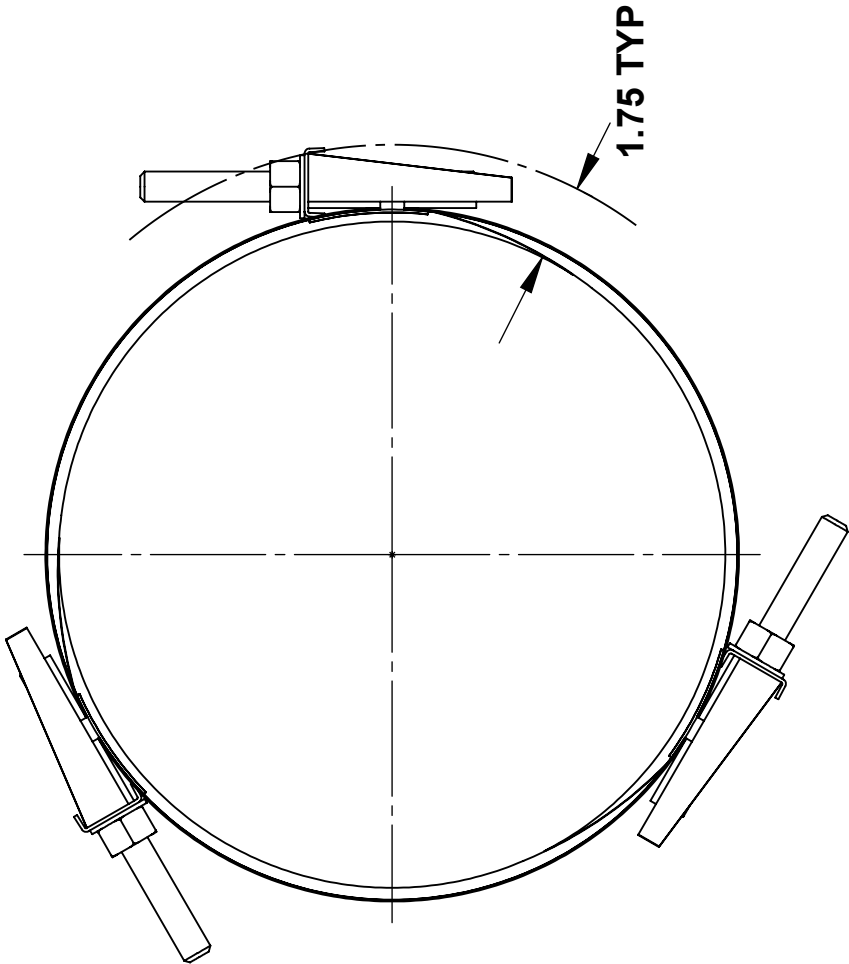
OPTIONS

- Type 316 Stainless Steel band
- Type 316 Stainless Steel hardware with fluoropolymer coated nuts to prevent galling
- Alternative gasket material (e.g. Viton, EPDM, etc.)
- Spring washers for use of clamp on HDPE pipe
- Offset gaskets to allow for repairing longer cracks using multiple clamps
- Conductivity conductor feature

NOTES

- This product **does not** restrain the pipe from pulling out of the fitting
- Spring washers **are required** when this product is used on DR17 or thicker HDPE pipe
- Pipe stiffeners **are required** when this product is used to join HDPE and thin wall PVC pipe
- Full Circle[®] is a registered trademark of Smith-Blair Inc.
- These product specifications were correct at the time of publication and are subject to change without notice
- See the Smith-Blair[®] web site for part numbers and ordering information
- See the Smith-Blair[®] web site for warranty information
- See the Smith-Blair[®] web site for corrosion warnings

30 Globe Ave, Texarkana, AR 71854
Ph: 870-773-5127 • Fax: 870-773-5212
Toll-Free Numbers: Ph: 800-643-9705 • Fax: 800-648-6792



NOTES:
1. 15.00" WIDE CLAMP SHOWN OTHER SIZES SIMILAR

A	KEEPER BAR		HARDWARE			SOCKET SIZE
	QUANTITY	SIZE	QUANTITY	STUD SIZE	WASHER SIZE	
10.00	3	8.00	9	5/8" x 7.00"	5/8"	1-1/16"
15.00	6	6.00	12			
20.00	6	3X-6.00 3X-10.00	15			
30.00	6	6X-14.00	30			

CERTIFIED TO NSF/ANSI 61-G & 372

TOLERANCES U.N.O. XX= +.03 XXX= +.015 FRACTIONS= ANGLES=+1° MACH. FIN=	NOTES: REMOVE BURRS AND SHARP EDGES DO NOT SCALE DWG.	APP'D	DATE
		CK'D	DATE
	SCALE: N/A	DRN	DATE
ALL DIMENSIONS ARE IN INCHES.		CHD	2/19/16
TITLE SPECIFICATION FULL CIRCLE® REPAIR CLAMP ALL STAINLESS MODEL 263			
SMITH-BLAIR, Inc. TEXARKANA, ARKANSAS		P/N	N/A
SPEC_263.DRW		1 OF 1 SHEET	2/19/16 REV.