

BUTTERFLY VALVE ADAPTOR

ADAPTOR


OUR BUTTERFLY VALVE ADAPTOR WAS DESIGNED WITH A SPECIAL NOTCH AND BOTTOM LOOP TO ENSURE A PROPER FIT AROUND THE ACTUATOR. MANUFACTURED USING A POWDER-COATED ¼" COLD-ROLLED STEEL FRAME, THIS ADAPTOR IS COST-EFFECTIVE AND BUILT TO LAST. IT WORKS WITH ALL TYPES AND SIZES OF BUTTERFLY VALVES, 6" TO 36", USING A 6850 OR 6855 VALVE BOX OR THE EQUIVALENT.

Advantages

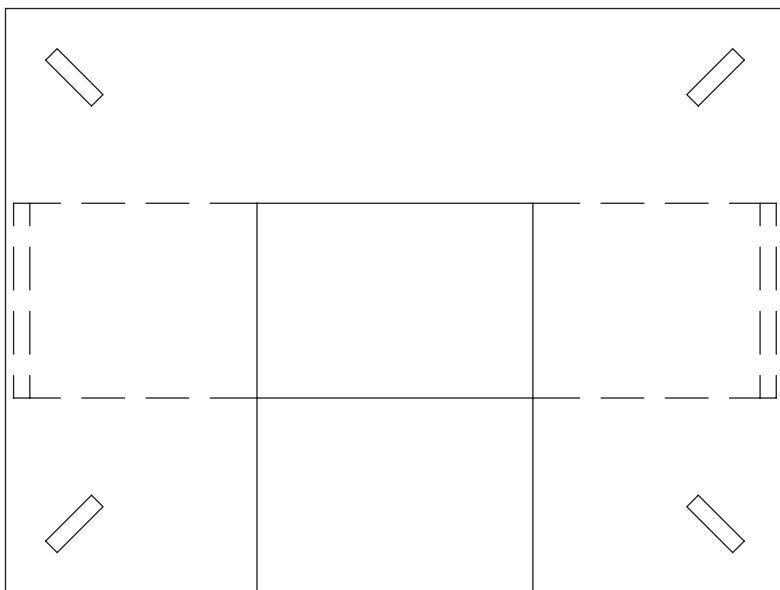
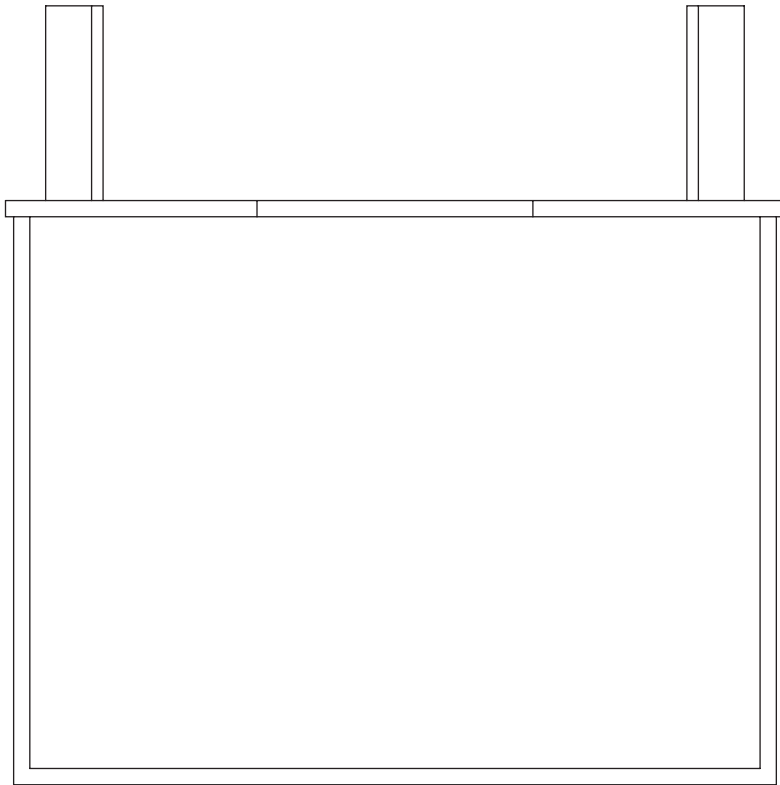
- Special notch and loop for proper fit
- Cost-effective and built to last
- Centers valve box over operation nut
- Allows for proper keying of valve



CALL OR VISIT OUR WEBSITE TO LEARN MORE

2151 South 54th Street, West Allis, WI 53219 • office 414.764.6733 • fax 414.764.1494 • adaptorinc.com •  American Made

BUTTERFLY VALVE ADAPTOR



Installation Guidelines

All valve boxes shall be installed on the valve with the use of a Butterfly Valve Adaptor as manufactured by Adaptor Inc. or an approved equal. A hardwood block or a brick shall be installed under the Adaptor. Gate Valve Adaptor shall be $\frac{1}{4}$ " steel with a UV Polyurethane protective coating.



*** For proper sizing, please visit our website.**

***Fits all valve types: Mueller/ Pratt, M&H, Valmatic, Dezurik, K-Flo/Crispin and Golden Anderson**