



Light Duty Commercial Electric Water Heaters

Point-of-Use, Tall & Short models – 6 to 120 Gallons

Available in point-of-use, tall and short models, Lochinvar's commercial electric water heaters offer a wide range of capacities and a choice of voltages. This flexibility—combined with their Energy Saver design and durable construction—makes them ideal for many low-draw commercial and industrial applications.

Standard Features

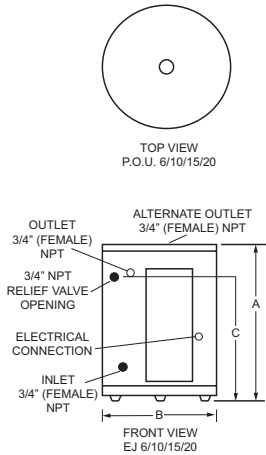
- **Non-Simultaneous or Simultaneous Wiring** - Wired for non-simultaneous operation standard. Field adjustable to simultaneous operation.
- **Glass-Lined Steel Tank** - The durable glass lining is fused to the tank at 1600°F to assure lasting protection against rust and corrosion while providing clean, clear hot water. 300 psi test pressure provides 150 psi working pressure.
- **Non-CFC Foam Insulation** - Superior material formulation provides uniform tank coverage with a thick blanket of insulating foam. This non-CFC polyurethane closed cell foam minimizes standby losses and maximizes heat retention.
- **Adjustable Thermostats** - This accurate control provides an easy way to reset water temperature for best economy.
- **Automatic Overheat Protection** - Provides automatic overheat safety control with manual reset high limit feature.
- **Tank Saver Anode** - A large diameter, high capacity anode inhibits corrosion of the tank interior for long, trouble-free service.
- **Single or Three Phase Wiring** - Wired for 3-phase operation standard. Field adjustable to 1-phase.
- **ASME Temperature & Pressure Relief Valve** - Factory installed.
- **3- Year Limited Tank Warranty, 1-Year Limited Parts Warranty** – See warranty for details.



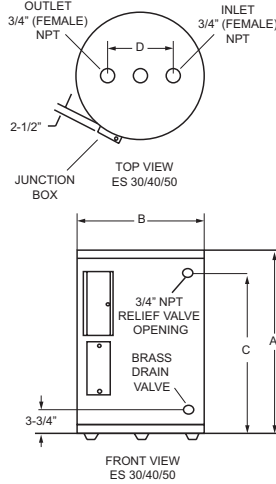
Meets ASHRAE Energy Efficiency Standards

Dimensions & Specifications

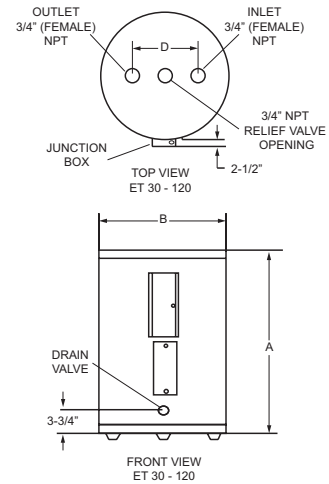
Point-of-Use models



Short models



Tall models



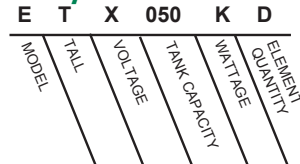
Light Duty Commercial Models

Model	Gallon Number	Capacity	A	B	C	D	Shipping Weight
Point-of-Use Models							
EJW006FS	6	15-1/2"	14-1/4"	11"	-	-	35
EJW010FS	10	18-1/4"	18"	12-1/2"	-	-	54
EJW015FS	15	26"	18"	20-1/2"	-	-	58
EJW020FS	20	22-1/4"	21-3/4"	15-1/2"	-	-	73
Short Models							
ESX030KD	30	31"	21-3/4"	24-1/4"	8"	-	109
ESX040KD	40	32-1/4"	24"	25-1/2"	8"	-	138
ESX050KD	50	32-1/4"	26-1/2"	25-1/4"	8"	-	184
Tall Models							
ETX030KD	30	34-1/2"	20-1/2"	-	8"	-	105
ETX040KD	40	45-1/4"	20-1/2"	-	8"	-	122
ETX050KD	50	55"	20-1/2"	-	8"	-	140
ETX065KD	66	60-3/4"	21-3/4"	-	8"	-	166
ETX080KD	80	59-1/2"	24"	-	8"	-	200
ETX120KD	119	62-1/2"	29-1/2"	-	8"	-	337

Voltage Schedule (EJ Models)	
C	120V 1 PH
J	208V 1 PH
A	240V 1 PH
W	277V 1 PH
V	480V 1 PH
(ES & ET Models)	
T	208V 3 PH
P	240V 3 PH
W	277V 1 PH
X	480V 3 PH

Wattage Limits w/ Simultaneous Operation	
208V	10,000W (5,000W/5,000W)
240V	11,000W (5,500W/5,500W)
277V	12,000W (6,000W/6,000W)
480V	12,000W (6,000W/6,000W)

For Ease in Ordering by Model Number



This is a Tall Commercial Electric 480 volt model with a tank capacity of 50 gallons. The upper and lower elements are 4500 watts.

Notes: Water connections 3/4" NPT on all models. P.O.U. models available in single phase only. 6 gallon P.O.U. not available above 2500 watts or in 480 V. Non-simultaneous circuit only. Short & Tall models are factory wired for three phase service and are field converted to single phase.

Element Availability Schedule	Wattage				
	120V	208V	240V	277V	480V
C-1500	Yes	Yes	Yes	Yes	N/A
D-1650	N/A	N/A	N/A	N/A	N/A
E-2000	Yes	Yes	Yes	Yes	N/A
F-2500	Yes	Yes	Yes	Yes	Yes
G-3000	Yes	Yes	Yes	Yes	Yes
H-3500	N/A	Yes	Yes	N/A	N/A
J-4000	N/A	Yes	Yes	Yes	Yes
K-4500	N/A	Yes	Yes	Yes	Yes
M-5000	N/A	Yes*	Yes*	N/A	Yes*
N-5500	N/A	N/A	Yes*	N/A	N/A
P-6000	N/A	Yes	Yes	Yes	Yes

Notes: Max Wattage for EJ-006 is 3000W
* Indicates Not Available for EJ-010 and EJ-015

Recovery Rate (GPH @ °F)	Recovery Rate (GPH @ °F)			
	40°F	70°F	100°F	130°F
16	9	6	5	
17	10	7	5	
21	12	8	6	
26	15	10	8	
31	18	12	10	
36	21	14	11	
41	24	17	13	
47	27	19	14	
52	30	21	16	
57	32	23	17	
62	35	25	19	



Lochinvar, LLC
300 Maddox Simpson Parkway
Lebanon, Tennessee 37090
P: 615.889.8900 / F: 615.547.1000
Lochinvar.com

