

# BrassCraft®

## Push Connect Technology

Connect with Confidence.  
Fast. Reliable. Durable.



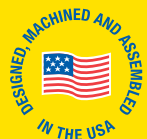
✓ No Lead



**Enhanced Technology –  
Prepped and Ready for  
Easy Installation**

As a leading manufacturer of premium quality plumbing supplies for almost 70 years, Brasscraft Manufacturing Company knows what plumbers want when their reputation is on the line—products that are fast, reliable and durable. And that's exactly what our push connect technology delivers.

Available in two watertight options, our push connect water stops are designed, machined and assembled in the USA, and are offered in both straight and angle configurations. Additional features and benefits of our push connect technology include:



**No Lead**

- No installation tools – doesn't require soldering or glue
- Installation ready – pre-inserted tube stiffener that will self-align with the tubing
- Smooth, quarter-turn operation
- Compatible with copper, PEX and CPVC
- 100% leak tested



## Push Connect Water Stop

Brasscraft Manufacturing Company's compact machined one-piece body configuration provides a slimmer design for tighter installation areas. This stop can be removed using our PCT-10-6 removal tool, packaged separately.



Item ID	Item Description	List Price	Qty	Lbs	UPC
G2PS09X C	1/2" Nom Push Connect x 1/4" OD Comp - Angle Stop	\$ 32.93	60	18	026613142180
G2PS19X C	1/2" Nom Push Connect x 3/8" OD Comp - Angle Stop	\$ 24.41	60	18	026613142128
G2PS14X C	1/2" Nom Push Connect x 3/8" OD Comp - Straight Stop	\$ 25.85	60	18	026613142142

## Push Connect x Push Connect Water Stop

This convenient water stop features push connect technology not only on the inlet side of the stop, but also on the outlet side which allows for ease of installation. This stop can be removed using our PCT-10-6 removal tool, packaged separately.



Item ID	Item Description	List Price	Qty	Lbs	UPC
G2QPS14X C	1/2" Nom Push Connect x 3/8" OD Push Connect - Straight Stop	\$ 25.85	60	18	026613145198
G2QPS19X C	1/2" Nom Push Connect x 3/8" OD Push Connect - Angle Stop	\$ 24.41	60	18	026613145204



Item ID	Item Description	List Price	Qty	Lbs	UPC
PCT-10-6	1/2" and 1/4" Combination Removal Tool	\$ 1.39	10		026613142197



# BrassCraft®



**Brasscraft Manufacturing Co.**  
 39600 Orchard Hill Place  
 Novi, Michigan 48375-5331  
 TOLL-FREE: (877) 272-7755  
 FAX: (248) 305-6011

350 South Edgeware Road  
 St. Thomas, Ontario Canada N4P 4C4  
 TOLL-FREE: (800) 265-4322  
 FAX: (800) 567-9100


## For Residential and Commercial Applications

Job Name		Engineer / Architect	
Job Location		Wholesaler	
Submittal Date		Contractor	

## G2QPS14X 1/4 Turn Push Connect Straight Stop - Push Connect Outlet

**Use:** For use with water in accessible locations only. Not intended for recirculating systems that produce continuous use temperatures above 115° F. For those applications, use our KT™ series ball stop.

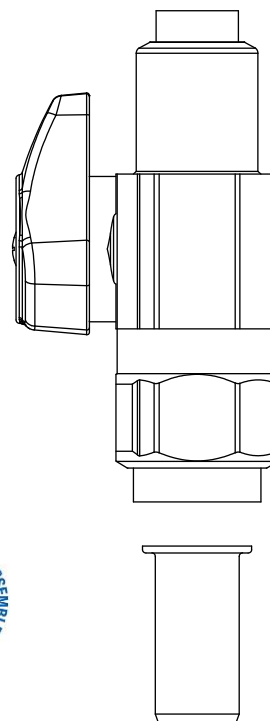
### Design Features:

- **Compatible with** PEX, copper, and CPVC
- **Pre-inserted tube stiffener** is “installation ready” for a faster connection
- **Compact machined one-piece** brass body design
- **Fast, reliable, and secure** connection
- **Push Connect X Push Connect** inlet and outlet
- **Smooth 1/4 turn** operation
- **Easy-to-remove handle** helps protect against accidental stop operation during rough-ins
- **100%** Leak tested
-  **No Lead**

### Operating Specifications:

**Temperature:** 40° - 140° F

**Pressure:** 125 PSI maximum



### STOP MATERIAL SPECIFICATIONS

<b>Body</b>	No-Lead brass, chrome plated
<b>Handle</b>	Zinc, die cast plated
<b>Handle Screw</b>	Zinc-plated steel
<b>O-ring</b>	Rubber
<b>Stem Shaft</b>	Polypropylene
<b>Stem Barrel</b>	TPE
<b>Removal Flange</b>	Polypropylene
<b>Tube Support</b>	POM
<b>Gripper Ring</b>	Stainless steel

This specification and all information contained herein is the confidential and exclusive property of BrassCraft Manufacturing, and shall not be disclosed to others without the written consent of BrassCraft Mfg. This specification must be returned to BrassCraft Mfg if requested.

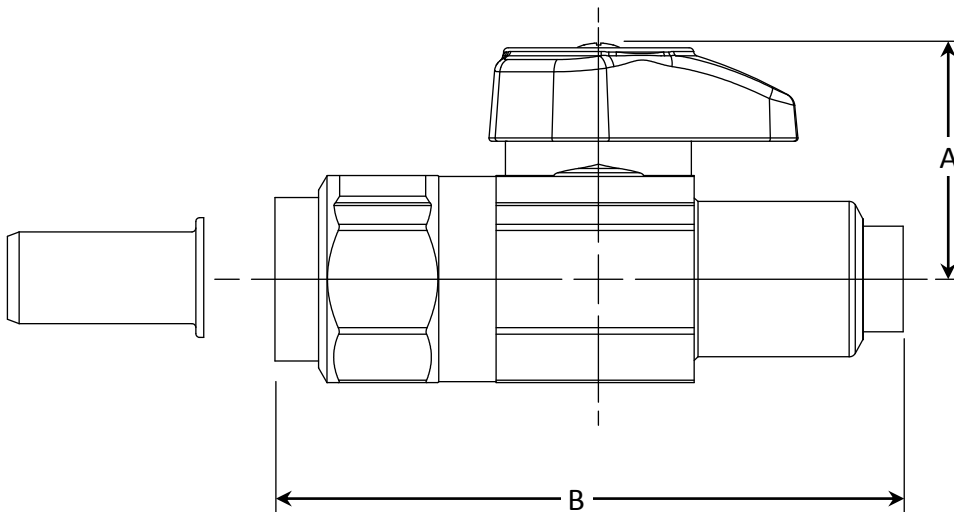
**BrassCraft®**

# G2QPS14X 1/4 Turn Push Connect Straight Stop - Push Connect Outlet

**No-Lead Part Listing:**

☐ G2QPS14X C 1/2" nom push connect x 3/8" OD push connect, chrome plated

PART DIMENSIONS (Inches)		
Model	DIM. A	DIM. B
G2QPS14X	1.03	2.74



**Listings & Certifications:**

- IAPMO listed to ASME A112.18.1 / CSA B125.1 and ASSE 1061 (File # 0645)
- CSA listed to ASME A112.18.1 / CSA B125.1 and ASSE 1061 (File # 204593)
- No-Lead product CSA listed to Low Lead Content Certification Program – Plumbing Products Class 6853-01



*This specification and all information contained herein is the confidential and exclusive property of BrassCraft Manufacturing, and shall not be disclosed to others without the written consent of BrassCraft Mfg. This specification must be returned to BrassCraft Mfg if requested.*

**BrassCraft®**