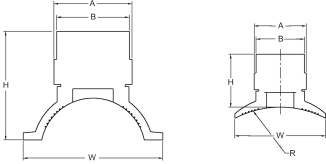


ELECTROFUSION FITTINGS: TRANSITION SADDLE
PE3408/PE4710, Top Load Clamp (H)
Outlet Size: 2"

- Pin Type: 4.7S (4.7 Solid Pin)
- Approval: ASTM F1055
- Approval: AWWA C906
- Approval: NSF-61
- *Approval: ANSI B1.20.1

Outlet Material: Brass 360 Alloy Compression Ring Material: Stainless 304

Please call for more information on availability, pricing, other sizes and dimensions. The products listed are standard stocking options. However, GF Central Plastics offers thousands of different configurations as well as custom innovative structures.



	Main Size (inch)	GFCP Part No.	GF weight Part No.	(lb)	R (inch)	A (inch)	H (inch)	W (inch)	B (inch)	Box Qty
*	8 DIPS; 2 FPT	10004656	360 001 207	4.277	4.53	3.50	2.50	6.10	3.25	5
	8 DIPS; 2 CORP	10004729	360 001 206	3.858	4.53	3.50	2.50	6.10	3.25	5
	10 DIPS; 2 CORP	10004645	360 001 108	4.145	5.55	3.50	2.50	6.10	3.25	5
	10 IPS; 2 CORP	10004651	360 001 118	3.836	5.38	3.50	2.50	6.10	3.25	5
*	10 IPS; 2 FPT	10004653	360 001 119	4.431	5.38	3.50	2.50	6.10	3.25	5
	10 DIPS; 2 FPT	10009837	360 001 109	4.431	5.55	3.50	2.50	6.10	3.25	5
	12 IPS; 2 CORP	10004664	360 001 133	3.990	6.38	3.50	2.50	6.10	3.25	5
*	12 IPS; 2 FPT	10004665	360 001 134	2.227	6.38	3.50	2.50	6.10	3.25	5
*	12 DIPS; 2 FPT	10004727	360 001 127	2.271	6.60	3.50	2.50	6.10	3.25	5
	12 DIPS; 2 CORP	10004728	360 001 126	3.880	6.60	3.50	2.50	6.10	3.25	5
*	16 DIPS; 2 FPT	10014111	360 029 073	3.880	8.70	3.50	2.50	6.10	3.25	5