

Model
SS-3804
ADA Wall Mount Lavatory

DESCRIPTION

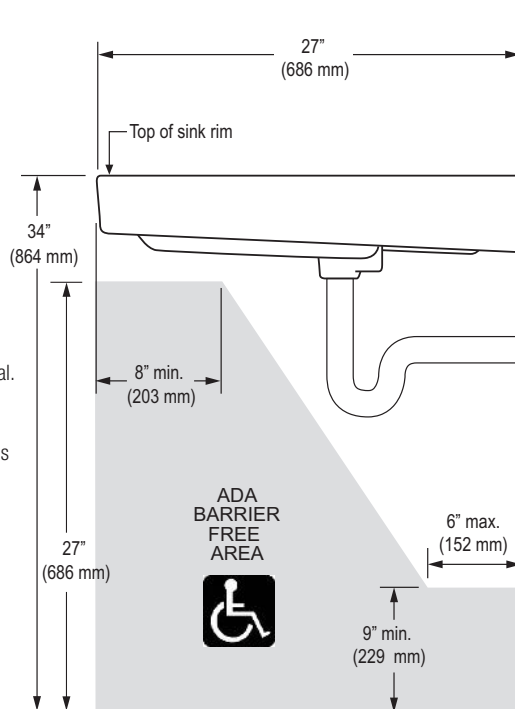
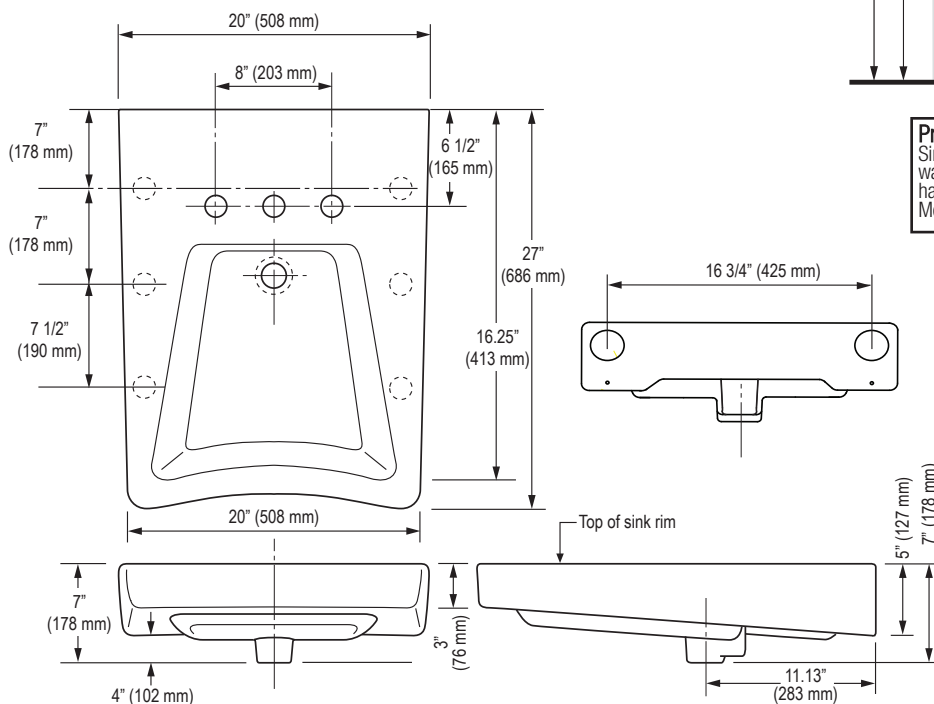
Complete ADA wall mount vitreous china lavatory.
Model SS-3804



SPECIFICATIONS

Lavatory

- White vitreous china
- Wall mount
- Hole drillings on 8" (203 mm) center
- Overflow
- ADA compliant when mounted with deck at 34" from finished floor. See illustration for recommended ADA installation
- 20" (508 mm) x 27" (686 mm)
- Carrier not included
- Compatible with:
Jay R. Smith-0700-27-M31 series lavatory carrier or equal.
Josam-17100-67 series lavatory carrier or equal.
Watts TCA-411-WC concealed arm 27 x 20 "track" carrier or equal.
Watts WCA-411 WC carrier with concealed arms or equal



Product Specification

Sink shall be made of vitreous china. Sink shall be wall mounted. Sink shall have an overflow. Sink shall have hole drillings on 8" center. Sink shall be Sloan Model SS-3804.



Listed by I.A.P.M.O.

Important: Fixture dimensions are nominal and may vary slightly from drawings.

This space for Architect/Engineer approval

Job Name	Date
Model Specified	Quantity
Variations Specified	
Customer/Wholesaler	
Contractor	
Architect	

SLOAN®

Sloan Valve Company
10500 Seymour Avenue,
Franklin Park, IL 60131
Phone: 1-800-9-VALVE-9 (982-5839)
or 1-847-671-4300
Fax: 1-800-447-8329 or 1-847-671-4380
www.sloanvalve.com

Copyright © 2010 Sloan Valve Company
04/10 Rev. 0b