



**1101 McKinley Street  
Anoka, MN 55303  
Phone (763) 786-6682  
Fax (763) 786-2167**

## **Design**

The POLY-CAM Steel Pulling heads are a single eye construction rated to the safe pulling strength of the pipe installed. The design of the Pulling Heads allow them to be fully pressure rated and sealed not to allow drilling fluids and other contaminants. In addition Poly-Cam offers a female threaded port for ease of pressing the line after the pull.

The POLY-CAM Threaded Transition Adaptors is a multi-level mechanical transition fitting, protected under patent number 5,211,429, which is hydraulically compressed unto the polyethylene or pipe quality copolymer material.

For Further information please contract your Poly-cam Distributor or Representative.

## **Features**

Size range from 1"- 30" diameter  
DIPS and IPS Sizes  
Optional female threaded port for testing (up charge)  
Round Nose design for easy of pulling  
Strong Steel construction for longevity  
Pressure sealed design

## **System Performance**

The transition fitting is designed to handle full pressure with a 2:1 safety factor at 73.40 degrees Fahrenheit with a minimum 50 year design life.

## **Quality Assurance**

The transition fitting shall be manufactured by Poly-Cam, Inc. Poly-Cam, Inc. shall provide quality assurance with regards to proper installation, compatibility, performance, and acceptance. Transition joint meets or exceeds the requirements of ASTM D2513 Category 1.

## **Installation**

### **HDPE pipe end**

Install transition fitting so as to comply with the pipe manufacturer's recommended procedures. All field welds shall be accomplished in accordance with Plastic Pipe Institute's welding procedure for butt fusion.

## **Material**

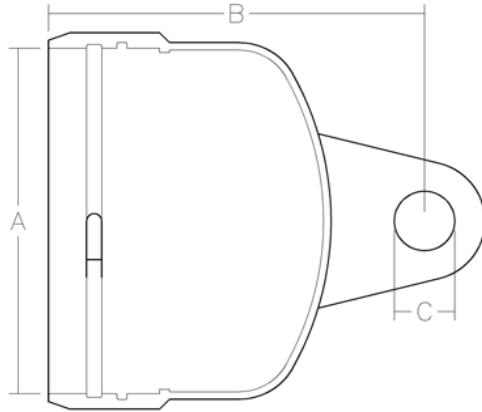
The POLY-CAM Threaded Transition is manufactured of A53B grade Carbon Steel and incorporated with the transition manufactured of HDPE (cell class 345454c) or pipe quality Copolymer material. All certification will be submitted upon request.



The Ultimate Joining System

## Series 653F

### The POLY-CAM Female Yelomine® Pulling Head



Nominal Size Inches	POLY-CAM Pulling Head Material	Pulling Head Diameter <i>A</i>	Pulling Head Length <i>B</i>	Eye Bolt Length <i>C</i>	Eye Bolt Size Inches	Safe Work-Load (lbs)
2	Carbon Steel	2.375	4.0	2.25	0.438	1800
3	Carbon Steel	3.500	6.0	3.00	0.625	4000
4	Carbon Steel	4.500	7.0	3.50	0.875	7000
5	Carbon Steel	5.563	8.5	4.75	1.125	9000
6	Carbon Steel	6.625	10.0	5.00	1.250	15000
8	Carbon Steel	8.625	11.0	7.00	1.750	28000
10	Carbon Steel	10.75	13.0	8.00	2.000	38000
12	Carbon Steel	12.75	15.0	9.00	2.500	56000

Heavy Duty Construction  
ASTM 489, ANSI/ASME B18.15

Poly-Cam, Inc. - 1101 McKinley Street - Anoka, MN 55303 888/355 5574 -  
Fax 763/786 2167 - [www.poly-cam.com](http://www.poly-cam.com)