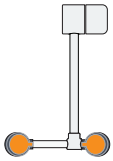
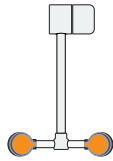




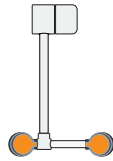
### **G1849** Eyewash, Deck Mounted, AutoFlow™ 90° Swing-Down



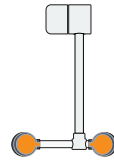
**G1849LH-L**



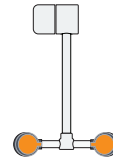
**G1849LH**



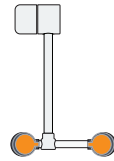
**G1849LH-R**



**G1849L**



**G1849**



**G1849R**



**Application:** AutoFlow™ eyewash for mounting on counter. Spray heads swing down from storage to operational position, activating water flow. Available in a variety of spray head configurations to minimize obstructions at a sink. *Note: If unit is not installed at a sink, floor drain should be provided underneath unit to prevent accumulation of water on floor.*

**Spray Head Assembly:** Two GS-Plus™ spray heads. Each head has a “flip top” dust cover, internal flow control and filter to remove impurities from the water flow.

**Valve:** 1/2" IPS plug-type valve with Teflon® coated O-ring seals. Swinging head assembly down from storage to operational position opens orifice and activates water flow. Unit remains in operation until spray head assembly is returned to storage position.

**Strainer:** Unit is furnished with in-line strainer to protect valve and spray heads from debris in water line.

**Mounting:** Valve is installed in Type 316 stainless steel housing. Unit mounts on countertop behind sink. Furnished with mounting hardware for securing unit to counter.

**Construction:** Polished chrome plated brass.

**Supply:** 1/2" NPT male inlet.

**Sign:** ANSI-compliant identification sign.

**Quality Assurance:** Unit is completely assembled and water tested prior to shipment.

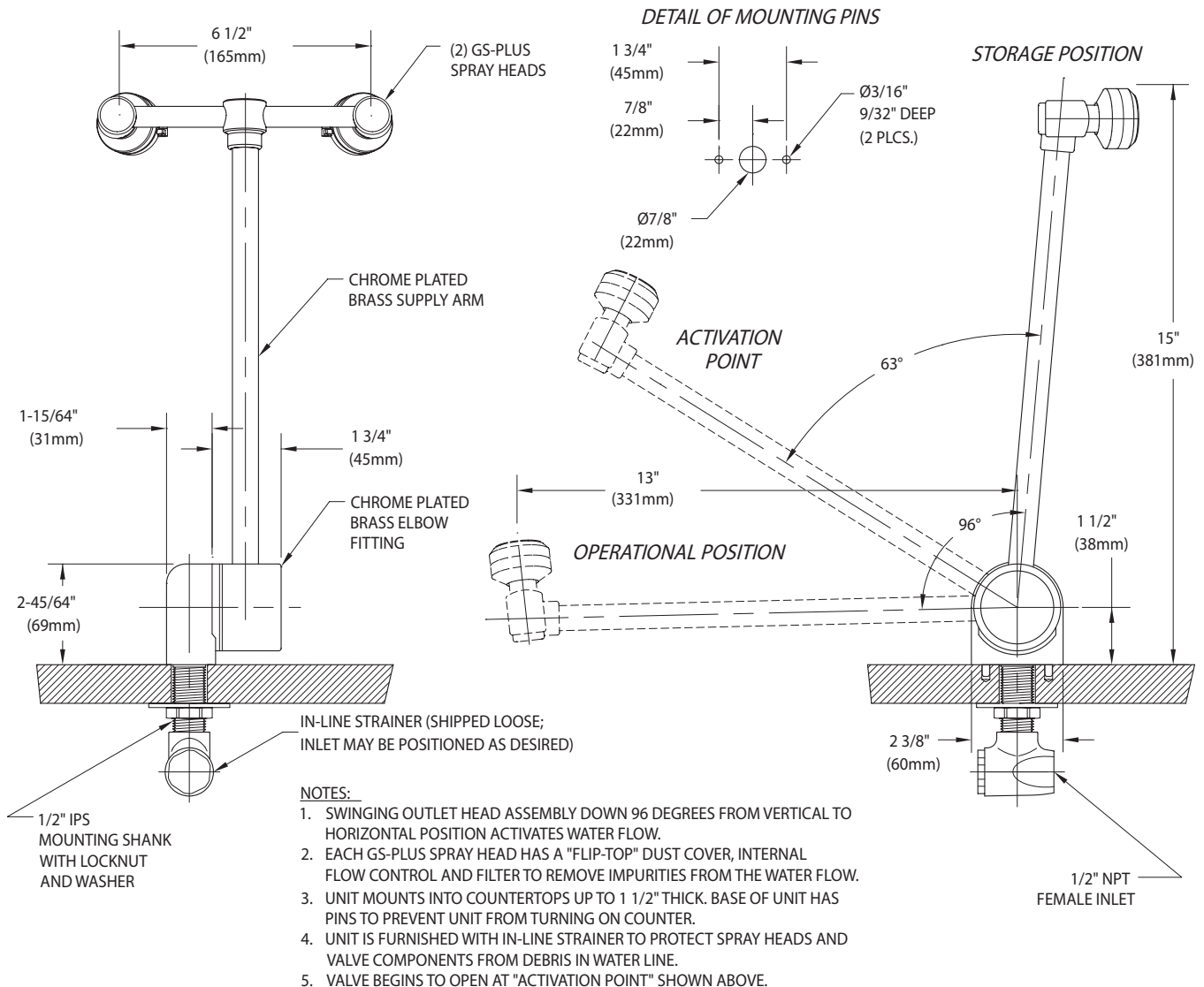
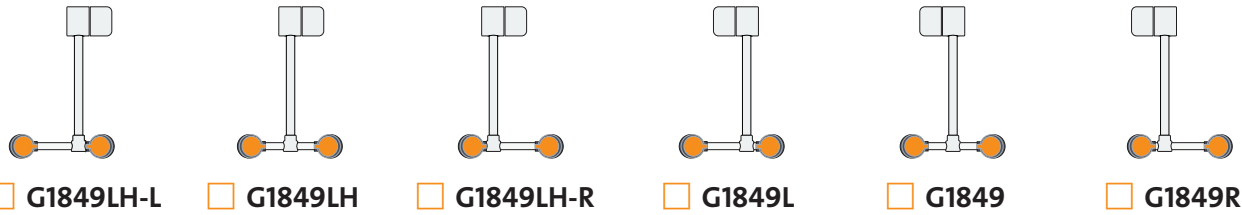
### Available Options

**TMV** G3600LF thermostatic mixing valve precisely blends hot and cold water to deliver warm (tepid) water as required by ANSI Z358.1-2014. Refer to “Tempering Units” section for complete technical and product selection information.





### □ G1849 Eyewash, Deck Mounted, AutoFlow™ 90° Swing-Down



THIS SPACE FOR ARCHITECT/ENGINEER APPROVAL

Due to continuing product improvement, the information contained in this document is subject to change without notice. All dimensions are ± 1/4" (6mm). rev. 0115

Sign Included



Guardian Equipment 312 447 8100 TELEPHONE  
1140 N North Branch St 312 447 8101 FACSIMILE  
Chicago, IL 60642 gesafety.com

Listed 8116. Units have been tested to and comply with ANSI Z358.1-2014 and the Uniform Plumbing Code.



ETL Listed 101496. Units have been tested to and comply with ANSI Z358.1-2014.

