



Buy it for looks. Buy it for life.®

There is more than 1 version of this model.

Page down to identify the version you have.

FAUCET DESCRIPTION

- Versatile, hands-free convenience in the kitchen
- Allows users to control the faucet in 3 unique ways: Wave Sensor, Ready Sensor and familiar handle
- Powered by 6 AA batteries or optional AC power adapter
- Reflex™ pulldown system offers smooth operation, easy movement and secure docking
- Metal construction with various finishes identified by suffix
- Hydrolock® quick connect installation
- Pulldown spray with 68" braided hose
- Valve flexible supply lines with 3/8" compression fittings
- Spout uses push-fit hose connections
- High arc spout provides height and reach to fill or clean large pots while pull down wand provides the maneuverability for cleaning or rinsing
- Includes liquid soap dispenser

OPERATION

- Lever style handle
- Temperature controlled by 100° arc of handle travel
- Operates with less than 5 lbs. of force
- Operates in stream or spray mode in the pulldown or retracted position
- Spout rotates 100 degrees
- When filling a vessel outside the sink, the pause feature conveniently stops the flow of water as the wand passes over the counter top


FLOW

- Flow is limited to 1.5 gpm (5.7 L/min) at 60 psi

CARTRIDGE

- 1255™ Duralast™ cartridge for Single-Handle Faucets

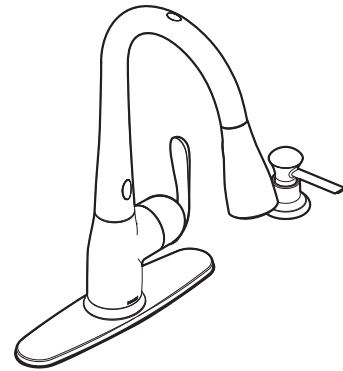
STANDARDS

- Third party certified to ASME A112.18.1/CSA B125.1 and all applicable requirements referenced therein including NSF 61/9
- Meets Georgia SB370 requirements
- Complies with California Proposition 65 and with the Federal Safe Drinking Water Act
- The backflow protection system in the device consists of two independently operating check valves, a primary and a secondary which prevent backflow
- **ADA**  for lever handle

WARRANTY

- Limited lifetime warranty against leaks, drips, finish defects to the original consumer purchaser
- 5 year warranty electronic operation defects to the original consumer purchaser
- 5 year warranty against leaks, drips, finish defects if used in commercial installations
- 1 year warranty against electronic operation defects if used in commercial installations

Specifications



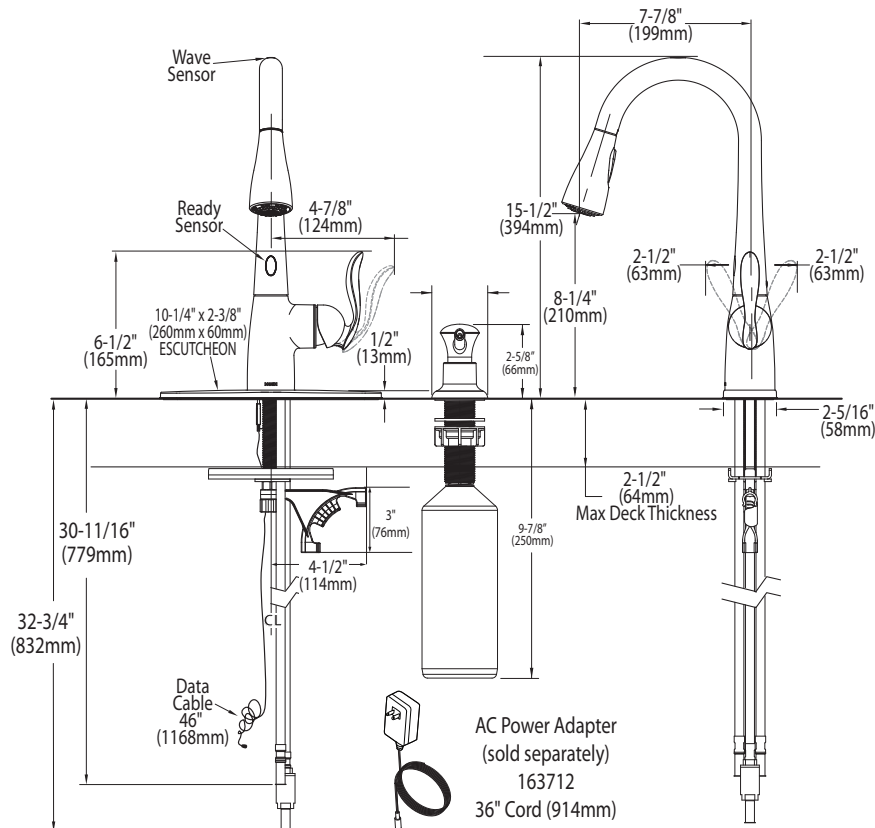
MotionSense™ Single Handle High Arc Pulldown Kitchen Faucet

Models: 87350E SERIES

NOTE: THIS FAUCET IS DESIGNED TO BE INSTALLED
THRU 1 OR 3 HOLES, 1-1/2" (38mm) MIN. DIA.



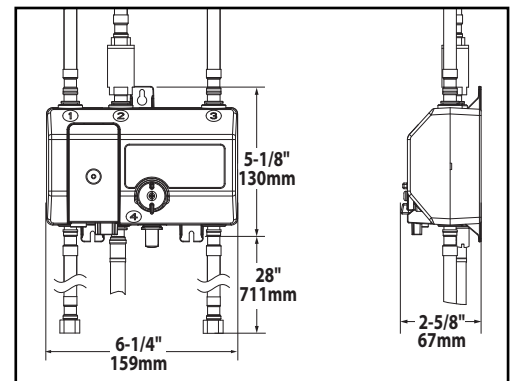
*motion*sense™



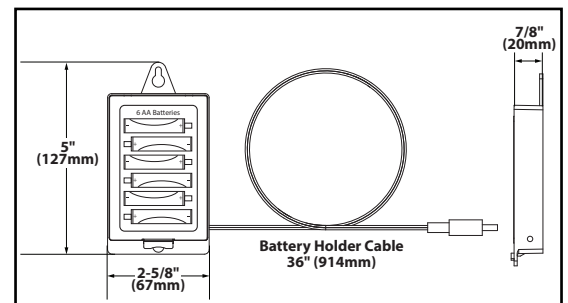
CRITICAL DIMENSIONS

(DO NOT SCALE)

Close up view of Control Box



Battery Holder





Buy it for looks. Buy it for life.®

FAUCET DESCRIPTION

- Versatile, hands-free convenience in the kitchen
- Allows users to control the faucet in 3 unique ways: Wave Sensor, Ready Sensor and familiar handle
- Powered by 6 AA batteries or optional AC power adapter
- Reflex™ pulldown system offers smooth operation, easy movement and secure docking
- Metal construction with various finishes identified by suffix
- Hydrolock® quick connect installation
- Pulldown spray with 68" braided hose
- Valve flexible supply lines with 3/8" compression fittings
- Spout uses push-fit hose connections
- High arc spout provides height and reach to fill or clean large pots while pull down wand provides the maneuverability for cleaning or rinsing
- Includes liquid soap dispenser

OPERATION

- Lever style handle
- Temperature controlled by 100° arc of handle travel
- Operates with less than 5 lbs. of force
- Operates in stream or spray mode in the pulldown or retracted position
- Spout rotates 100 degrees
- When filling a vessel outside the sink, the pause feature conveniently stops the flow of water as the wand passes over the counter top

FLOW

- Flow is limited to 1.5 gpm (7.6 L/min) at 60 psi

CARTRIDGE

- 1255™ Duralast™ cartridge for Single-Handle Faucets

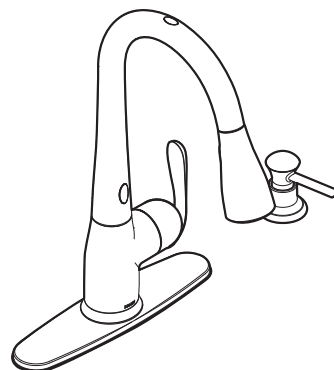
STANDARDS

- Third party certified to ASME A112.18.1/CSA B125.1 and all applicable requirements referenced therein including NSF 61/9
- Meets Georgia SB370 requirements
- Complies with California Proposition 65 and with the Federal Safe Drinking Water Act
- The backflow protection system in the device consists of two independently operating check valves, a primary and a secondary which prevent backflow
- ADA for lever handle

WARRANTY

- Limited lifetime warranty against leaks, drips, finish defects to the original consumer purchaser
- 5 year warranty electronic operation defects to the original consumer purchaser
- 5 year warranty against leaks, drips, finish defects if used in commercial installations
- 1 year warranty against electronic operation defects if used in commercial installations

Specifications



MotionSense™ Single Handle High Arc Pulldown Kitchen Faucet

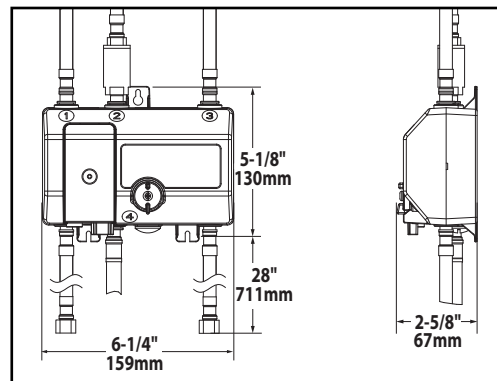
Models: 87350E SERIES

NOTE: THIS FAUCET IS DESIGNED TO BE INSTALLED
THRU 1 OR 3 HOLES, 1-1/2" (38mm) MIN. DIA.

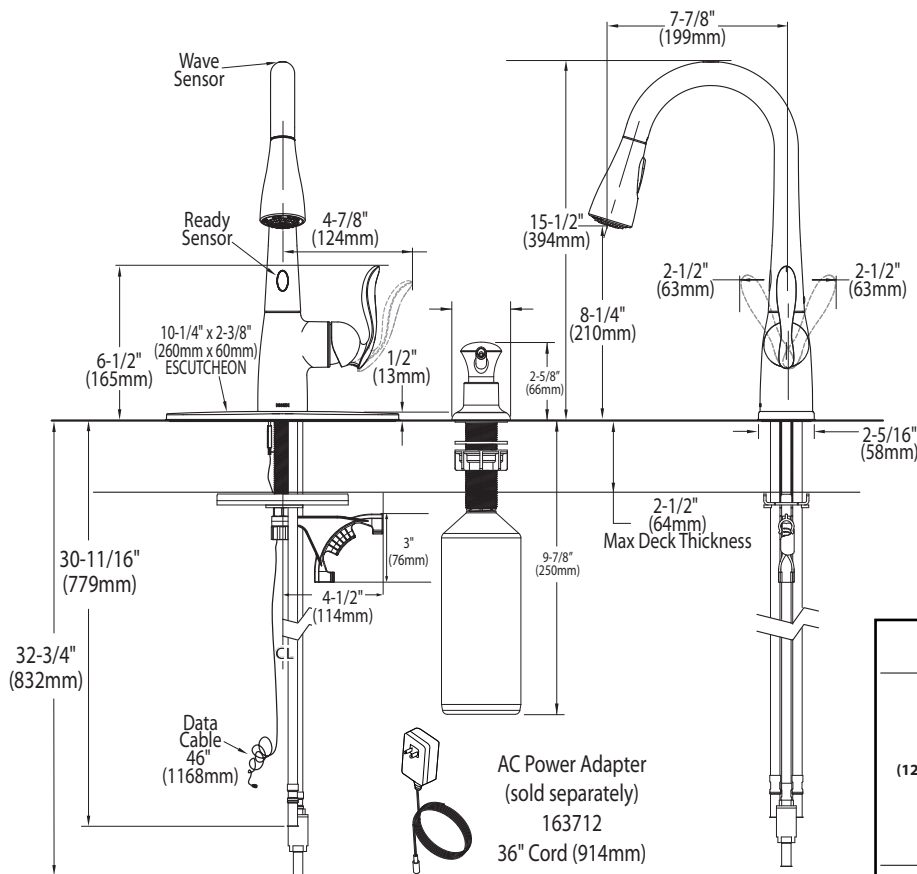
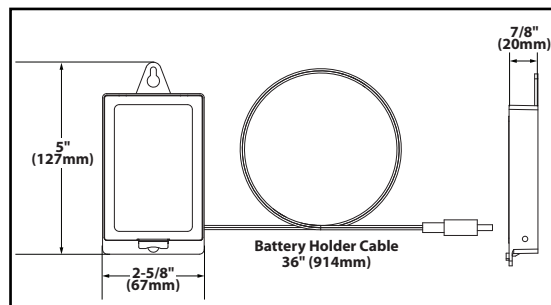


*motion*sense™

Close up view of Control Box



Battery Holder



CRITICAL DIMENSIONS

(DO NOT SCALE)